

HAZARDOUS WASTE CONTINGENCY PLAN

Quick Reference Guide



UNIVERSITY OF WISCONSIN-STEVENS POINT

This guide supplements the Hazardous Waste Contingency Plan and provides additional detail and background for campus hazardous waste spill response.

Revised by:

Environmental Health and Safety Officer
University Chemical Hygiene Officer
University of Wisconsin-Stevens Point
Stevens Point, WI 54481

This contingency plan quick reference guide is submitted in compliance with Chapters NR 664.0051-664.0056, NR 662, NR 665, NR 706 of the Wisconsin Administrative Code, Parts 262, 265, 302 of Title 40 of the Federal Code of Federal Regulations, Section 1910.120(q)(1) and Section 1910.38(a) of Title 29 of the Federal Code of Federal Regulations (OSHA regulations). It contains the following sections:

Table of Contents

EMERGENCY COORDINATORS AND CONTACTS	3
CAMPUS MAP.....	4
HAZARDOUS WASTE LOCATION STREET ADDRESSES	5
EMERGENCY RESPONSE ACCESS AND NOTIFICATION	6
EMERGENCY SERVICE PROVIDERS.....	7
OTHER RESOURCES.....	7
WASTE ACCUMULATION AREAS.....	8
BUILDING FLOOR MAPS	10
CHEMISTRY BIOLOGY	10
TRAINER NATURAL RESOURCES	14
SCIENCE BUILDING.....	18
NOEL FINE ARTS.....	19
MAINTENANCE AND MATERIEL	20

EMERGENCY COORDINATORS AND CONTACTS

The 24 hour per day emergency coordinators:

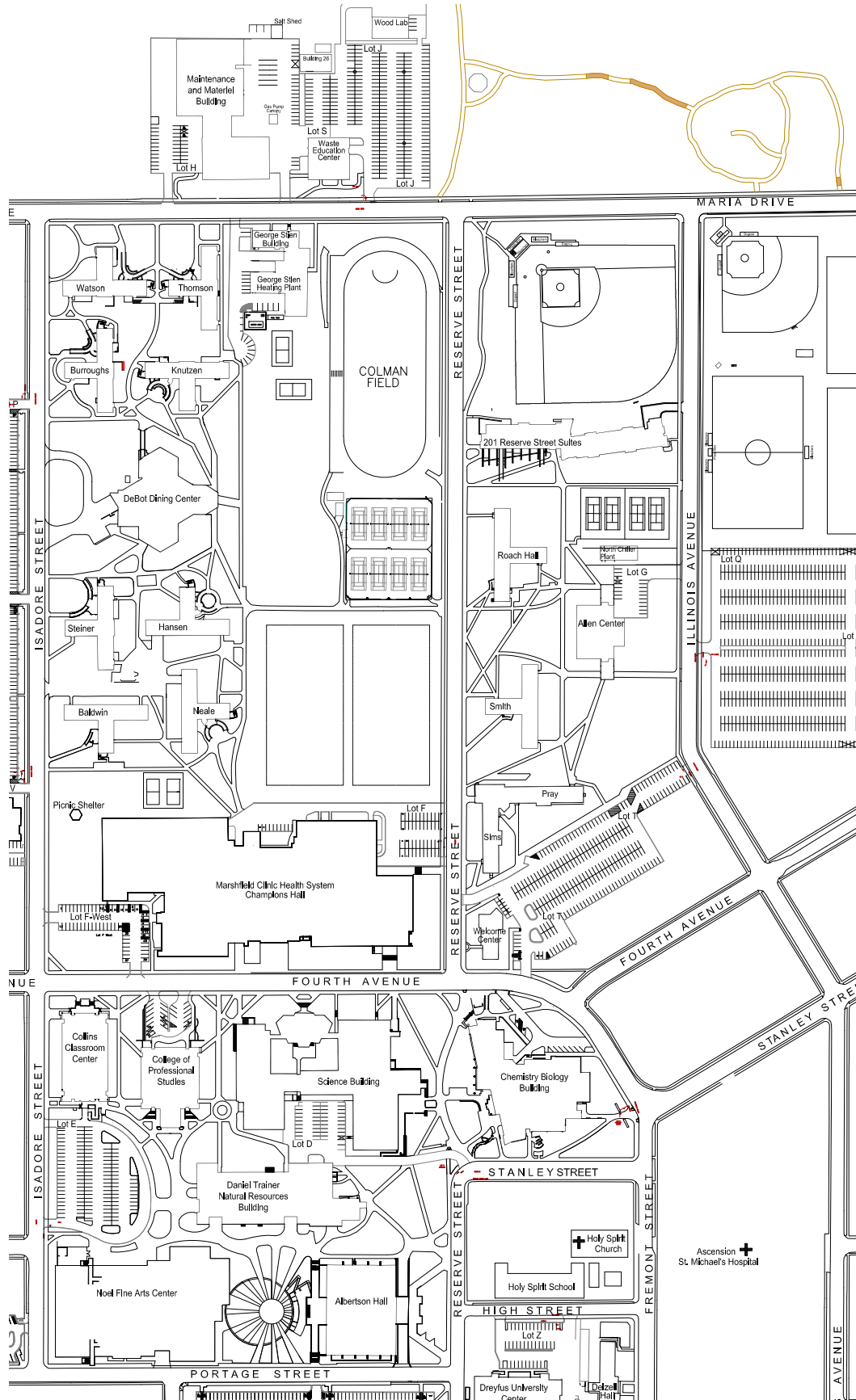
Jamie Brzezinski, (Primary Contact)
Environmental Health and Safety Specialist
133 Old Main Building
UW-Stevens Point
Stevens Point, Wisconsin 54481
Office phone: (715) 346-2320
24-Hour Contact Number: (715) 254-5665
Email: jabrzezi@uwsp.edu

Kevin Czerwinski, (Alternate Contact)
University Chemical Hygiene Officer/Biological Safety Officer
408 Chemistry Biology Building
UW-Stevens Point
Stevens Point, Wisconsin 54481
Office Phone: (715) 346-4154
24-Hour Contact Number: (715) 340-2216
Email: kczerwin@uwsp.edu

Other useful contacts include:

Emergency Operations Center:		
Tony Babl, University Police Chief	003 George Stien Bldg.	(715) 346-3456
Corinna Neeb, Emergency Management Specialist	125 George Stien Bldg.	(715) 346-4464
Facility Services:		
Paul Hasler, Director	120B M&M Bldg.	(715) 346-4275
Chemistry Biology Building:		
Keith Turnquist, Building Manager	125B	(715) 346-3252
Brent Speetzen, Stockroom Mgr.	223C	(715) 346-3759
Trainer Natural Resources Building:		
John Oestreich, Building Manager	196	(715) 346-4238
Pending, Stockroom Mgr.		(715) 346-XXXX
Noel Fine Arts Center:		
Stuart Morris, Asst. Dean	259	(715) 346-4776
Justin Playl, Studio Technician	191	(715) 346-3339
601 Div. St. Bldg-Residential Living:		
Tom Garton, Housing Superintendent	601 Div. St. Bldg	(715) 346-4101

CAMPUS MAP



HAZARDOUS WASTE LOCATION STREET ADDRESSES

The University of Wisconsin-Stevens Point (UWSP) is a four-year university with 13 major academic and administrative buildings, 14 residence halls and 3 residence centers. The campus has significant science and natural resources programs that generate most of the hazardous waste. UWSP is a large quantity hazardous waste generator by U.S. EPA definition. Approximately 10,000 pounds of hazardous waste is generated annually consisting primarily of lab chemicals and solvents. The Environmental Health and Safety Department presently maintains a subscription to ChemWatch which catalogs all safety data sheets (SDS) for products used on campus facilities.

Street addresses of buildings housing hazardous waste:

Chemistry Biology Building (Chemistry labs,* Biology labs,* stockroom,* and 125F**):
2101 4th Avenue, Stevens Point, WI 54481

Science Building (science labs,*):
740 Reserve Street, Stevens Point, WI 54481

Trainer Natural Resources Building (Biology labs,* Natural Resources labs,*and stockroom 134,**):
1900 Franklin Street, Stevens Point, WI 54481

Maintenance and Materiel (Paint Shop,* maintenance, and 174**):
1848 Maria Drive, Stevens Point, WI 54481

University Stores Rm 120, (petroleum products, chemical and compressed gas storage):
1848 Maria Drive, Stevens Point, WI 54481

601 Division St. Bldg. Residential Living Department. (Paint Shop and maintenance)
601 Division St. Stevens Point, WI. 54481

Noel Fine Arts Center (Art & Design,* Theater & Dance)
1801 Franklin St., Stevens Point, WI. 54481

See the map in Appendix A for further information.

*Satellite hazardous waste accumulation area

**Central hazardous waste accumulation area

EMERGENCY RESPONSE ACCESS AND NOTIFICATION

The locations of the satellite hazardous waste accumulation areas and the central hazardous waste accumulation areas are identified on maps at the end of this document.

Emergency equipment at each waste accumulation and storage area is available for those trained in its use. Staff who will be engaged in response to hazardous material releases or who frequently work with hazardous materials training are encouraged to receive training proportionate to the level of response in which they expect to be engaged.

Each University building is equipped with a wet standpipe and/or attached hose as well as numerous fire extinguishers. Each facility is equipped with a **local fire alarm system** that can be activated from and is audible in each working area.

Fire hydrants are located at every street corner and provide a flow rate of greater than 1500 gallons per minute. Fire hydrants are painted yellow for high visibility.

Telephones are located within easy access to the accumulation sites. University Police officers are equipped with a two-way radio that keeps them in contact with University Police and the Portage County Communication Center to alert proper authorities promptly of any mishaps.

Fire hydrants are located at every street corner and provide a flow rate of greater than 1500 gallons per minute. Fire hydrants are painted yellow for high visibility.

The Stevens Point Fire Department, located one block (west) from central campus, has fire trucks that would be available to combat a fire or assist in the event of any other emergency at university facilities. The Fire Department maintains five ambulances. St. Michael's Hospital is located one block (east) from central campus.

Portage County has a Type IV hazardous materials response team certified at the Operations level operating out of the Plover Fire Department. When additional resources are needed, the Plover Hazardous Materials Response Team requests assistance from the Waupaca County HazMat Team (Type III). All members of the Waupaca County HazMat Team must be specially trained to operate at hazmat incidents and are certified at the hazardous material Technician (or Operations) level. At a hazardous materials incident, team members operate as a Branch of the local fire department under a unified incident command structure. The Wausau Fire Department maintains a Type II Hazardous Materials Response Team.

EMERGENCY SERVICE PROVIDERS

The following agencies have received copies of this plan and will respond to campus emergencies.

- Stevens Point Fire Department (telephone 911): The Stevens Point Fire Department (SPFD) has received a copy of this contingency plan. The Stevens Point Fire Department will inspect university facilities throughout the year and will review fire protection equipment and hazards. SPFD provides confined space rescue service to the campus.
- Stevens Point Police Department (telephone 911)
- Portage County Emergency Management /LEPC (telephone (715) 346-1397 or (715) 346-1400)
- Plover Fire Department & Portage County HazMat Team (telephone (715) 345-5310)
- Plover Police Department
- Waupaca County HazMat Team
- Portage County Sheriff's Office
- St. Michael's Hospital

OTHER RESOURCES

Other resource agencies include:

- Department of Natural Resources, Wausau Regional Office, Maggie Tischauser, (715) 347-4942.
- Veolia Environmental Services is the state hazardous waste contractor. Contact information is available via the UW-System Web site "Contracts fo Spill Resposnse & Waste Disposal."
- St. Michael's Hospital Emergency Room, (715) 346-5100, 900 Illinois Avenue: The emergency room should be notified anytime a patient with a chemical injury is being transported. A copy of the safety data sheet (SDS) for the respective chemical or other relevant chemical safety information should be delivered with the patient. See - Campus Map Showing Hospital and Significant Generator Locations.
- UWSA Office of Risk Management,
Marisa Trapp, Senior Environment & Health Specialist, (608) 262-5656.
Amy Spohn, Occupational Safety Manager, (608) 262-4792.

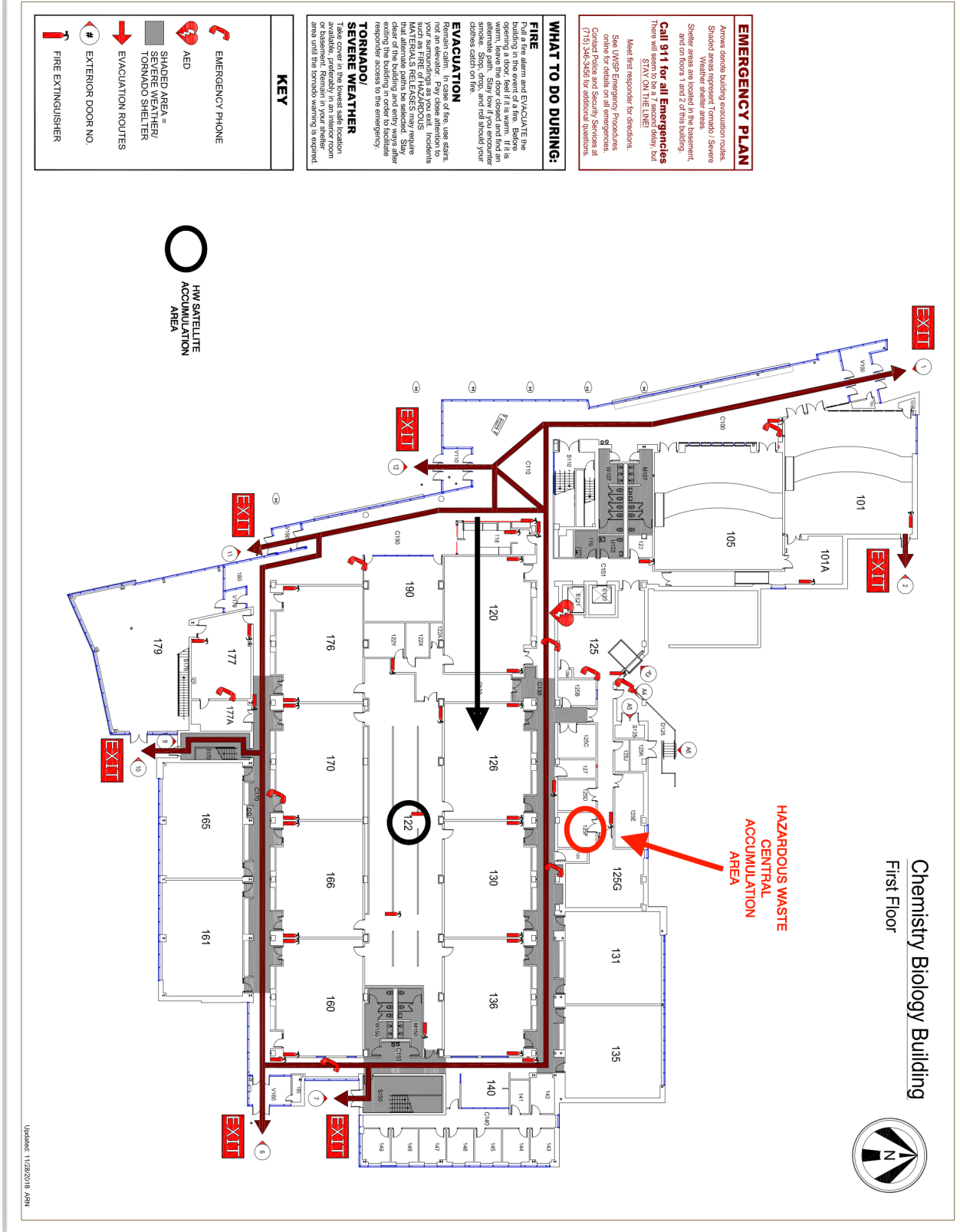
WASTE ACCUMULATION AREAS

Building	Room Number	Waste Type/ Hazards	Maximum Quantity
Chemistry Biology	125F	CENTRAL ACCUMULATION /ALL HAZARDS PRESENT	
	122	Spent ignitable solvent	2 gal
	220	Spent ignitable solvent	10 gal
	225	Spent ignitable solvent/ corrosive acid	10 gal
	226	Spent ignitable solvent	10 gal
	230	Spent ignitable solvent	10 gal
	236	Spent ignitable solvent	10 gal
	325	Toxic powdered solids	1 gal
	326	Spent ignitable solvent/toxic liquid (metal ions)	10 gal
	329	Spent ignitable solvent	5 gal
	330	Cancer causing liquid	1 pint
	336	Cancer causing liquid	1 pint
	366	Spent ignitable solvent/ corrosive acid	5 gal
	370	Spent ignitable solvent	5 gal
	418	Spent ignitable solvent	5 gal
	420	Spent ignitable solvent/ corrosive acid/harmful dust	20 gal
	423	Spent ignitable solvent	20 gal
	426	Spent ignitable solvent/ corrosive acid/harmful dust	20 gal
	429	Spent ignitable solvent/ corrosive acid/harmful dust	20 gal
	430	Spent ignitable solvent/ corrosive acid/harmful dust	20 gal
	436	Spent ignitable solvent/ corrosive acid/harmful dust	40 gal
	460	Spent ignitable solvent/toxic liquid (metal ions)	40 gal
	466	Spent ignitable solvent/toxic liquid (metal ions)	10 gal
	470	Spent ignitable solvent/toxic liquid (metal ions)	10 gal
	476	Toxic liquid (metal ions)	10 gal
Trainer Natural Resources	134	CENTRAL ACCUMULATION /ALL HAZARDS PRESENT	
	200	Spent ignitable solvent/ corrosive acid	20 gal
	261	Spent ignitable solvent/ corrosive acid	10 gal
	280	Spent ignitable solvent	20 gal
	333	Spent ignitable solvent	20 gal
	412	Spent ignitable solvent	10 gal
	458		
Science Bldg	D316	Spent ignitable solvent/ corrosive acid	5 gal

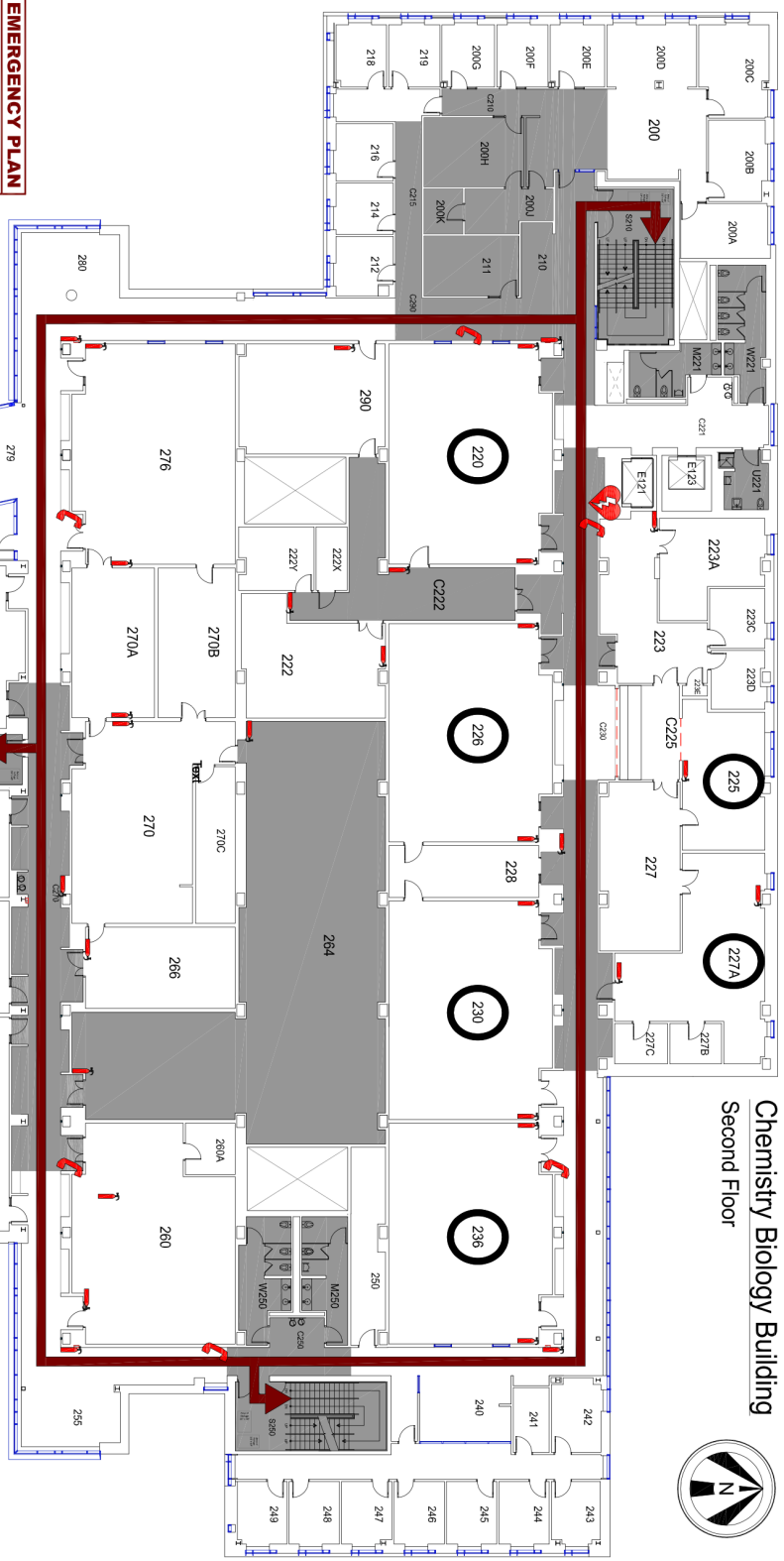
Noel Fine Arts	156C	Toxic liquids	5 gal
	183C	Spent ignitable solvent	5 gal
	185	Spent ignitable solvent	5 gal
Maintenance and Materiel	174	CENTRAL ACCUMULATION /ALL HAZARDS PRESENT	

BUILDING FLOOR MAPS

CHEMISTRY BIOLOGY



Chemistry Biology Building Second Floor



EMERGENCY PLAN

Arrows denote building evacuation routes. Shaded areas are located in the basement, and on floors 1 and 2 of this building. These are known to have 7 minutes of shelter. STAY ON THE LINE! Meet first responder for directions. See UHSO Emergency Procedures online for details on all emergencies. Contact Police and Security Services at (715) 346-3456 for additional questions.

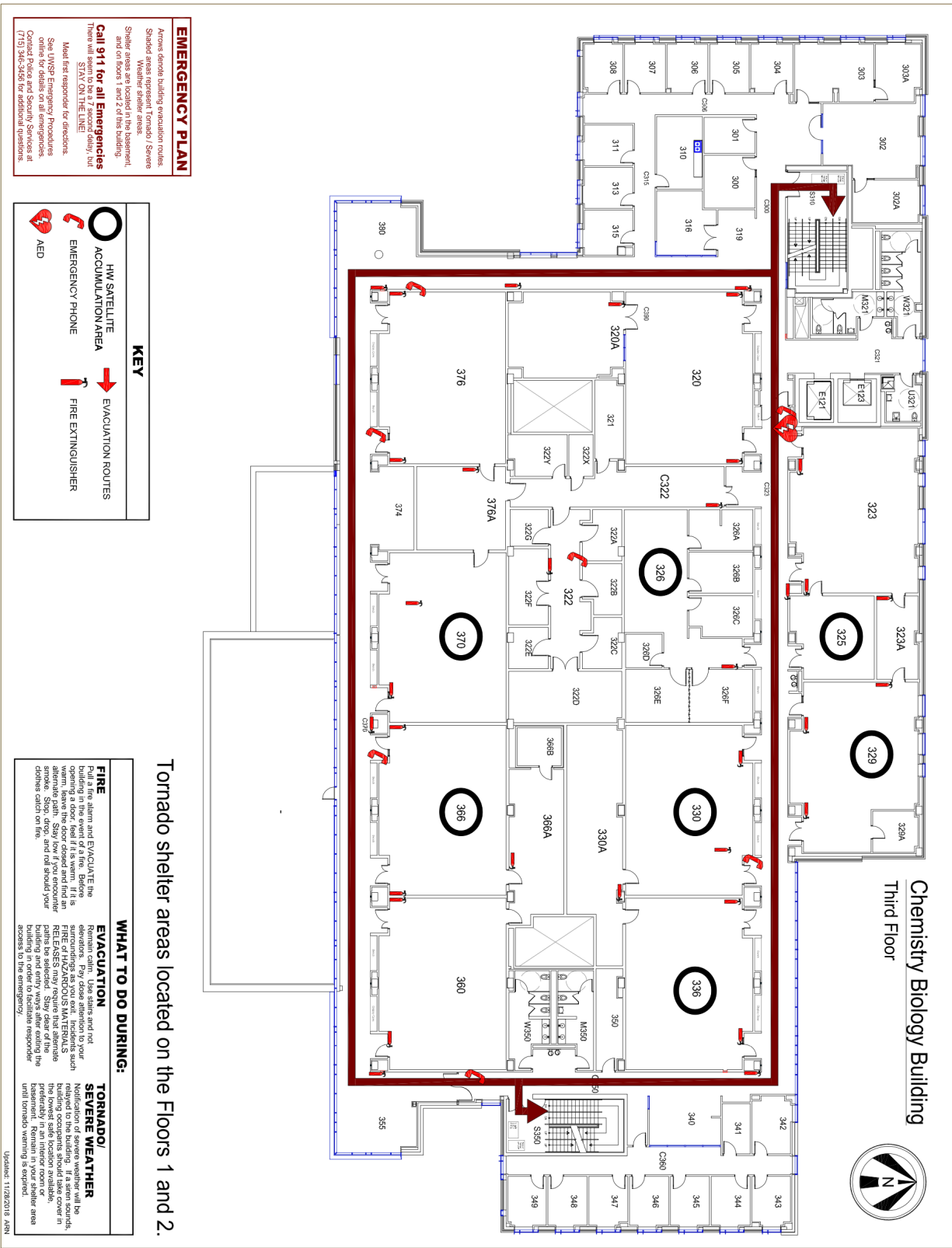
KEY

- HM SATELLITE ACCUMULATION AREA
- EMERGENCY PHONE
- AED
- SHADED AREA = SEVERE WEATHER/ TORNADO SHELTER
- EVACUATION ROUTES
- FIRE EXTINGUISHER

FIRE
Pull a fire alarm and EVACUATE the building. Do not use elevators. If you are in a room, close the door and find an exit. If you are in a hallway, find an exit. If you are in a stairwell, find an exit. If you are in a room, close the door and find an exit. If you are in a hallway, find an exit. If you are in a stairwell, find an exit.

EVACUATION
Remain calm. Use stairs and not elevators. Do not use elevators. If you are in a room, close the door and find an exit. If you are in a hallway, find an exit. If you are in a stairwell, find an exit.

TORNADO/ SEVERE WEATHER
Notification of severe weather will be provided by the UHSO. If you are in a room, close the door and find an exit. If you are in a hallway, find an exit. If you are in a stairwell, find an exit.



Chemistry Biology Building
Third Floor



Tornado shelter areas located on the Floors 1 and 2.

EMERGENCY PLAN

Arrows denote building evacuation routes.
Shaded areas represent Tornado / Severe Weather shelter areas.
Stairwells are shaded in light blue.
Shaded areas are located on floors 1 and 2 of this building.
There are two shelter areas on this floor.

Call 911 for all Emergencies
Stay on the line!
Meet first responder for directions.
See UNSG Emergency Procedures for more information.
Contact Police and Security Services at (715) 346-3456 for additional questions.

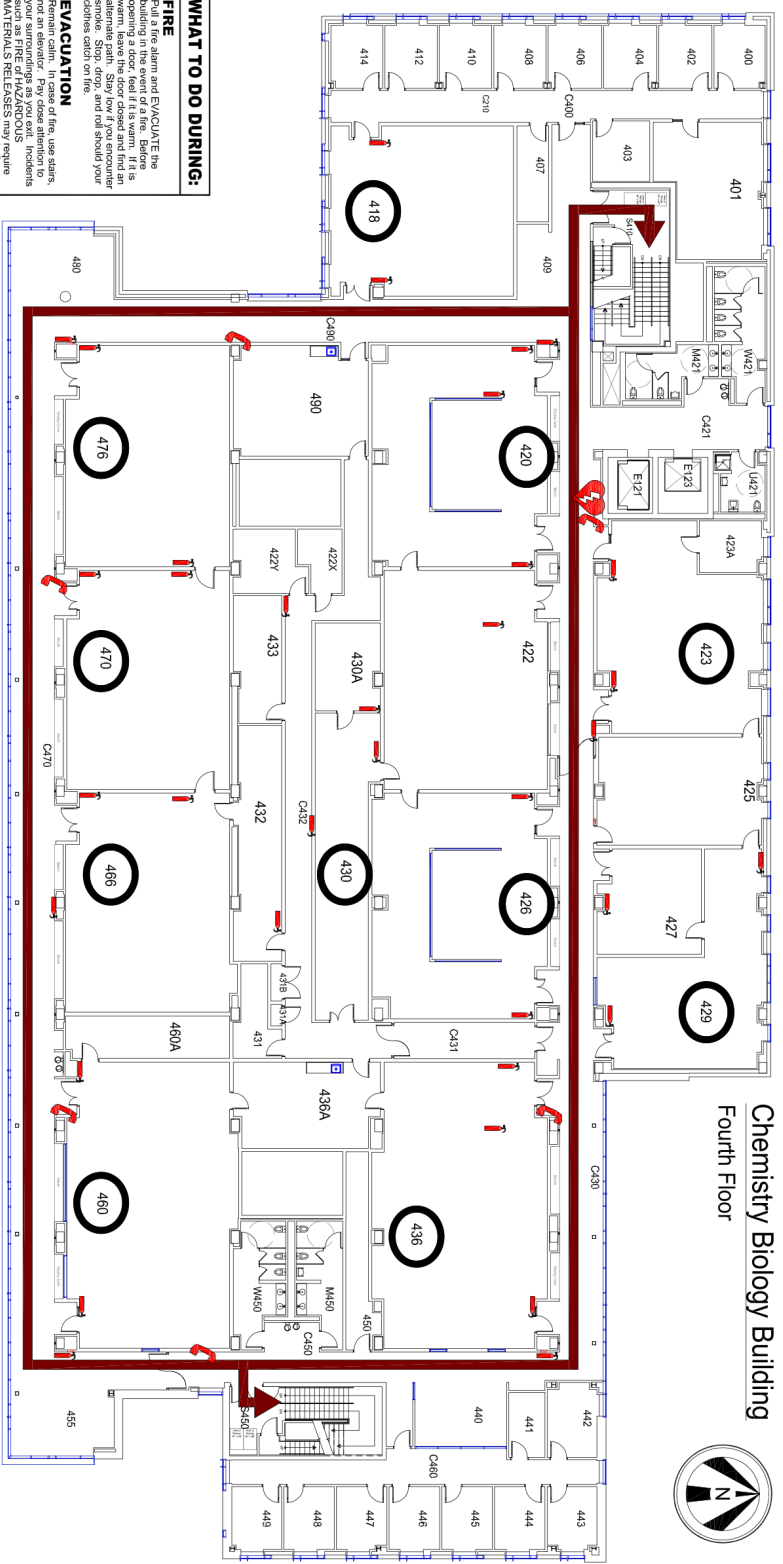
KEY

- HW SATELLITE ACCUMULATION AREA
- EVACUATION ROUTES
- EMERGENCY PHONE
- FIRE EXTINGUISHER
- AED

WHAT TO DO DURING:

FIRE If you see a fire alarm and EVACUATE the building in the event of a fire. Before opening a door, feel if it is warm. If it is warm, do not open the door. Stay in your room until the fire is extinguished. Stop covering your eyes and nose. Stop, drop, and roll should your clothes catch on fire.	EVACUATION If you see a fire alarm and EVACUATE the building in the event of a fire. Before opening a door, feel if it is warm. If it is warm, do not open the door. Stay in your room until the fire is extinguished. Stop covering your eyes and nose. Stop, drop, and roll should your clothes catch on fire.	TORNADO/ SEVERE WEATHER If you see a tornado warning or severe weather warning, take cover in the shelter areas. If a severe weather warning is issued, take cover in the shelter areas. Remain in your shelter area until tornado warning is expired.
--	--	--

Chemistry Biology Building Fourth Floor



WHAT TO DO DURING:

FIRE
 If you detect a fire, immediately evacuate the building in the event of a fire. Before opening a door, feel if it is warm. If it is warm, leave the door closed and find an alternate exit. If the door is cool, open the door slowly. Stop, drop, and roll should your clothes catch on fire.

EVACUATION
 Remain calm. In case of fire, use stairs, not an elevator. Pay close attention to the directions of the evacuation. If you are unable to evacuate, you should remain in your room. If you are unable to evacuate, you should remain in your room. If you are unable to evacuate, you should remain in your room.

HAZARDOUS MATERIALS RELEASES
 If you detect a hazardous materials release, you should evacuate the building immediately. If you are unable to evacuate, you should remain in your room. If you are unable to evacuate, you should remain in your room.

TORNADO/ SEVERE WEATHER
 Take cover in the lowest stable location in the building. If you are in a basement or below ground level, you should remain in your shelter area until the tornado warning is expired.

KEY

- EMERGENCY PHONE
- AED
- FIRE EXTINGUISHER
- EVACUATION ROUTES



Tornado shelter areas located on the Floors 1 and 2.

EMERGENCY PLAN

Arrows denote building evacuation routes. Shelter areas are located in the basement and on floors 1 and 2 of this building. **Call 911 for all Emergencies** (715) 346-3456. **STAY ON THE LINE!**

Updated: 11/28/2018 ANU

UWSP Emergency Plan

Apex Dome Building Evacuation Routes
 Shaded Areas Represent Tornado/Severe Weather Shelter Areas
 Shelter Areas Are Located in The Basement And On Floors 1 & 2 Of The Building

WHAT TO DO DURING:

**TORNADO/
SEVERE WEATHER**

When you hear the severe weather warning, immediately seek shelter. If you are in a classroom, go to the shelter areas. If you are in a hallway, go to the shelter areas. If you are in a common area, go to the shelter areas. Stay in the shelter areas until the warning is cancelled.

FIRE

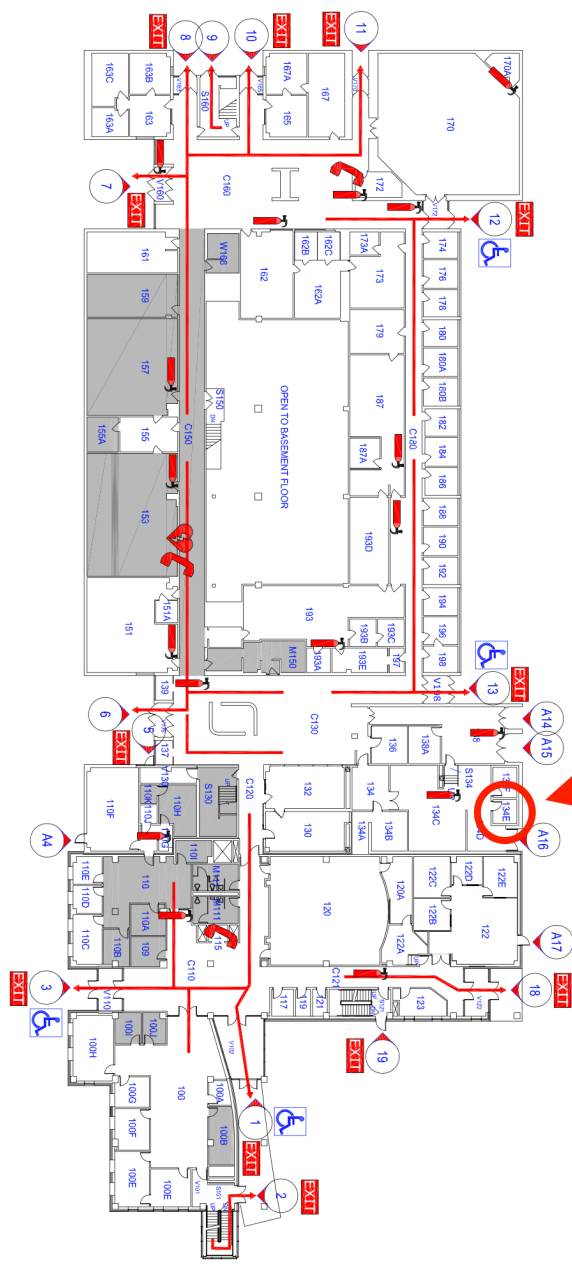
Put the alarm and EVACUATE the building in the event of a fire. Before opening a door, feel the door with your hand. If the door is hot, do not open it. Stay low and use the stairs. Do not use the elevator. Stay in the shelter areas until the fire is extinguished.

EVACUATION

Follow the evacuation routes. Do not use the elevator. Stay in the shelter areas until the evacuation is complete. Do not re-enter the building until the all-clear is given.

KEY

- YOU ARE HERE
- EMERGENCY PHONE
- AED (Located on 1st and 3rd floor)
- FIRE EXTINGUISHER
- SEVERE WEATHER/
TORNADO SHELTER
- EVACUATION ROUTES
- EXTERIOR DOOR NUMBER



**CENTRAL ACCUMULATION
AREA**

Call 911 for all Emergencies.
 Do not attempt to handle a second emergency, but STAY ON THE LINE!
 Meet first responder for directions.
 See UWSP Emergency Procedures online for details on all emergencies.
 Contact Protective Services at (715)246-3456 with additional questions.

UNIVERSITY OF WISCONSIN-STEVENS POINT
 WSP Facilities Planning

Drawn: Angie Novak
 Date: 01/22/2019
Trainer Natural Resources Building
 First Floor Emergency Plan

Bldg No: 0012

UWSP Emergency Plan

Arrow Dome Building Evacuation Routes, Shelter Areas Represent: (Hazardous Waste Quick Reference Guide, Shelter Areas Are Located in the Basement Area On Floor 1 & 2 of The Building)

WHAT TO DO DURING:

TORNADO/ SEVERE WEATHER

Notification of severe weather will be relayed through the building's intercom system. Occupants should take cover in the lowest safe or basement. Remain in your shelter area until tornado warning is expired.






FIRE

Find a fire alarm and EVACUATE the building in the event of a fire. If you see a fire, pull the fire alarm. If it is warm, leave the door closed. If you encounter smoke, Stop, Drop, and Roll should your clothes catch fire.

EVACUATION

Remain calm. Use stairs and not elevators. Do not use elevators. If you are in a room, you exit. Find exits such as fire of exits. Only use exits that are clearly marked. Stay clear of the building and entry ways. Do not use the building's fire alarm system. Facilitate responder access to the emergency.

KEY

-  EMERGENCY PHONE
-  AED (Located on 1st and 3rd Floor)
-  FIRE EXTINGUISHER
-  SEVERE WEATHER/ TORNADO SHELTER
-  EVACUATION ROUTES




Call 911 for all Emergencies.
 There will seem to be a 7 second delay, but STAY ON THE LINE!
 Meet first responder for directions.
 See UWSP Emergency Procedures online for details on all emergencies.
 Contact Protective Services at (715)346-3466 with additional questions.



UNIVERSITY OF WISCONSIN-STEVENS POINT
 Drawn: Angie Novak
 Date: 01/22/2019
 UWSP Facilities Planning

Trainer Natural Resources Building Second Floor Emergency Plan

Bldg No: 0012



UWSP Emergency Plan

Across Domus Building Evacuation Routes, Stairwell Areas Represent Tornado/Severe Weather Shelter Areas, Shelter Areas Are Located In The Basement And On Floors 1 & 2 Of The Building.

WHAT TO DO DURING:

TORNADO/ SEVERE WEATHER

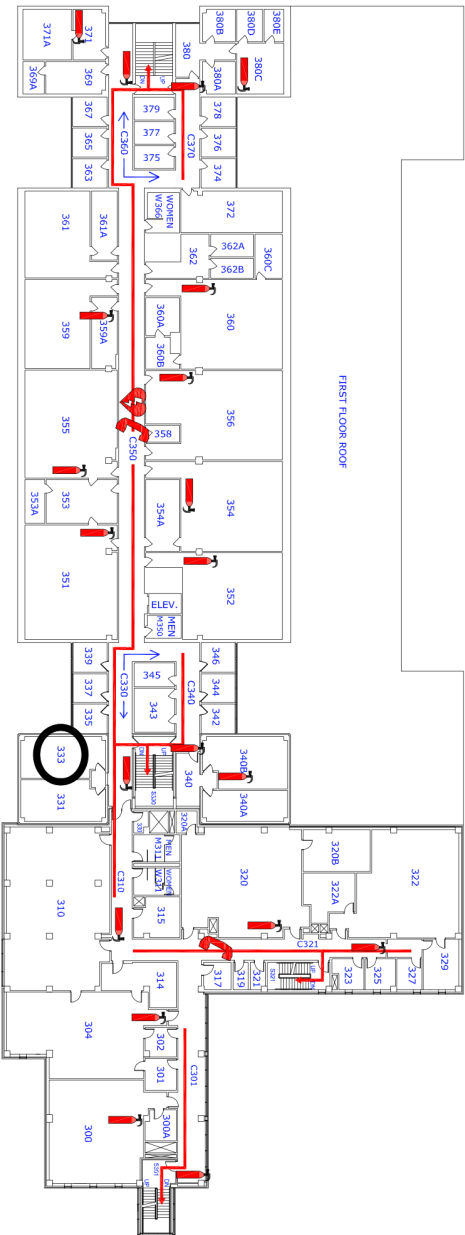
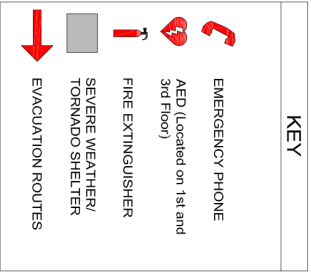
Indication of severe weather will be relayed to the building. If a storm surges, building evacuation routes will be used. Shelter locations available preferably in an interior room with no windows or doors. If your shelter location is unavailable, seek shelter in a smaller area until the storm warning is received.

FIRE

Put a fire alarm and EVACUATE the building in the event of a fire. Before opening a door, check for heat and smoke. If the door is closed and hot, find an alternate path. Stay low if you are in a hallway. Do not use elevators. Follow your designated route to the exit, and roll under your defense until you are clear.

EVACUATION

Evacuation routes are shown on this plan and elevators. Pay close attention to your surroundings as you evacuate. Do not use elevators. HAZARDOUS MATERIALS RELEASES may require that alternate paths be selected. Evacuation routes are shown on this plan after exiting the building in order to facilitate responder access to the emergency.



Call 911 for all Emergencies.
There will seem to be a 7 second delay, but **STAY ON THE LINE!**
Meet first responder for directions.
See UWSP Emergency Procedures online for details on all emergencies.
Contact Protective Services at (715)346-3466 with additional questions.



UNIVERSITY OF WISCONSIN-STEVENS POINT
 Drawn: Angie Novak
 Date: 01/22/2019
 UWSP Facilities Planning

Trainer Natural Resources Building Third Floor Emergency Plan

Bldg No: 0012

UWSP Emergency Plan

Arrow Detail Building Evacuation Routes
 Shelter Areas Located In The Basement And On Floors 1 & 2 Of This Building.

WHAT TO DO DURING:

TORNADO/ SEVERE WEATHER

When you hear the warning siren, immediately go to the shelter area. If a siren sounds, building occupants should immediately seek shelter. If you are in a shelter area, stay there until the siren stops. If you are in a shelter area, stay there until the siren stops.






FIRE

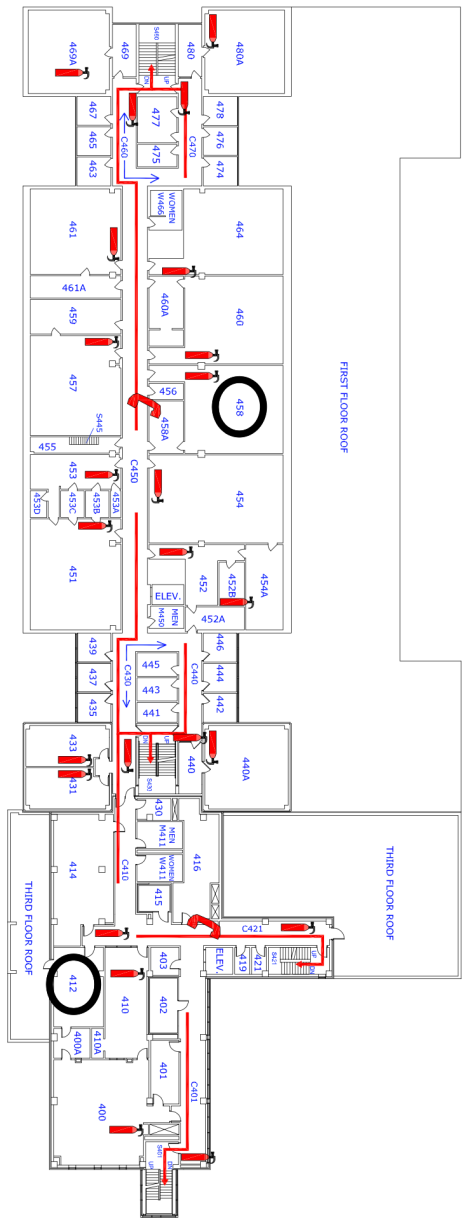
When you hear the fire alarm, immediately go to the shelter area. If a fire alarm sounds, building occupants should immediately seek shelter. If you are in a shelter area, stay there until the alarm stops. If you are in a shelter area, stay there until the alarm stops.

EVACUATION

When you hear the evacuation alarm, immediately go to the shelter area. If an evacuation alarm sounds, building occupants should immediately seek shelter. If you are in a shelter area, stay there until the alarm stops. If you are in a shelter area, stay there until the alarm stops.

KEY

-  EMERGENCY PHONE
-  AED (located on 1st and 3rd floor)
-  FIRE EXTINGUISHER
-  SEVERE WEATHER/TORNADO SHELTER
-  EVACUATION ROUTES



Call 911 for all Emergencies.
 There will seem to be a 7 second delay, but STAY ON THE LINE!
 Meet first responder for directions.
 See UWSP Emergency Procedures online for details on all emergencies.
 Contact Protective Services at (715)346-3456 with additional questions.



Drawn: Angie Novak
 Date: 01/22/2019
 UWSP Facilities Planning

Trainer Natural Resources Building Fourth Floor Emergency Plan

Bldg No: 0012



UWSP Emergency Plan

Arrow Denotes Building Evacuation Routes, Severe Weather Shelter Areas, Shelter Areas Located in the Basement And On Floors 1 & 2 of the Building.

WHAT TO DO DURING:

TORNADO/ SEVERE WEATHER

When you hear the sirens, you should take cover in the lowest level of the building. If a severe weather, building occupants should take cover in the lowest level of the building. If a severe weather, building occupants should take cover in the lowest level of the building. If a severe weather, building occupants should take cover in the lowest level of the building. If a severe weather, building occupants should take cover in the lowest level of the building.

FIRE

When you hear the alarm and EVACUATE the building in the event of a fire. Follow operating a door. If it is warm, leave the door closed. If it is cool, open the door and check for smoke. If you see smoke, stop, drop, and roll around your outside search the fire.

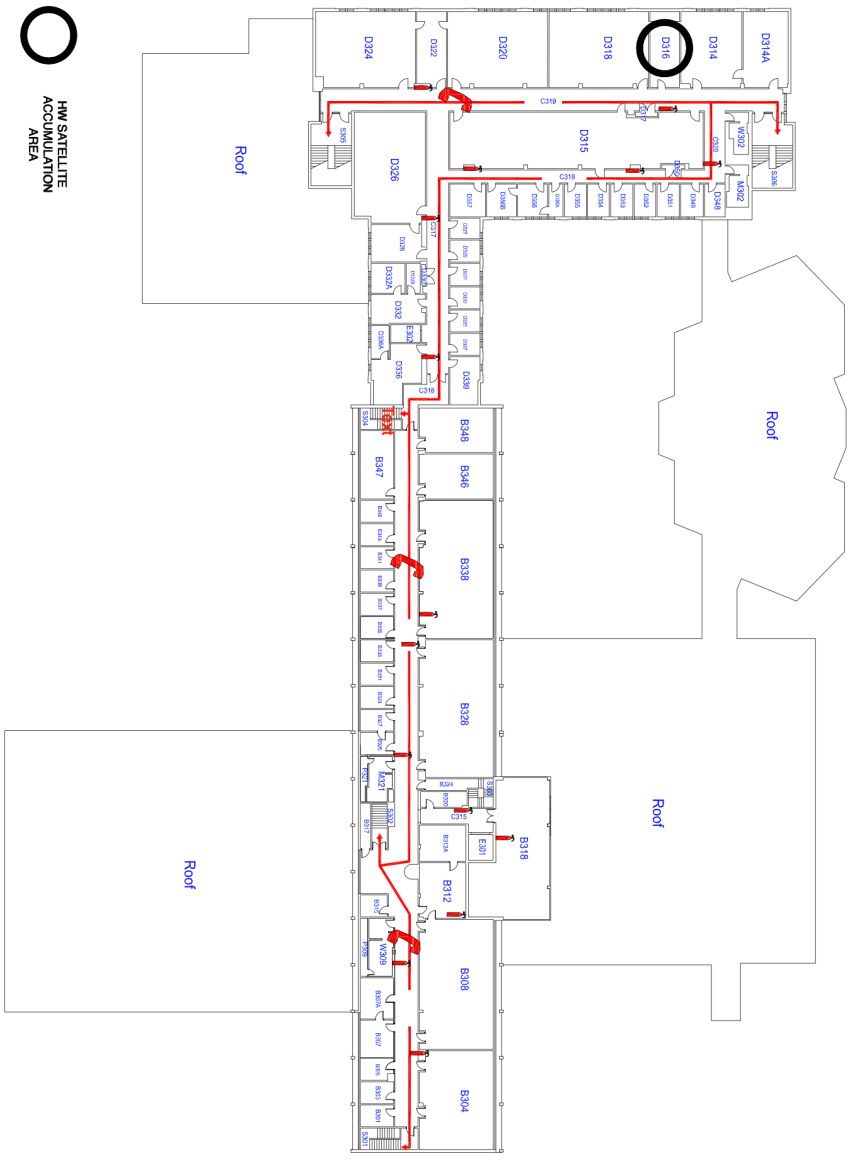
EVACUATION

Pay close attention to your surroundings as you leave. Evacuate as a FIRE of any kind. Evacuation routes are marked on the floor plan. Evacuation routes are marked on the floor plan. Evacuation routes are marked on the floor plan. Evacuation routes are marked on the floor plan. Evacuation routes are marked on the floor plan.

KEY

- EMERGENCY PHONE
- AED (Located on 1st floor)
- FIRE EXTINGUISHER
- SEVERE WEATHER/
TORNADO SHELTER
- EVACUATION ROUTES

Call 911 for all Emergencies.
There will seem to be a 10 second delay, but STAY ON THE LINE!
Meet first responder for directions.
See UWSP Emergency Procedures at <http://www.uwsp.edu/rmg> for details on all emergencies.
Contact Protective Services at (715)346-3456 with additional questions.



UNIVERSITY OF
WISCONSIN-STEVENS POINT

Drawn: Angie Novak
Date: 07/13/2018

UWSP Facilities Planning

Science Building
Third Floor Emergency Plan

Bldg No: 0006

SCIENCE BUILDING

UWSP Emergency Plan

Approved Building Evacuation Routes
 Shelter Areas Represent Tornado/Severe Weather Shelter Areas
 Shelter Areas are Located in The Basement And On Floors 1 & 2 Of The Building



WHAT TO DO DURING:

TORNADO/ SEVERE WEATHER
 Notification of severe weather will be relayed over the building's public address system. Evacuation routes will be announced. Evacuate to the shelter areas, preferably in an interior room. Remain calm. Use stairs and not elevators. HAZARDOUS MATERIALS RELEASES may occur. Remain calm. Use stairs and not elevators. Stay clear of the building and entry ways. Evacuate to the shelter areas. Evacuation routes will be announced.

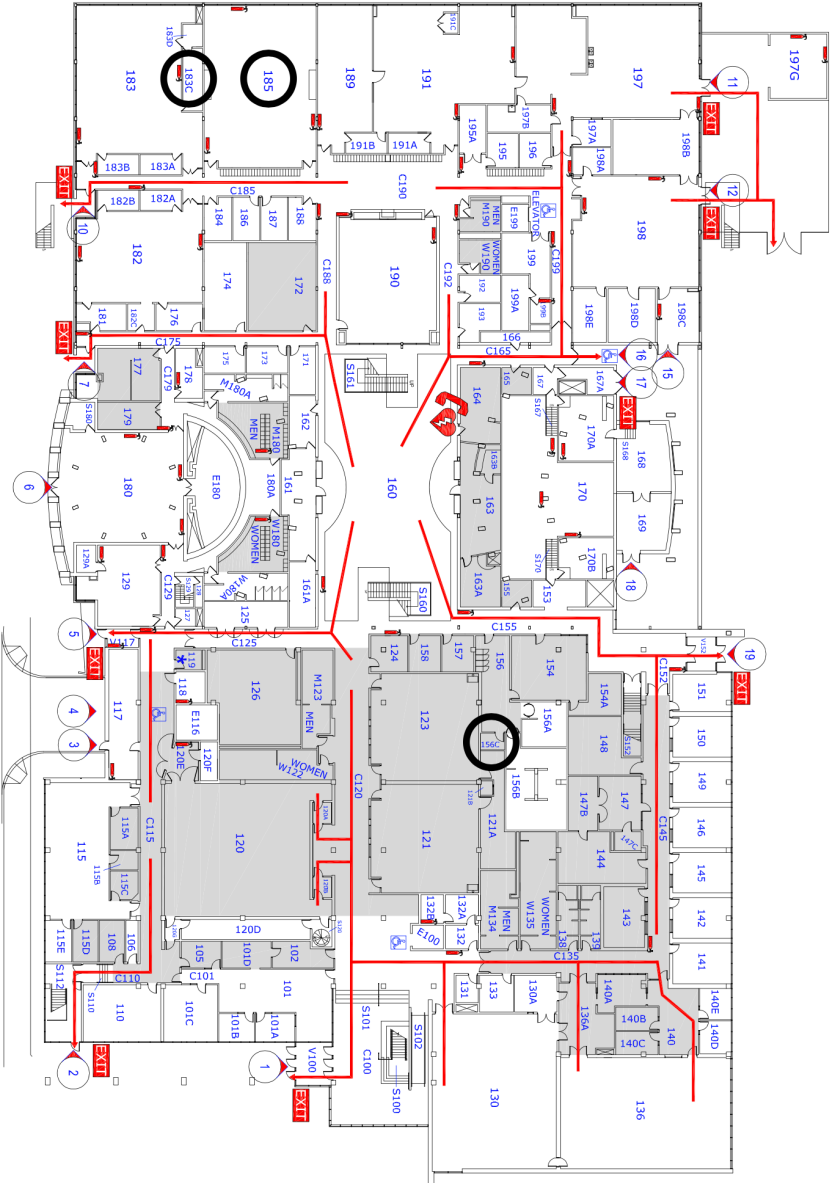
FIRE
 Fire alarm will sound. Evacuate the building in an orderly fashion. Do not use elevators. Evacuate to the shelter areas, preferably in an interior room. Remain calm. Use stairs and not elevators. Stay clear of the building and entry ways. Evacuation routes will be announced.

EVACUATION
 Remain calm. Use stairs and not elevators. Stay clear of the building and entry ways. Evacuation routes will be announced.

KEY

- EMERGENCY PHONE
- AED (located on first and second floors)
- FIRE EXTINGUISHER
- SEVERE WEATHER/ TORNADO SHELTER
- EVACUATION ROUTES
- EXTERIOR DOOR NUMBER

Call 911 for all Emergencies
 There will be a public address system in the building. Stay on the line. Meet first responder for directions. See UWSP Emergency Procedures online for details on all emergencies. Contact Protective Services at (715)346-3456 with additional questions.



Drawn: Angle Novak
 Date: 02/14/2019

Noel Fine Arts Center (NFAC)

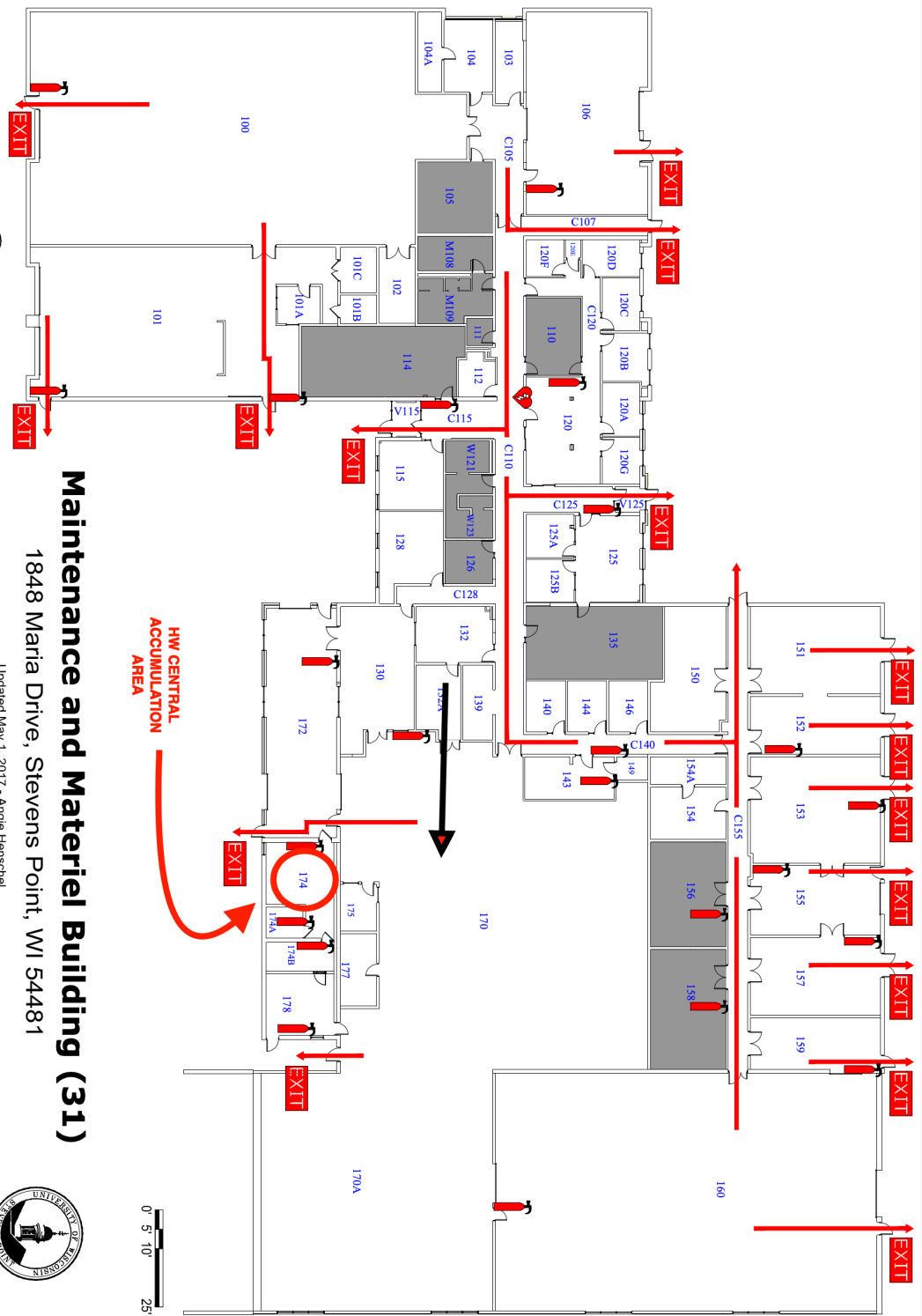
First Floor Emergency Plan

UWSP Facilities Planning

Bldg No: 0009

MAINTENANCE AND MATERIEL

UWSP
Emergency Plan
 Arrows Denote Building Evacuation Routes.
 Shaded Areas Represent Tornado/
 Severe Weather Shelter Areas.
 Shelter Areas Are Located On The Upper
 And Lower Levels Of This Building.



Maintenance and Materiel Building (31)

1848 Maria Drive, Stevens Point, WI 54481

Updated May 1, 2017 - Angie Henschel

KEY

- EVACUATION ROUTES
- SEVERE WEATHER/TORNADO SHELTER
- AED

WHAT TO DO DURING:

TORNADO/ SEVERE WEATHER
 In the event of a tornado or severe weather, you should take cover in the lowest safe shelter area available. Remain in your shelter area until you are notified to evacuate.

FIRE
 In the event of a fire, you should evacuate the building in the direction of the nearest exit. Do not use elevators. If you are in a room with a fire alarm pull station, pull the station. Do not return to the building until you are notified to do so.

EVACUATION
 In the event of an evacuation, you should follow the directions of the evacuation coordinator. Do not use elevators. Do not return to the building until you are notified to do so.

Call 911 for all Emergencies.
 There will seem to be a 10 second delay, but STAY ON THE LINE!

Meet first responder for directions.
 See UWSP Emergency Procedures at <http://www.uwsp.edu/emg> for details on all emergencies.
 Contact Protective Services at (715) 346-3458 for additional questions.

