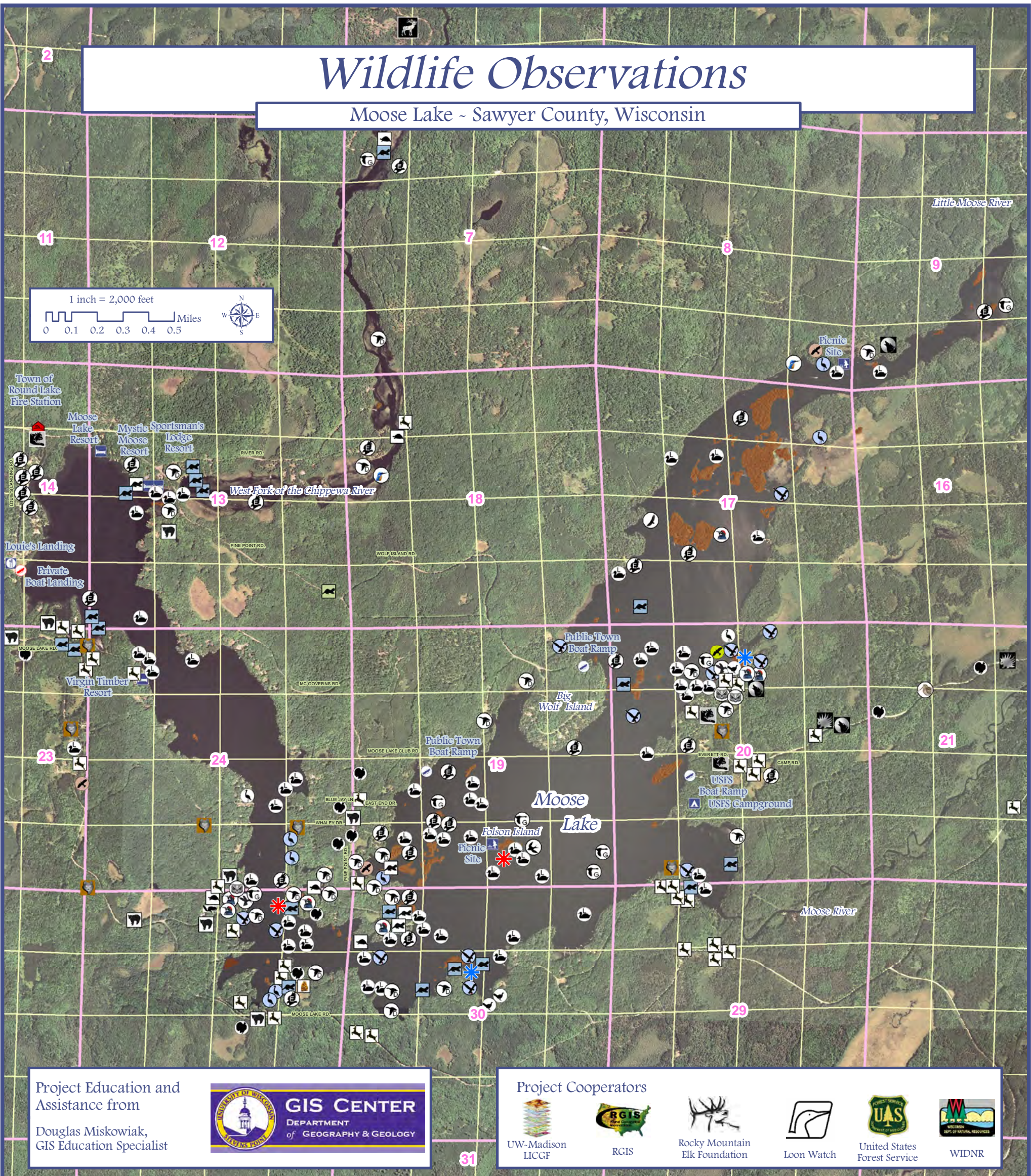


Wildlife Observations

Moose Lake - Sawyer County, Wisconsin



Project Education and Assistance from
Douglas Miskowiak,
GIS Education Specialist



Project Cooperators



WILDLIFE OBSERVATIONS

- | | | | |
|---------------|------------|----------------|-----------------------|
| ELK | DEER | OSPREY | WOODCOCK |
| WOLF | RACCOON | RAPTOR | WOODPECKER |
| FOX | PORCUPINE | BUZZARD | HUMMINGBIRD |
| BEAR | GROUND HOG | DUCK | SWALLOW |
| BOBCAT | CHIPMUNK | GOOSE | TURKEY |
| OTTER | OWL | LOON | GROUSE; RUFFED GROUSE |
| FISHER | EAGLE | HERON | TURTLE |
| MINK; MUSKRAT | HAWK | SANDHILL CRANE | Osprey Nest |
| | | KING FISHER | Loon Nest |

DATA SOURCES

Locations of wildlife observations from residents of Moose Lake in Sawyer County, Wisconsin, Summer 2008. Locations and attributes of wildlife observations denoted on hardcopy maps. Locations and attributes digitized by Dan McFarlane, Center for Land Use Education. Locations were modified by Douglas Miskowiak for cartographic display. Locations denoted by residents are preserved in a spatial geodatabase.

Map Crafted by Douglas Miskowiak -- Version 5/22/09



Moose Lake
Legacy Initiative

Sponsored by Couderay Waters Regional Land Trust, Inc.

Funding from the Wisconsin Department of Natural Resources
Lake Planning Grant Program

