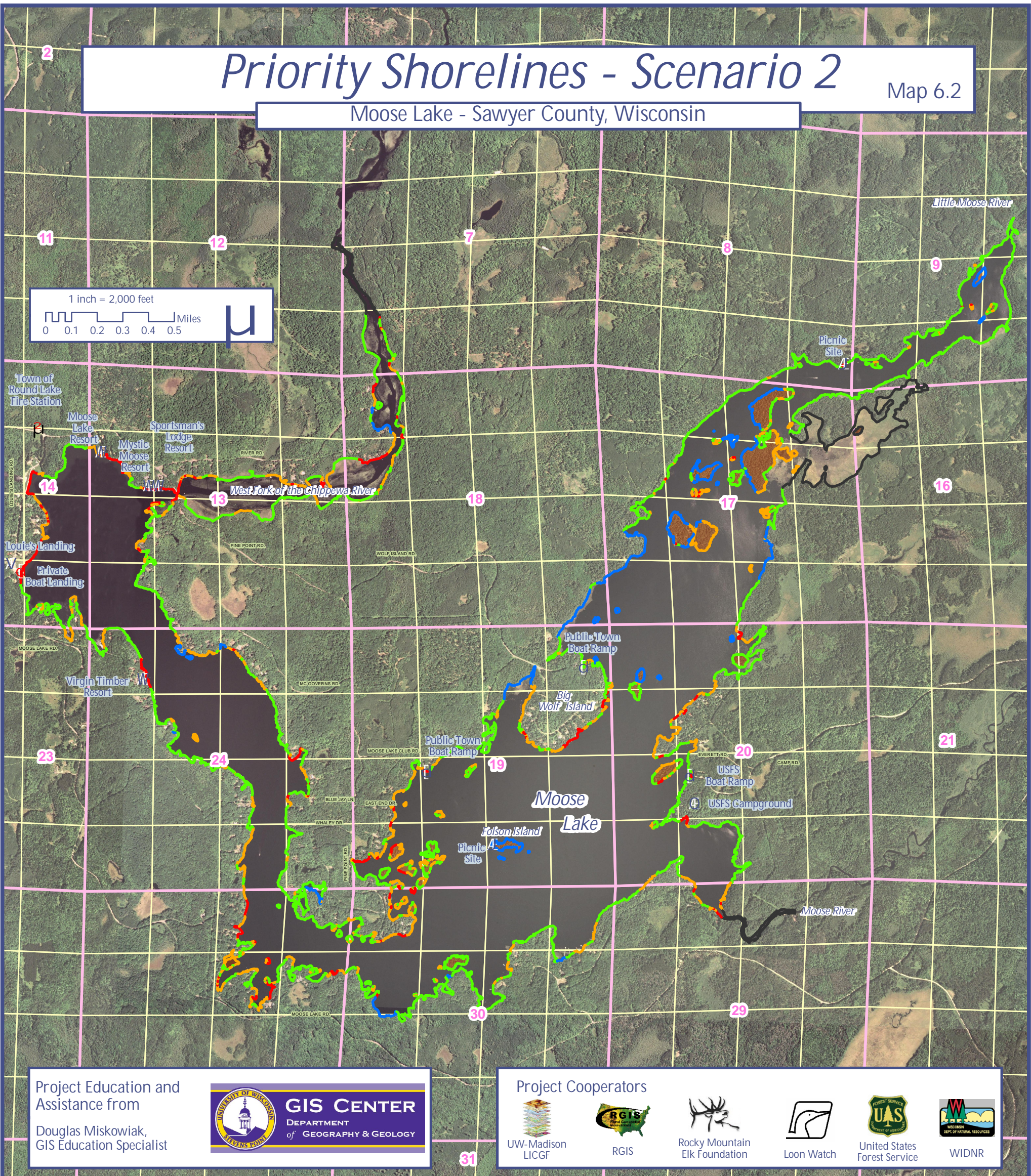


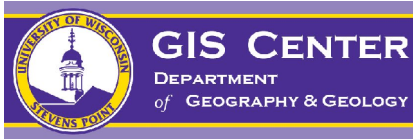
Priority Shorelines - Scenario 2

Map 6.2

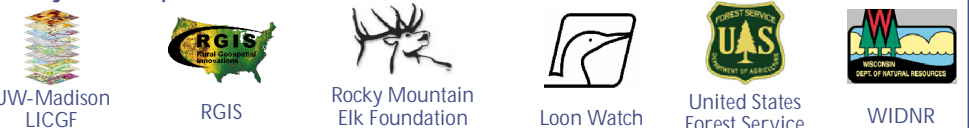
Moose Lake - Sawyer County, Wisconsin



Project Education and Assistance from
Douglas Miskowiak,
GIS Education Specialist



Project Cooperators



PRIORITY SHORELINES LEGEND & STATISTICS

Priority Shorelines	Mainland Statistics	Island Statistics
Absolute	2.01 Miles	3.13 Miles
High Priority	21.46	4.13
Moderate Priority	7.71	3.78
Low Priority	2.67	0.43
Areas Not Observed	4.47	0.14

SOURCES

Shoreline priority was derived by citizen contributors to the Moose Lake Legacy Initiative and members of the Couderay Waters Regional Land Trust on June 11, 2009 at the Hayward Public Library. The following criteria were applied and quantified to derive results:

- Aquatic Macrophytes
 - High = Mixed varieties of aquatic macrophytes
 - Mod = Monocultures of aquatic macrophytes
 - Low = Absence of aquatic macrophytes
- Wildlife Observations
 - High = Loon nests and Osprey nest platforms
 - Remaining shorelines not rated
- Ecological Reference Areas and Refugia
 - Absolute = White cedar and dominant hemlock present
 - Remaining shorelines not rated
- Veteran Trees
 - High = Areas where veteran trees are present
 - Remaining shorelines not rated
- Aesthetic Shoreline Condition
 - High = Shorelines in a natural condition
 - Mod = Shorelines moderately modified
 - Low = Shorelines highly modified
- Coarse Woody Structure (CWS)
 - High = CWS located continuously or scattered along the shoreline
 - Low = CWS isolated or absent along the shoreline

Map Crafted by Douglas Miskowiak -- Version 6/25/09



Moose Lake
Legacy Initiative

Sponsored by Couderay Waters Regional Land Trust, Inc.
Funding from the Wisconsin Department of Natural Resources
Lake Planning Grant Program

