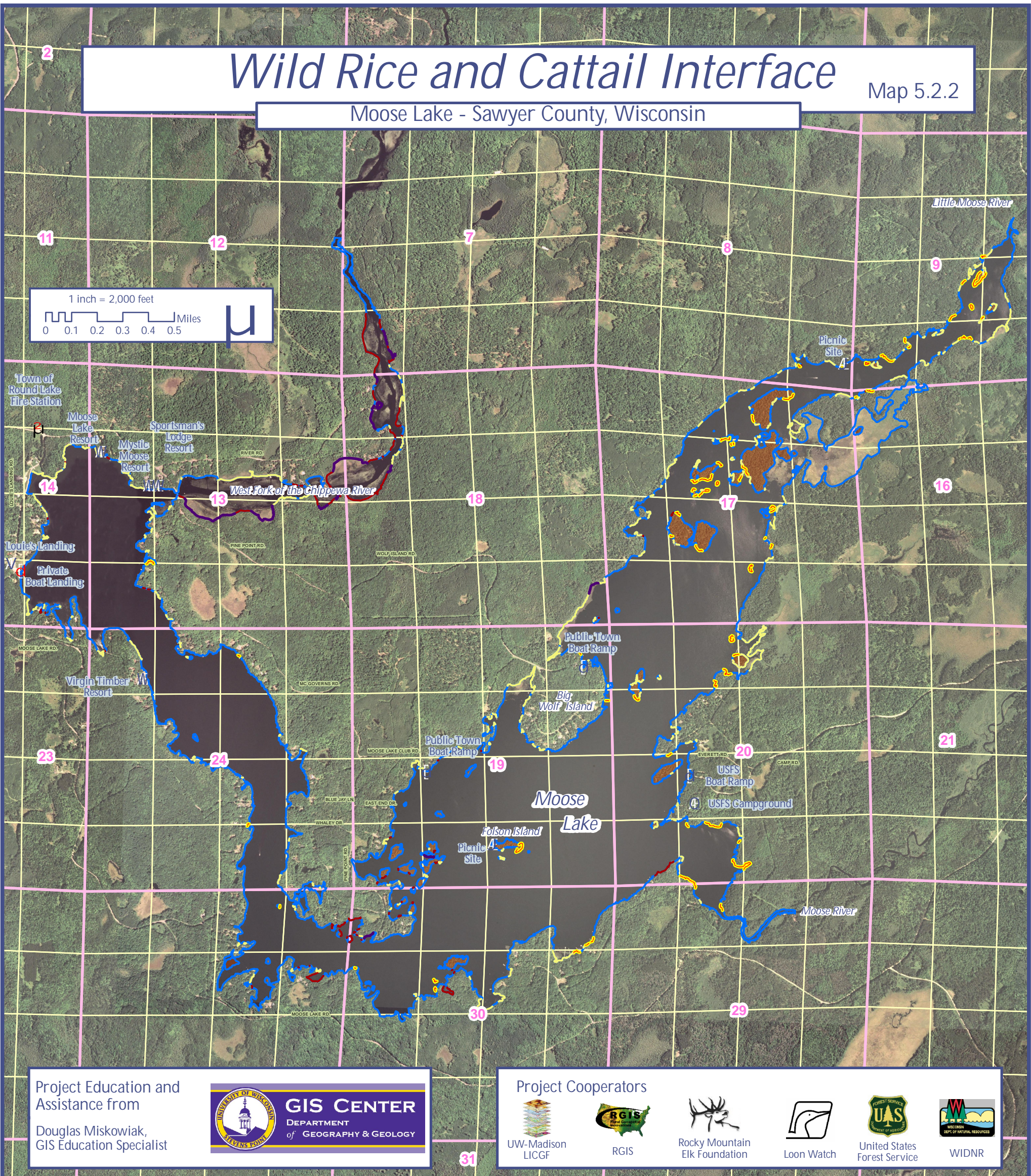


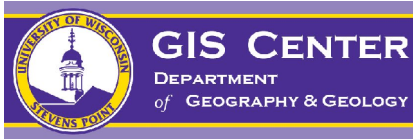
# Wild Rice and Cattail Interface

Map 5.2.2

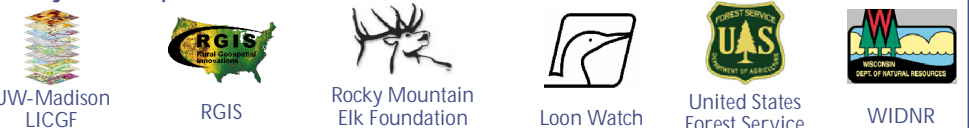
Moose Lake - Sawyer County, Wisconsin



Project Education and Assistance from  
Douglas Miskowiak,  
GIS Education Specialist



Project Cooperators



## WILD RICE and CATTAIL INTERFACE

- Wild Rice/ Cattail Interface
- Broad-leaf Cattail
- Narrow-leaf Cattail
- Wild Rice
- Remaining Shoreline

## DATA SOURCES

The wild rice and cattail interface show locations where both wild rice and cattails are found present together. These are locations where cattails will likely dominate and eventually drive out remaining wild rice, unless managed.

Wild rice and cattail interface identified by Douglas Miskowiak, UWSP GIS Center using an attribute query for wild rice and cattails, June 1, 2009.

Map Crafted by Douglas Miskowiak -- Version 6/1/09



Moose Lake  
Legacy Initiative

Sponsored by Couderay Waters Regional Land Trust, Inc.  
Funding from the Wisconsin Department of Natural Resources  
Lake Planning Grant Program

