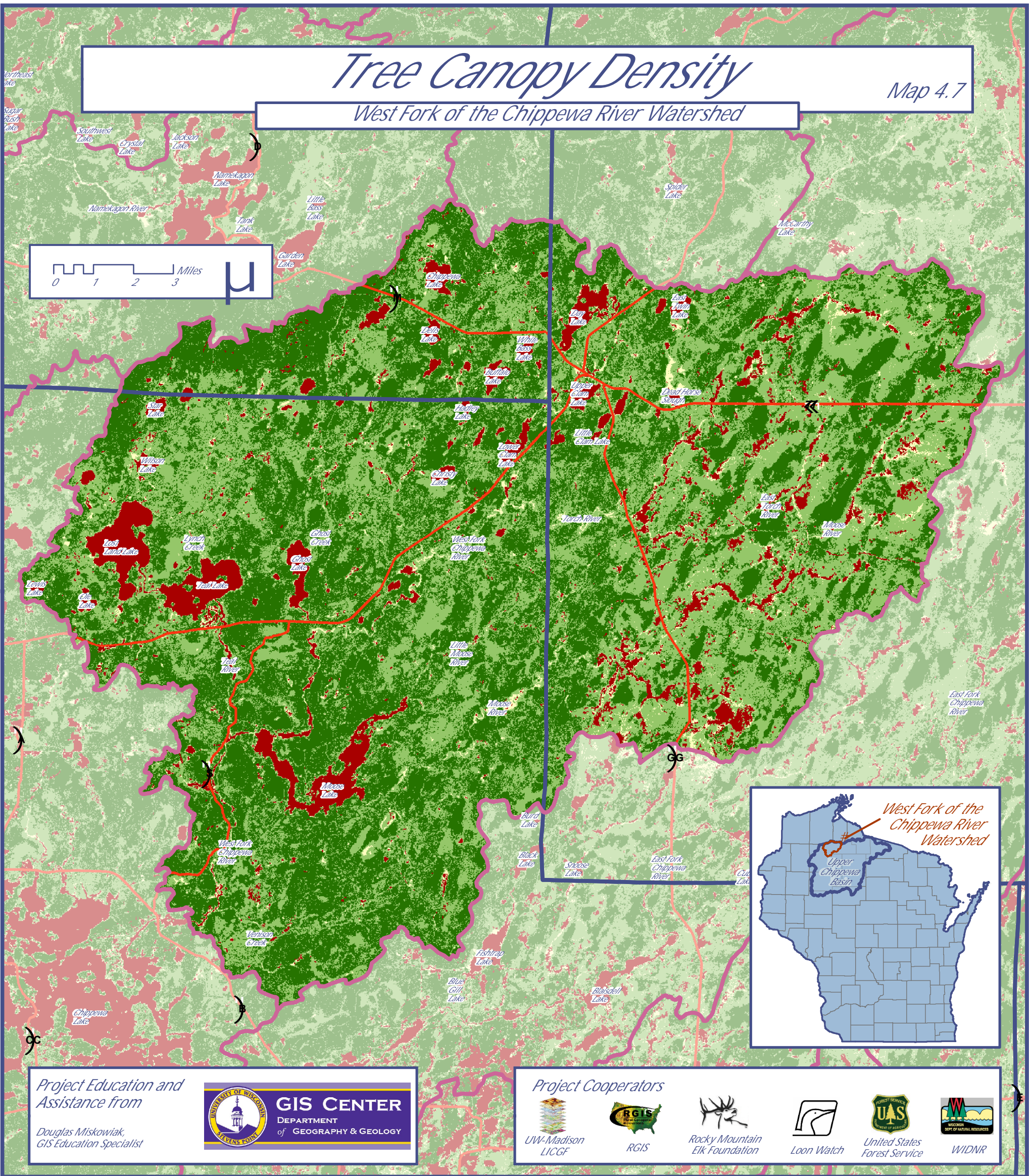


Tree Canopy Density

Map 4.7

West Fork of the Chippewa River Watershed



Project Education and Assistance from

Douglas Miskowiak,
GIS Education Specialist



GIS CENTER
DEPARTMENT
of GEOGRAPHY & GEOLOGY

Project Cooperators



UW-Madison
LICGF



RGIS



Rocky Mountain
Elk Foundation



Loon Watch



United States
Forest Service



WIDNR

LEGEND

- 0 Percent Forested
- 1 - 23
- 24 - 65
- 66 - 87
- 88 - 100
- Watershed Boundaries
- County Boundaries

DATA SOURCES

Tree canopy density from the National Land Cover Database, 2001. This data layer is an ESRI GRID delineating percent tree canopy (0-100%) using 30-meter square cells. Database project conducted by the Multi-Resolution Land Characteristics Consortium - a partnership among federal agencies including:

- U.S. Geological Survey
- National Oceanic and Atmospheric Administration
- U.S. Environmental Protection Agency
- U.S. Department of Agriculture
- U.S. Forest Service
- National Park Service
- U.S. Fish and Wildlife Service
- Bureau of Land Management
- USDA Natural Resources Conservation Service

Map Crafted by Douglas Miskowiak -- Version 4/21/09



**Moose Lake
Legacy Initiative**

Sponsored by Couderay Waters Regional Land Trust, Inc.

Funding from the Wisconsin Department of Natural Resources
Lake Planning Grant Program

