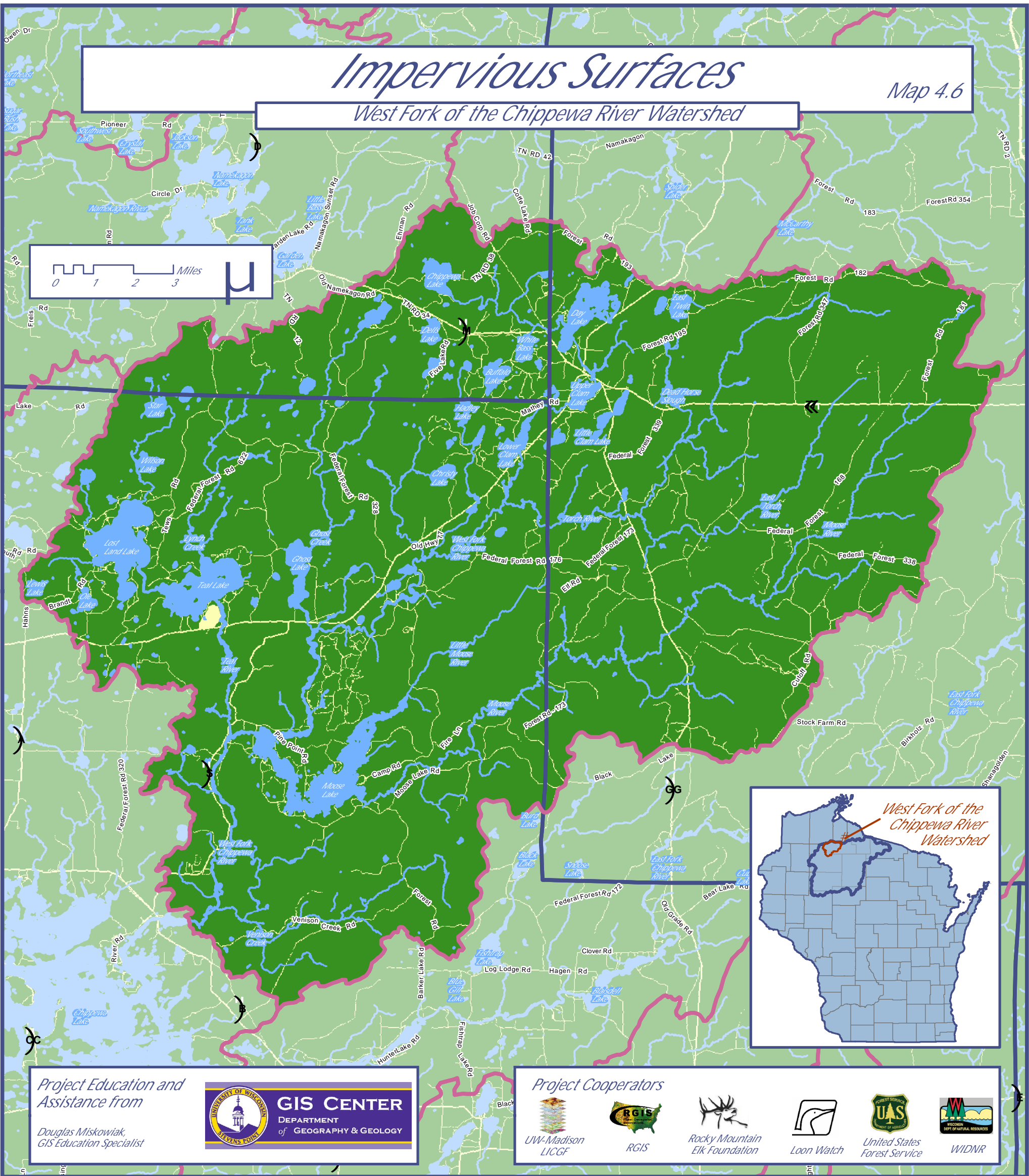


# Impervious Surfaces

Map 4.6

## West Fork of the Chippewa River Watershed



### Project Education and Assistance from

Douglas Miskowiak,  
GIS Education Specialist



**GIS CENTER**  
DEPARTMENT  
of GEOGRAPHY & GEOLOGY

### Project Cooperators



### LEGEND and WATERSHED STATISTICS

- Pervious Surface (entire pixel\* is pervious to water) = 97 percent of the watershed
- Impervious Surface (part of the pixel\* is impervious to water) = 3 percent of the watershed
- Surface Water
- Watershed Boundaries
- County Boundaries

\* The size of a pixel is 30 meters square or approximately .2224 acres. Data from satellite imagery likely underestimates impervious surfaces. Features, such as driveways and houses that are covered with a dense tree canopy might not be visible for satellite interpretation.

### DATA SOURCES

Imperviousness data from the National Land Cover Database, 2001. This data layer is an ESRI GRID delineating percent surface imperviousness (0- 100%) using 30 meter square cells. Database project conducted by the Multi-Resolution Land Characteristics Consortium - a partnership among federal agencies including:

- U.S. Geological Survey
- National Oceanic and Atmospheric Administration
- U.S. Environmental Protection Agency
- U.S. Department of Agriculture
- U.S. Forest Service
- National Park Service
- U.S. Fish and Wildlife Service
- Bureau of Land Management
- USDA Natural Resources Conservation Service

Map Crafted by Douglas Miskowiak -- Version 4/21/09



**Moose Lake  
Legacy Initiative**

Sponsored by Couderay Waters Regional Land Trust, Inc.

Funding from the Wisconsin Department of Natural Resources  
Lake Planning Grant Program

