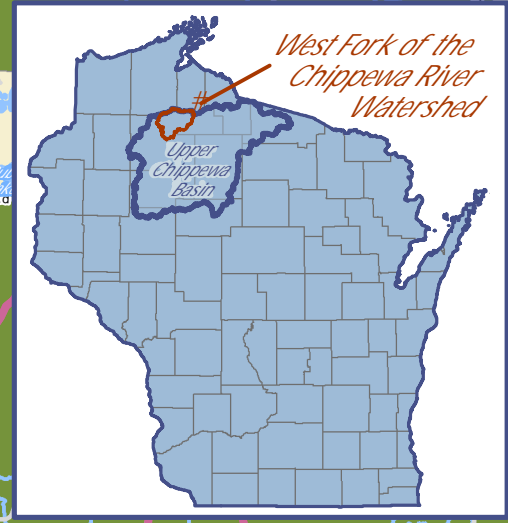
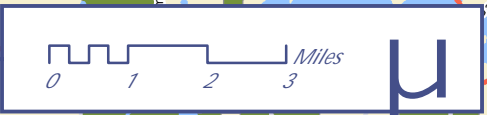
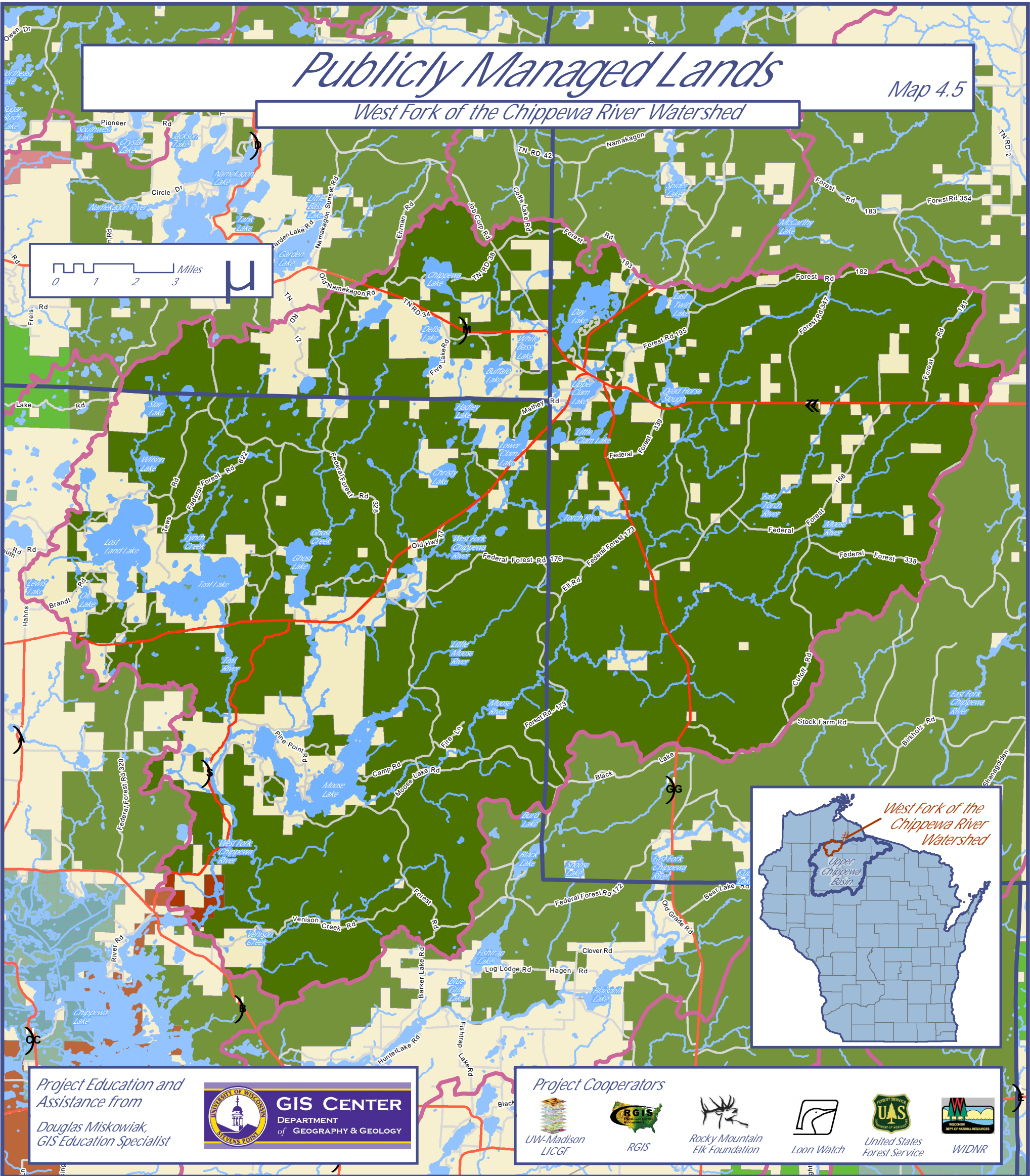


Publicly Managed Lands

Map 4.5

West Fork of the Chippewa River Watershed



Project Education and Assistance from
Douglas Miskowiak,
GIS Education Specialist

Project Cooperators

LEGEND and WATERSHED STATISTICS		
	Watershed Boundaries	182,258 acres 100%
	National Forests	145,195 acres 80%
	Private Ownership	36,493 acres 20%
	Lac Courte Oreilles	570 acres < 0.3%
	Federal Lands	Namekagon Riverway located in Namekagon River Watershed
	DNR Managed Lands	Chippewa Flowage lands located in Lake Chippewa Watershed
	County Forests	Sawyer County Forest located in Lake Chippewa and Namekagon River Watersheds
	Surface Water	
	Major Highways	
	Roads	
	County Boundaries	

DATA SOURCES

National Forests from the WDNR believed to be from U.S. Forest Service 1:24,000 sources.

Private ownership is denoted as areas that are not national forests, federal lands, DNR managed lands, county forests, or owned by the Lac Courte Oreilles.

Federal Lands from the WDNR, not including national forests.

Lac Courte Oreilles lands from the U.S. Census Bureau, Wisconsin Office of Land Information Services, 2000.

WDNR Managed Lands from the WDNR facilities and lands oracle land records system, 2002.

County Forests from the WDNR mapped to the PLSS quarter-quarter section.

Map Crafted by Douglas Miskowiak -- Version 4/23/09

Sponsored by Couderay Waters Regional Land Trust, Inc.
Funding from the Wisconsin Department of Natural Resources
Lake Planning Grant Program