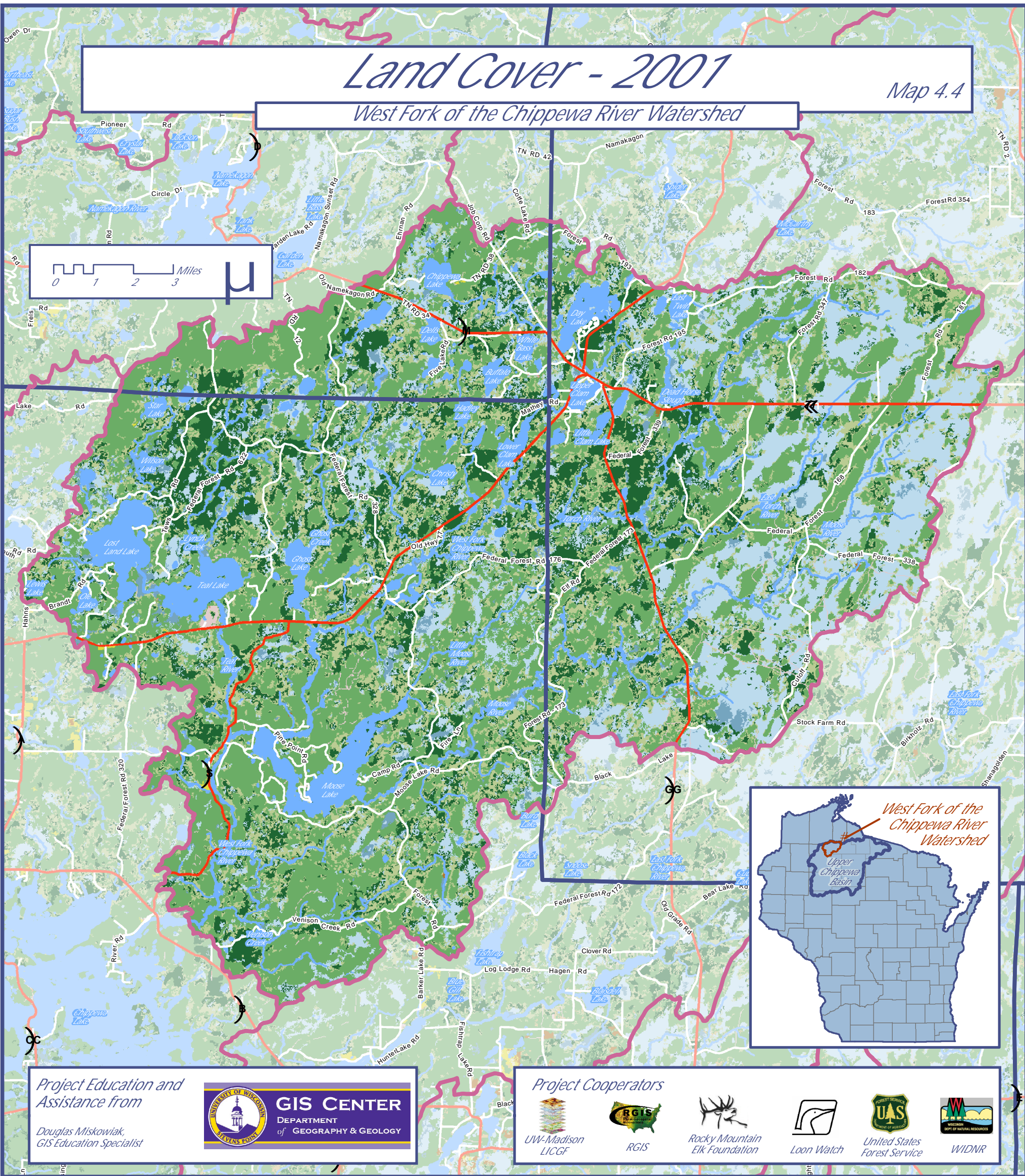


Land Cover - 2001

Map 4.4

West Fork of the Chippewa River Watershed



Project Education and Assistance from

Douglas Miskowiak,
GIS Education Specialist



GIS CENTER
DEPARTMENT
of GEOGRAPHY & GEOLOGY

Project Cooperators



LEGEND and WATERSHED STATISTICS

Land Cover

- Barren Land (Rock/Sand/Clay) = 10 acres
- Cultivated Crops = 75 acres
- Deciduous Forest = 70,828 acres
- Developed - High Intensity = 0 acres
- Developed - Low Intensity = 609 acres
- Developed - Medium Intensity = 21 acres
- Developed - Open Space = 2,025 acres

- Emergent Herbaceous Wetlands = 4,917 acres
- Evergreen Forest = 27,670 acres
- Grassland/Herbaceous = 130 acres
- Mixed Forest = 31,546 acres
- Pasture/Hay = 65 acres
- Shrub/Scrub = 30 acres
- Woody Wetlands = 34,278 acres
- Watershed Boundaries

DATA SOURCES

Land Cover from the National Land Cover Database, 2001. Database project conducted by the Multi-Resolution Land Characteristics Consortium - a partnership among federal agencies including:

- U.S. Geological Survey
- National Oceanic and Atmospheric Administration
- U.S. Environmental Protection Agency
- U.S. Department of Agriculture
- U.S. Forest Service
- National Park Service
- U.S. Fish and Wildlife Service
- Bureau of Land Management
- USDA Natural Resources Conservation Service

Map Crafted by Douglas Miskowiak -- Version 4/21/09



**Moose Lake
Legacy Initiative**

Sponsored by Couderay Waters Regional Land Trust, Inc.

Funding from the Wisconsin Department of Natural Resources
Lake Planning Grant Program

