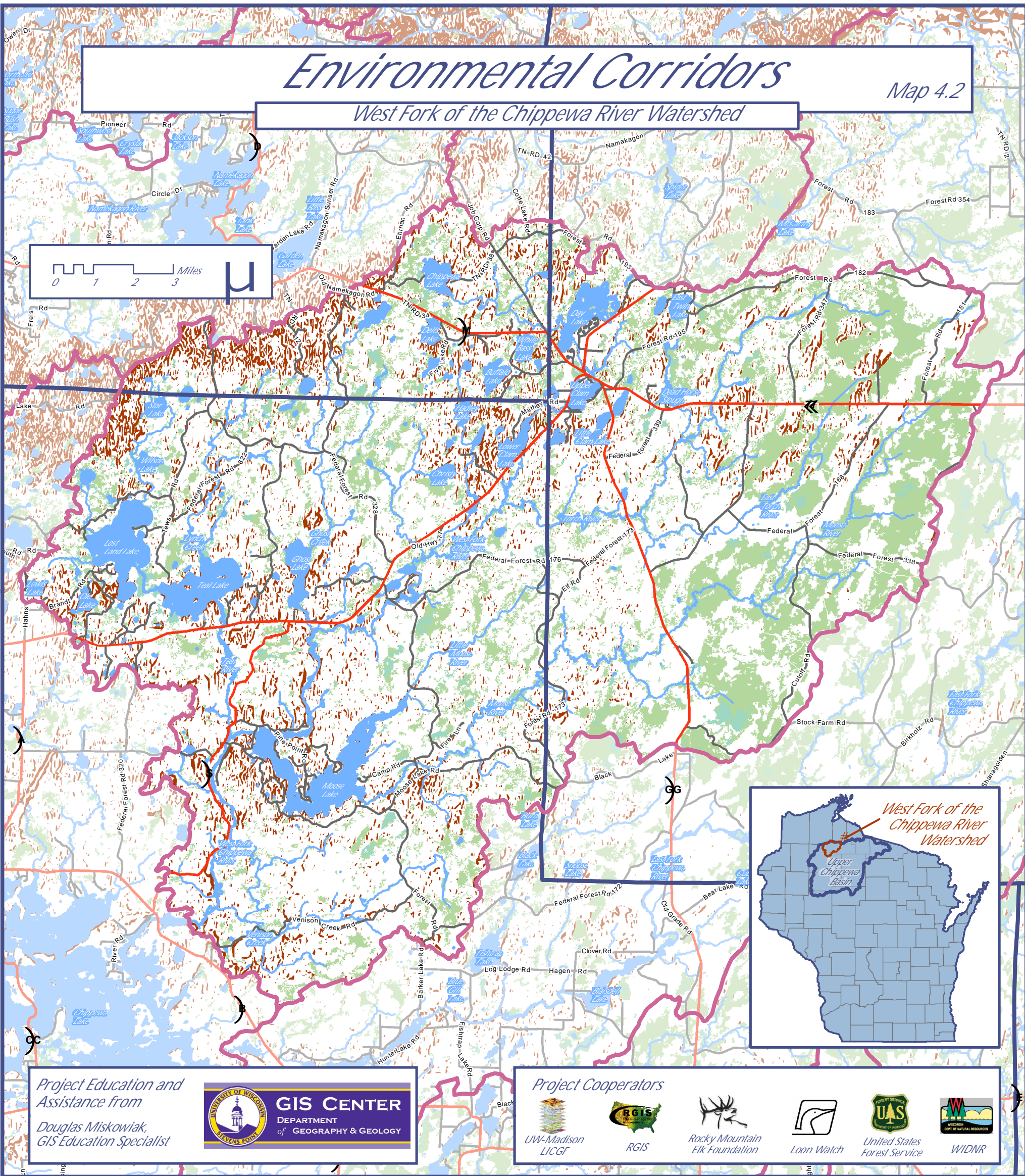


Environmental Corridors

Map 4.2

West Fork of the Chippewa River Watershed



Project Education and Assistance from
Douglas Miskowiak,
GIS Education Specialist



GIS CENTER
DEPARTMENT
of GEOGRAPHY & GEOLOGY

Project Cooperators



LEGEND and WATERSHED STATISTICS

- Surface Water = 10,050 acres
- Emergent Herbaceous Wetlands = 4,917 acres
- Woody Wetlands = 34,278 acres
- Slopes $\geq 12.5\%$ = 13,791 acres
- Watershed Boundaries
- Major Highways
- Roads
- County Boundaries

DATA SOURCES

Surface water and wetlands from National Land Cover Database, 2001.
Slopes greater than 12.5% derived using ArcGIS Spatial Analyst and from the WDNR 30 meter digital elevation model.

Map Crafted by Douglas Miskowiak -- Version 4/23/09



**Moose Lake
Legacy Initiative**

Sponsored by Couderay Waters Regional Land Trust, Inc.
Funding from the Wisconsin Department of Natural Resources
Lake Planning Grant Program

