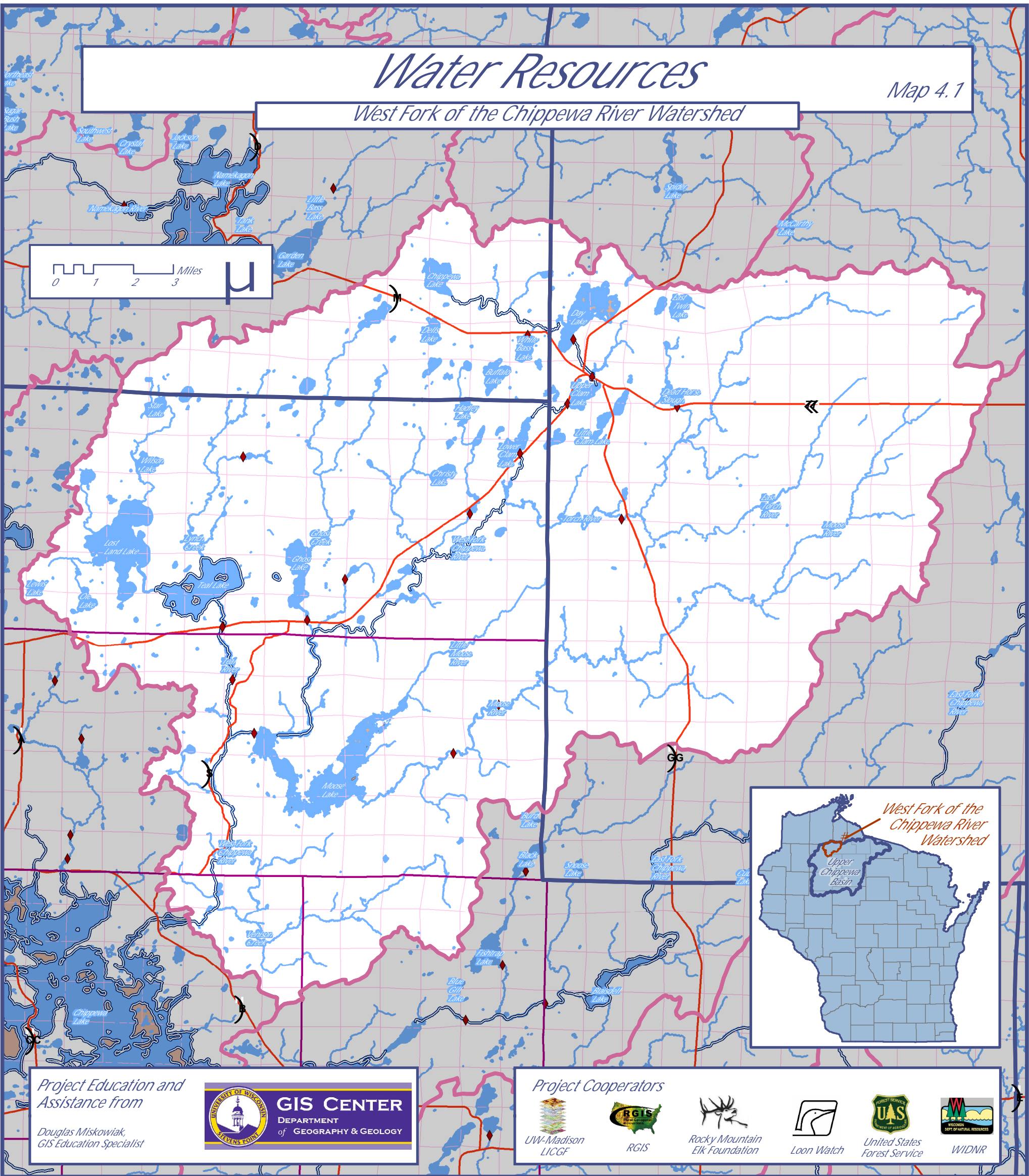


Water Resources

Map 4.1

West Fork of the Chippewa River Watershed



Project Education and Assistance from

Douglas Miskowiak, GIS Education Specialist

Project Cooperators

LEGEND

- Watershed Boundaries
- County Boundaries
- Municipal Boundaries
- Dam
- Major Highways
- Outstanding and Exceptional Resource Waters
- Public Land Survey System Section Boundaries
- Islands
- Surface Water

WATER RESOURCES STATISTICS

Watershed Area = 182,401 acres

Surface Water Area = 9,019 acres

Number of Islands = 173

Island Area = 253 acres

Total Shoreline = 525 miles (BK & ST)

Outstanding Resource Waters = 52 miles

Number of Dams = 18

DATA SOURCES

Surface waters and islands from the Wisconsin Department of Natural Resources 1:24,000 Hydrography IV database, 2006.

Watersheds from the Wisconsin Department of Natural Resources derived from 1:24,000 topographic maps.

Dams from the Wisconsin Department of Natural Resources. Data includes large, small, abandoned and removed dams.

Outstanding and Exceptional Resource Waters from the Wisconsin Department of Natural Resources. Additions reflecting status in 2007 were updated to the database by Douglas Miskowiak.

Surface water area statistic derived by measuring open-water or HYDSHA1 polygons.

Total Shoreline statistic derived by measuring line segments with attributes representing single-line streams, banks, or shorelines.

Outstanding Resource Waters statistic derived by measuring the shoreline of designated lakes and the centerline of designated rivers and streams.

Map Crafted by Douglas Miskowiak -- Version 4/21/09

Moose Lake Legacy Initiative

Sponsored by Couderay Waters Regional Land Trust, Inc.

Funding from the Wisconsin Department of Natural Resources Lake Planning Grant Program