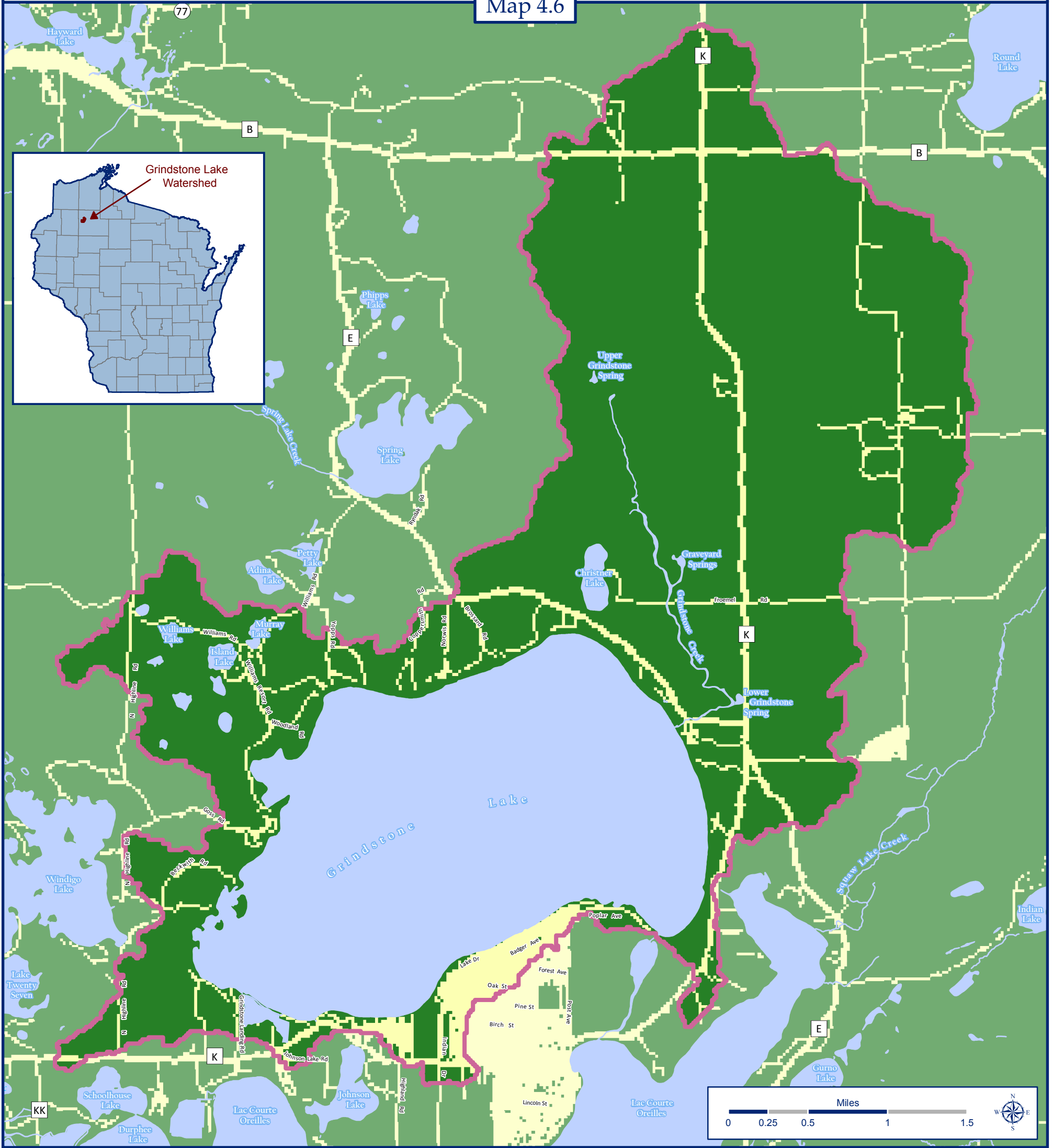


Impervious Surfaces

Grindstone Lake Watershed, Sawyer County, Wisconsin

Map 4.6



Impervious Surfaces and Watershed Statistics

- Pervious Surface (entire pixel is pervious to water) — 93 percent of the watershed
- Impervious Surface (part of the pixel is impervious to water) — 7 percent of the watershed
- Surface Water
- Watershed Boundaries

* The size of a pixel is 30 meters square or approximately .2224 acres. Data from satellite imagery likely underestimates impervious surfaces. Features, such as driveways and houses that are covered with a dense tree canopy might not be visible for satellite interpretation.

Grindstone Lake Watershed equals 11,700 total acres

Data Sources

Imperviousness data from the National Land Cover Database, 2001. This data layer is an ESRI Grid delineating percent surface imperviousness (0-100%) using 30 meter square cells. Database project conducted by the Multi-Resolution Land Characteristics Consortium - a partnership among federal agencies including:

- U.S. Geological Survey
- National Oceanic and Atmospheric Administration
- U.S. Environmental Protection Agency
- U.S. Department of Agriculture
- U.S. Forest Service
- National Park Service
- U.S. Fish and Wildlife Service
- Bureau of Land Management
- USDA Natural Resources Conservation Service

Map Created by Jon Galloy & Michael Broton -- Version 1/18/2011

Funding by Wisconsin Department of Natural Resources Lake Planning Grant Program



Sponsored by the Grindstone Lake Association