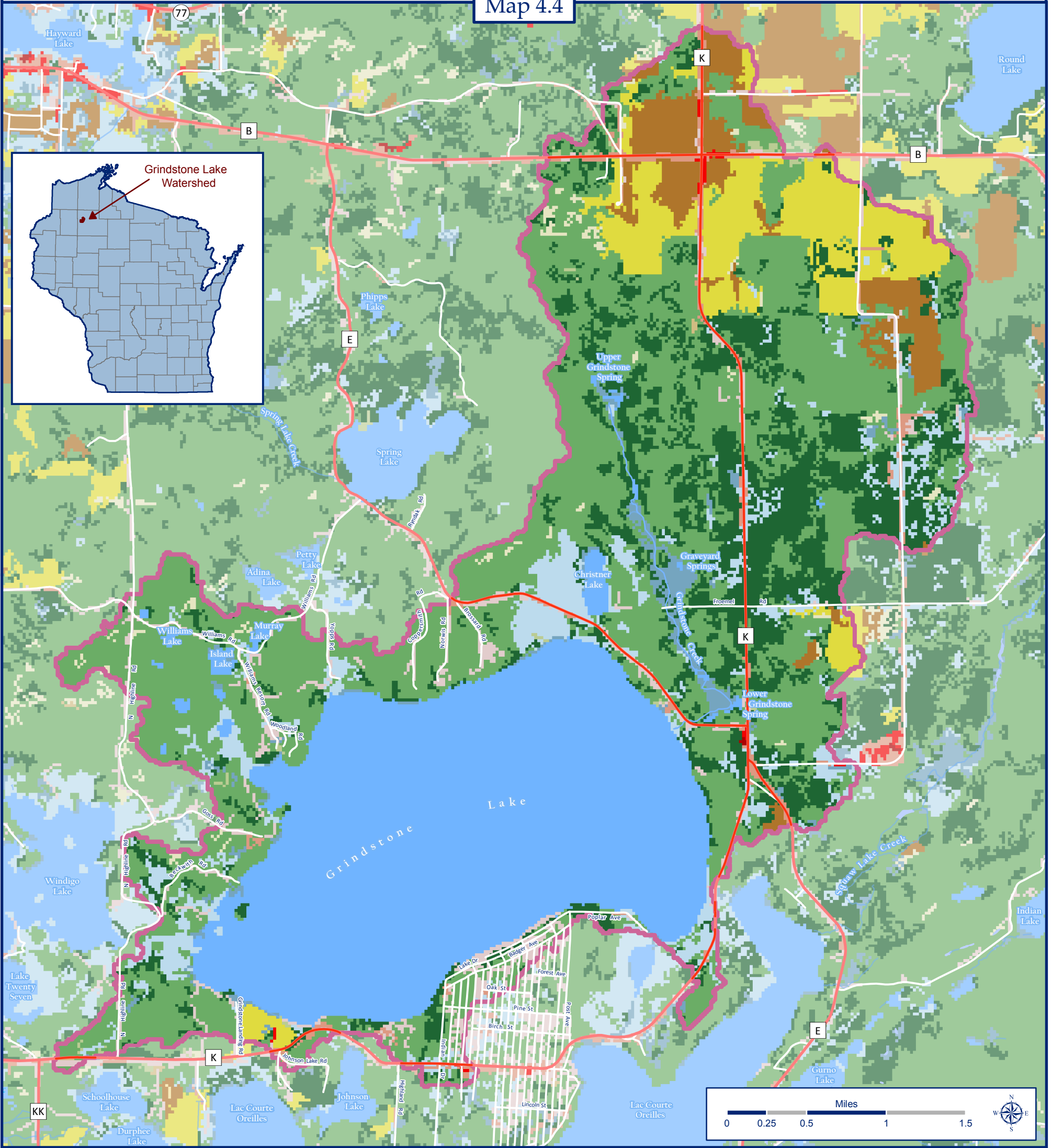


# Landcover ~ 2001

## Grindstone Lake Watershed, Sawyer County, Wisconsin

Map 4.4



### Land Cover and Watershed Statistics

	Cultivated Crops	467 Acres		Grassland/Herbaceous	64 Acres
	Deciduous Forest	4,195 Acres		Mixed Forest	23 Acres
	Developed - High Intensity	1 Acre		Open Water	3,261 Acres
	Developed - Low Intensity	158 Acres		Pasture/Hay	744 Acres
	Developed - Medium Intensity	15 Acres		Shrub/Scrub	3 Acres
	Developed - Open Space	304 Acres		Woody Wetlands	626 Acres
	Emergent Herbaceous Wetlands	166 Acres		Watershed Boundaries	
	Evergreen Forest	1,673 Acres		County Trunk Highway	

Grindstone Lake Watershed equals 11,700 total acres

### Data Sources

Land cover from the National Land Cover Database, 2001. Database project conducted by the Multi-Resolution Land Characteristics Consortium - a partnership among federal agencies including:

- U.S. Geological Survey
- National Oceanic and Atmospheric Administration
- U.S. Environmental Protection Agency
- U.S. Department of Agriculture
- U.S. Forest Service
- National Park Service
- U.S. Fish and Wildlife Service
- Bureau of Land Management
- USDA Natural Resources Conservation Service

Map Created by Jon Galloy & Michael Broton -- Version 1/21/2011

Funding by Wisconsin Department of Natural Resources Lake Planning Grant Program



Sponsored by the Grindstone Lake Association