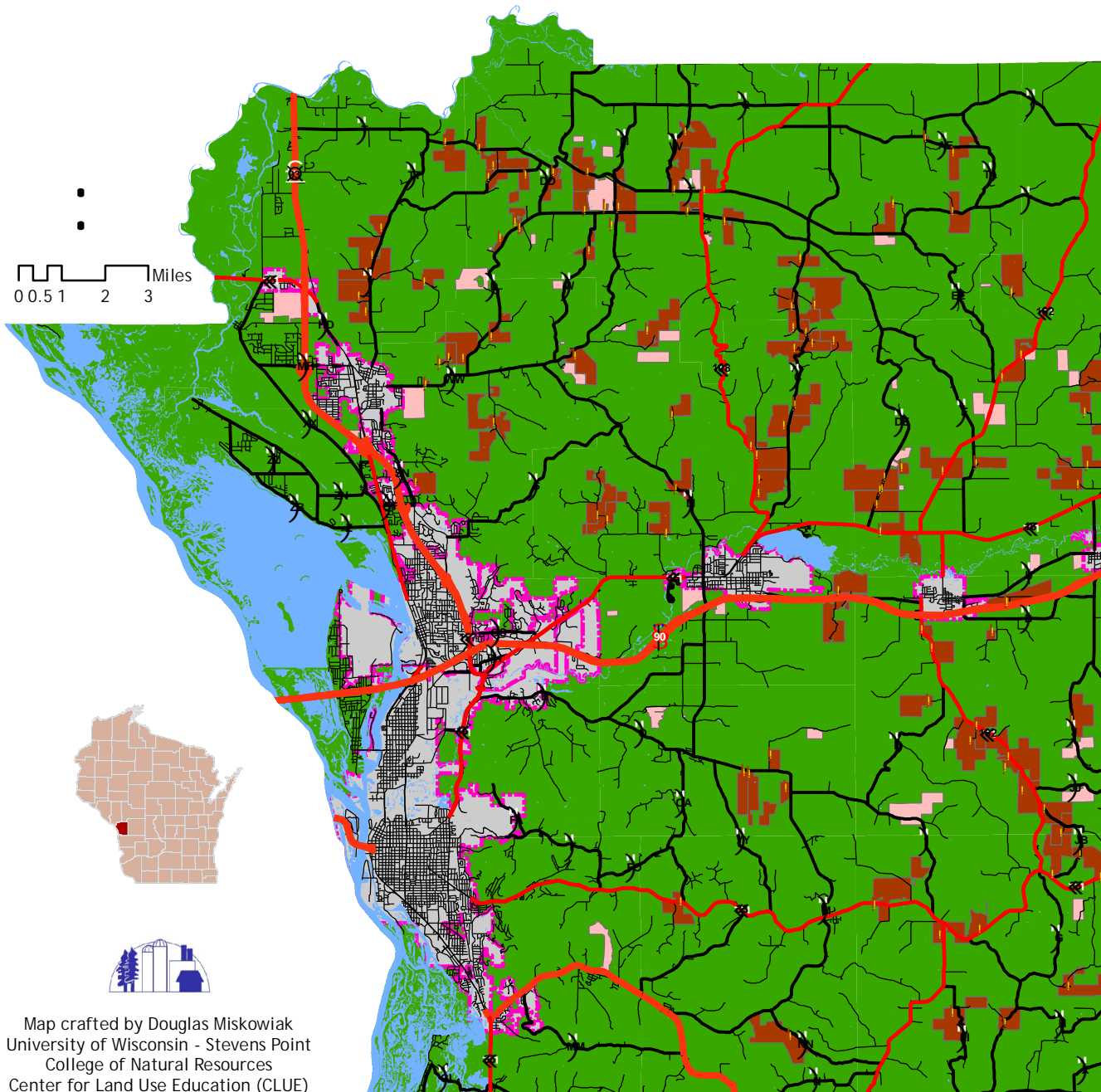


Publicly Funded Stewardship Practices

Map 6.2

La Crosse County, Wisconsin

Targeting Priority Working Lands Pilot Project



Map Description

This map displays the evaluation of working lands based upon receipt of public funding to implement stewardship practices (improved feedlots). Contiguous working lands that have received public funding receive a score of 100 out of 100. All other areas, including non-contiguous working lands of operations that received funding receive a score of 0. Amounts of public funding vary among individual operations.

Legend

- Publicly Funded Stewardship = 100 Points
- Non-Contiguous Ownership = 0 Points
- Other Areas = 0 Points
- Location of Publicly Funded Feedlots

Methods

Locations of publicly funded feedlots were draped over La Crosse County parcel data. Underlying parcels and parcels owned by the same person/entity were selected. Parcels geographically separated from the initial feedlot location by such features as roads or streams remained selected. Parcels geographically separated from the initial feedlot and not in close proximity were removed from the selection. Scoring criteria were established by the facilitator to incite discussion among committee members. Scoring criteria have not been fully deliberated by the committee.

Map crafted by Douglas Miskowiak
University of Wisconsin - Stevens Point
College of Natural Resources
Center for Land Use Education (CLUE)