

Distance from Urban Feeder Highways

Map 6.5

La Crosse County, Wisconsin

Targeting Priority Working Lands Pilot Project

Map Description

This map displays the evaluation of working lands based on their distance to urban feeder highways. Working lands in close proximity to urban feeder highways score less than working lands further away.

Legend

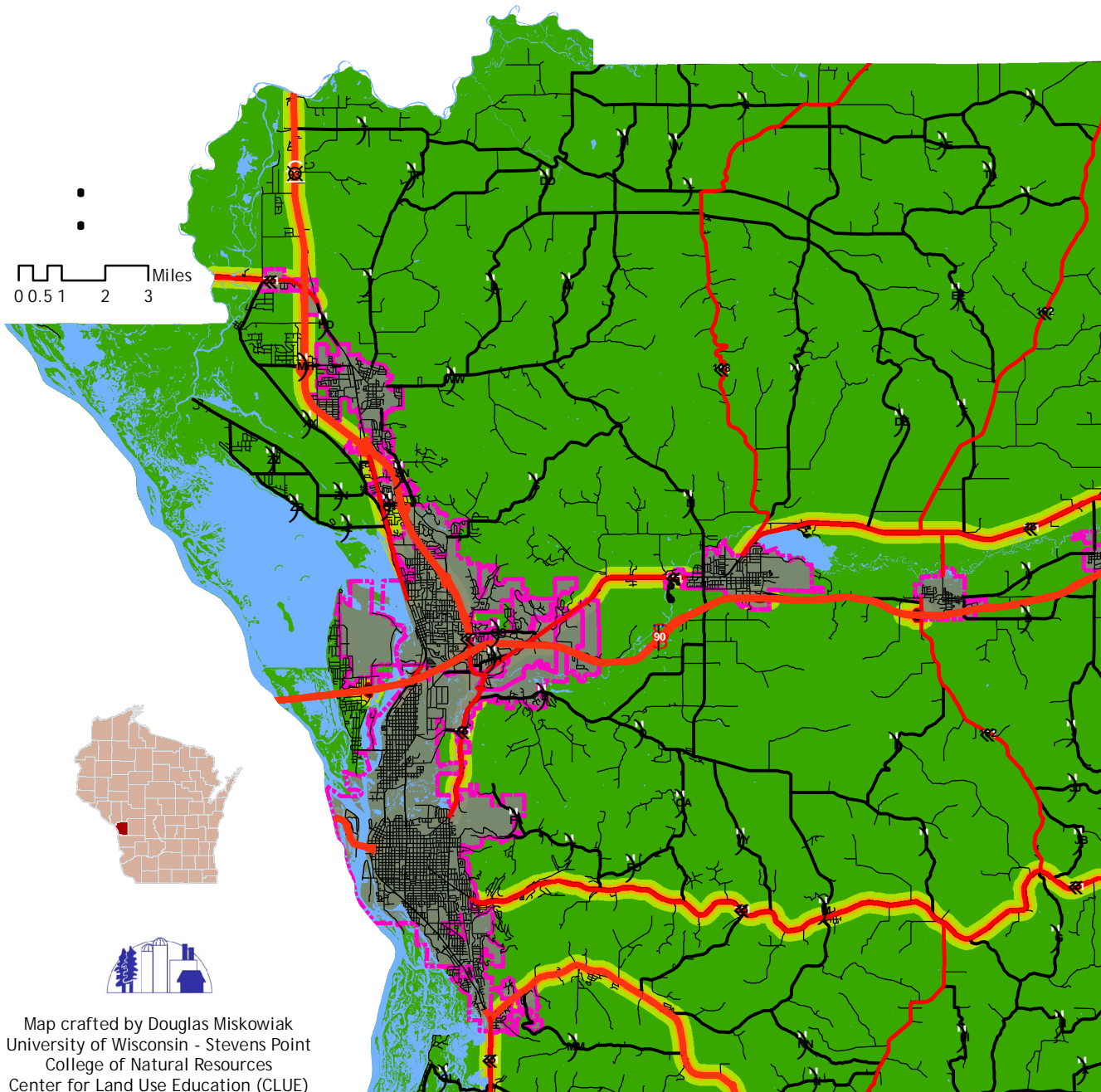
Distance from Urban Feeder Highways

- 25 Points (Adjacent to Highways)
- 50 Points (330 - 660 Feet)
- 75 Points (660 - 1320 Feet)
- 100 Points (> 1320 Feet)
- Cites and Villages

Methods

The following draft criteria were applied to create this map (see report for details). Urban feeder highways, including 14, 16, 33, 35, 93, 157 and I-90 ramps were buffered and scored as follows.

- Adjacent to highways = 25 Points
- 330 - 660 feet from highways = 50 Points
- 660 - 1320 feet from highways = 75 Points
- Greater than 1320 feet = 100 Points



Map crafted by Douglas Miskowiak
University of Wisconsin - Stevens Point
College of Natural Resources
Center for Land Use Education (CLUE)