

LESA Calibration Exercise

Map 8.1



La Crosse County, Wisconsin

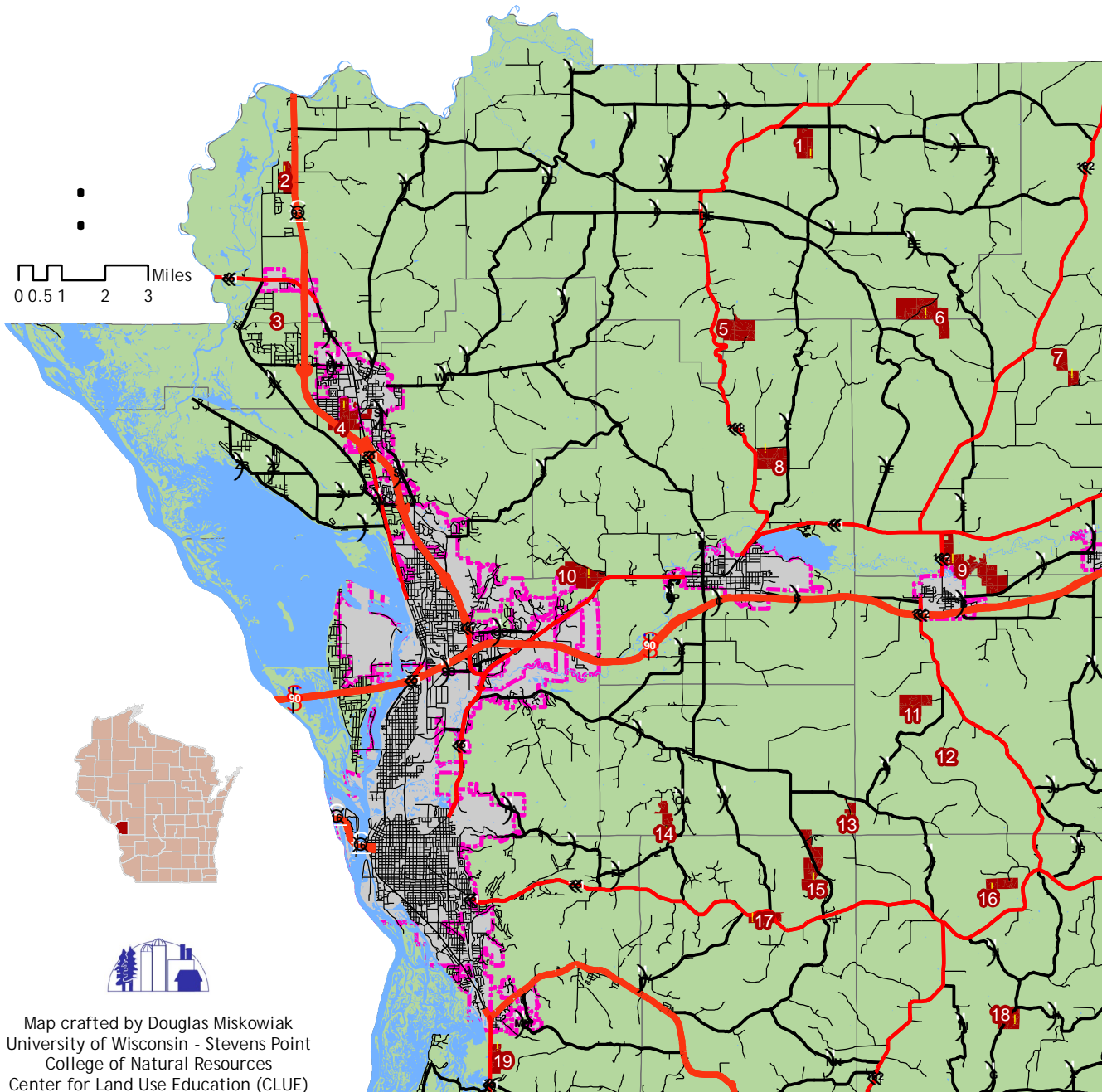
Targeting Priority Working Lands Pilot Project

Map Description

Use this map to locate working lands and operations to score. The results of this exercise will be used to calibrate the LESA model developed by the working lands committee. This map is accompanied by addresses (see reverse) and written instructions (see handout).

Legend

-  Calibration Sites
-  Randomly Selected Locations



Methods

Randomly selected locations identified utilizing ArcGIS "Create Random Points" Tool. Initially, two locations were identified in each PLSS township. Locations that did not overlap with identified working lands were eliminated (e.g. within city boundaries). Parcel boundaries intersecting point locations were selected. Parcels under common ownership were selected. Non-contiguous parcels were eliminated.

Map crafted by Douglas Miskowiak
University of Wisconsin - Stevens Point
College of Natural Resources
Center for Land Use Education (CLUE)