

Future Land Uses

Map 6.6

La Crosse County, Wisconsin

Targeting Priority Working Lands Pilot Project

Map Description

This map displays the evaluation of working lands based on the preferred future land use districts found in town comprehensive plans. Future land use districts that limit development and work to protect working lands receive high scores. Future land use districts that promote future urban development receive low scores.

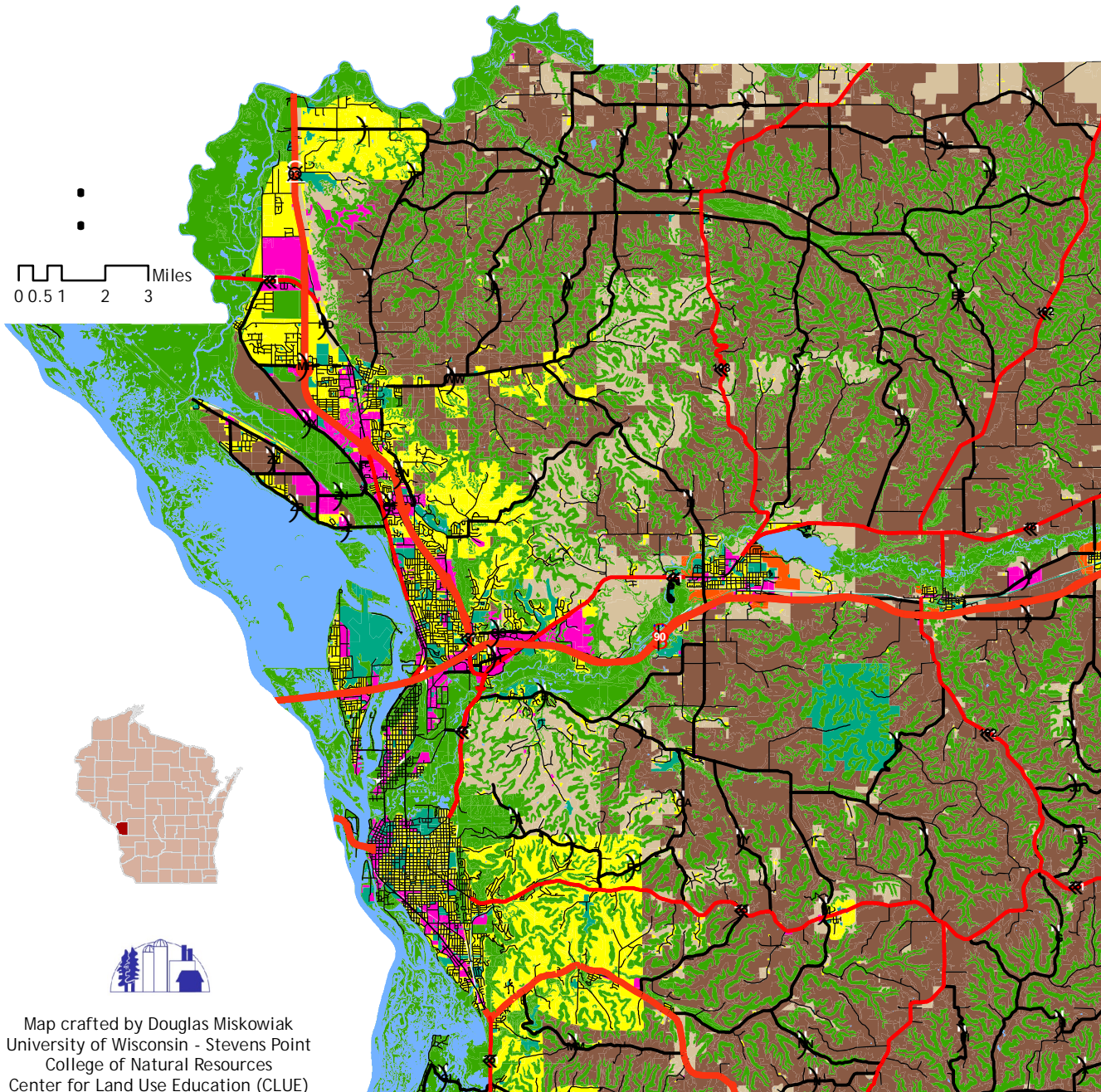
Legend

Future Land Use Districts

- Existing Exclusive Agriculture = 100 Points
- Agriculture and Rural = 50 Points
- Environmental = 80 Points
- Non-Residential = 0 Points
- Public Institutional = 0 Points
- Residential = 0 Points
- Planned Growth Areas = 0 Points
- Water

Methods

A simple set of logic was applied to develop this scoring criteria. Future land use districts that promote future urban development receive low scores. Districts dedicated to preserving working lands receive high scores (see report for details).



Map crafted by Douglas Miskowiak
University of Wisconsin - Stevens Point
College of Natural Resources
Center for Land Use Education (CLUE)