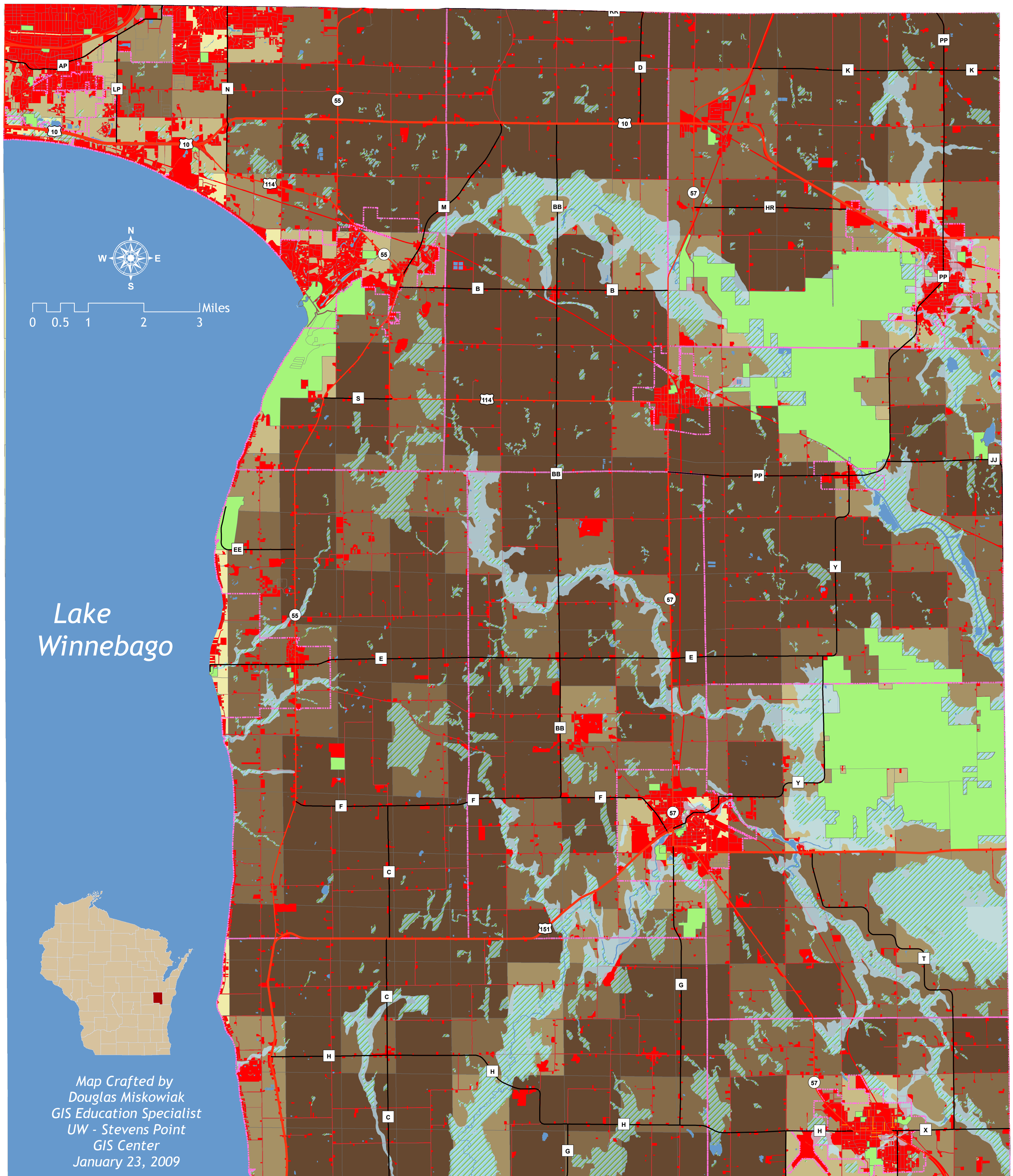


# Compatibility with Surrounding Land Uses

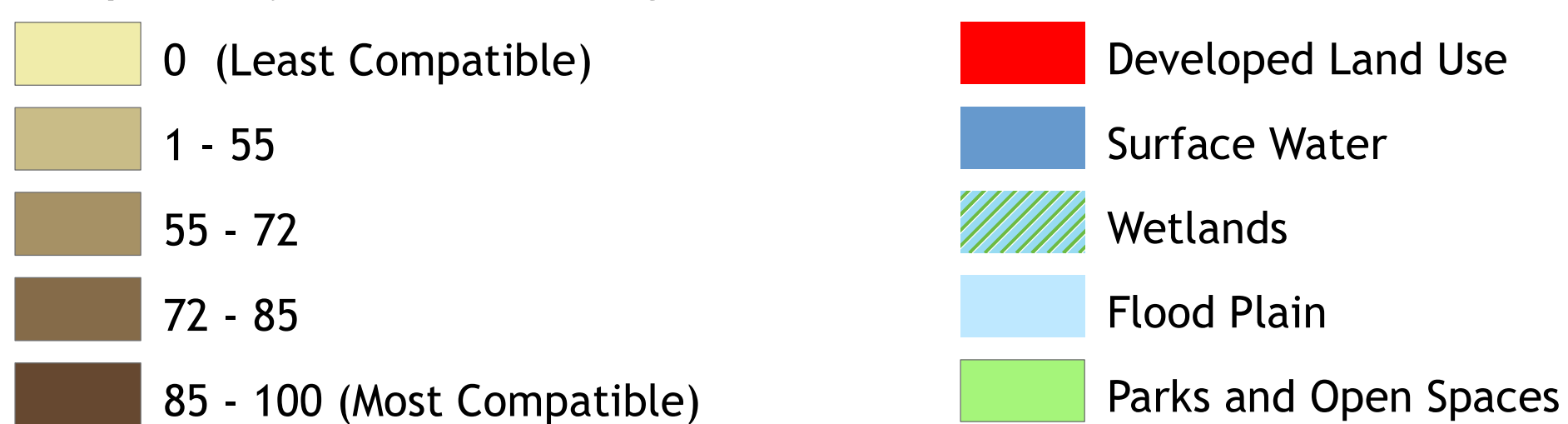
Map 6.2

## Calumet County, Wisconsin

Targeting Priority Working Lands Pilot Project



### Compatibility with Surrounding Land Uses



### Map Description

This map displays compatibility with surrounding land uses on a scale of 0 - 100 (least to most compatible). Sections with high scores (dark brown) are most compatible with surrounding working lands. Developed land uses, surface waters, wetlands, floodplains, and parks and open spaces are shown on the map and influence the section's score (see methods).

### Methods

The following draft criteria were applied in creating this map.

Working Lands contribute 100% point value for each acre.

Developed Land Uses contribute 0% point value for each acre.

Non-Working/Non-Developed Land Uses contribute 50% point value for each acre.

If developed land uses exceed 75%, then section receives a score of 0 points.

Scores from neighboring sections are averaged into the final section score.