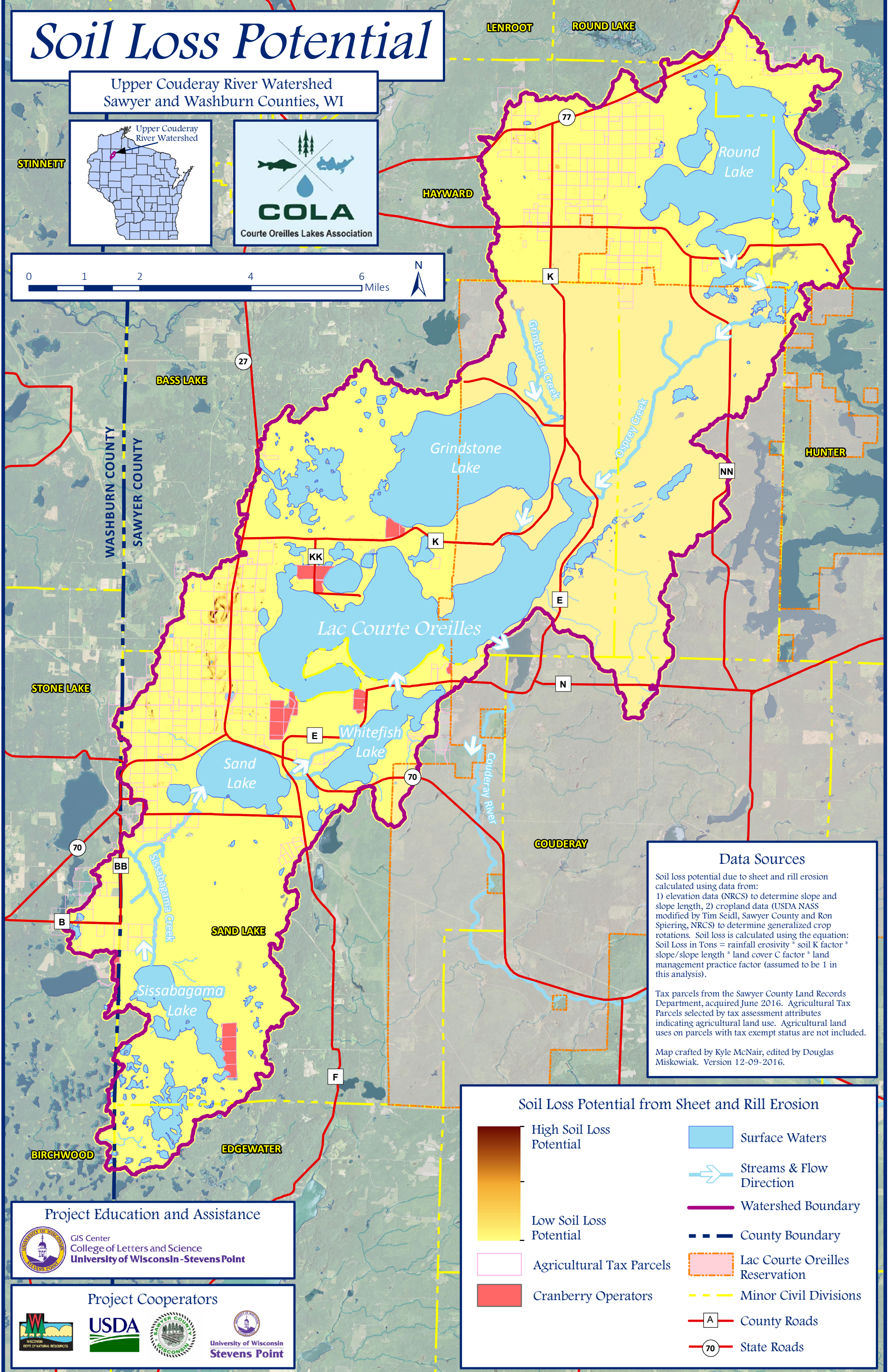
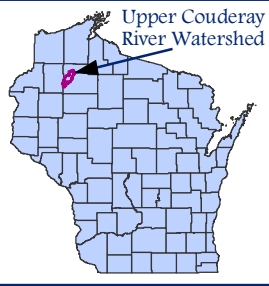


Soil Loss Potential

Upper Couderay River Watershed
Sawyer and Washburn Counties, WI

STINNETT



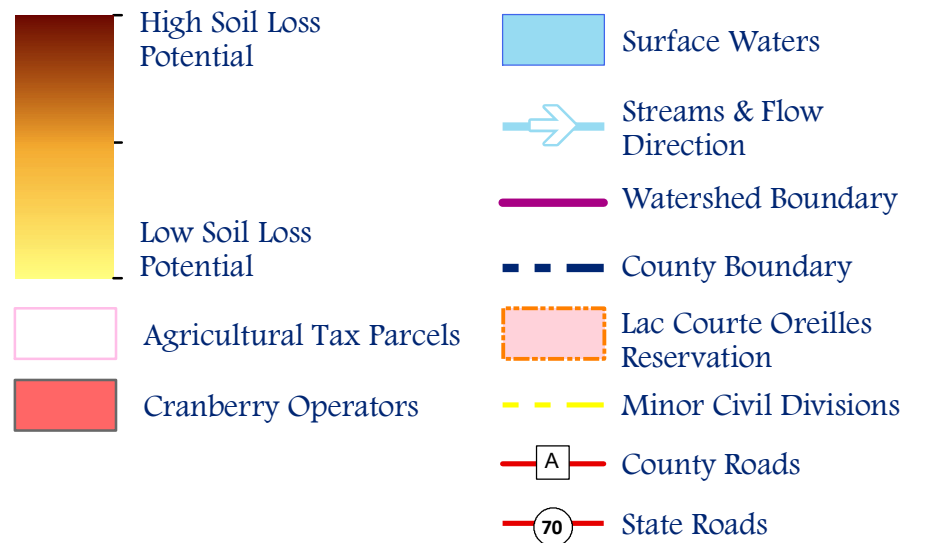
Data Sources

Soil loss potential due to sheet and rill erosion calculated using data from:
1) elevation data (NRCS) to determine slope and slope length, 2) cropland data (USDA NASS modified by Tim Seidl, Sawyer County and Ron Spiering, NRCS) to determine generalized crop rotations. Soil loss is calculated using the equation:
 $\text{Soil Loss in Tons} = \text{rainfall erosivity} * \text{soil K factor} * \text{slope/slope length} * \text{land cover C factor} * \text{land management practice factor}$ (assumed to be 1 in this analysis).

Tax parcels from the Sawyer County Land Records Department, acquired June 2016. Agricultural Tax Parcels selected by tax assessment attributes indicating agricultural land use. Agricultural land uses on parcels with tax exempt status are not included.

Map crafted by Kyle McNair, edited by Douglas Miskowiak. Version 12-09-2016.

Soil Loss Potential from Sheet and Rill Erosion



Project Education and Assistance



Project Cooperators

