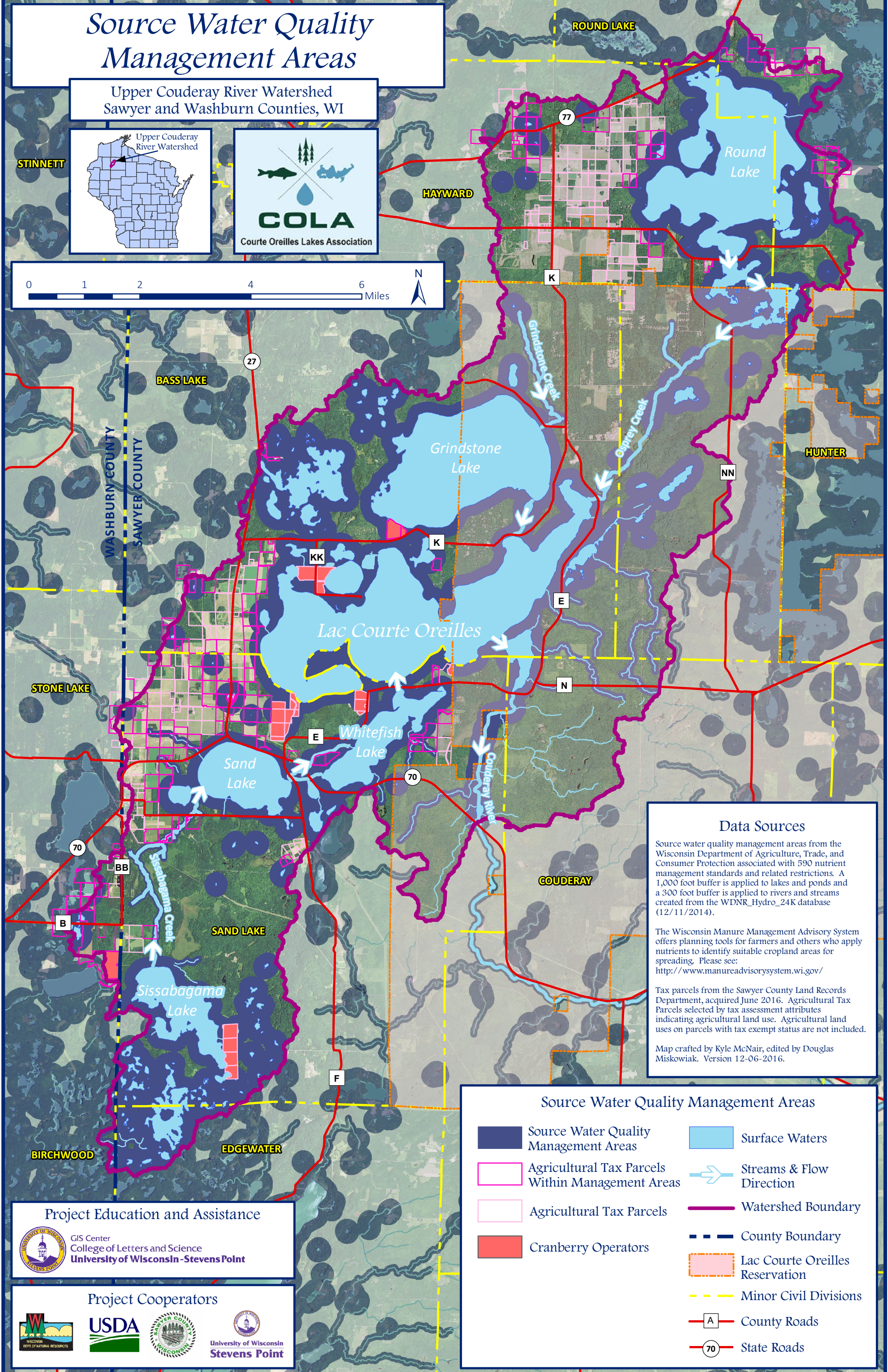
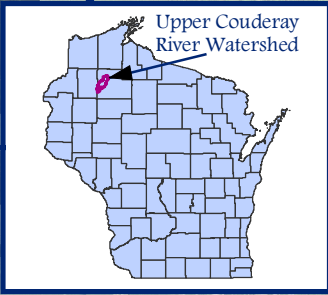


# Source Water Quality Management Areas

Upper Couderay River Watershed  
Sawyer and Washburn Counties, WI

STINNETT



## Data Sources

Source water quality management areas from the Wisconsin Department of Agriculture, Trade, and Consumer Protection associated with 590 nutrient management standards and related restrictions. A 1,000 foot buffer is applied to lakes and ponds and a 300 foot buffer is applied to rivers and streams created from the WDNH\_Hydro\_24K database (12/11/2014).

The Wisconsin Manure Management Advisory System offers planning tools for farmers and others who apply nutrients to identify suitable cropland areas for spreading. Please see: <http://www.manureadvisorysystem.wi.gov/>

Tax parcels from the Sawyer County Land Records Department, acquired June 2016. Agricultural Tax Parcels selected by tax assessment attributes indicating agricultural land use. Agricultural land uses on parcels with tax exempt status are not included.

Map crafted by Kyle McNair, edited by Douglas Miskowiak. Version 12-06-2016.

## Source Water Quality Management Areas

- Source Water Quality Management Areas
- Agricultural Tax Parcels Within Management Areas
- Agricultural Tax Parcels
- Cranberry Operators
- Surface Waters
- Streams & Flow Direction
- Watershed Boundary
- County Boundary
- Lac Courte Oreilles Reservation
- Minor Civil Divisions
- County Roads
- State Roads

## Project Education and Assistance



## Project Cooperators

