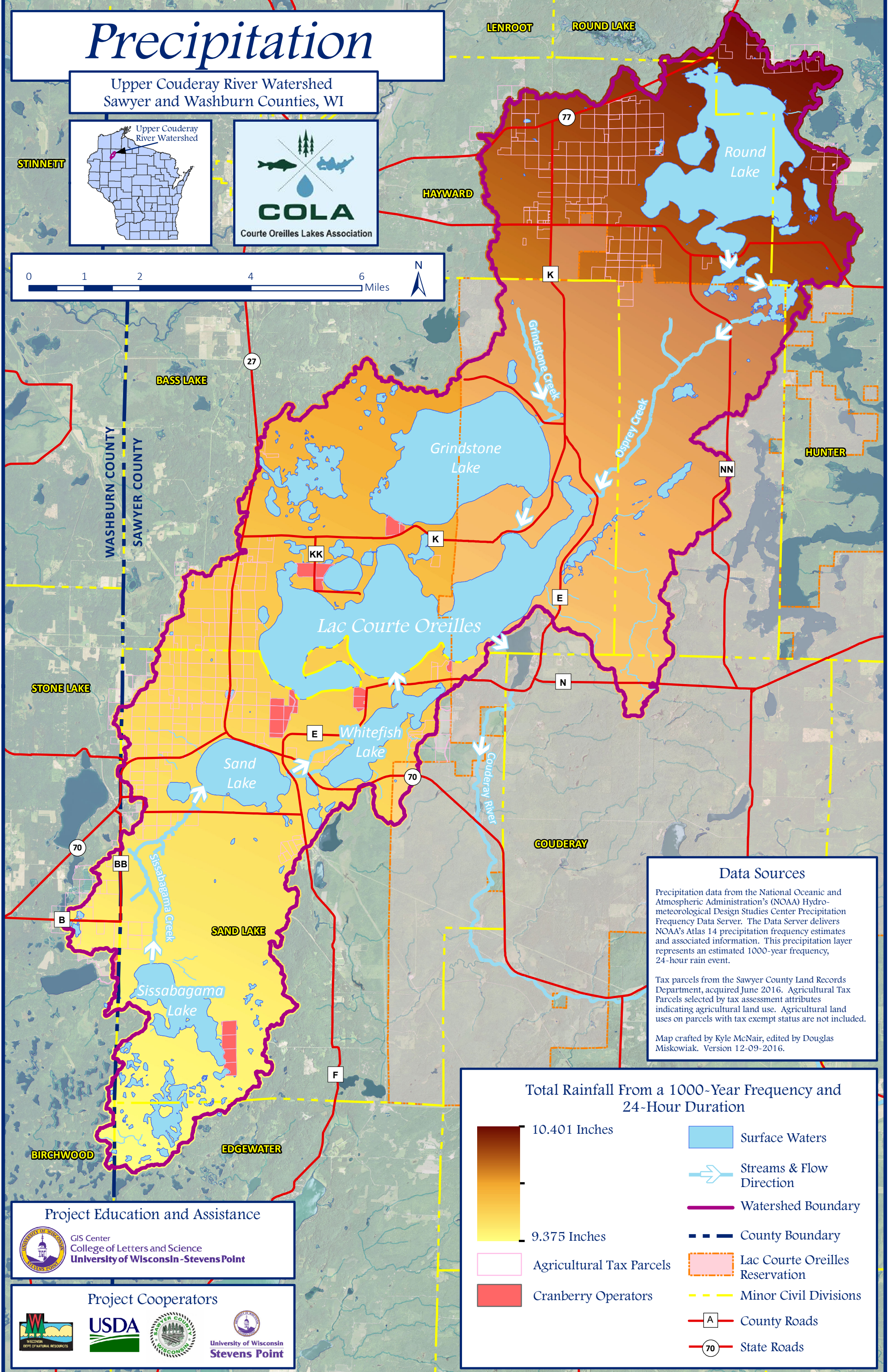
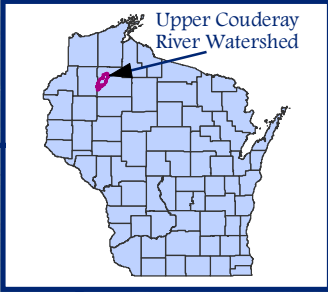


Precipitation

Upper Couderay River Watershed
Sawyer and Washburn Counties, WI

STINNETT



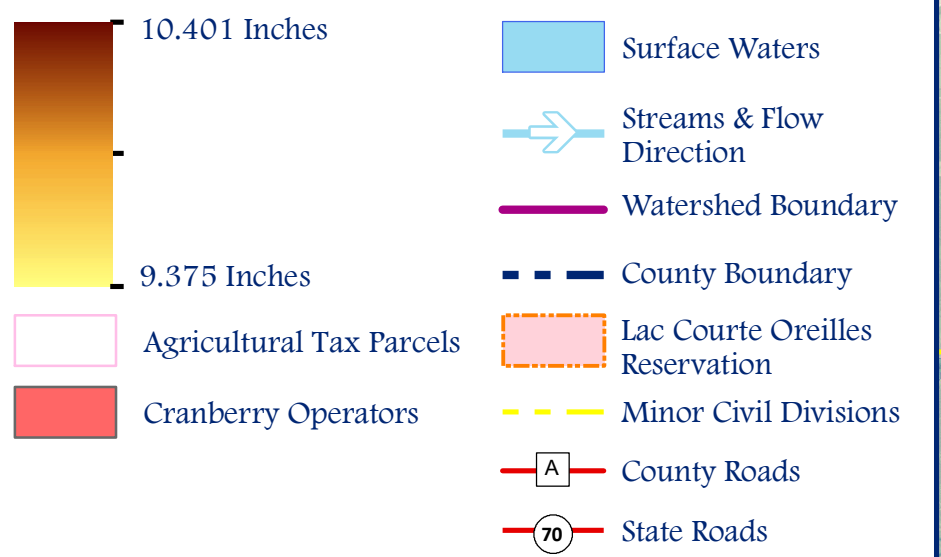
Data Sources

Precipitation data from the National Oceanic and Atmospheric Administration's (NOAA) Hydro-meteorological Design Studies Center Precipitation Frequency Data Server. The Data Server delivers NOAA's Atlas 14 precipitation frequency estimates and associated information. This precipitation layer represents an estimated 1000-year frequency, 24-hour rain event.

Tax parcels from the Sawyer County Land Records Department, acquired June 2016. Agricultural Tax Parcels selected by tax assessment attributes indicating agricultural land use. Agricultural land uses on parcels with tax exempt status are not included.

Map crafted by Kyle McNair, edited by Douglas Miskowiak. Version 12-09-2016.

Total Rainfall From a 1000-Year Frequency and 24-Hour Duration



Project Education and Assistance

GIS Center
College of Letters and Science
University of Wisconsin - Stevens Point

Project Cooperators