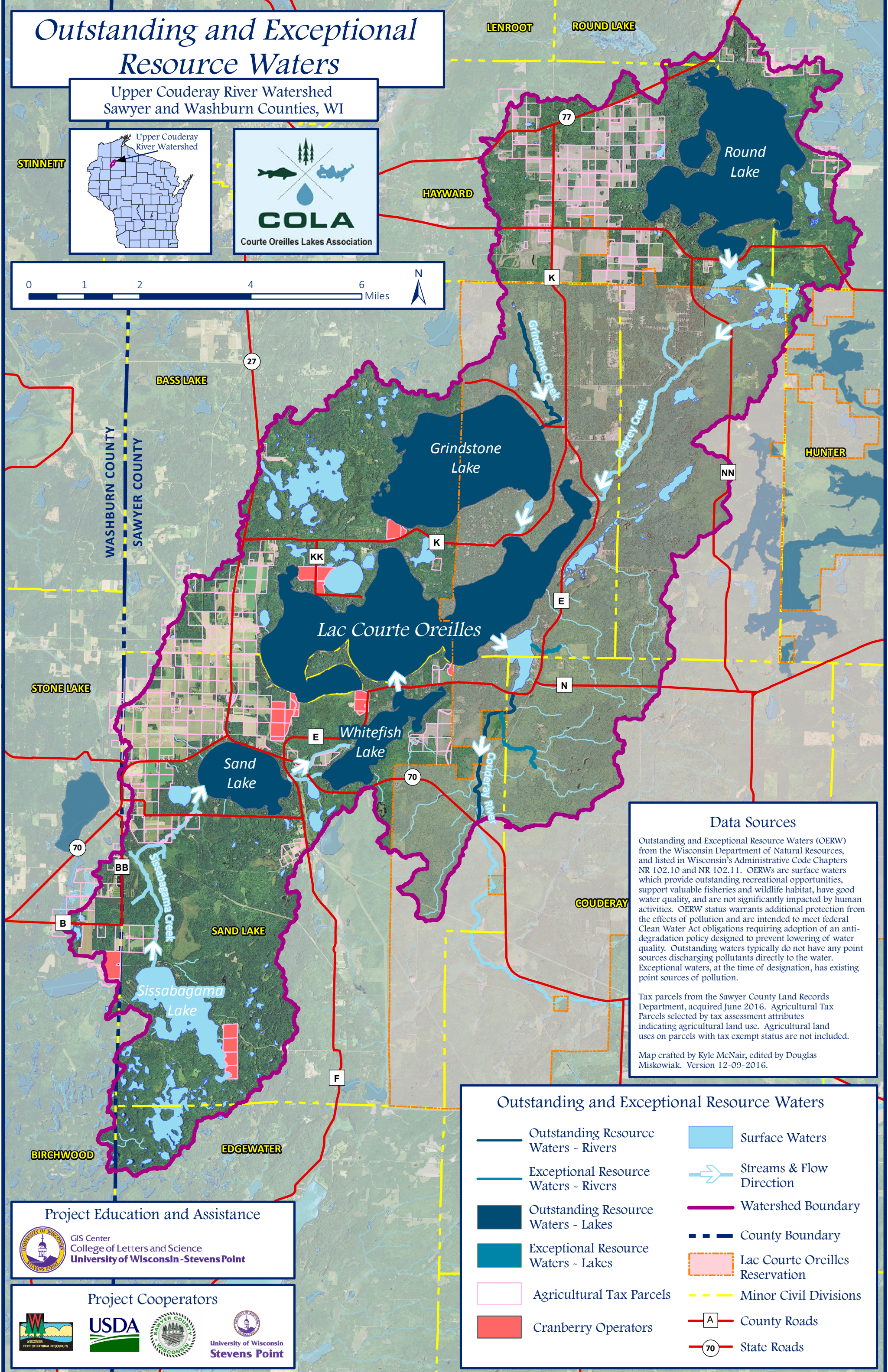
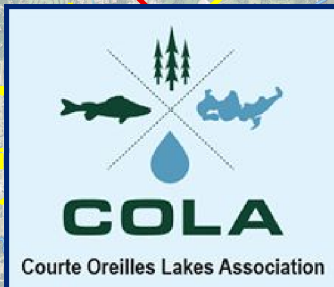
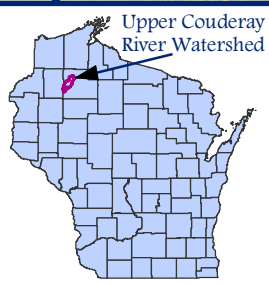


# Outstanding and Exceptional Resource Waters

Upper Couderay River Watershed  
Sawyer and Washburn Counties, WI

STINETT



## Data Sources

Outstanding and Exceptional Resource Waters (OERW) from the Wisconsin Department of Natural Resources, and listed in Wisconsin's Administrative Code Chapters NR 102.10 and NR 102.11. OERWs are surface waters which provide outstanding recreational opportunities, support valuable fisheries and wildlife habitat, have good water quality, and are not significantly impacted by human activities. OERW status warrants additional protection from the effects of pollution and are intended to meet federal Clean Water Act obligations requiring adoption of an anti-degradation policy designed to prevent lowering of water quality. Outstanding waters typically do not have any point sources discharging pollutants directly to the water. Exceptional waters, at the time of designation, has existing point sources of pollution.

Tax parcels from the Sawyer County Land Records Department, acquired June 2016. Agricultural Tax Parcels selected by tax assessment attributes indicating agricultural land use. Agricultural land uses on parcels with tax exempt status are not included.

Map crafted by Kyle McNair, edited by Douglas Miskowiak. Version 12-09-2016.

## Outstanding and Exceptional Resource Waters

- Outstanding Resource Waters - Rivers
- Exceptional Resource Waters - Rivers
- Outstanding Resource Waters - Lakes
- Exceptional Resource Waters - Lakes
- Agricultural Tax Parcels
- Cranberry Operators
- Surface Waters
- Streams & Flow Direction
- Watershed Boundary
- County Boundary
- Lac Courte Oreilles Reservation
- Minor Civil Divisions
- County Roads
- State Roads

## Project Education and Assistance



## Project Cooperators

