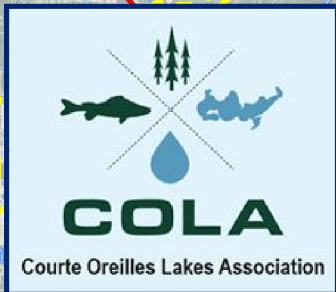
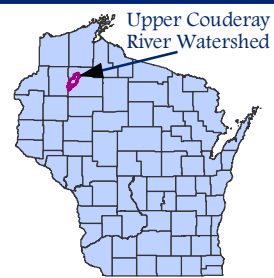


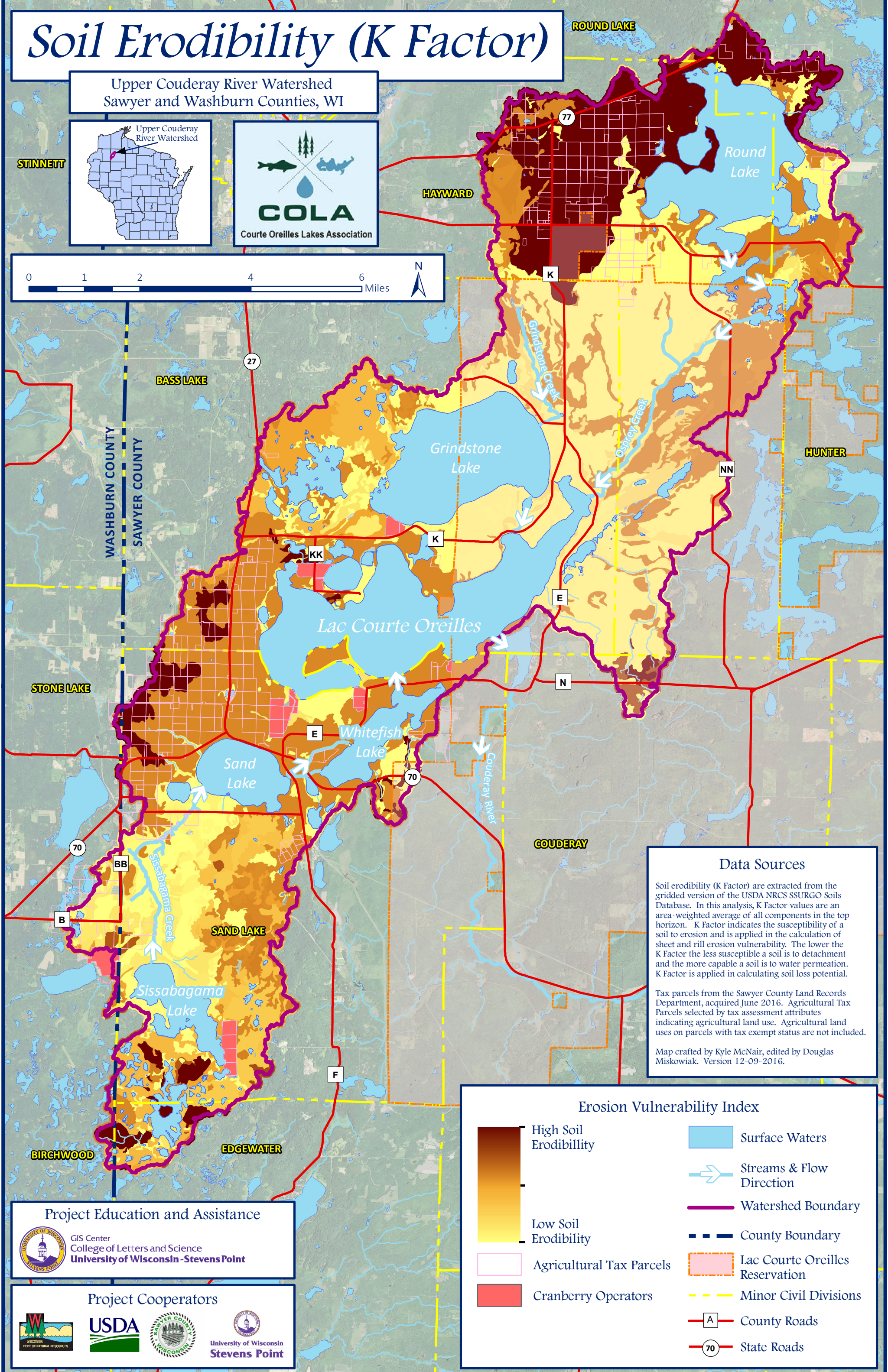
# Soil Erodibility (K Factor)

Upper Couderay River Watershed  
Sawyer and Washburn Counties, WI



STINNETT

HAYWARD



## Data Sources

Soil erodibility (K Factor) are extracted from the gridded version of the USDA NRCS SSURGO Soils Database. In this analysis, K Factor values are an area-weighted average of all components in the top horizon. K Factor indicates the susceptibility of a soil to erosion and is applied in the calculation of sheet and rill erosion vulnerability. The lower the K Factor the less susceptible a soil is to detachment and the more capable a soil is to water permeation. K Factor is applied in calculating soil loss potential.

Tax parcels from the Sawyer County Land Records Department, acquired June 2016. Agricultural Tax Parcels selected by tax assessment attributes indicating agricultural land use. Agricultural land uses on parcels with tax exempt status are not included.

Map crafted by Kyle McNair, edited by Douglas Miskowiak. Version 12-09-2016.

## Erosion Vulnerability Index

- High Soil Erodibility
- Low Soil Erodibility
- Agricultural Tax Parcels
- Cranberry Operators
- Surface Waters
- Streams & Flow Direction
- Watershed Boundary
- County Boundary
- Lac Courte Oreilles Reservation
- Minor Civil Divisions
- County Roads
- State Roads

## Project Education and Assistance



## Project Cooperators

