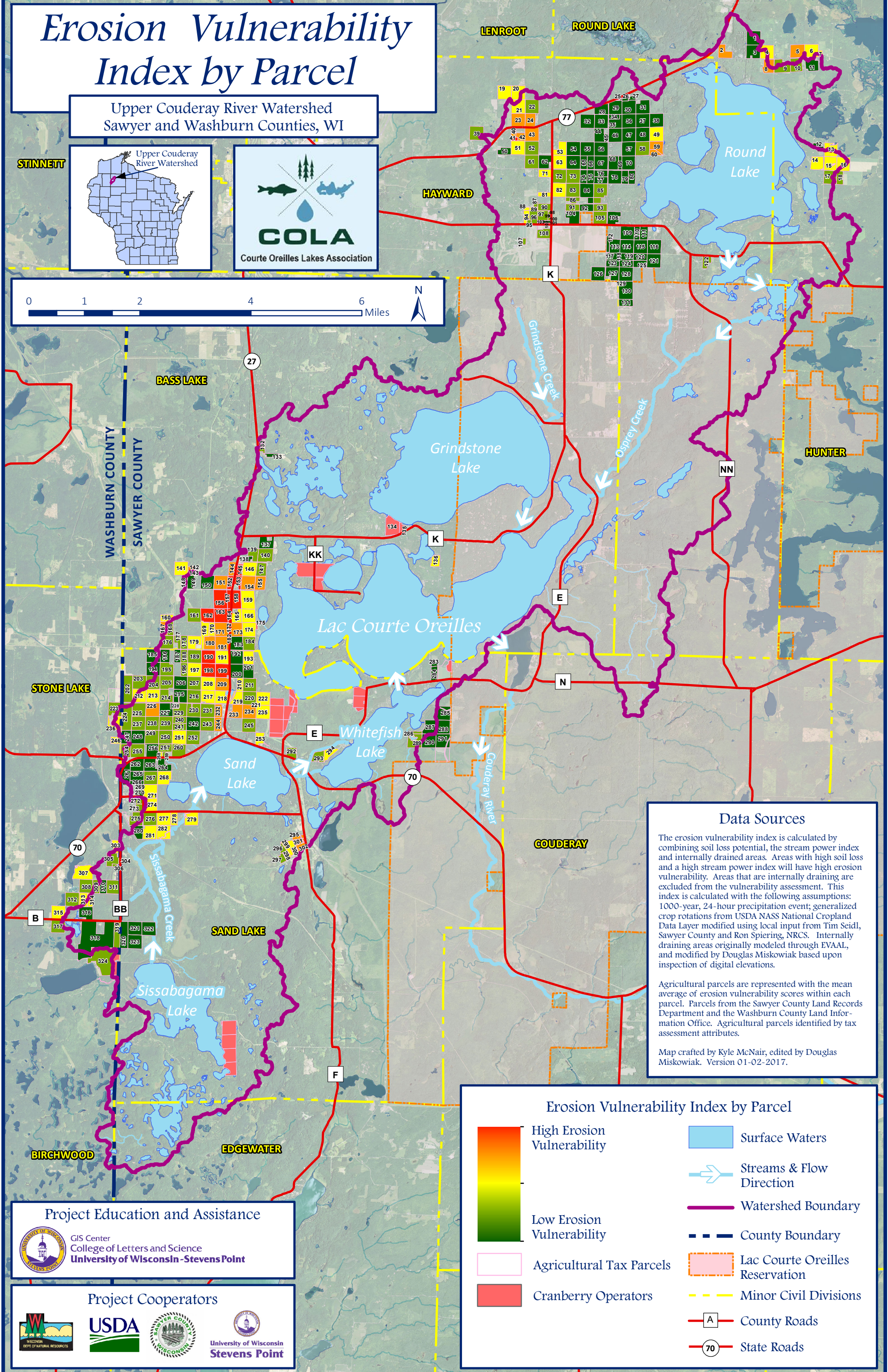
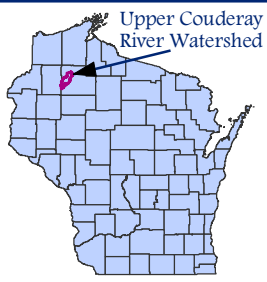


Erosion Vulnerability Index by Parcel

Upper Couderay River Watershed
Sawyer and Washburn Counties, WI

STINETT



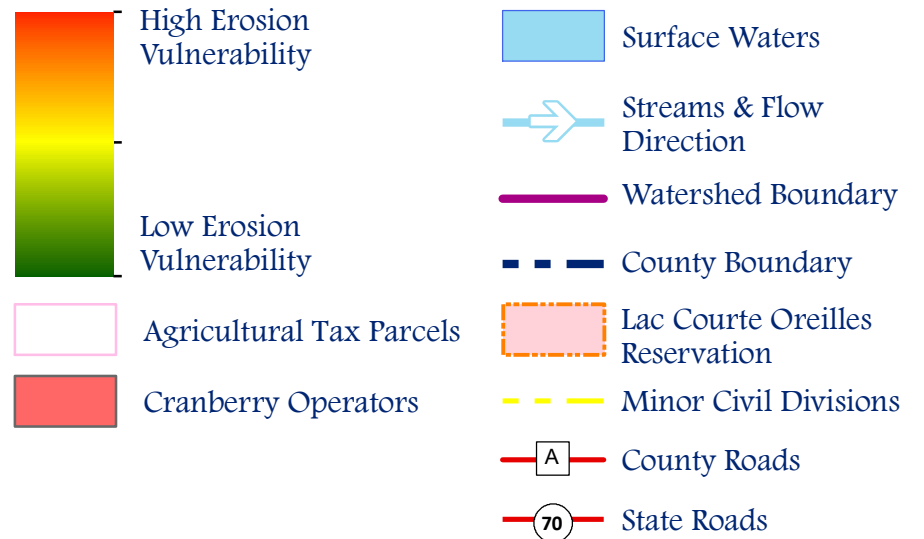
Data Sources

The erosion vulnerability index is calculated by combining soil loss potential, the stream power index and internally drained areas. Areas with high soil loss and a high stream power index will have high erosion vulnerability. Areas that are internally draining are excluded from the vulnerability assessment. This index is calculated with the following assumptions: 1000-year, 24-hour precipitation event; generalized crop rotations from USDA NASS National Cropland Data Layer modified using local input from Tim Seidl, Sawyer County and Ron Spiering, NRCS. Internally draining areas originally modeled through EVAAL, and modified by Douglas Miskowiak based upon inspection of digital elevations.

Agricultural parcels are represented with the mean average of erosion vulnerability scores within each parcel. Parcels from the Sawyer County Land Records Department and the Washburn County Land Information Office. Agricultural parcels identified by tax assessment attributes.

Map crafted by Kyle McNair, edited by Douglas Miskowiak. Version 01-02-2017.

Erosion Vulnerability Index by Parcel



Project Education and Assistance



Project Cooperators

