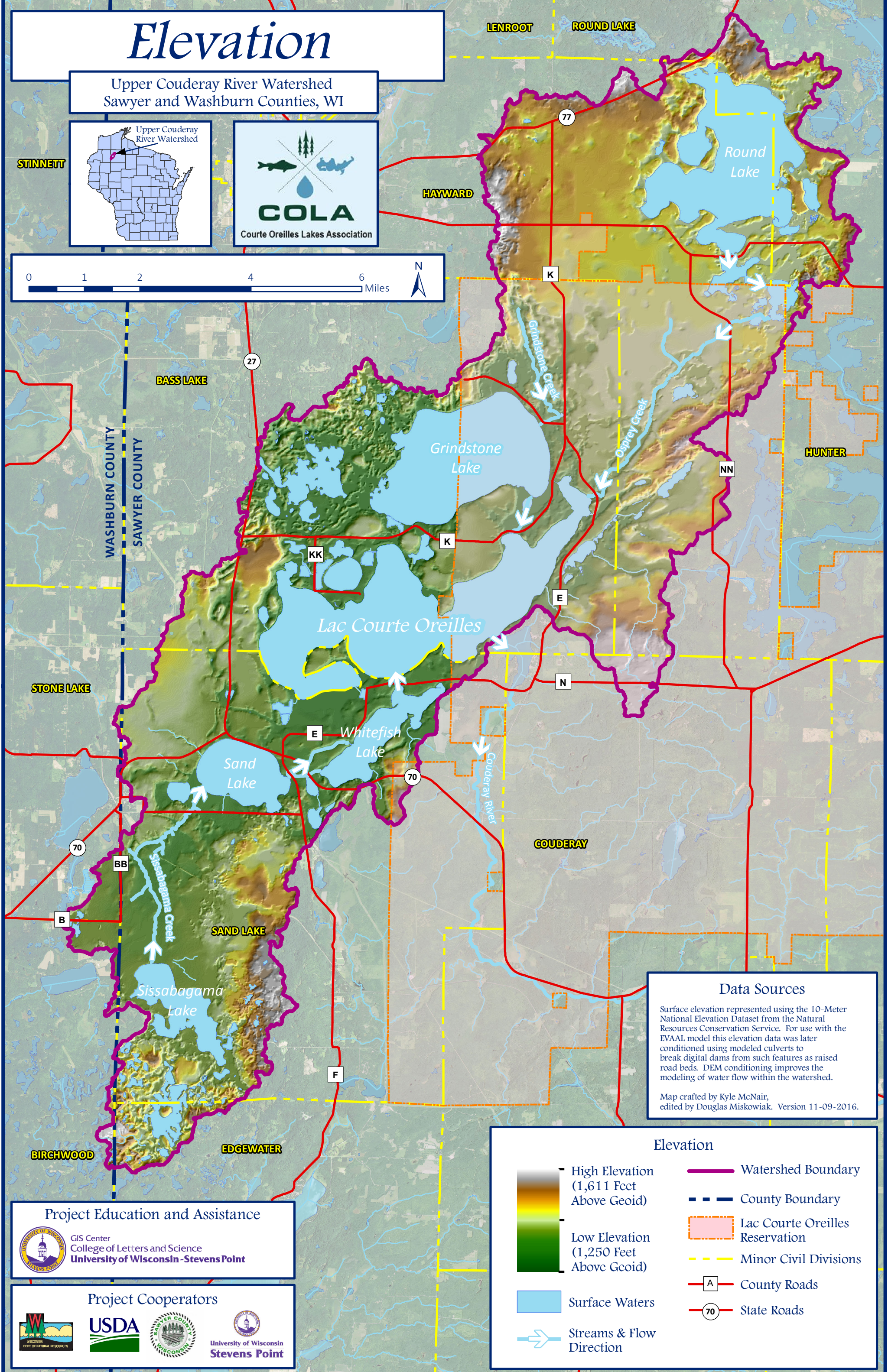
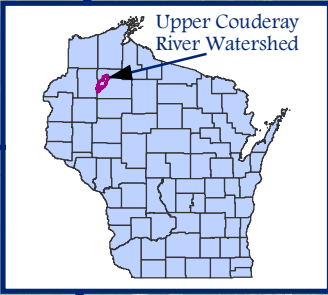


Elevation

Upper Couderay River Watershed
Sawyer and Washburn Counties, WI

STINNETT



Data Sources

Surface elevation represented using the 10-Meter National Elevation Dataset from the Natural Resources Conservation Service. For use with the EVAAL model this elevation data was later conditioned using modeled culverts to break digital dams from such features as raised road beds. DEM conditioning improves the modeling of water flow within the watershed.

Map crafted by Kyle McNair,
edited by Douglas Miskowiak. Version 11-09-2016.

Elevation

- High Elevation (1,611 Feet Above Geoid)
- Low Elevation (1,250 Feet Above Geoid)
- Surface Waters
- Streams & Flow Direction
- Watershed Boundary
- County Boundary
- Lac Courte Oreilles Reservation
- Minor Civil Divisions
- County Roads
- State Roads

Project Education and Assistance

GIS Center
College of Letters and Science
University of Wisconsin - Stevens Point

Project Cooperators

USDA
Sawyer County
University of Wisconsin Stevens Point