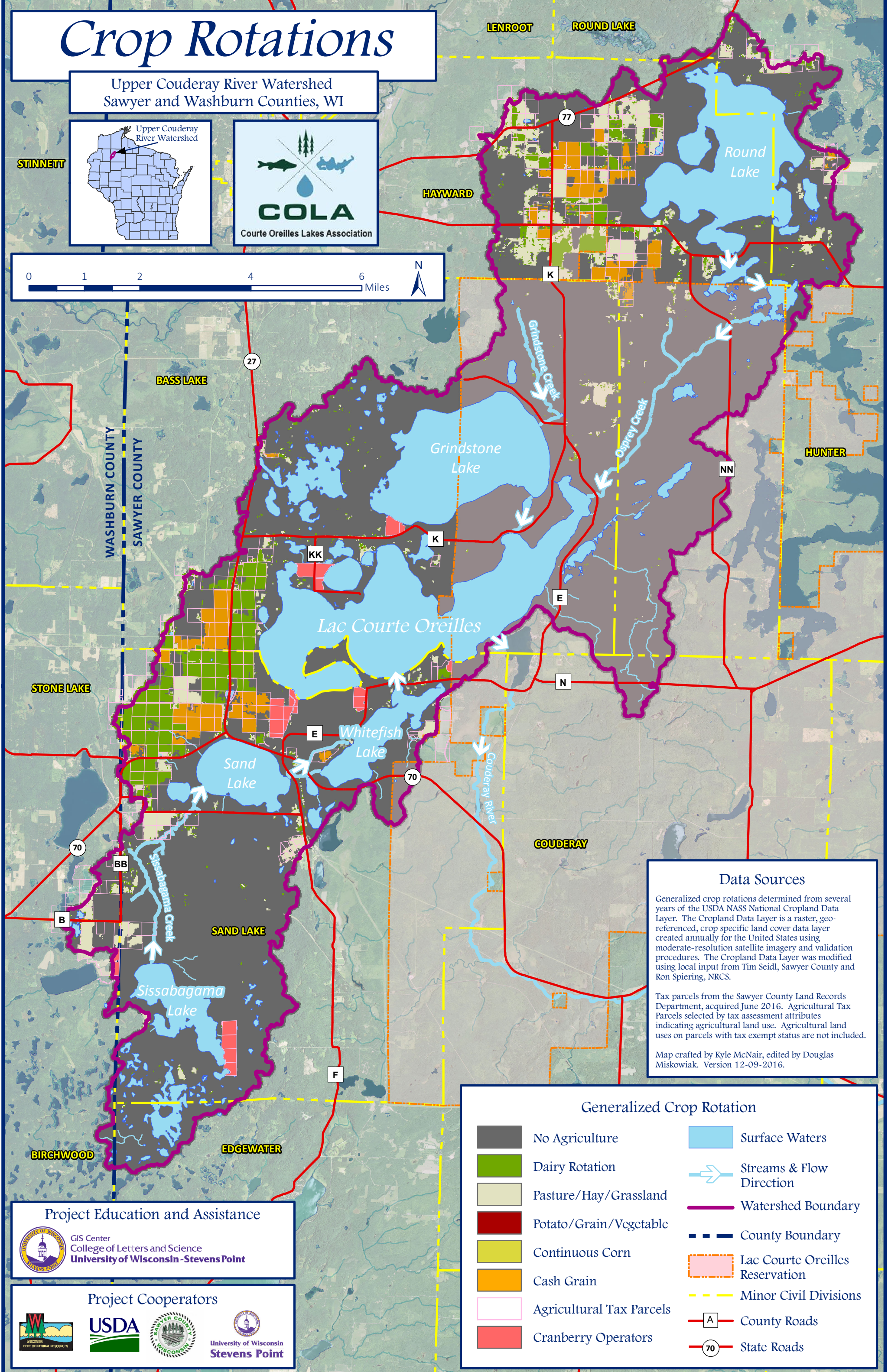
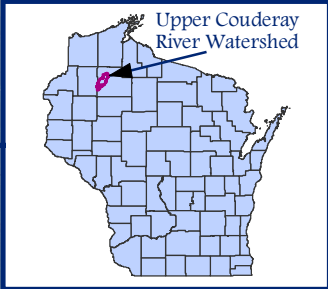


# Crop Rotations

Upper Couderay River Watershed  
Sawyer and Washburn Counties, WI

STINETT



**Data Sources**

Generalized crop rotations determined from several years of the USDA NASS National Cropland Data Layer. The Cropland Data Layer is a raster, geo-referenced, crop specific land cover data layer created annually for the United States using moderate-resolution satellite imagery and validation procedures. The Cropland Data Layer was modified using local input from Tim Seidl, Sawyer County and Ron Spiering, NRCS.

Tax parcels from the Sawyer County Land Records Department, acquired June 2016. Agricultural Tax Parcels selected by tax assessment attributes indicating agricultural land use. Agricultural land uses on parcels with tax exempt status are not included.

Map crafted by Kyle McNair, edited by Douglas Miskowiak. Version 12-09-2016.

**Generalized Crop Rotation**

No Agriculture	Surface Waters
Dairy Rotation	Streams & Flow Direction
Pasture/Hay/Grassland	Watershed Boundary
Potato/Grain/Vegetable	County Boundary
Continuous Corn	Lac Courte Oreilles Reservation
Cash Grain	Minor Civil Divisions
Agricultural Tax Parcels	County Roads
Cranberry Operators	State Roads

**Project Education and Assistance**

GIS Center  
College of Letters and Science  
University of Wisconsin - Stevens Point

**Project Cooperators**