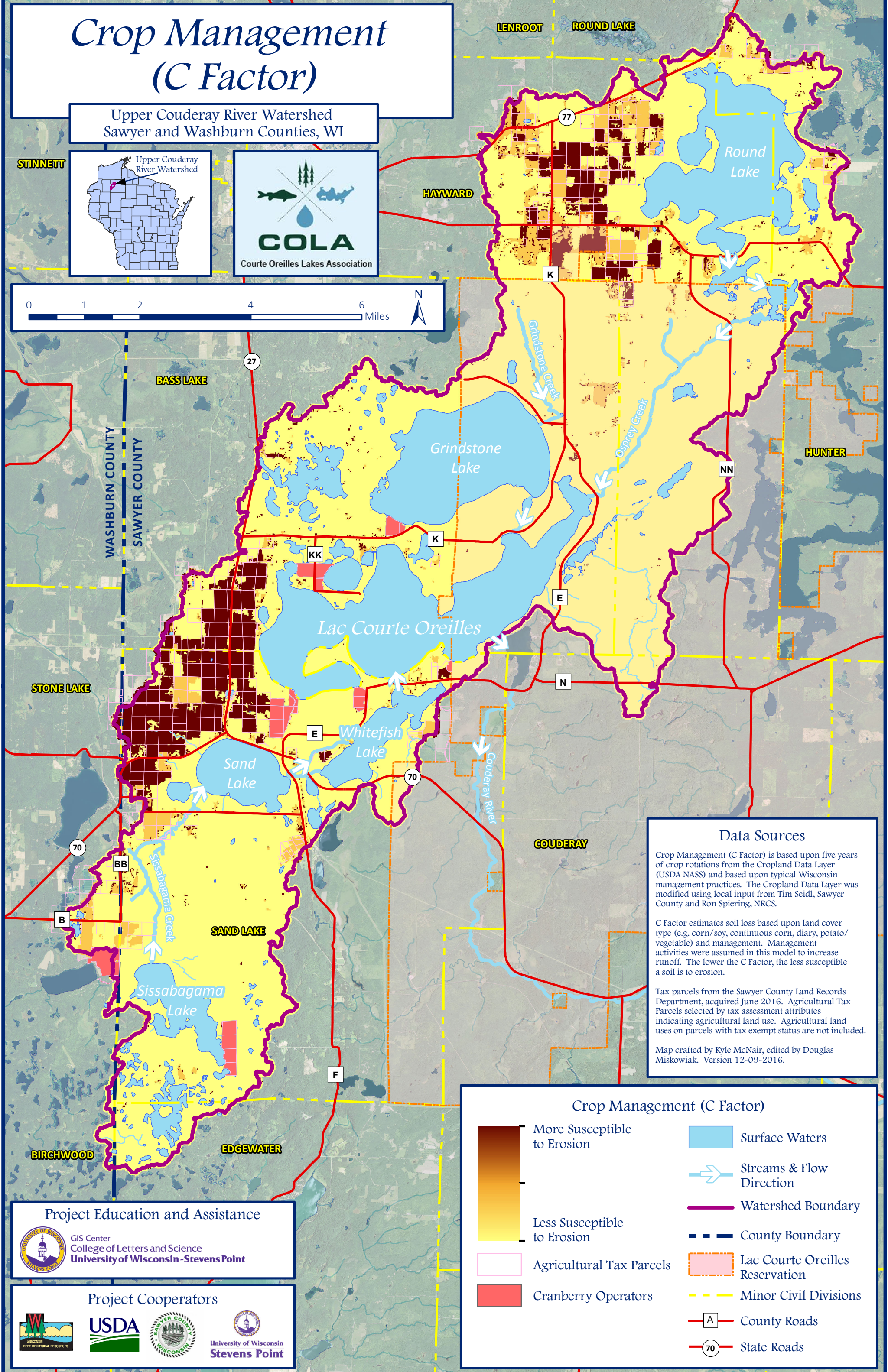
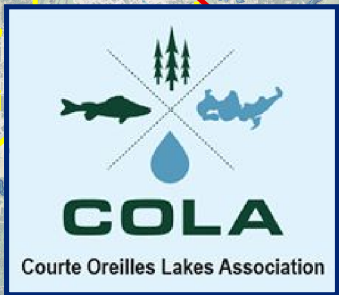
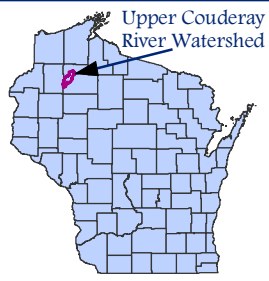


Crop Management (C Factor)

Upper Couderay River Watershed
Sawyer and Washburn Counties, WI

STINETT



Data Sources

Crop Management (C Factor) is based upon five years of crop rotations from the Cropland Data Layer (USDA NASS) and based upon typical Wisconsin management practices. The Cropland Data Layer was modified using local input from Tim Seidl, Sawyer County and Ron Spiering, NRCS.

C Factor estimates soil loss based upon land cover type (e.g. corn/soy, continuous corn, dairy, potato/vegetable) and management. Management activities were assumed in this model to increase runoff. The lower the C Factor, the less susceptible a soil is to erosion.

Tax parcels from the Sawyer County Land Records Department, acquired June 2016. Agricultural Tax Parcels selected by tax assessment attributes indicating agricultural land use. Agricultural land uses on parcels with tax exempt status are not included.

Map crafted by Kyle McNair, edited by Douglas Miskowiak. Version 12-09-2016.

Crop Management (C Factor)

- More Susceptible to Erosion
- Less Susceptible to Erosion
- Agricultural Tax Parcels
- Cranberry Operators
- Surface Waters
- Streams & Flow Direction
- Watershed Boundary
- County Boundary
- Lac Courte Oreilles Reservation
- Minor Civil Divisions
- County Roads
- State Roads

Project Education and Assistance

GIS Center
College of Letters and Science
University of Wisconsin - Stevens Point

Project Cooperators