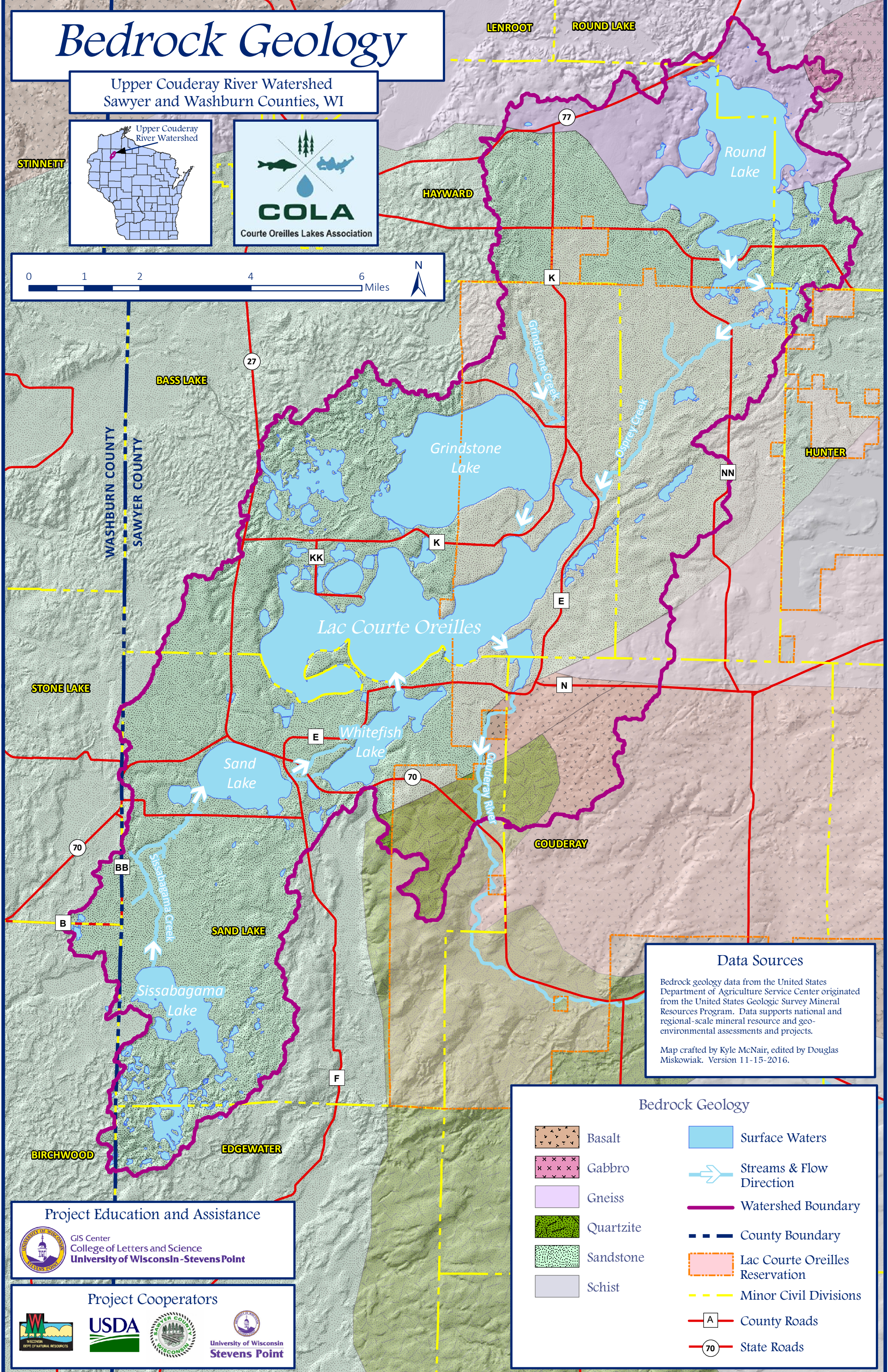
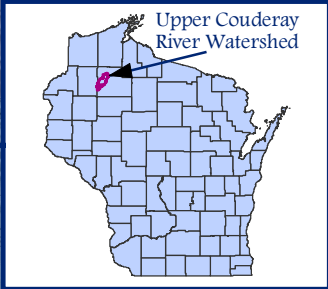


Bedrock Geology

Upper Couderay River Watershed
Sawyer and Washburn Counties, WI

STINNETT



Data Sources

Bedrock geology data from the United States Department of Agriculture Service Center originated from the United States Geologic Survey Mineral Resources Program. Data supports national and regional-scale mineral resource and geo-environmental assessments and projects.

Map crafted by Kyle McNair, edited by Douglas Miskowiak. Version 11-15-2016.

Bedrock Geology

	Basalt		Surface Waters
	Gabbro		Streams & Flow Direction
	Gneiss		Watershed Boundary
	Quartzite		County Boundary
	Sandstone		Lac Courte Oreilles Reservation
	Schist		Minor Civil Divisions
			County Roads
			State Roads

Project Education and Assistance

GIS Center
College of Letters and Science
University of Wisconsin - Stevens Point

Project Cooperators

USDA
Sawyer County
University of Wisconsin Stevens Point