

Wisconsin's lakes & rivers are getting salty

Linnea Rock

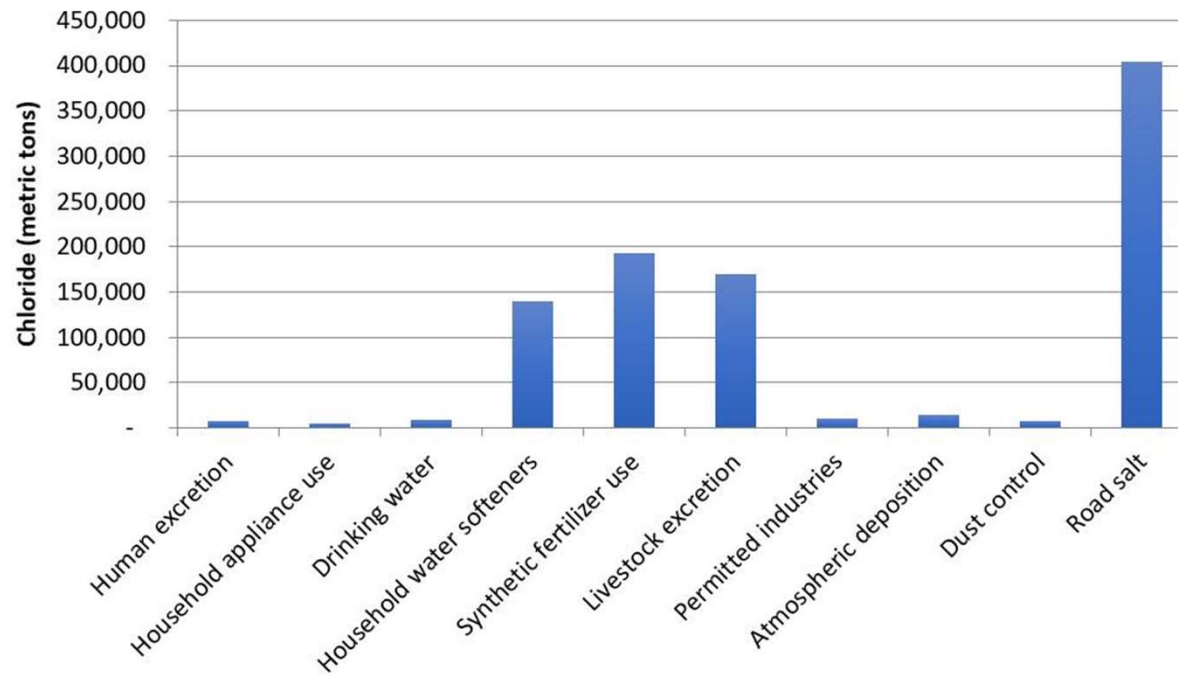


DEPARTMENT OF INTEGRATIVE BIOLOGY
College of Letters & Science



Center for Limnology
University of Wisconsin–Madison

MINNESOTA SALT USE



<https://www.wrc.umn.edu/chloride>

'You can taste it': Road salt making GTA rivers, streams as salty as seawater

MPRnews

Sections ▾ Members ▾ More ▾

Science

Salt from icy roads is contaminating North America's lakes

Experts seek ways to protect environment from rising road salt runoff

Think road salt won't reach your drinking water? Ask Madison

Road Salt Contamination In Lakes Widespread

Study Looks At 10 Northern States, Including Wisconsin

Minnesota waters deal with excess chloride from road salt

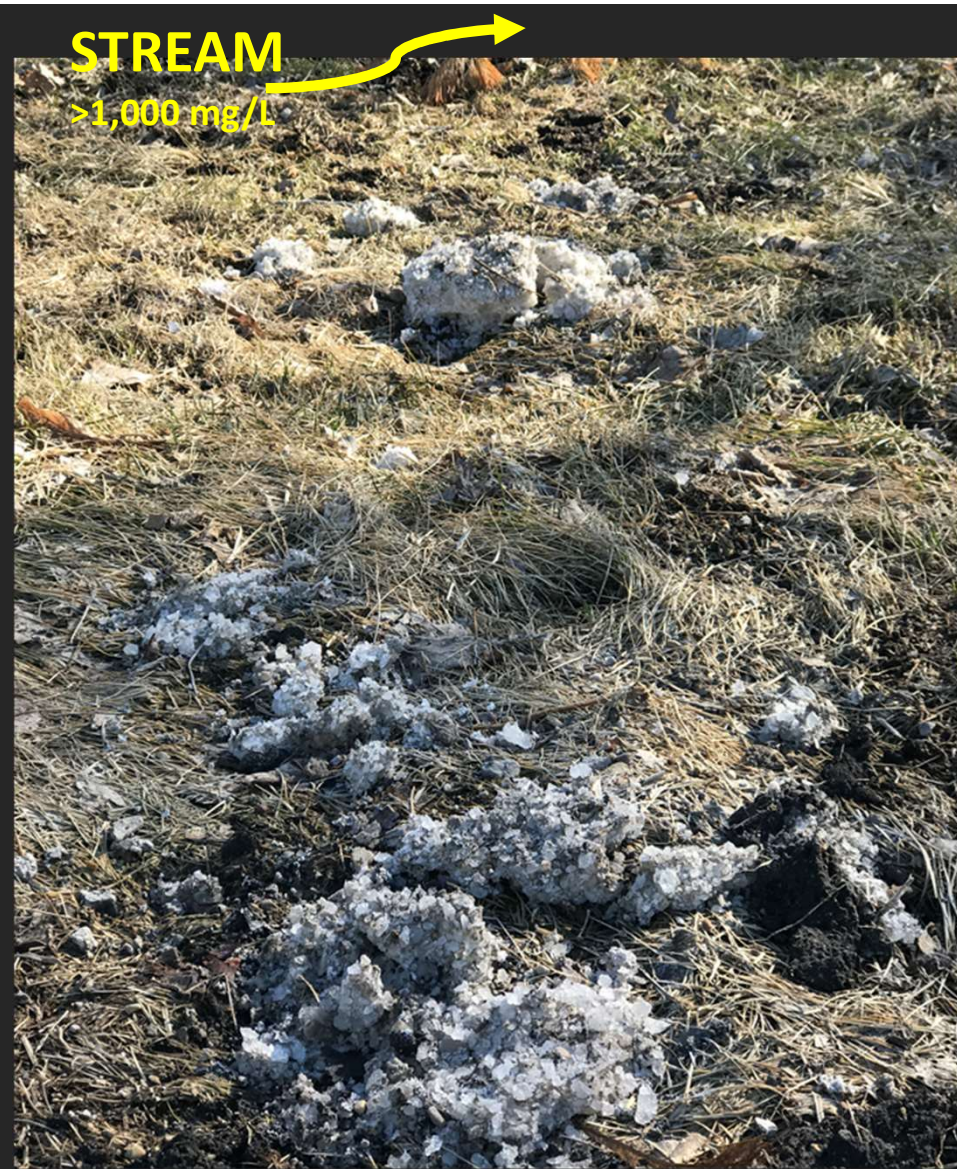
Road salt threatening health of freshwater lakes, study finds

Study of 371 North American lakes finds melting snow and runoff put ecosystems at risk

STATE + LOCAL

Rising salt levels threaten Twin Cities lakes by 2050

Chloride:
What's the
big deal?



1 teaspoon of road salt
in 5 gallons of
freshwater = 230 mg/L!

GUIDELINES

	CHRONIC	ACUTE
EPA	230 mg/L	860 mg/L
Wisconsin DNR	395 mg/L	757 mg/L
Taste	250 mg/L	

Road Salt Use

Pros

Effective

Cheap

Natural

Cons

Toxicity

Lake physics

Damage



Road Salt Pollution

January 8, 2020 By EarthWise 1 Comment

New research has revealed that road salt runoff into Mirror Lake is preventing natural water turnover which poses a risk to the balance of its ecology. The study, which was published in *Lake and Reservoir Management*, found that road salt runoff is preventing spring mixing of the water column. This creates more anoxic water conditions,

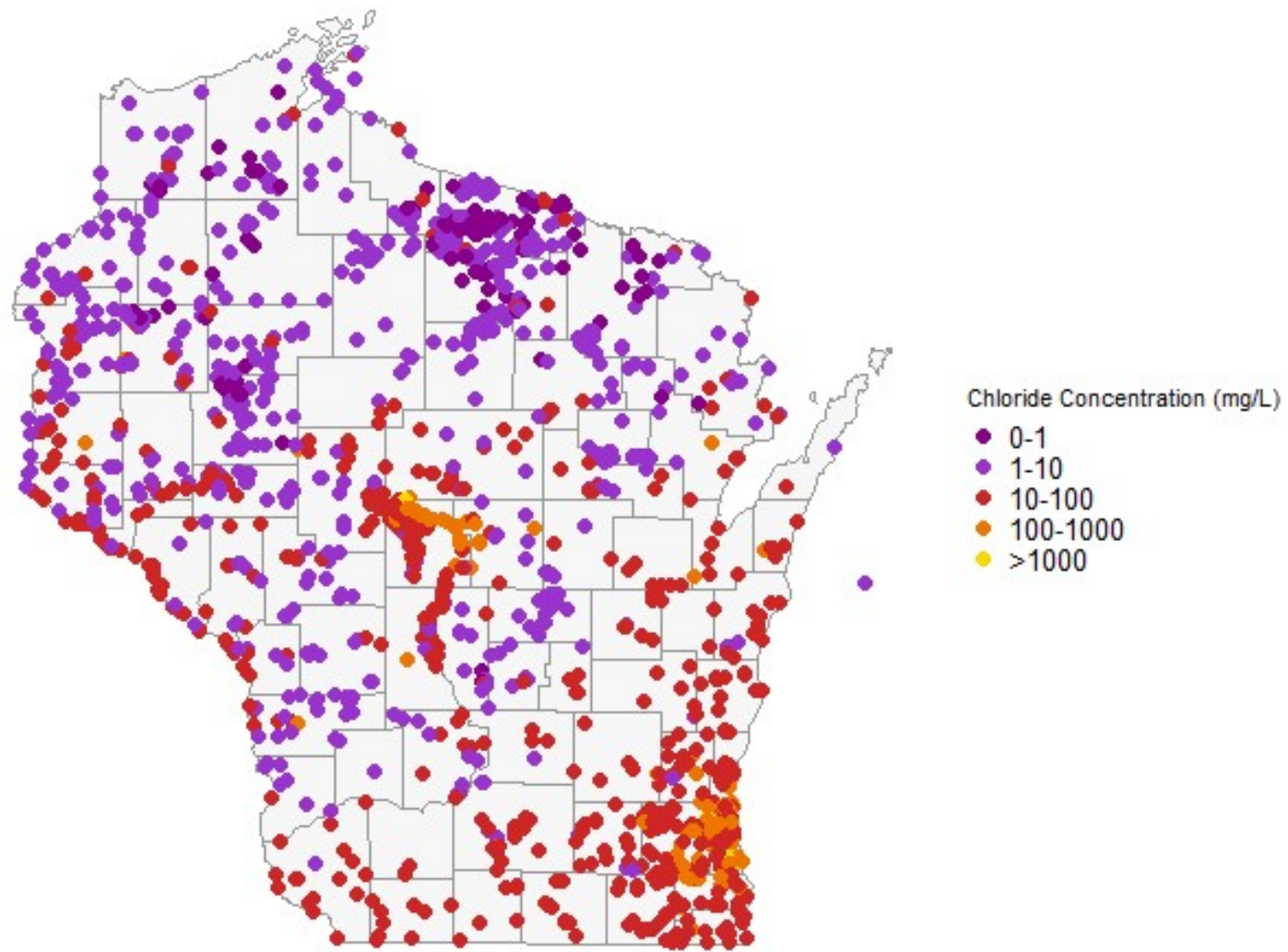
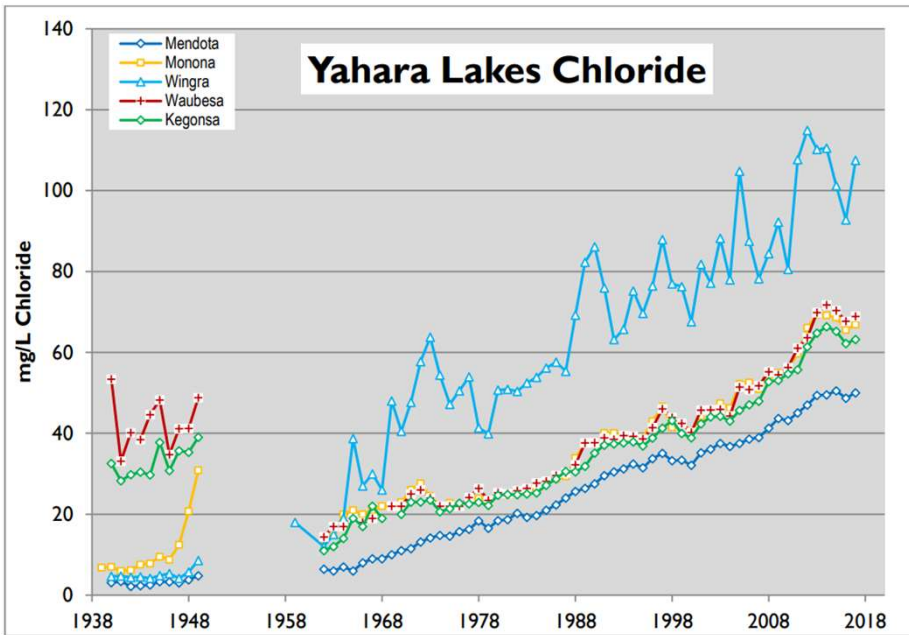


Figure by Linnea Rock using data from waterqualitydata.us



2017 Road Salt Report, Public Health Madison—Dane County

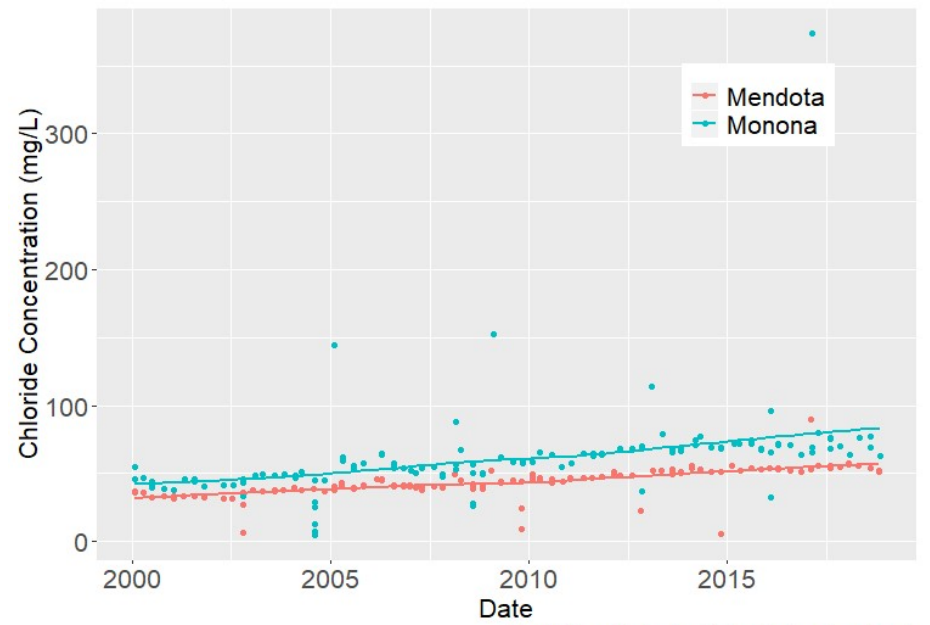
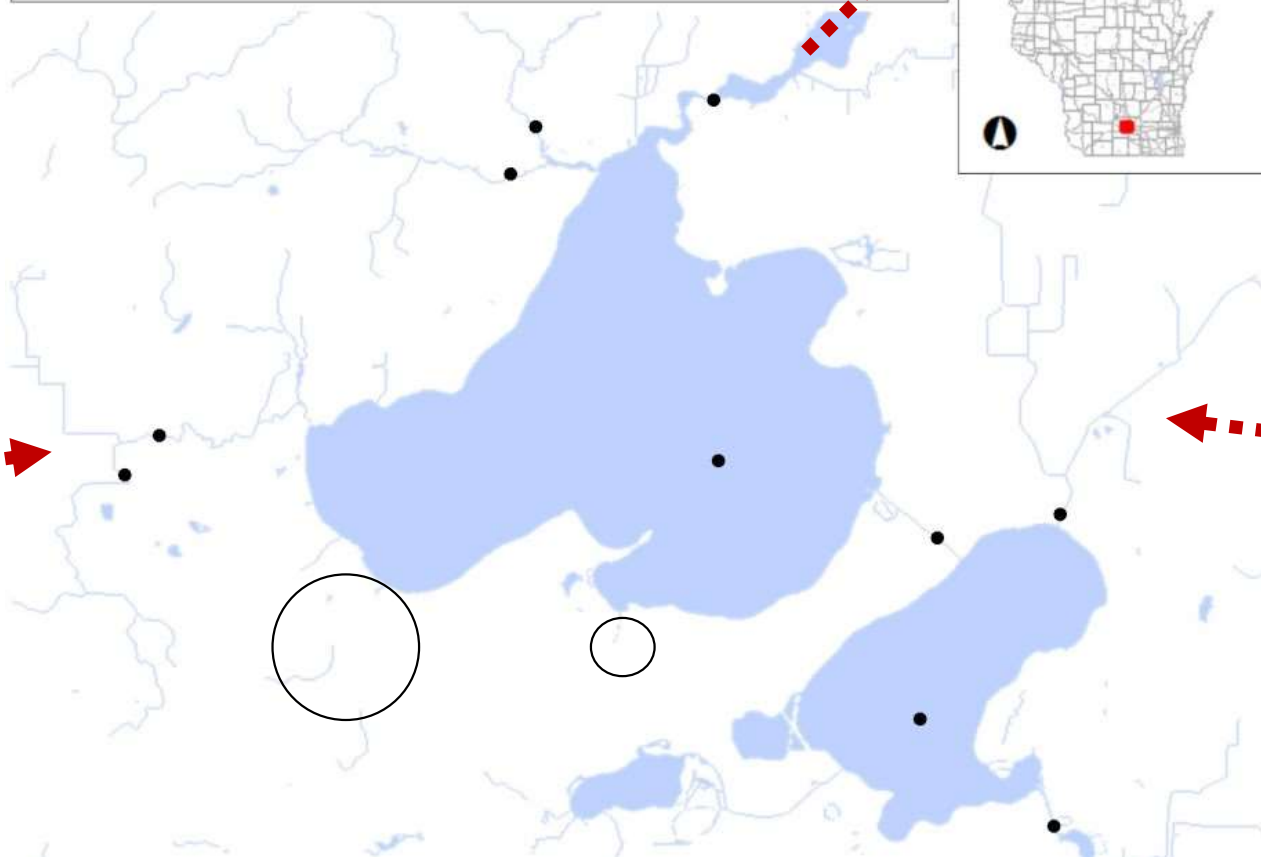


Figure by Linnea Rock using data from lter.limnology.wisc.edu



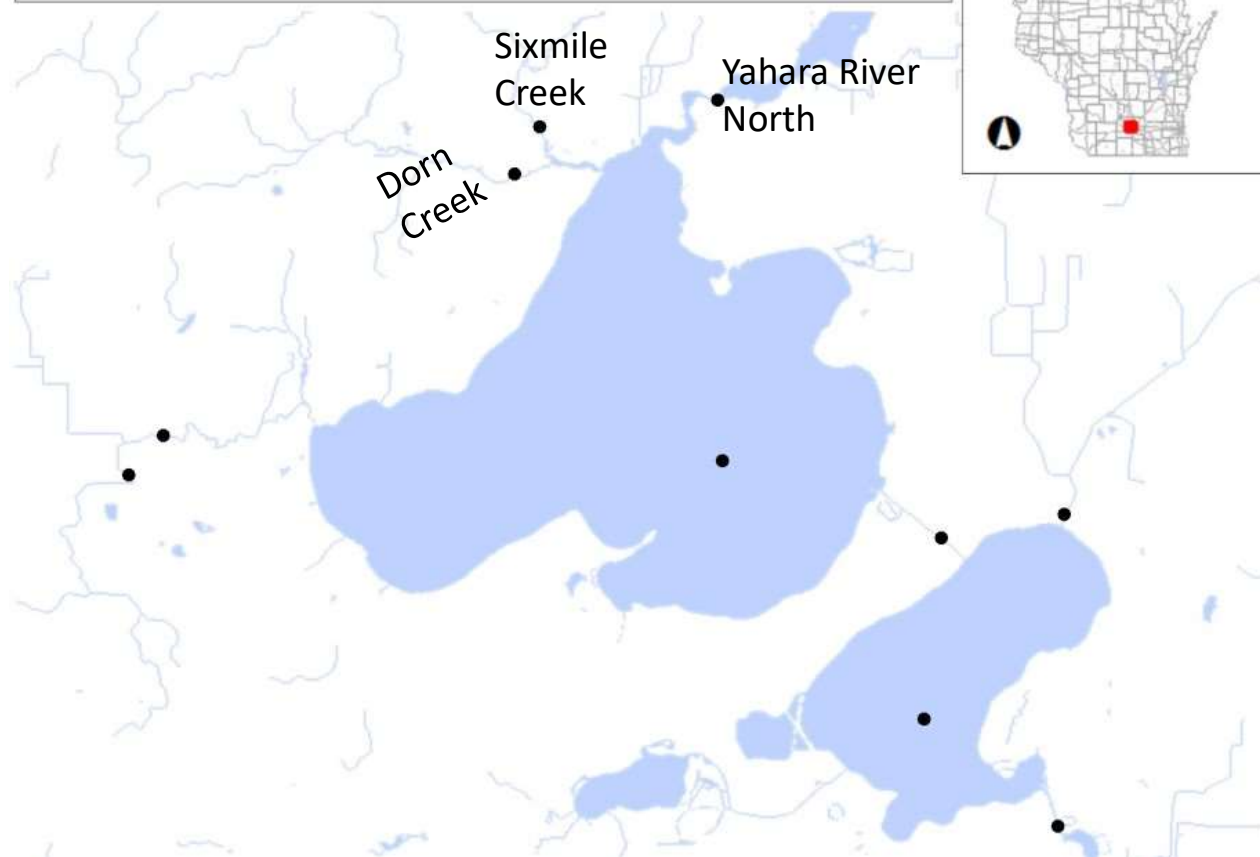
Surface Water Data Viewer Map



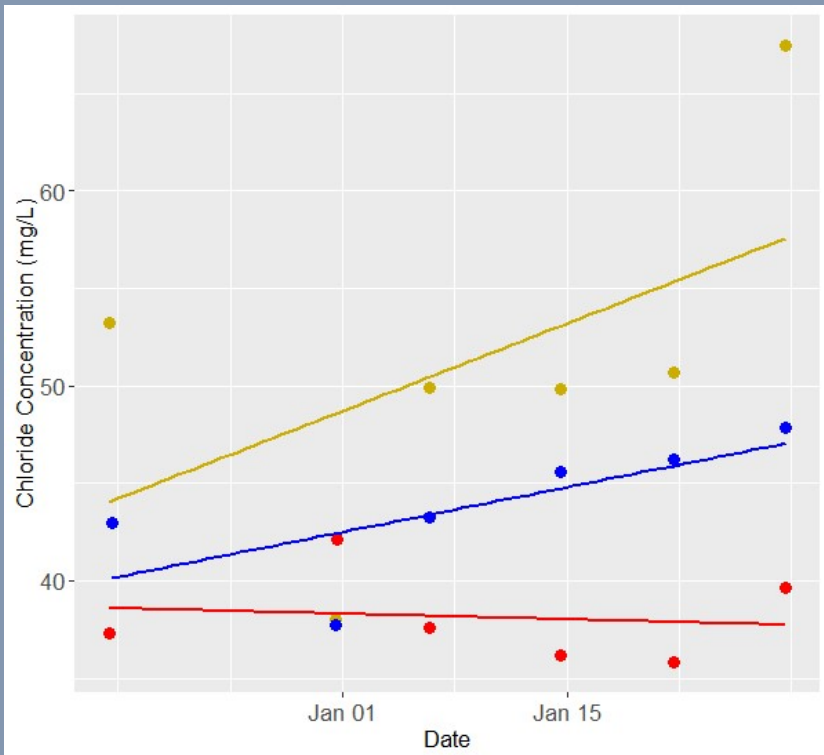
Study Area



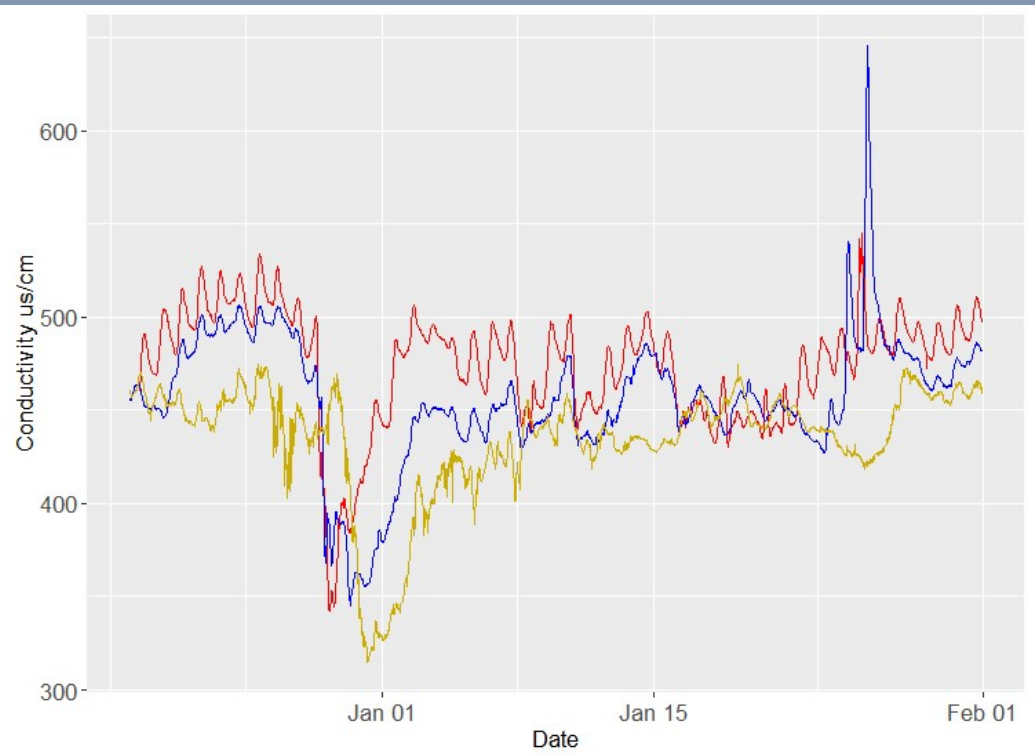
Surface Water Data Viewer Map



Trends for..

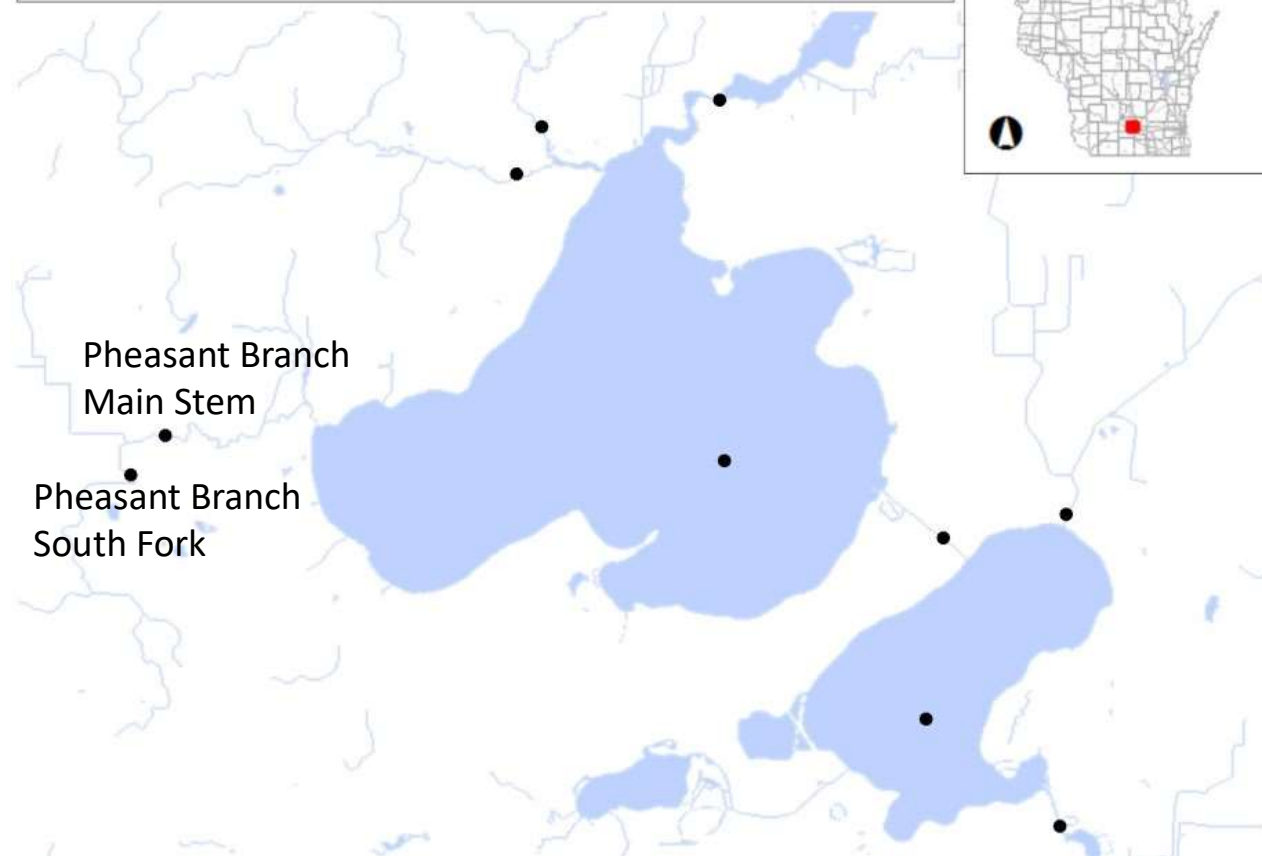


- Sixmile Creek
- Dorn Creek
- Yahara North

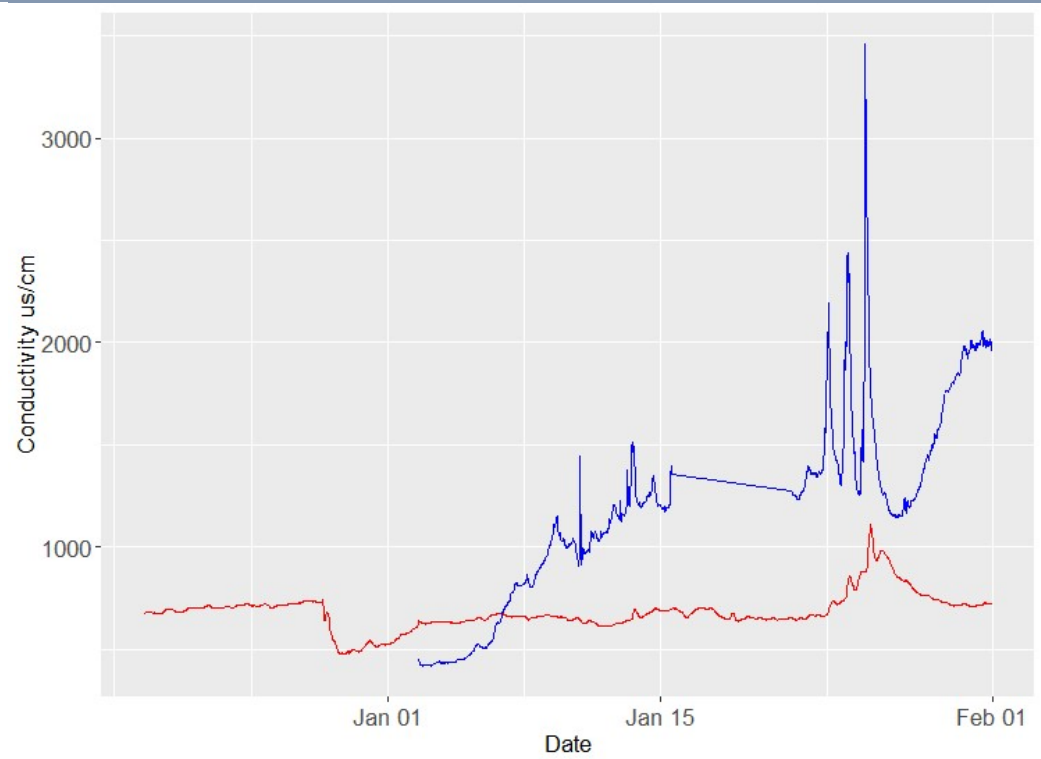
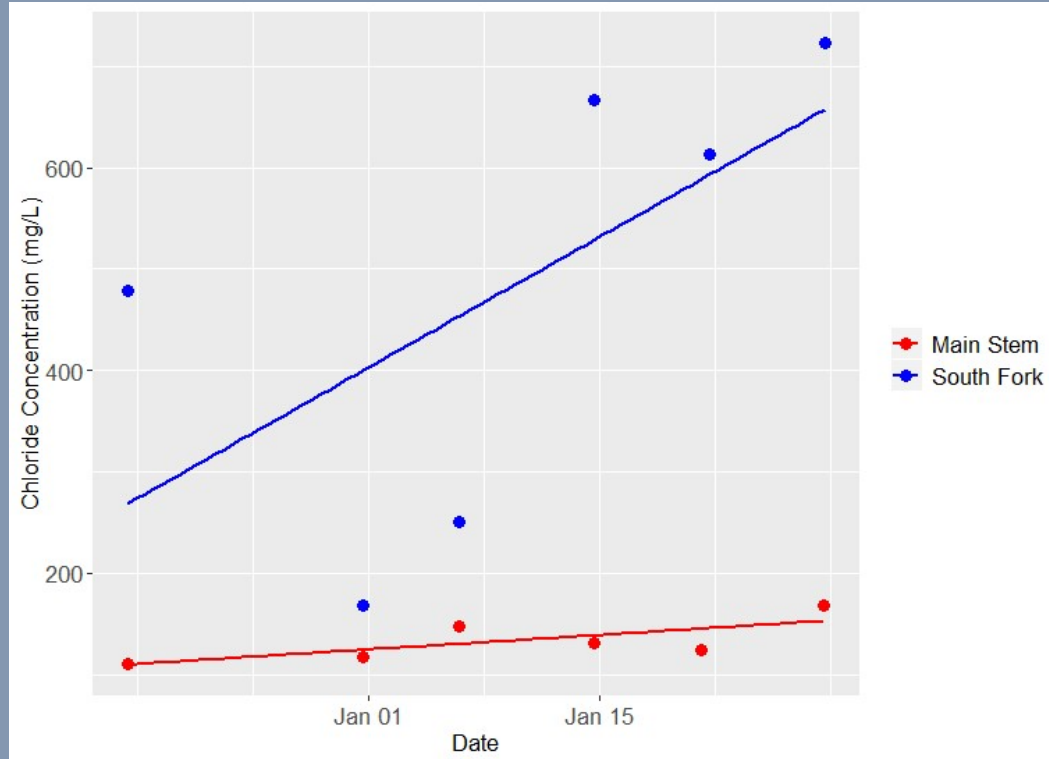




Surface Water Data Viewer Map



Trends for..

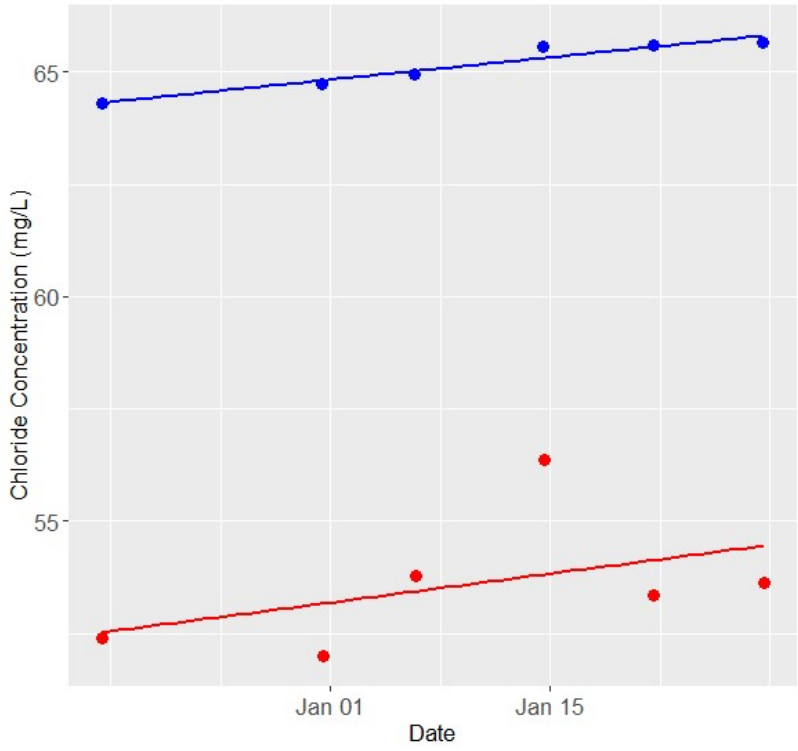




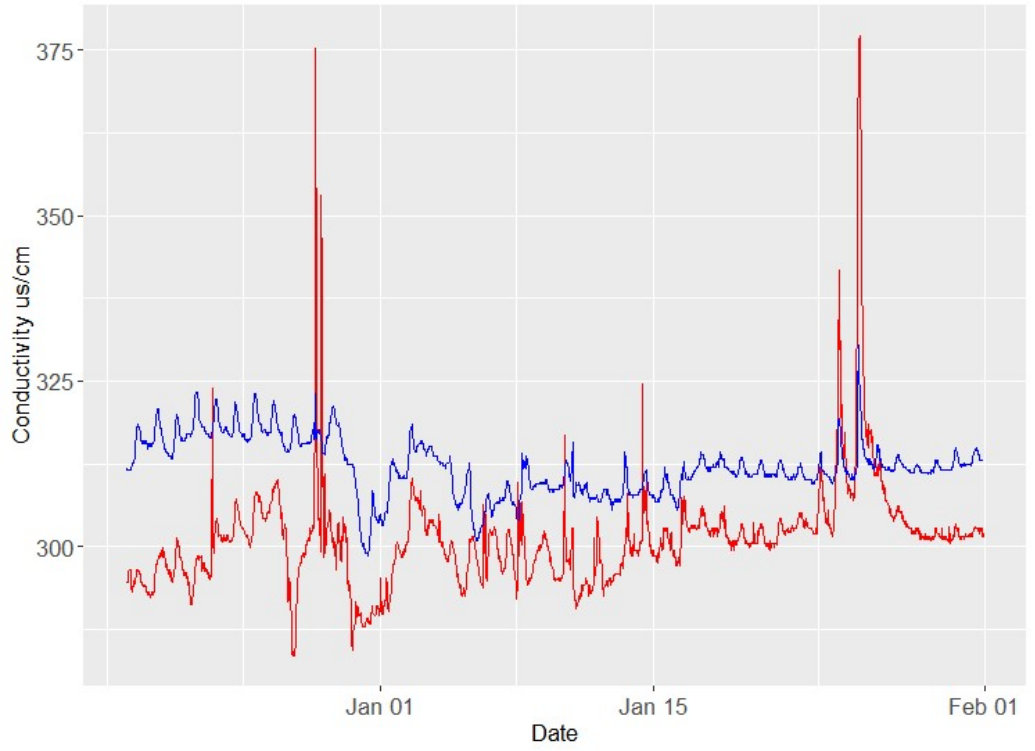
Surface Water Data Viewer Map



Trends for..

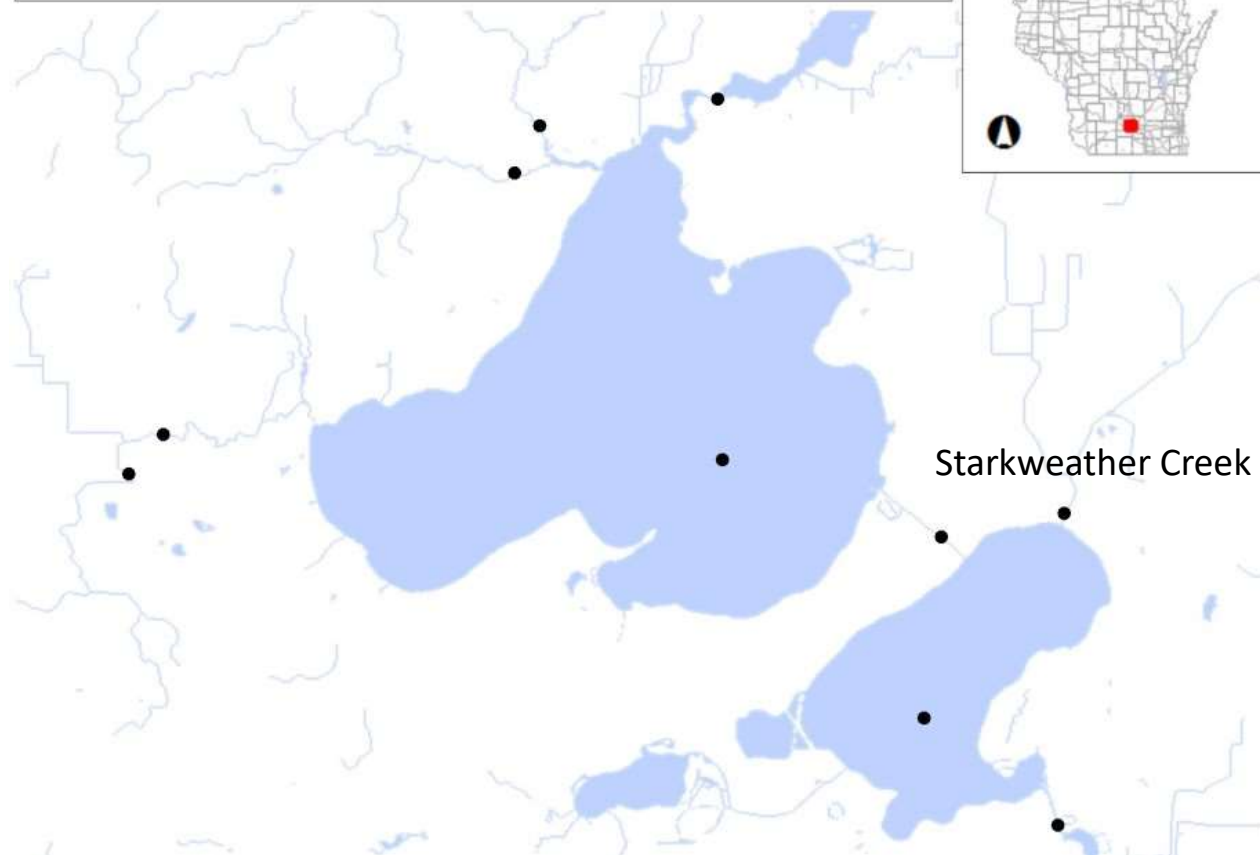


Yahara Isthmus
Yahara South

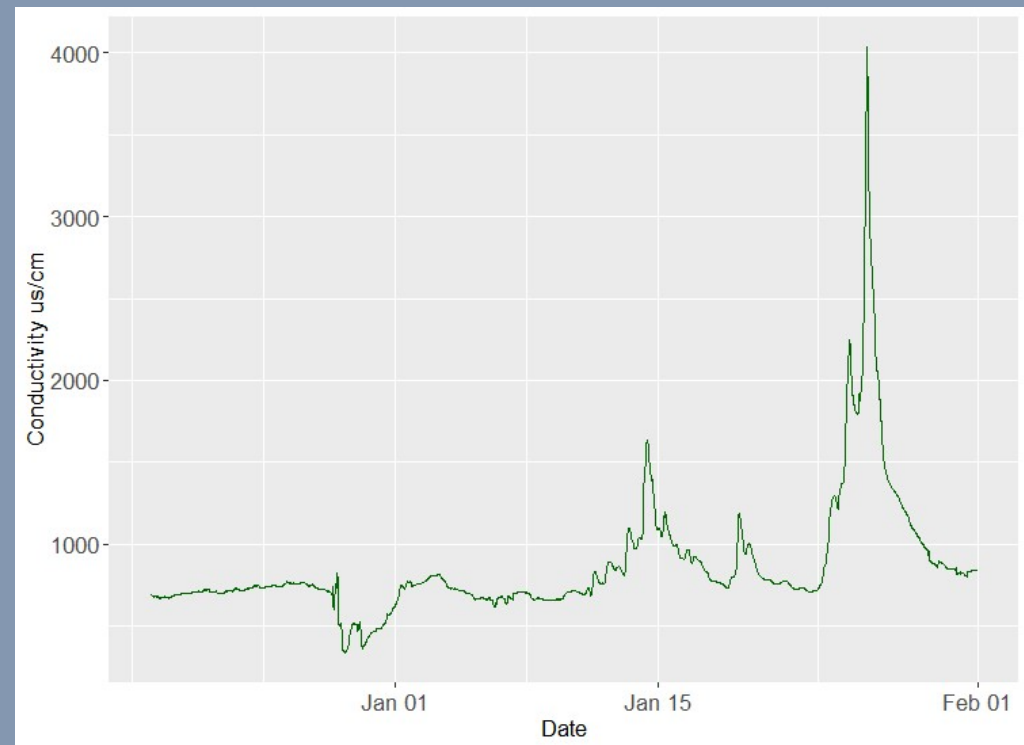
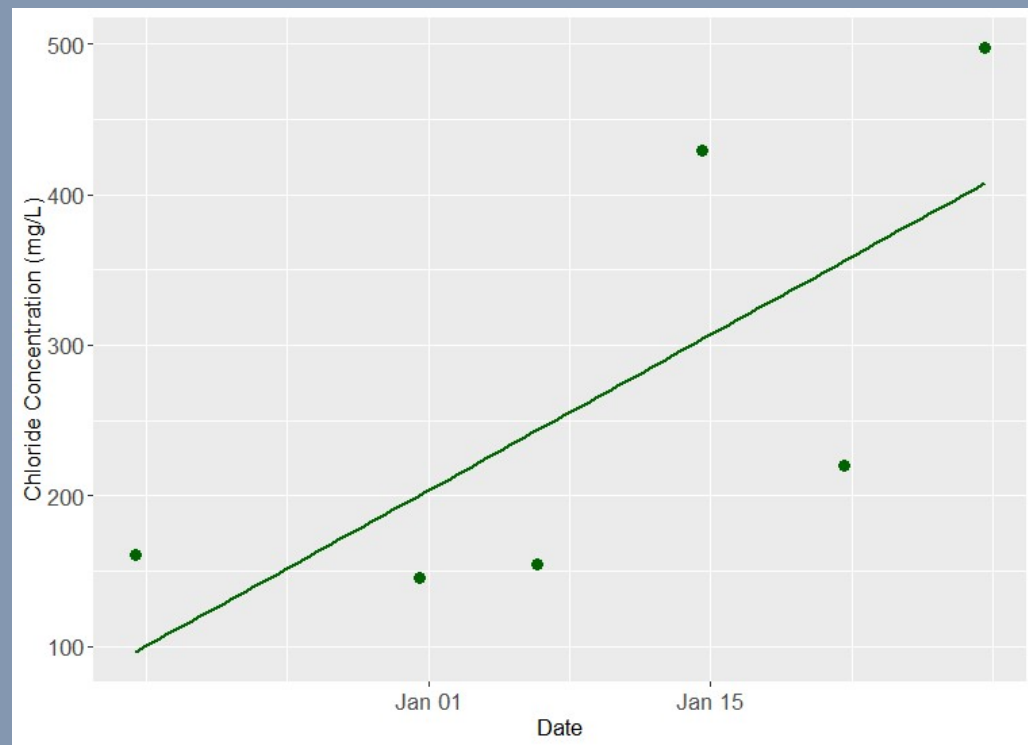




Surface Water Data Viewer Map



Trends for..





What's next?

Thank you!



lrock@wisc.edu
@RockLinnea
linnearocklimnology.weebly.com