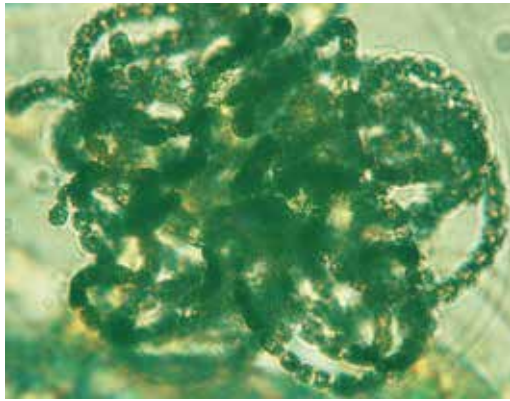


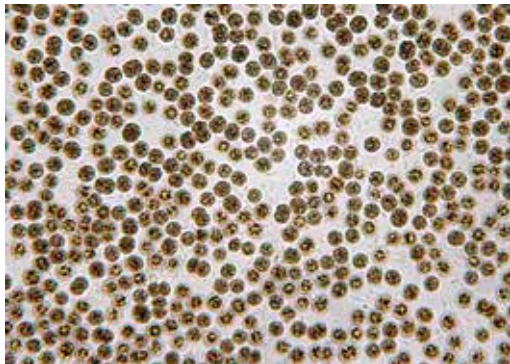
## Resilience of Lakes to Nutrient Loss and Overfishing

D. K. Button





*Anabaena*



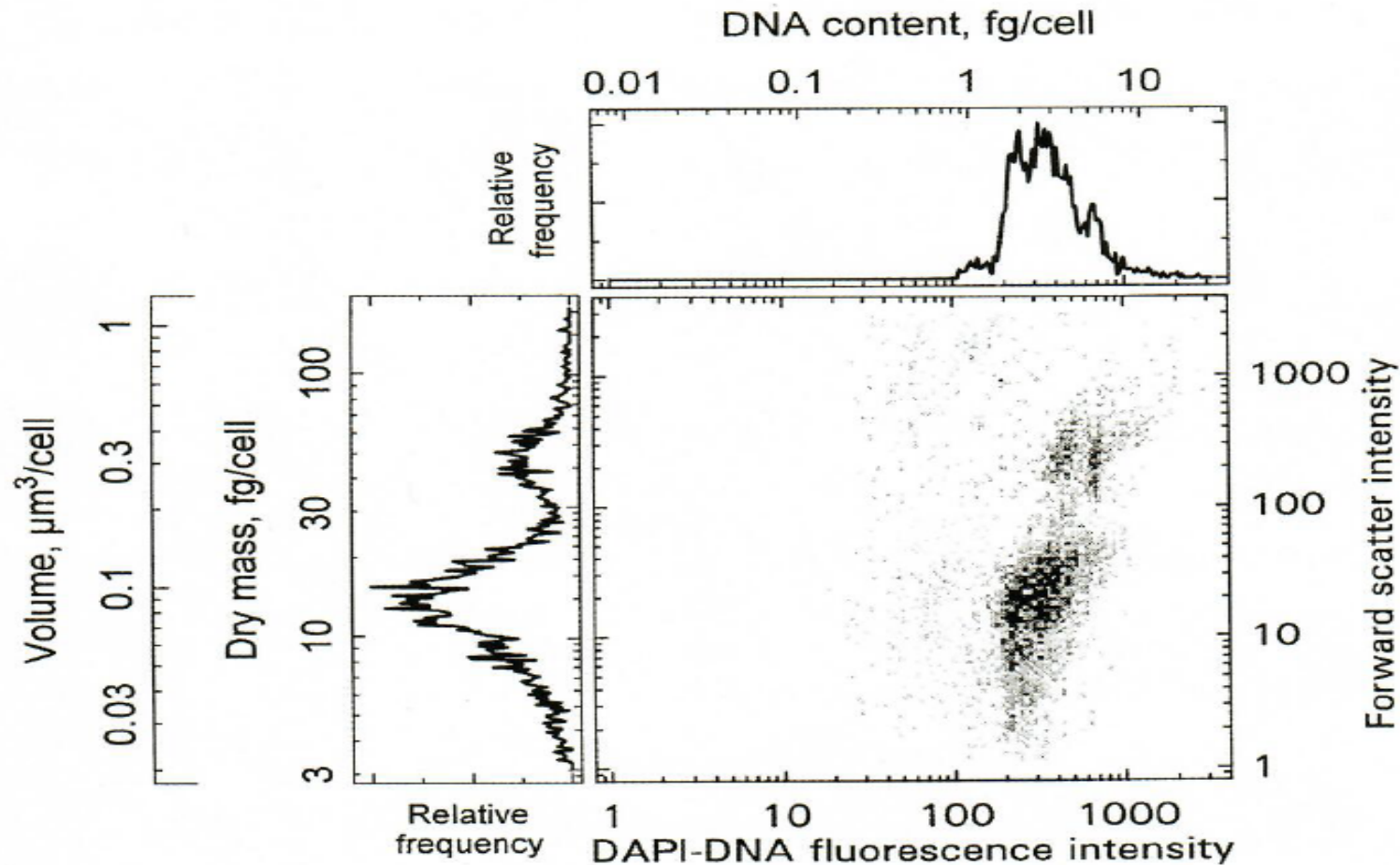
*Microcystis*



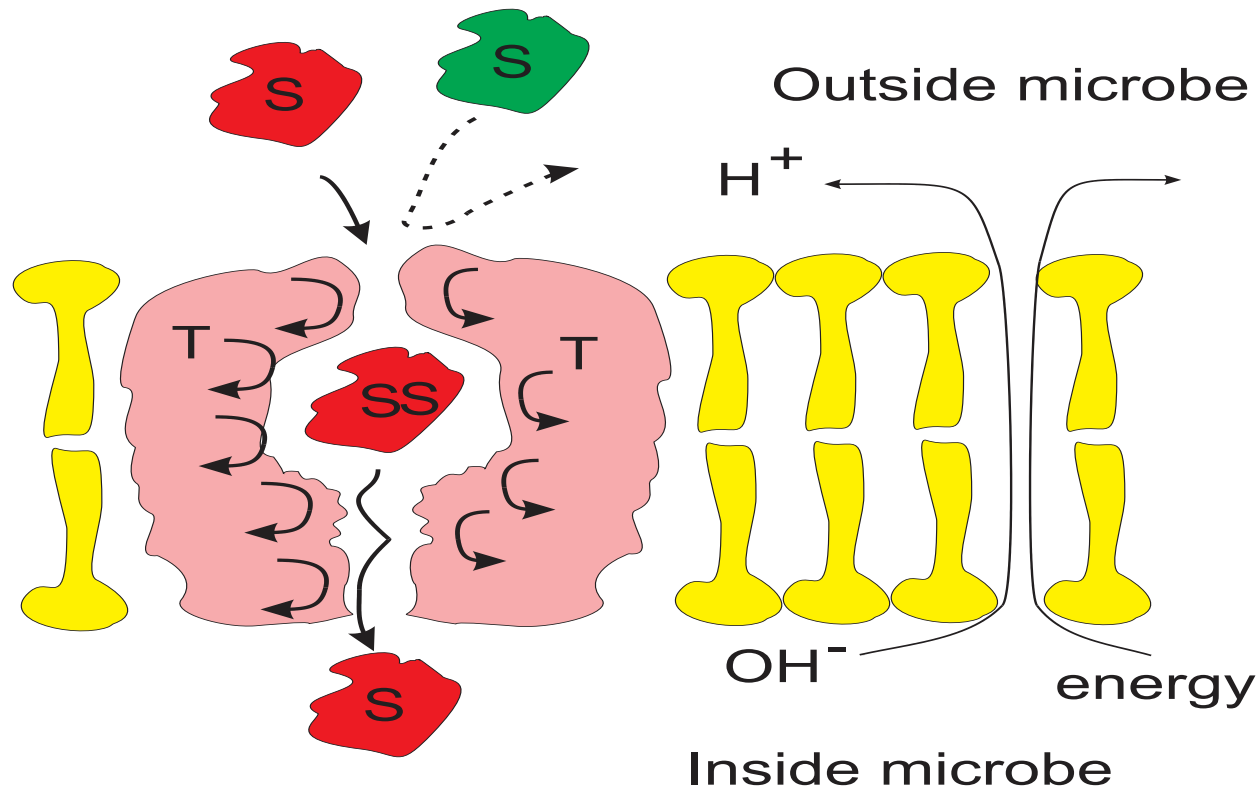
Diatoms collected by a Rotifer in winter even though phytoplankton were rare.



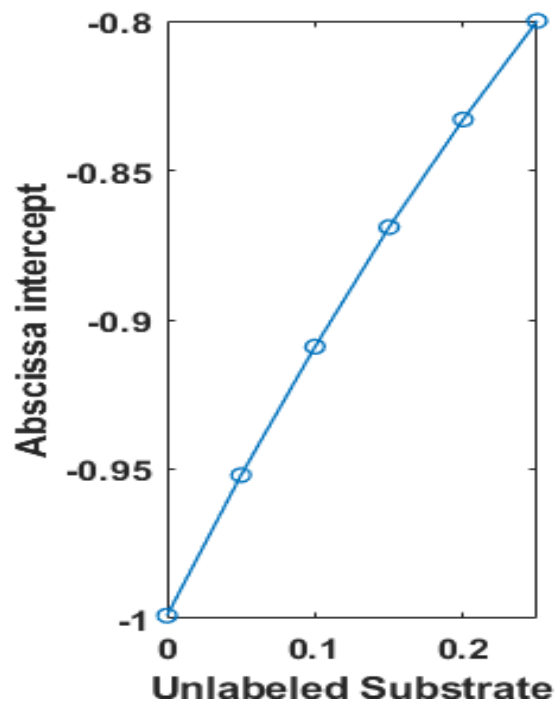
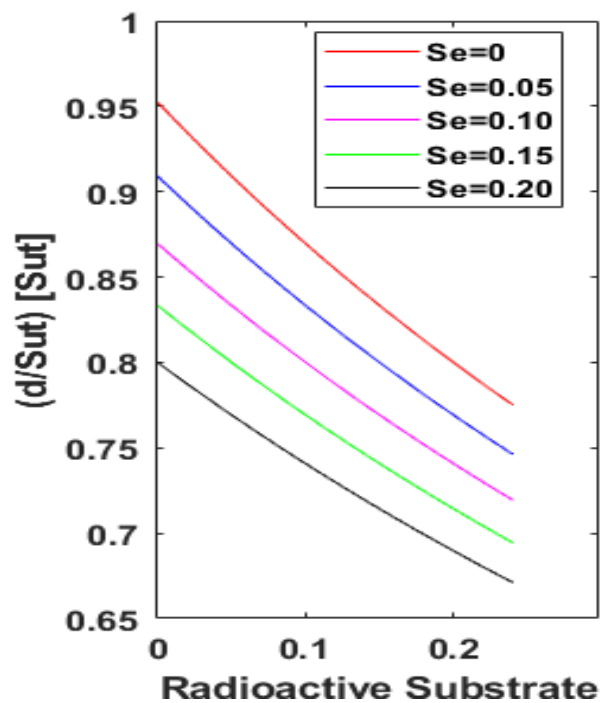
# Population, size and mass of nutrient-controlling organisms.



**Competitive inhibition:** Radioactive nutrient molecules **S** in red, can be collected by **transporters** (in pink) only when not busy transporting. Following delivery inside the cell another molecule can be collected. Success in transporting **red molecules** is predictively slowed by competition with **non-radioactive molecules** shown in green.



Slowing of radioactive nutrient transport depends quantitatively on the amount of non-radioactive nutrient revealing its concentration.



D. K. Button

[dkbutton@Alaska.edu](mailto:dkbutton@Alaska.edu)

(715) 520 7620