


# AIS, now what?

The factors lake organizations consider when choosing aquatic invasive species control methods

Corinne Johnson  
Arizona State University  
Center for Behavior, Institutions, and the Environment (CBIE)





# Introduction

- AIS is a priority challenge
- Understand the effects of AIS but not the decision making process behind the solutions
- Formation of lake organizations





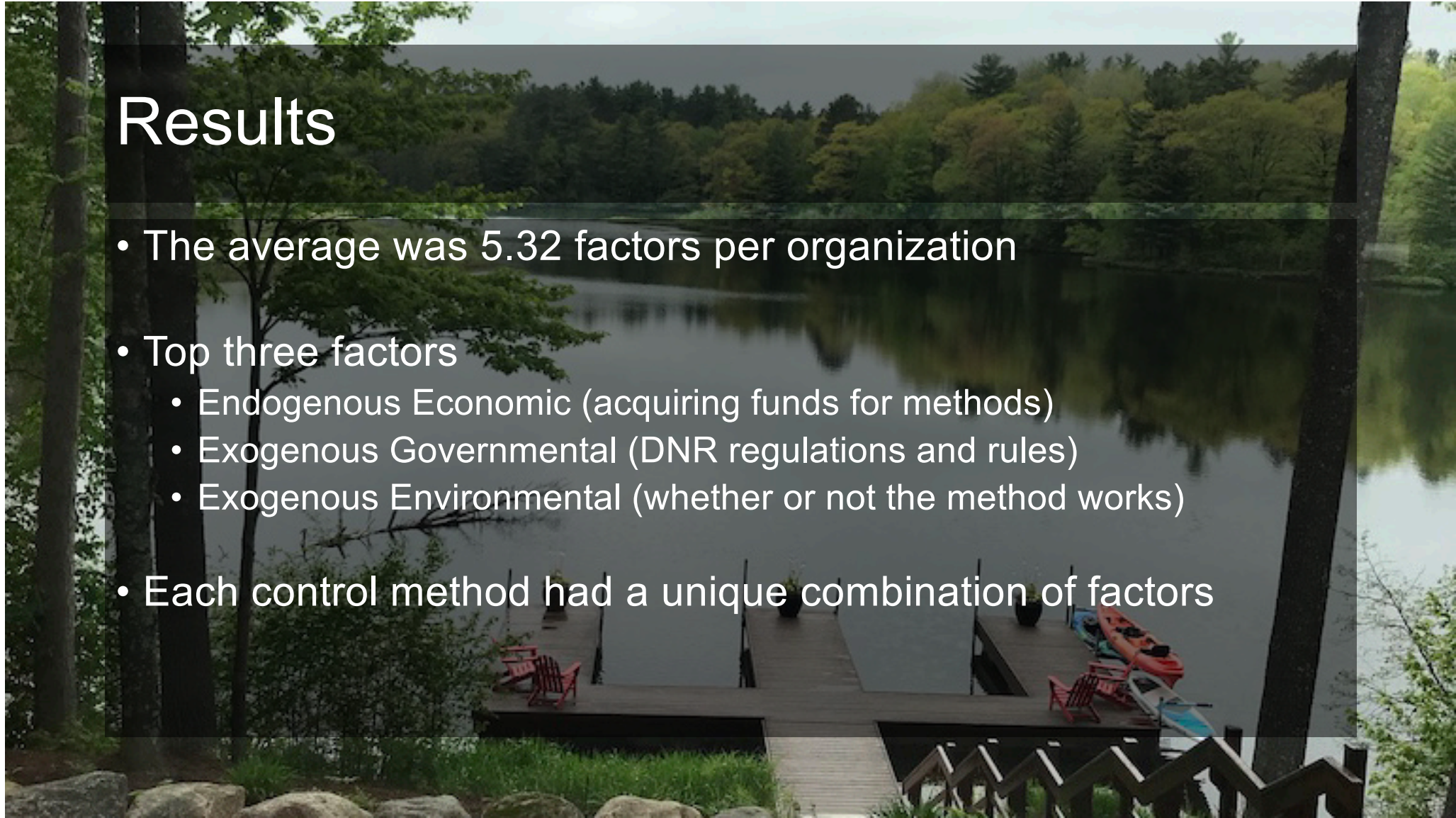
# Methods

- Interviews with board members
  - Study site: Vilas County, Wisconsin
  - Control methods
- Factors
  - Economic, Social, Environmental, and Governmental
  - Exogenous vs endogenous
- QCA Analysis
  - Comparing attributes and causal conditions leading to a particular outcome



# Results

- The average was 5.32 factors per organization
- Top three factors
  - Endogenous Economic (acquiring funds for methods)
  - Exogenous Governmental (DNR regulations and rules)
  - Exogenous Environmental (whether or not the method works)
- Each control method had a unique combination of factors



# Discussion

- Many different factors and combinations for prevention but less for the more regulated control methods
- Ultimately, it depends on the particular situation
- Understanding organizational decision making is critical to create the best first line defense against AIS





## Acknowledgments

WLC, CBIE, Wisconsin DNR, ASU, my mentors, the Cary Institute, everyone else that helped with this project, and Peggy