

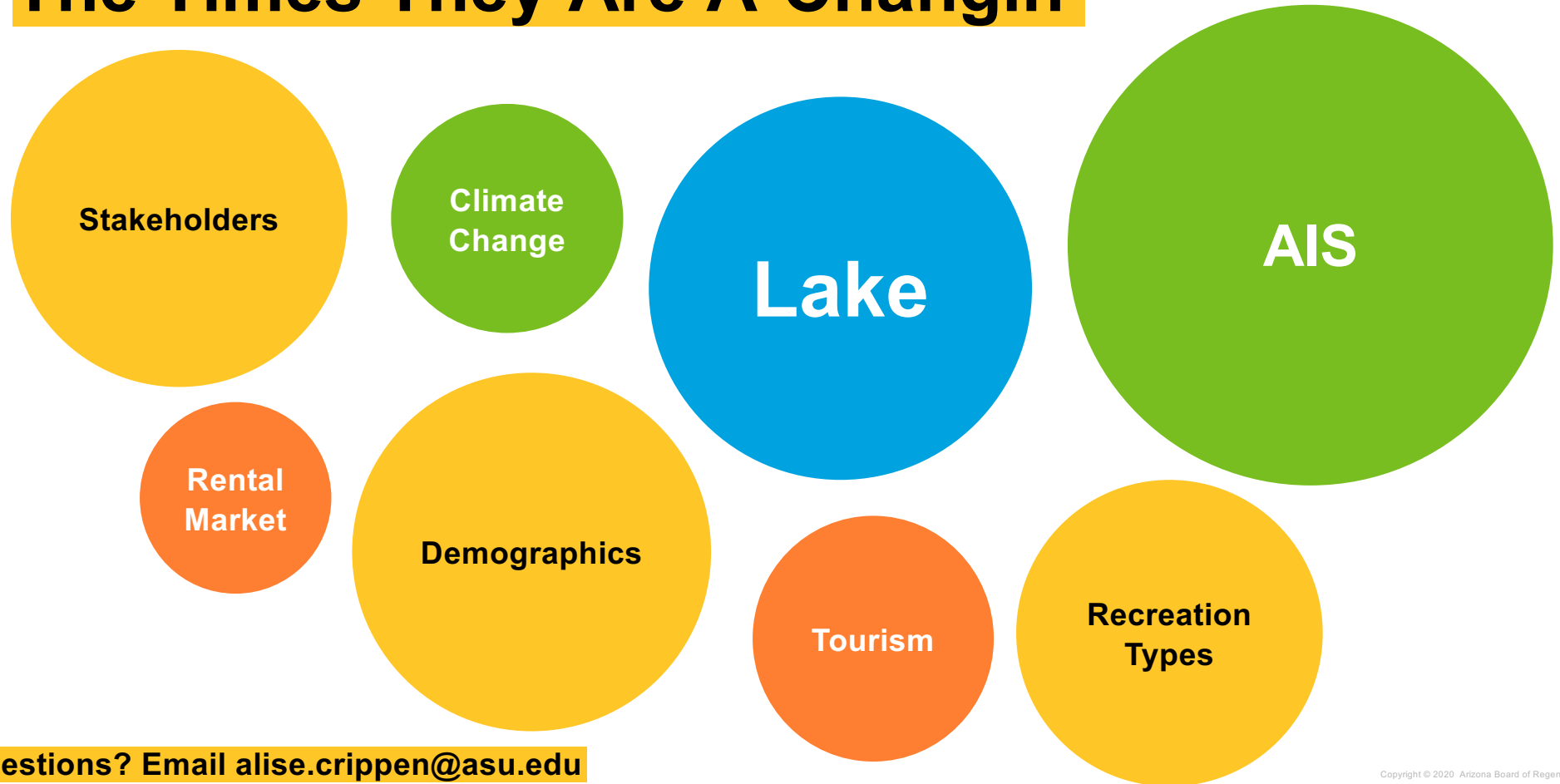


Diversity in Resilience Scopes of Lake Management



Alise Crippen
WLC 2020
April 2nd, 2020

The Times They Are A-Changin'



Questions? Email alise.crippen@asu.edu

The Study

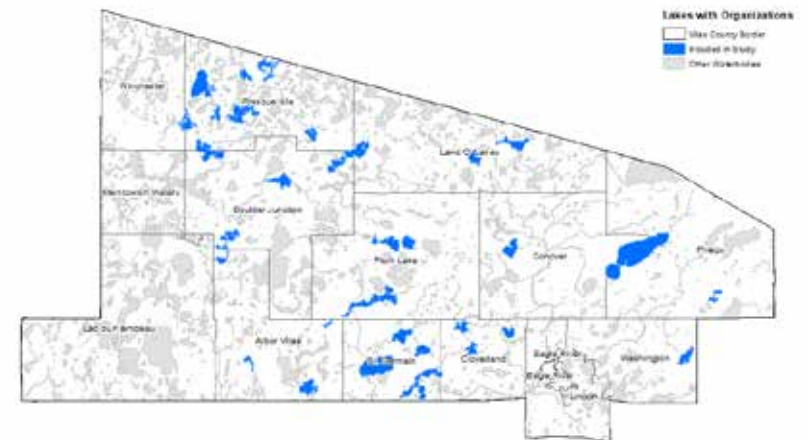
- 31 Qualitative Interviews with Lake Organizations in Vilas County, WI in Summer 2019

Research Question:

How do lake organizations in Vilas County Wisconsin build resilience?

Questions? Email alise.crippen@asu.edu

Lakes Included in Study in Vilas County, Wisconsin



5Ws

Who

What

When

Where

Why

Types of Resilience

Lake System Users

Lake System Disturbances
Generic Resilience vs Specific Resilience

Rapid vs Slow Change
Short-Term Planning vs Long-Term Planning

Lake System Boundaries

Goals
Motivations

5Ws adapted from 5Ws of Urban Resilience (Meerow & Newell, 2016)

Questions? Email alise.crippen@asu.edu

Copyright © 2020 Arizona Board of Regents.

Key Takeaways

- Organizations primarily build resilience based on change and motivation
- Understanding the motivations and disturbances of a lake organization may facilitate better communication and support



	Past Resilience	Future Resilience
Specific Resilience	<p>AIS Change, Tradition Motivated</p>	<p>Rental Change, Community Motivated</p> <p>AIS Change, Economically Motivated</p>
Generic Resilience	<p>Age Demographics Change, Tradition Motivated</p>	<p>Development Change, Various Motivations</p> <p>No AIS Change, Economically Motivated</p> <p>Population Change, Community Motivated</p>

Lake organizations use different types of resilience

Questions? Email alise.crippen@asu.edu