

Burnett County Decontamination Ordinance

Burnett County Land Services Department – Conservation Division

History

- **Original “Do not transport” ordinance was adopted in (2008)**
 - Essentially mimics the state AIS law.
- *“...no person may operate a vehicle or transport any boat, boat trailer, personal watercraft and its associated trailer, canoe, kayak, or boating equipment, fishing equipment, hunting and/ or trapping equipment... (other equipment)... from navigable waters onto a public highway if aquatic plants, terrestrial plants, or aquatic animals are attached. All plants and aquatic animals shall be removed prior to entry onto a public highway or launching a boat or placing equipment or trailers into navigable water.”*

History

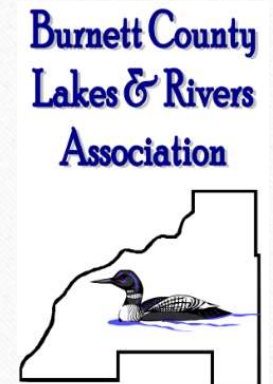
Zebra Mussels were identified in Big McKenzie Lake in (2016), and Middle McKenzie Lake in (2017)

- This caused intense public concern that the spread needs to be halted.
- This discovery of zebra mussels in the only occurrence in the Northwest portion of Wisconsin, and so far is isolated.
- These lakes are shared between Burnett and Washburn Counties causing a unique situation.
- **A push to amend the original “do not transport” ordinance to include decontamination procedures began.**



Organizations

- **BCLRA – Burnett County Lakes and Rivers Association**
 - Recommended an amendment to the Burnett County Natural Resources Committee concerning the “do not transport” ordinance.
 - From here, the ordinance amendments went to County Board where they were approved unanimously.
- **WCLRA – Washburn County Lakes and Rivers Association**
 - Similar actions to BCLRA, but in Washburn County.



What was amended the first time?

- **Changes to the original “do not transport” were made in January, 2018 including:**
 - *“If a decontamination station is available for use at a public or private access, the boater shall decontaminate per posted directions using the decontamination station provided.”*
- **Any person who violates a provision of this article shall be subject to a forfeiture plus court costs as follows:**
 - *“For the first offense, a forfeiture not to exceed \$25.00, plus costs.”*
 - *“For the second offense, a forfeiture of not less than \$25.00 nor more than \$100.00, plus costs.”*
 - *“For the third and subsequent offenses, a forfeiture of not less than \$100.00 nor more than \$250.00, plus costs.”*

Where can you read the ordinance?

- **Burnett County Website**

- Municode
- Chapter 18 (Environment), Article 5 (Aquatic Plant and Invasive Animals)

- **Link:** https://library.municode.com/wi/burnett_county/codes/code_of_ordinances?nodeId=CD_ORD_CH18EN_ARTVAOPLINAN

Rapid Response Grant

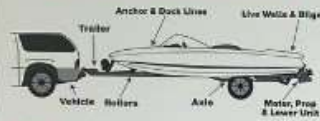
- **Burnett and Washburn Counties worked together to obtain a WDNR Rapid Response Grant**
 - Centered around the discoveries of Zebra Mussels in the McKenzie Lakes
 - Burnett County was the administrator of the grant
- **What was the grant used for?**
 - Purchasing decontamination stations and their associated materials
 - Purchasing zebra mussel tow nets
 - Purchasing zebra mussel plate samplers
 - Purchasing outreach materials
- **Current funds will end in 2020 (summer/fall)**

BOAT CLEANING & DECONTAMINATION STATION

BEFORE ENTERING (AND LEAVING) THE BOAT LAUNCH...

HELP... Prevent the spread of invasive species.
CLEAN BOATS... CLEAN WATER!

CHECK THESE LOCATIONS FOR INVASIVE SPECIES:



- **INSPECT:** Boats, PWCs, trailers and equipment.
 - **REMOVE:** All attached aquatic plants, animals and mud.
 - **DRAIN:** All water from boats, vehicles, equipment and live wells.
 - **NEVER MOVE:** Plants or live fish from a body of water.
- Listed exceptions apply. Visit www.DNR.MT.gov and search for "Belt Laws."

MOTORS

After removing from the water, tip the motor down and turn the motor over several times to dispel lake water from the cooling system.
Be sure and drain water from your boat, live well and bilge system away from the lake.

CLEANING

- Use these tools to remove vegetation from your boat, PWC & trailer.
- Run PWC for 10-15 seconds while on trailer.
- Please return tools to this station; we have confidence in the honor system

Cleaning Brush Weed Remover Eye Protection

DECONTAMINATION REQUIRED
By County Ordinance (if available)

DECONTAMINATION

Decontamination measures with a solution of Chlorine (bleach) should be taken prior to moving boats and equipment from one waterbody to another to help kill zebra mussels and other invasive aquatic organisms.

Every effort should be made to keep the bleach solution and rinse water out of surface waters. Pull the boat and trailer off the ramp and onto a fairly level area and away from the sloped area.

- Please spray your boat and trailer with this hand sprayer with a dilution of 2 tablespoons of bleach in a gallon of water.
- The outside of the boat, trailer, live wells, bilges and motor, should be sprayed with the bleach solution and left wet for 10 minutes.
- The live well should be flushed with water before the next use.
- Wear the eye protection while spraying and stay upwind of the spray.

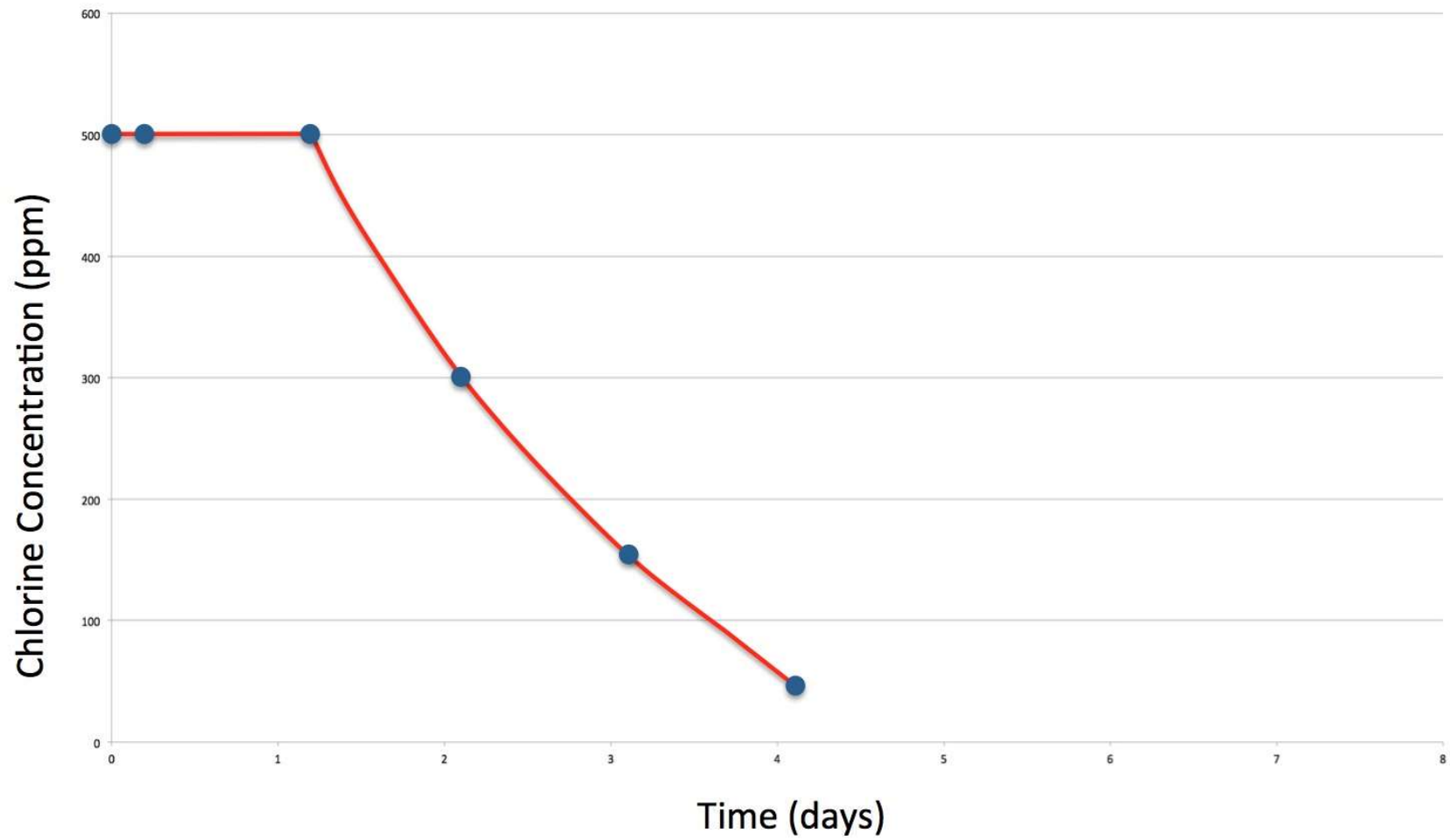


STOP AQUATIC HITCHHIKERS!

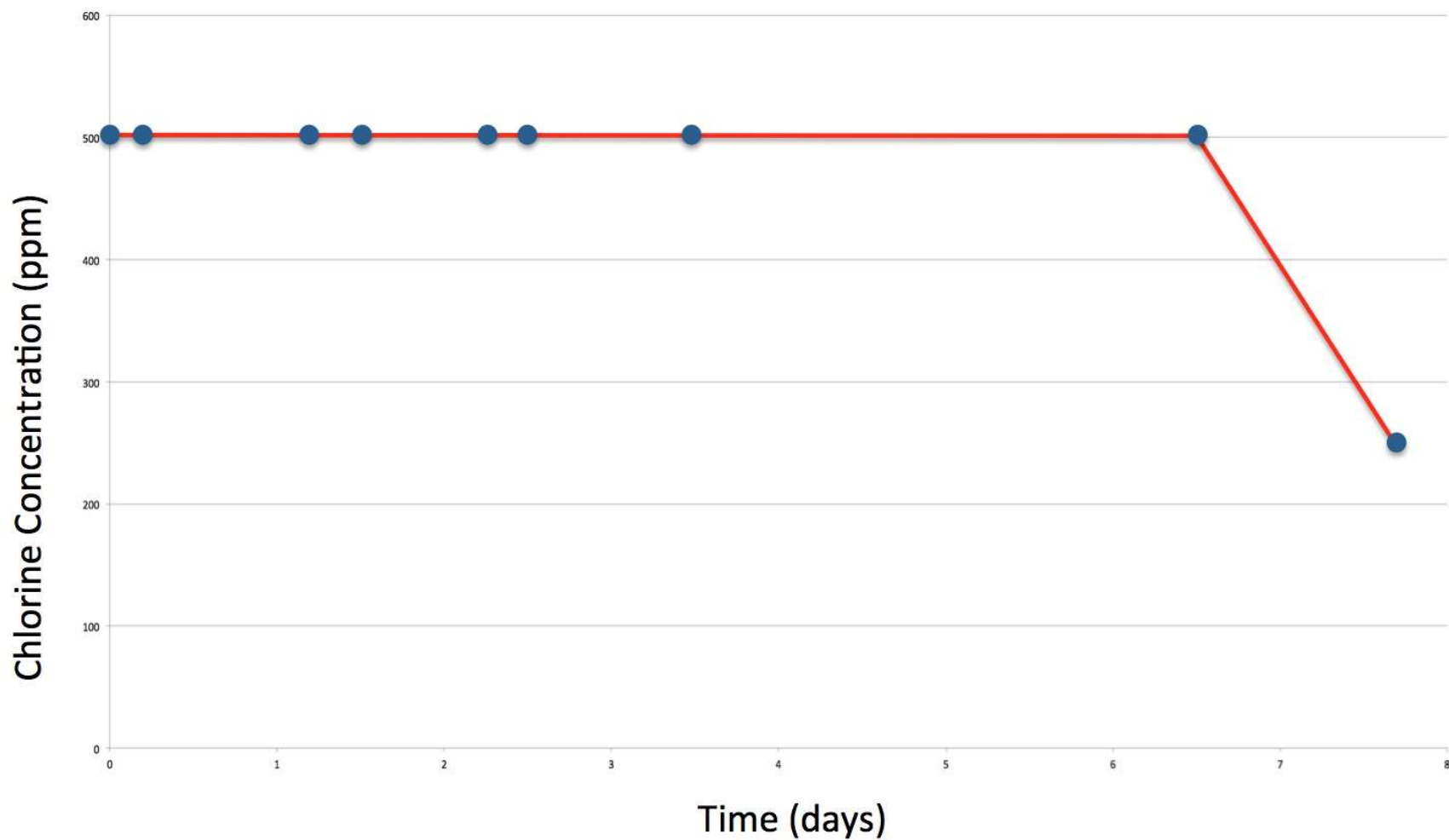
Notice the bucket!



Unprotected Sprayer



Sprayer placed in 5 gallon Plastic Bucket



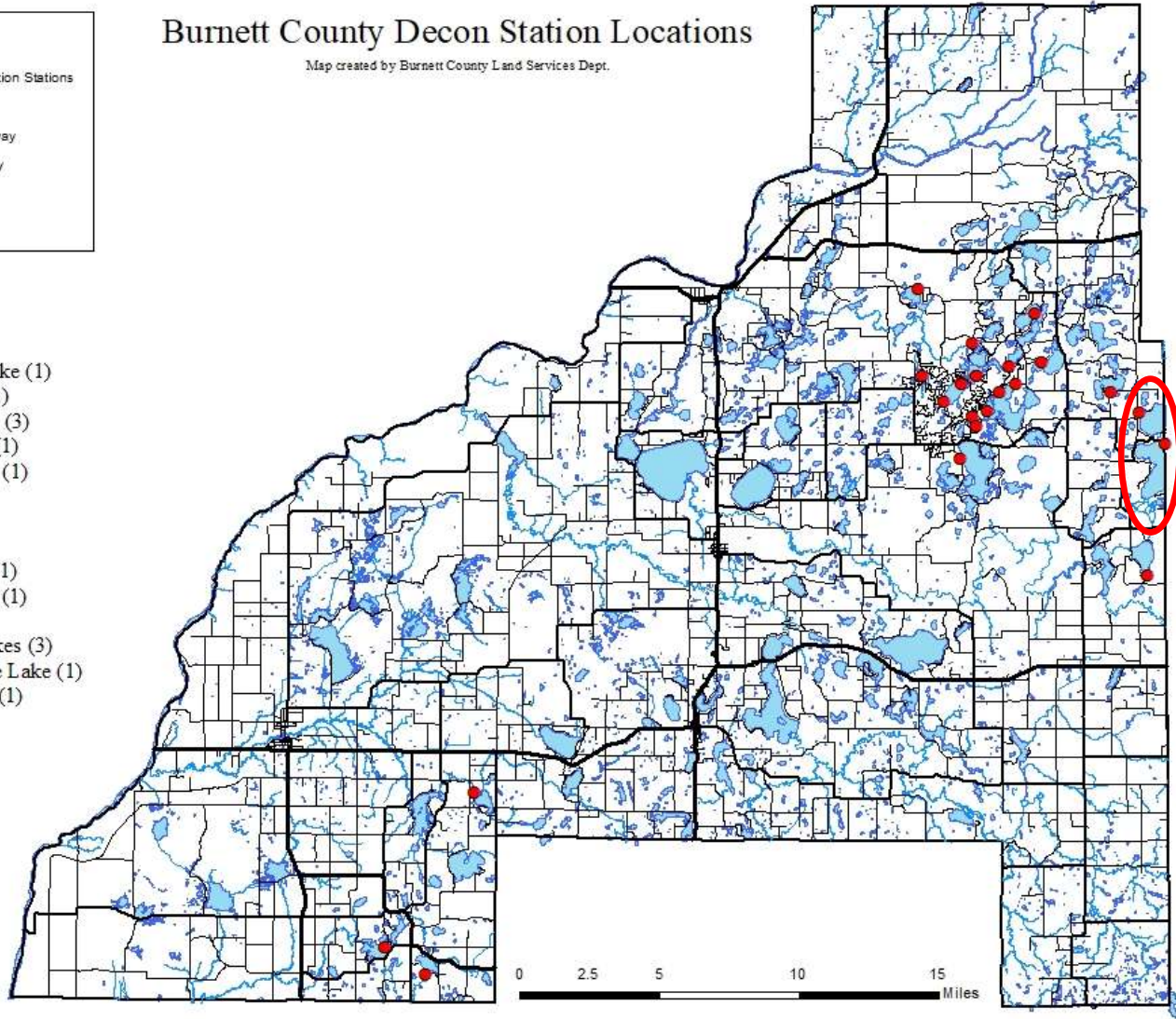
Legend

- Decontamination Stations
- Town Road
- County Highway
- State Highway
- Rivers
- Lakes

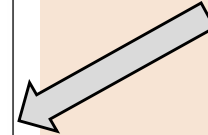
Burnett County Decon Station Locations

Map created by Burnett County Land Services Dept.

- Big McKenzie Lake (1)
- Big Trade Lake (1)
- Birch Island Lake (3)
- Culbertson Lake (1)
- Des Moines Lake (1)
- Fish Lake (1)
- Lake 26 (1)
- Lipsett Lake (1)
- Little Bear Lake (1)
- Little Wood Lake (1)
- Long Lake (1)
- Loon-Cadotte Lakes (3)
- Middle McKenzie Lake (1)
- North Sand Lake (1)
- Rooney Lake (1)
- Shoal Lake (2)



Most of the decontamination stations are centered around the McKenzie Lakes





How is non-compliance reported?

- **UW-Extension AIS Violation Report Form is used**
 - Form has been used by many CBCW inspectors before (familiar)
 - Accessible online from CBCW page
 - Has all the information necessary when filled completely
- **Violations are forwarded to Burnett County's Conservation Division**
 - If the violation is strictly a decontamination violation, it is forwarded to the Sheriff's Department
 - If the violation is a "do not transport" – Burnett County can enforce but usually forwards these on to WDNR Wardens



Reporting a Burnett County AIS Violation:

What you should be submitting:

1. AIS Violation Report Form
 - a. Form can be found on the UW-Extension Clean Boats, Clean Waters website and should be filled out with as much information as possible.
 - b. Please remember to check the box stating law enforcement may contact you for more details regarding the incident. This will help law enforcement follow-up with the reported incident.
2. Pictures/Videos
 - a. Pictures and videos can be the most effective way for showing an AIS violation. Photographic evidence of suspects leaving or entering a waterbody with plants, mud, or water can help issue a citation if one is warranted.
 - b. Videos are also great tools to clearly show a violation, however, they may be more difficult to obtain.
 - c. If you are in a public area, photos and videos are legal to obtain.

Where you should send the violation:

1. Burnett County AIS Coordinator
 - a. Cannot enforce violations, but can forward on to correct agency/personnel.
 - b. Thomas Boisvert
 - i. tboisvert@burnettcounty.org
 - ii. (715)-349-2109 Ext. 2613

What you should expect:

1. Law Enforcement Contact
 - a. Law enforcement may wish to contact you for gathering more information, obtaining a personal statement, or to stand as a witness.
 - b. By making your information as clear as possible when it was first submitted, law enforcement shouldn't need to contact you unless necessary.
2. Time
 - a. Law enforcement is always busy, and they do their best to stay current on violations. However, be prepared to expect some time before follow-up.

Please remember:

1. Never put yourself in a dangerous situation. If an individual is hostile, safely gather as much information as you can and call law enforcement.
2. Education is a powerful tool. Some people truly may be unaware as to why they should be concerned about AIS, and you should do your best to calmly inform them why AIS laws are in place.

How is non-compliance reported?

- **Forms of Violations**
 - UW-Extension Violation Forms
 - ILIDS camera submissions
 - Personal photos
- **Law enforcement may need an incident report from the inspector.**
- **Whatever is submitted needs to be credible enough to uphold in court if the violation were to be challenged.**

Enforcement

- **The Burnett County Sheriffs Department is directly responsible for enforcing the Decontamination Ordinance.**
 - Recreation Officer is the primary contact.
 - No fines have been issued at this time.
 - “First offenses” are given a verbal and written warning (letter), and the violators information is kept on file.
 - Discretion for fines is reserved for law enforcement.

BURNETT COUNTY SHERIFF'S DEPARTMENT

7410 County Road. K, Room #122
Siren, WI 54872
(715)-349-2121



To:
From:
Date:

(NAME).

This letter is to inform you that on **DAY** of **DATE** at approximately **TIME** you were observed failing to use the provided decontamination materials to clean your watercraft at **LAKE**. When present, decontamination materials and their associated procedures must be used to comply with Burnett County ordinance number 2008-01. Information regarding this ordinance can be found in Burnett County's Code of Ordinances, Chapter 18, Article 5.

Aquatic invasive species (AIS) include plants, animals, or organisms that are not native to a body of water and cost the state of Wisconsin millions of dollars each year. The spread of such species affect not only the individuals who live on the lake but also public recreationalists. Aquatic invasive species have been known to damage personal property, impact local fish populations, and ultimately hurt the economy surrounding the lake. Many infested lakes around Wisconsin are very close to bodies of water that are free of invasive species. A local example of this would be Big and Middle McKenzie Lakes which have zebra mussels while the surrounding waterbodies do not. This makes preventing the spread of invasives crucial, and this is why there are laws and ordinances prohibiting the transport of aquatic plants and animals.

The state of Wisconsin requires waterbody users to remove all aquatic plants, animals, debris, and water before entering and leaving a waterbody. Burnett County requires this as well, but also goes one step further to require decontamination procedures to be used when materials are present. The state of Wisconsin and Burnett County are able to issue fines regarding issues that may spread AIS, and State Wardens and County Sheriff Departments enforce the regulations to full effect.

A citation will NOT be issued in this case, however, a second offense WILL carry a citation. Burnett County encourages you to spread this information on to your friends and family about aquatic invasive species and the laws and ordinances in place to help slow the spread. If you have questions about how AIS impacts Wisconsin's water resources, you may email Thomas Boisvert, Burnett County AIS Coordinator at tboisvert@burnettcounty.org.

Respectfully,

AIS Violation Report Form

Boat Landing/Location: Birch Island lake

Date: 7/3/19 Time: 12:17 AM or PM (M)

County: Burnett Town/Village/City: Scott

Vehicle License Number: [REDACTED] State Registered: [REDACTED]

Boat Registration: [REDACTED] State Registered: [REDACTED]

Car/Boat Personal Watercraft Information -

Year: _____ Make: Ranger Model: _____ Color: Purple

Violator Information: Male or Female

Name of Boat Operator: _____

Hair: Bald Eyes: _____ Approx. Height/Weight: _____

Other Description (clothing, etc.): _____

Photo Taken of Violation: Yes or No

Description of Violation/Comments: Refused to Bleach. Said Ruins gel paint.

Did wipe down Boat with cloth however.

CBCW Inspector's Contact Information -

Name: [REDACTED] Phone Number: [REDACTED]

Address: _____

Please check box if law enforcement may contact you for more information about the violation. You will remain confidential in this case.

Please check box if you do not want law enforcement to contact you for more information about the violation.

Regional Water Guard Contact Info:

To report the violation,
contact your area Water
Guard or DNR Warden
OR call 1-800-TIP-WDNR

Local DNR Warden Contact Info:

Summer 2019

- **This was the first summer where decontamination violations became prevalent.**
- **There was yet to be a defined system for handling these violations.**
- **The new AIS Coordinator had to take input from Sheriffs Department, WDNR, and Citizens on how to make a reporting process simpler and more effective.**
 - Violation Reporting through UW-Extension Form
 - Violation Warning and Fine Letters
 - Record keeping to track violations – repeat offenders
 - FAQ sheets in cooperation with Washburn County

Summer 2019

- **Bass Tournaments**

- There were several bass tournaments where participants refused to decontaminate
- The tournaments were all under the 20 boat requirement – where permitting is needed through the WDNR
- There were concerns that the provided bleach solution would harm the participants finish on their boat
- Boat manufacturers were contacted to provide statements that the provided solution is safe **(See FAQ sheet)**

- **All violators were contacted by the Burnett County Sheriff's Department**

- Bass club organizer was contacted as well
- Sheriff's Department has had a presence at boat landings, and talked to boaters regarding the ordinance

Decontamination FAQ

- **Landing poster – created by Lisa Burns and Tom Boisvert, Burnett County AIS Coordinator**
 - To be posted on decontamination stations
 - More of the common questions
 - Allows the public to read some information while decontaminating
- **In Depth Document – created by Lisa Burns, Washburn County AIS Coordinator**
 - Can be handed out at meetings
 - Have on-hand in offices
 - Inspectors have them on hand
- **You may request these documents using the contact information on the last slide.**

Decontamination Frequently Asked Questions

Created by Burnett and Washburn County Land and Water Conservation Departments

What is decontamination?

It is the process of removing all aquatic plants and animals, including materials that may contain or transmit aquatic invasive species (AIS) beyond physical removal or other methods.

Why have a decontamination station?

Hand removal is effective at removing plants and small animals from watercraft equipment. Decontamination is another tool to help kill invasive species that are not visible or very difficult to see (zebra mussels and spiny water fleas).

Who maintains the decontamination station?

Citizen members of a lake association or lake district change the solution to the recommended mix of 2 tablespoons bleach per gallon of water. They are trained to properly mix the solution.

What is the concentration of bleach?

Standard bleach is 52,500 ppm chlorine, while the bleach concentration being used here is ~500 ppm. Reported in percentage, regular strength household bleach is 5.25% sodium hypochlorite while this solution is 0.05% sodium hypochlorite.

Are there runoff issues?

A fine mist of the bleach/water solution is applied using a hand-pump sprayer. The solution covers the boat and trailer and is thoroughly applied around its perimeter. It evaporates quickly and no runoff into the lake occurs. There is no harm to the lake once the boat/trailer goes into the water.



Will the bleach solution in my live-well harm the fish I keep in there?

Between the low initial concentration of the applied solution, the off-gassing of the chlorine while sitting, and then the dilution of any residual chlorine, the likelihood that fish would be impacted by the bleach is very low. An alternative would be to use ice to keep fish fresh until you get home.

Will decontamination make a difference?

The vast majority of invasions are human mediated and theoretically preventable. Each prevention action we take, reduces the probability of a new invasion by a boat moving aquatic invasive species.

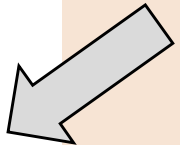
Recreational boating is a way AIS move around and once they are here, we all share a responsibility to be doing everything we can to prevent their spread.

Will this harm my boat or equipment?

There are no known cases of damage from properly using any decontamination method. An even higher solution than the one provided is recommended to clean vinyl siding on a house. The WI DNR uses this solution on all of their boating equipment every day, and tournament fishing boats have been sprayed down and have shown no harmful effects (see below).

Ranger Boats: "At any rate – household bleach at full concentration is not going to harm the gel coat when used during washing and rinsed off."

Tuffy Boats: "The described bleach solution is 100% safe on all gelcoat applications."



Decontamination Station Frequently Asked Questions

1. **What is decontamination?**
 - a. It is the process of removing all aquatic plants and animals, including materials that may contain or transmit aquatic invasive species (AIS) beyond physical removal or other methods.
2. **What is a decontamination station?**
 - a. The station may consist of high temperature water (140 degrees or more) applied with a pressure washer by trained personnel or a recommended chemical solution applied with a low pressure sprayer, or other techniques or devices.
3. **Why have a decontamination station?**
 - a. Hand removal is effective at removing plants from watercraft equipment and removes small animals. Decontamination is another tool to help kill invasive species that are not visible or very difficult to see (zebra mussels and spiny water fleas).
4. **Who owns a boat landing?**
 - a. Boat landings can be owned by various entities, including a private citizen, township, state or federal government. Permission to install a decontamination station must be approved by the landing owner.
5. **Who maintains the decontamination station?**
 - a. Citizen members of a lake association or district change the solution to the recommended mix of 2 tablespoons bleach per gallon of water. They are trained to properly apply the solution to equipment.
6. **What is the concentration of bleach?**
 - a. Standard bleach is 52,500 ppm chlorine, while the bleach concentration being used here is ~500 ppm. Reported in percentage, regular strength household bleach is 5.25% sodium hypochlorite while this solution is 0.05% sodium hypochlorite.
7. **Where should the decontamination station be installed?**
 - a. It is recommended to be installed away from the launch area and where vehicles use an area for turn-around/back up. If there is a sloped launch, it is installed away from the slope, upward on land.
8. **Are there runoff issues?**
 - a. A fine mist of the bleach/water solution is applied using a hand-pump sprayer. The solution covers the boat and trailer and is thoroughly applied around its perimeter. It evaporates quickly and no runoff into the lake occurs. There is no harm to the lake once the boat/trailer goes into the water.
9. **Will it kill grass?**
 - a. The concentration of the bleach solution being used is low enough that it should not kill grass. A much stronger solution (1 cup bleach/gallon vs 2 tablespoons/gallon) is often used to clean vinyl siding on houses with no effect on nearby grass and landscaping.
10. **I'm worried that this decontamination method will harm my boat/equipment.**
 - a. There are no known cases of damage from properly using any decontamination method. As stated in #9 an even higher solution is recommended to clean vinyl siding on a house. The WI DNR uses this solution on all of their boating equipment every day and tournament fishing boats have been sprayed down and have shown no harmful effects.
 - b. **Ranger Boats:** "At any rate—household bleach at full concentration is not going to harm the gel coat when used during washing and rinsed off."
 - c. **Tuffy Boats:** "The described bleach solution is 100% safe on all gelcoat applications."

11. **I'm worried that the bleach/water solution in my live well will harm fish I keep in there.**
 - a. Between the low initial concentration of the applied solution, the off-gassing of the chlorine while sitting, and then the dilution of any residual chlorine, the likelihood that fish would be impacted by the bleach is very low.
 - b. An alternative would be to use ice to keep fish fresh until you get home.
12. **I don't think that this will make a difference.**
 - a. The vast majority of invasions are human mediated and theoretically preventable. Each prevention action we take, reduces the probability of a new invasion by a boat moving aquatic invasive species.
 - b. Recreational boating is a way AIS move around and once they are here, we all share a responsibility to be doing everything we can to prevent their spread.
13. **What are people doing about other pathways? That's a big reason AIS moves around.**
 - a. Ballast water—Recently approved regulations will facilitate the placement of ballast water treatment technology on ocean going shipping vessels.
 - b. Ducks and turtles—If ducks and turtles were moving AIS, we'd expect a much more random distribution. More small ponds and lakes without access would contain AIS. As it stands, lakes that have boat ramps have AIS, indicating they are much more likely to be moved by people with boats than ducks and turtles.
 - c. People letting pets go—The national Habitattitude campaign promotes responsible pet ownership and outlines alternatives to pet release. Wisconsin uses this program to develop pet rehoming networks so that people have alternatives to pet release.

As of February 2018, Washburn and Burnett Counties have passed an ordinance that states "if a decontamination station is available at a boat landing, the boater is required to use it".



For more information contact:

Burnett County AIS Coordinator, Tom Boisvert at (715)-349-2109 Ext. 2613
Washburn County AIS Coordinator, Lisa Burns at (715)-468-4654

Another Ordinance Revision (Jan. 2020)

- **Increased forfeiture amounts**
- **Any person who violates a provision of this article shall be subject to a forfeiture plus court costs as follows:**
 - *“For the first offense, a forfeiture of not less than \$125.00, nor more than \$225, plus costs.”*
 - *“For the second offense, a forfeiture of not less than \$250.00 nor more than \$350.00, plus costs.”*
 - *“For the third and subsequent offenses, a forfeiture of not less than \$350.00 nor more than \$450.00, plus costs.”*
- **Ordinance language (minor)**
- **Once again passed unanimously by County Board**

Summer 2020

- **Stronger Enforcement**

- Now that a protocol has been established with the Sheriff's Department, enforcement will go much smoother.
- All inspectors at the landings will have the same reporting forms, and FAQ sheets.
- FAQ posters will be posted on the decontamination stations.

- **New Stations**

- 3 new stations for Yellow Lake
- 1 new stations for Nicaboyne Lake
- This brings the total to 25 stations in Burnett County alone.

2020 CBCW Workshops

- **These workshops will include:**
 - What is expected of water users where there are decontamination materials available
 - How to correctly introduce decontamination procedures to water users
 - Review of all the forms previously discussed
 - Regular CBCW material
- **These workshops have been postponed due to the COVID-19 Pandemic**

Questions? Comments?

Thomas Boisvert

Burnett County AIS Coordinator

tboisvert@burnettcounty.org

715-349-2109 EXT 2613

Dave Ferris

Burnett County Conservationist

dferris@burnettcounty.org

715-349-2109 EXT 2615

Lisa Burns

Washburn County AIS Coordinator

Lburns@co.washburn.wi.us

715-468-4654