

# Vilas County Land & Water Conservation Uses Citizen Data

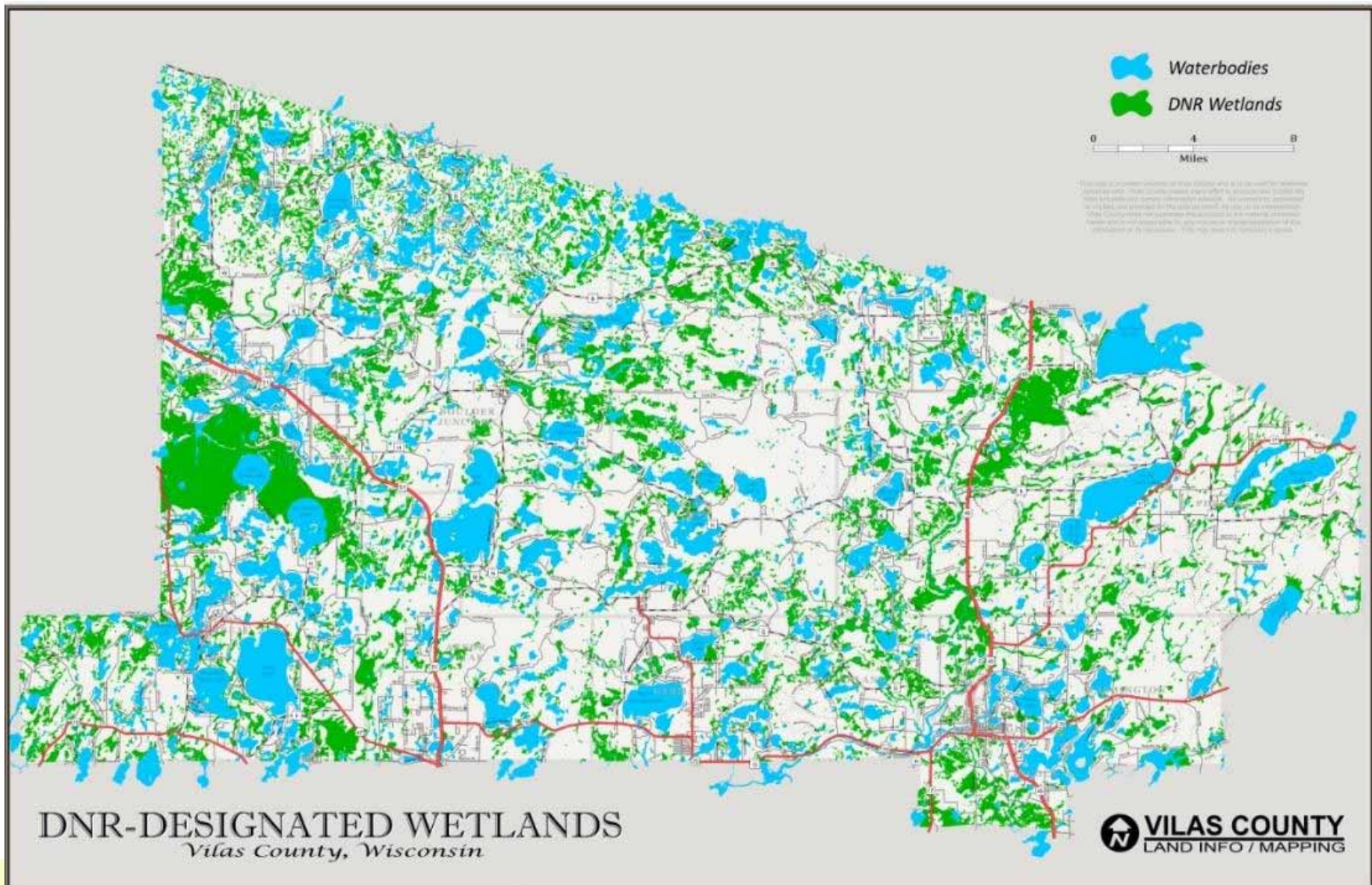
Carolyn Scholl  
Quita Sheehan  
Cathy Higley





# Lake Report Cards





# Watershed?

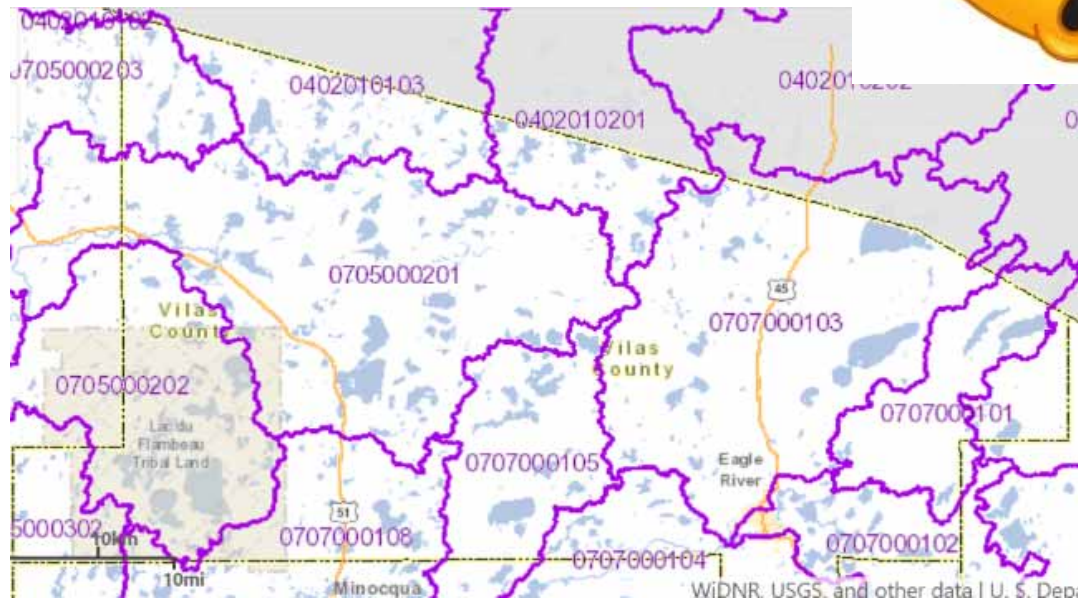


## Existing Watershed Analyses

- Larger Basins HUC 10 analyses available
  - HUC 10 can = several 100 lakes!
- Did not include erosion “K factors”



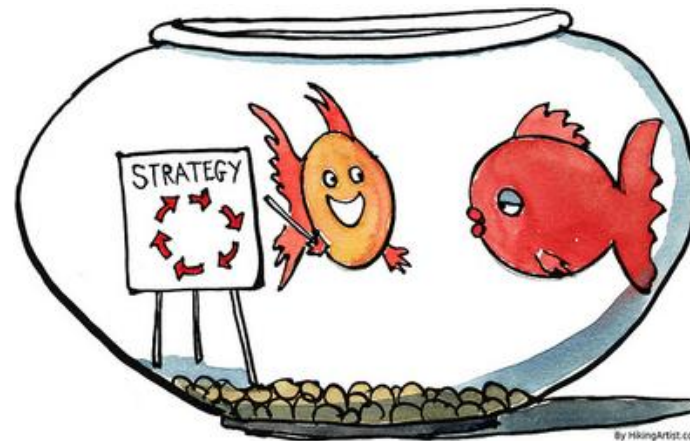
www.faccinefb.com



Source: WDNR Surface Water Data Viewer

## HUC 12 Watershed

- Prioritize within <200 lakes (typically 10-80)
- Include K factors
- Graspable strategy





# Volunteer Data!

## Water quality data through CLMN

[Business](#)
[Licenses & Regulations](#)
[Recreation](#)
[Env. Protection](#)
[Contact](#)
[Join DNR](#)

Lake Name:

### Citizen Lake Monitoring Network

[Enter Data](#)

[Log in to enter your data.](#)

The Citizen Lake Monitoring Network, the core of the Wisconsin Lakes Partnership, creates a bond between over 1000 citizen volunteers statewide and the Wisconsin DNR. Our goals are to collect high quality data, to educate and empower volunteers, and to share this data and knowledge.

**Remote sensing highlights**

- Remote sensing of water quality
- Remote sensing research
- Environmental education

Volunteers measure water clarity, using the Secchi Disk method, as an indicator of water quality. Volunteers may also collect chemistry, temperature, and dissolved oxygen data, as well as identify and map plants or watch for the first appearance of Eurasian Water Milfoil near boat landings.

In addition, satellite images are used to retrieve water clarity data for lakes across the state. This effort began in 1999 when the University of Wisconsin-Madison Environmental Remote Sensing Center (ERSC) developed a model for the retrieval of water clarity data from satellite images and Citizen Lake Monitoring Network volunteers provided on-the-ground Secchi data to calibrate this model for each satellite image. Water clarity data was retrieved for over 8,000 lakes statewide between 1999 and 2001. The DNR continues to analyze data in this way today in its remote sensing program.

Interested? Contact your local [Citizen Lake Monitoring coordinator](#) about getting started.

#### Graphs & Data

- [Adams County](#)
- [Ashland County](#)
- [Barron County](#)
- [Bayfield County](#)
- [Brown County](#)
- [Buffalo County](#)
- [Burnett County](#)
- [Calumet County](#)
- [Chippewa County](#)

- [Manitowish County](#)
- [Marathon County](#)
- [Marquette County](#)
- [Menominee County](#)
- [Milwaukee County](#)
- [Monroe County](#)
- [Oconto County](#)
- [Ozaukee County](#)

**Lakes**

**Find a lake**

**Enter Your Data**

**Spring materials**

- [Secchi Data Sheet](#)
- [Secchi, Temperature, D.O. Data Sheet](#)
- [Satellite Schedule 2017 \(10K\)](#)
- [Your Satellite Path](#)

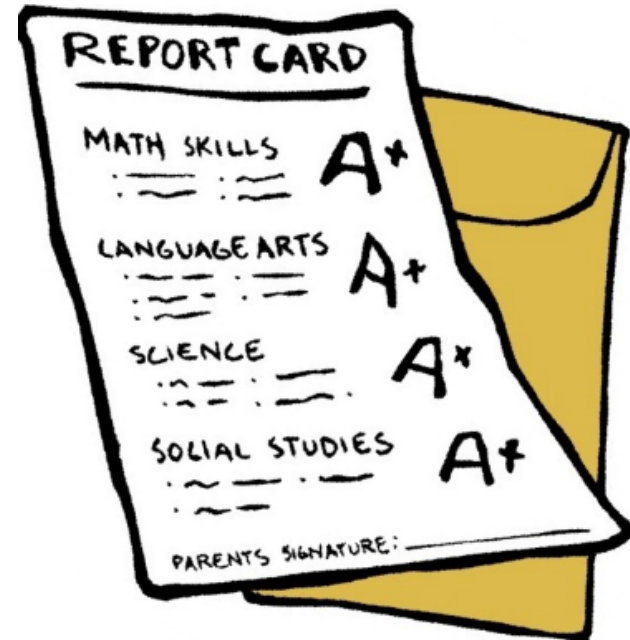
**How To**

- [Interpretive Guide to CLMN Water Quality Reports \(10K\)](#)
- [Training Resources & Manuals \(50K DNR\)](#)
- [How to Get a User ID \(10K\)](#)
- [How to Enter Data Online \(10K\)](#)

## Lake Ranking

Focused strategy to work planning

- Protection-based
- Threatened
- Remediation-based





# Public Availability

Posted on Vilas County Land & Water website

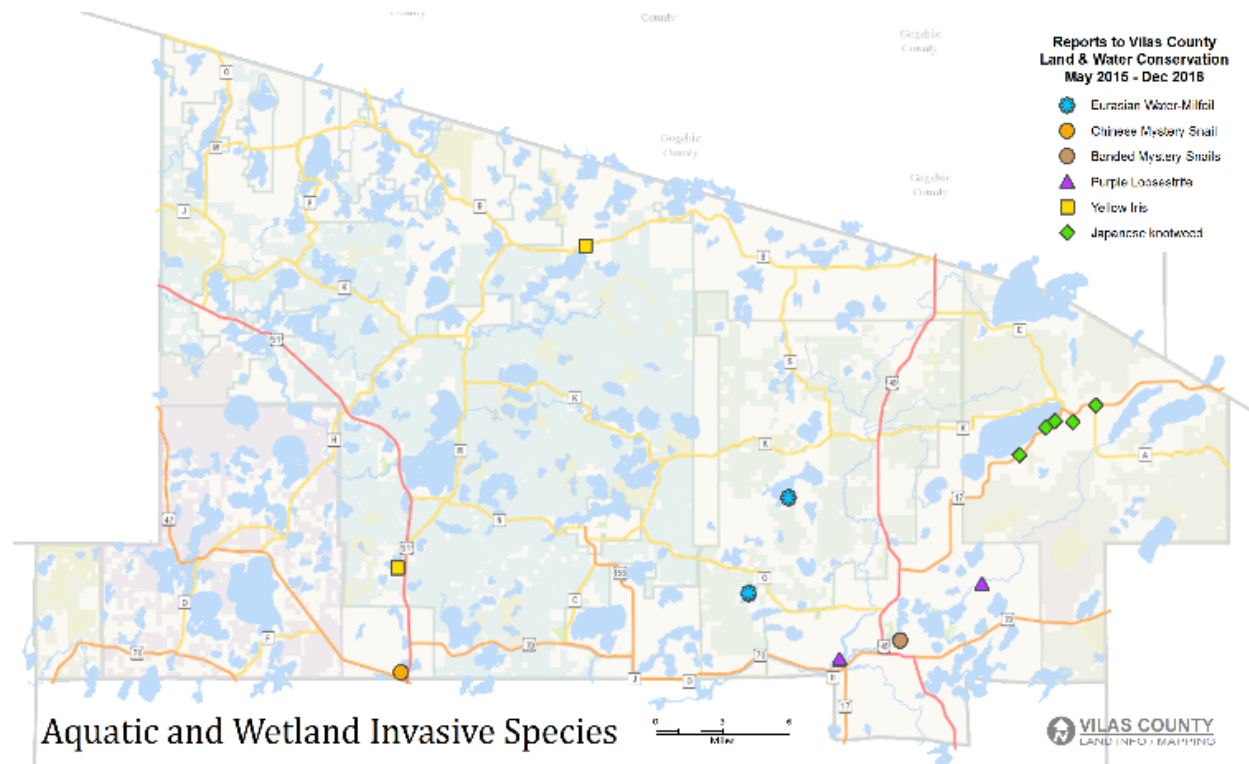




# AIS Monitoring

# Volunteer Initiated Invasive Species Finds 2015-2016

- 6 new AIS reports
  - 2 Eurasian Water Milfoil
  - 2 Purple loosestrife
  - 2 Yellow Iris
- 3 new TIS reports
  - Garlic Mustard





We Need You!





## Vilas County Land & Water

- Water Quality through CLMN
- AIS Monitoring
- TIS Control
- Clean Boats Clean Water
- Purple Loosestrife Biocontrol





Volunteer! ...Please...

Cathy Higley

Vilas County Land &  
Water Conservation

330 Court St.

Eagle River, WI 54521

715-479-3738

[cahigl@co.vilas.wi.us](mailto:cahigl@co.vilas.wi.us)