

The background of the slide is a photograph of watermilfoil plants in a lake. The plants are green and have feathery, needle-like leaves. The water is a murky green color. The text is overlaid on this image.

Porters Lake Eurasian Watermilfoil Monitoring and Management

Skip Hansen, Porters Lake Mgmt. District

Dick Hansen, Porters Lake Mgmt. District

Paul Skawinski, UW-Extension Lakes

Brenton Butterfield, Onterra, LLC

Porters Lake Facts

3 miles NE of Wautoma, WI

16 feet deep

76 acres

Hard-water seepage lake

Drained by one outlet in NE corner

Marl sediments, except SW and NE (organic muck)

Porters Lake Facts

- Impressive aquatic plant diversity (50+ species known from various surveys)
- Small purple bladderwort (*Utricularia resupinata*)
WI **Special Concern** species
- Robbins' spikerush (*Eleocharis robbinsii*)
WI **Special Concern** species
- Freshwater sponges common



Porters Lake



Porters Lake



Public boat landing





PORTERS LAKE

Boat Launch ONLY No Camping, Picnics, or Swimming

NO WAKE

Town of Mt. Morris Ordinance 2-1010

Respect the natural beauty of this lake.
All lake waters are NOT the same.
Please do NOT bring in invasive plant or animal species.

CURLYLEAF PONDWEED



Waxy leaves with fine toothed edges

EURASIAN WATER MILFOIL



1-2 pairs of leaflets

BEFORE LAUNCHING

- INSPECT & REMOVE** plants & mud
- DRAIN WATER** from boat/motor away from lake
- USE NEW BAIT** from licensed bait dealers



BEFORE LEAVING

- REMOVE PLANTS & MUD**
- DISPOSE OF UNUSED BAIT**
- DRAIN WATER**
- ICE YOUR CATCH**

For Violations Contact DNR 800-936-7463

For NO WAKE Violations Contact Sheriffs Dept. 920-787-3321

HELP...
Prevent the Spread of Aquatic Exotic Plants and Animals

WATERCRAFT LAUNCHING: 887042

1. Inspect your boat for plants and animals.
2. Drain your boat of water.
3. Clean your boat with a brush and water.
4. Dispose of any plants or animals in a trash can.

WATERCRAFT STORAGE: 887042

1. Inspect your boat for plants and animals.
2. Drain your boat of water.
3. Clean your boat with a brush and water.
4. Dispose of any plants or animals in a trash can.

Porter's Lake

**CLEAN BOATS
CLEAN WATERS**

Volunteer Service
Here to Help Boaters

Pre-2012 AIS Management

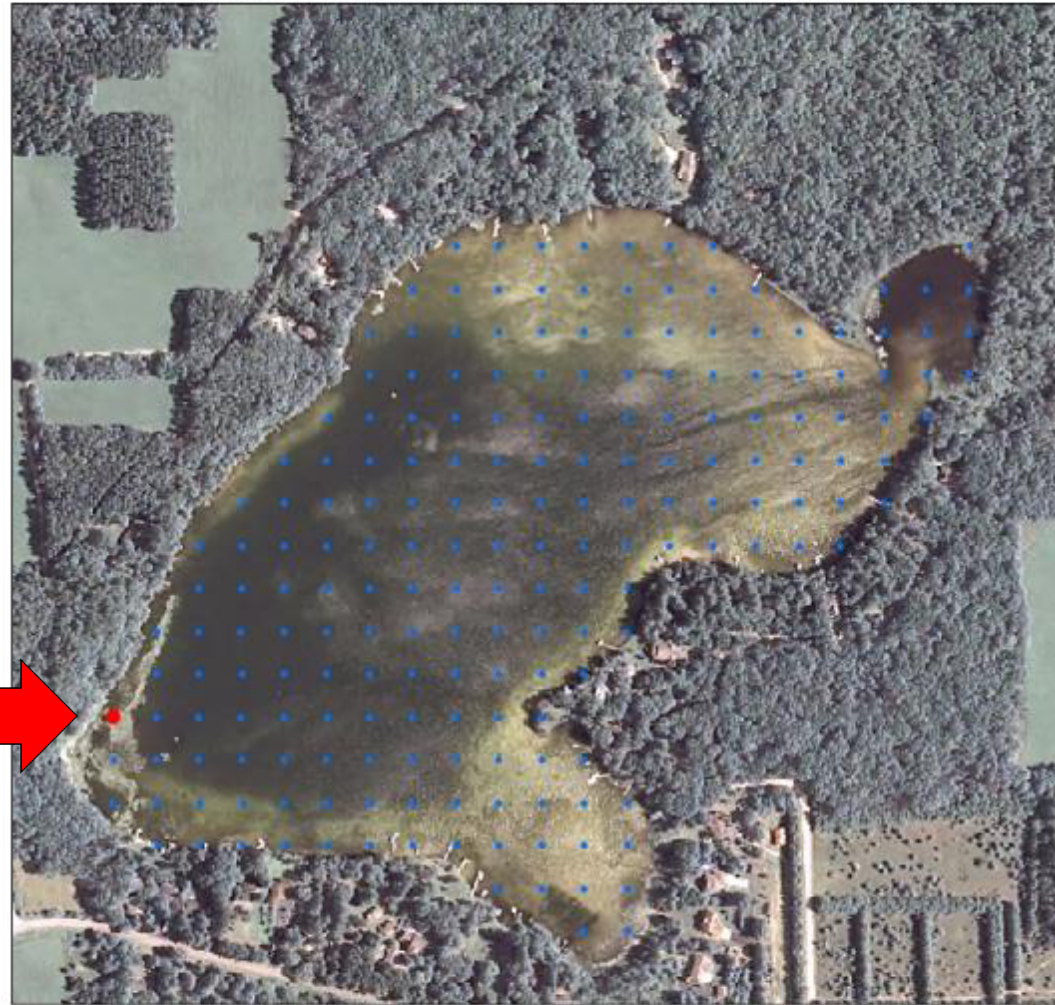
Purple loosestrife beetle rearing

Clean Boats, Clean Waters watercraft inspectors

Porters Lake 2012 Aquatic Plant Survey:
Eurasian water-milfoil (*Myriophyllum spicatum*)

**EWM
Detected**

June 23rd,
2012



0 0.025 0.05 0.1 0.15 0.2
Miles

Occurrence of Eurasian water-milfoil
(*Myriophyllum spicatum*)



- 0
- 1



EWM Targeted Visual Survey 8/23/12



Manual Removal of EWM

Snorkeling



Manual Removal of EWM

Rafts



Wading



Manual Removal of EWM

“Manual removal of EWM” tutorial free on YouTube
Search “**EWM manual removal**”

<https://www.youtube.com/watch?v=CfsEDyAwQP4>

9:00 – 11:15

EWM Targeted Visual Survey 8/23/12



EWM Targeted Visual Survey 9/21/12



EWM Targeted Visual Survey 9/21/12



Emergency District Meeting - Dec. 2012

Meeting called to discuss options to target EWM

Porters Lake District

Golden Sands RC&D



Community residents

Onterra, LLC

Emergency District Meeting - Dec. 2012

Meeting called to discuss options to target EWM

Consensus:

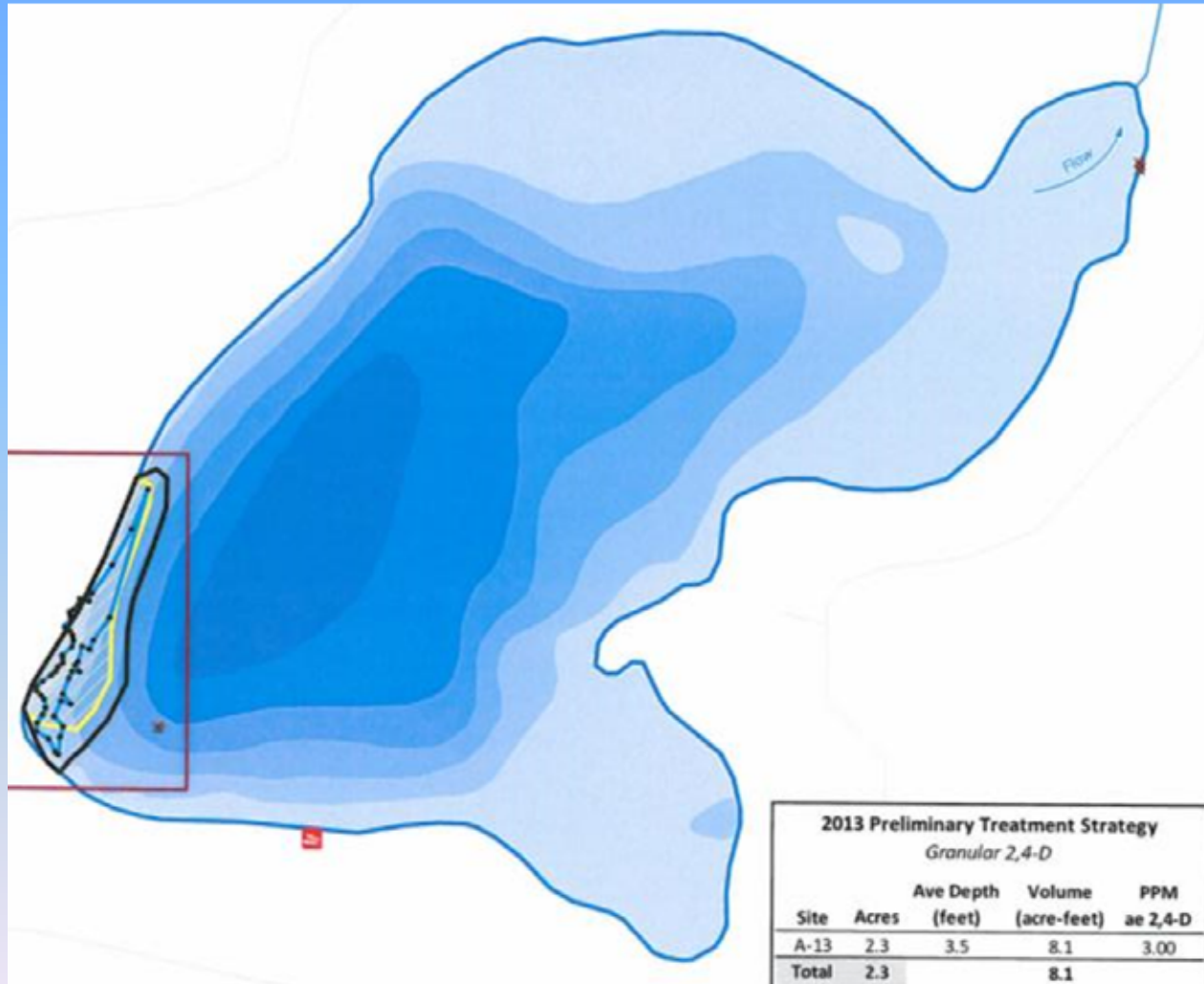
Apply for WDNR Rapid Response Grant

Granular 2,4-D application in spring 2013

Manually remove “leftovers”

Intense monitoring and continued removal as necessary

Spring 2013 Treatment Map



Granular 2,4-D application – May 15th, 2013



Granular 2,4-D application – May 15th, 2013

Results

Treatment was effective at killing nearly all remaining EWM

A few plants remained and were removed by hand in June



Granular 2,4-D application – May 15th, 2013

Results

Treatment had minor effect on some natives

Additional native species found in area previously dominated by EWM



Bullhead pond lily



Braun's stonewort

June 2013 – October 2015

Frequent monitoring of treatment area and hand-pulling areas to search for remaining EWM.

2015 Efforts

AIS Early Detection survey (WDNR) – no EWM

Volunteer AIS monitoring via kayaks (PLMD) – no EWM

Volunteer AIS monitoring via SCUBA (PLMD) – no EWM

PI aquatic plant survey (GS RC&D, UWEX) – no EWM

Meander surveys (2) (Onterra) – No EWM

October 27, 2015



Small # of EWM found within 2013 treatment area

In Summary

EWM is putting up a good fight, but is losing.

Integrated management and vigilant monitoring have been extremely successful.

Additional species have shown up in the previously EWM-dominated areas, increasing competition.

Monitoring will continue in 2016 (and manual removal, if needed).

Questions?

