

A program of the



SIGURD OLSON
ENVIRONMENTAL INSTITUTE

Erica LeMoine
LoonWatch Coordinator

Email: loonwatch@northland.edu
www.northland.edu/loonwatch

Education • Monitoring • Research

LoonWatch Mission

Engage, educate and connect students and citizens with resource professionals.

Education • Monitoring • Research

**Wisconsin Loon
Population Survey**

Training
Workshops

**Sigurd T. Olson Loon
Research Award**

Email and
Phone Public
Questions

**Annual Lakes
Monitoring Program**

Educational
Materials

Work Study and
Interns



Website

Advisory Council

Speakers' Bureau

Newsletter

**Get the
Lead Out!**

Events

**Loon Appreciation
Week**

Common Loon



Ginger Gumm

Yellow-Billed Loon



E. Potapov - VIREO

Pacific Loon



Hank Krizman

Red-Throated Loon



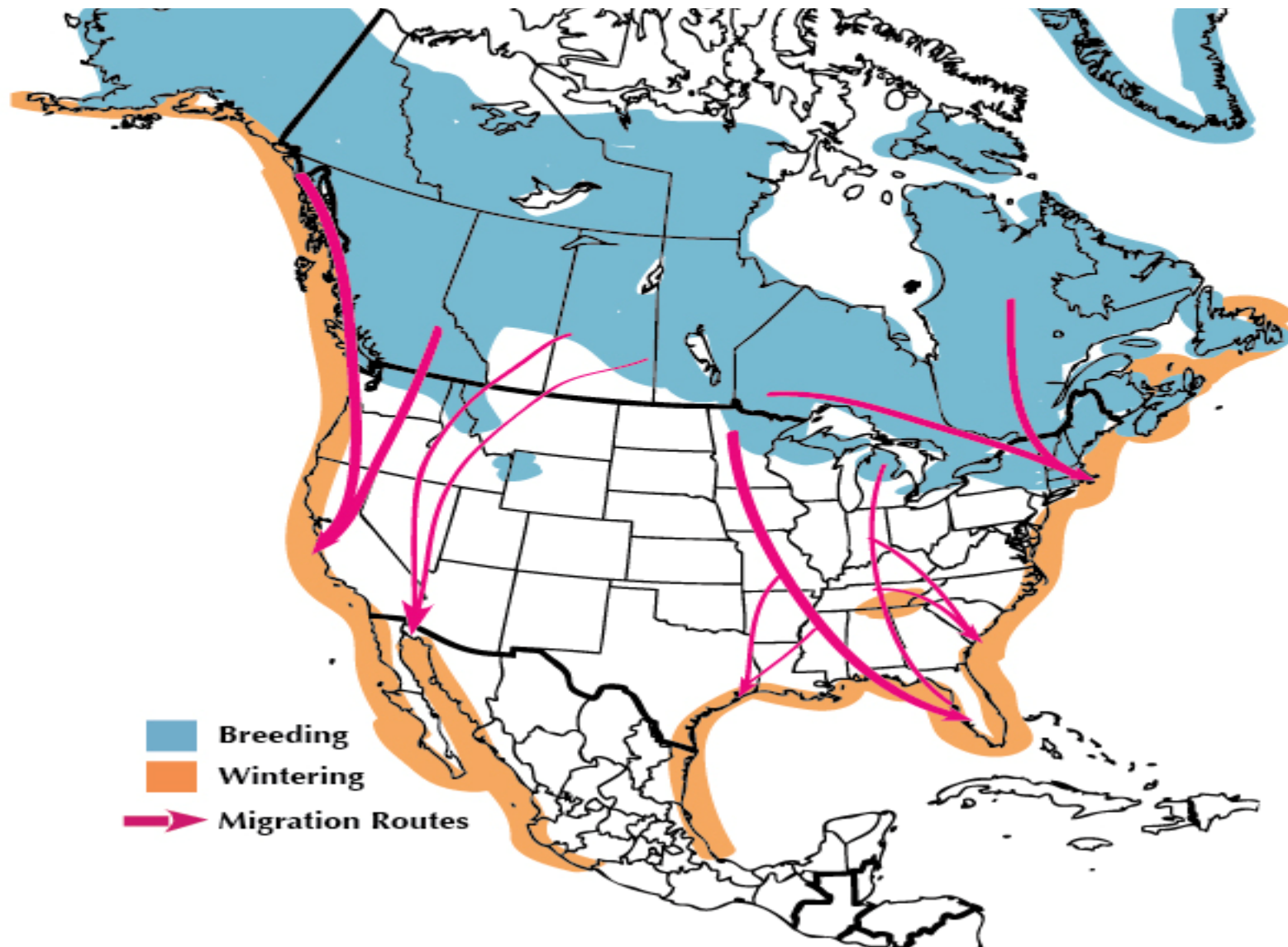
T. Vezo - VIREO

Arctic Loon



PublicDomainImages.net

Common Loon Range and Migration in North America



Spring Migration Stopover Lakes



Al Schoegler

Yodel



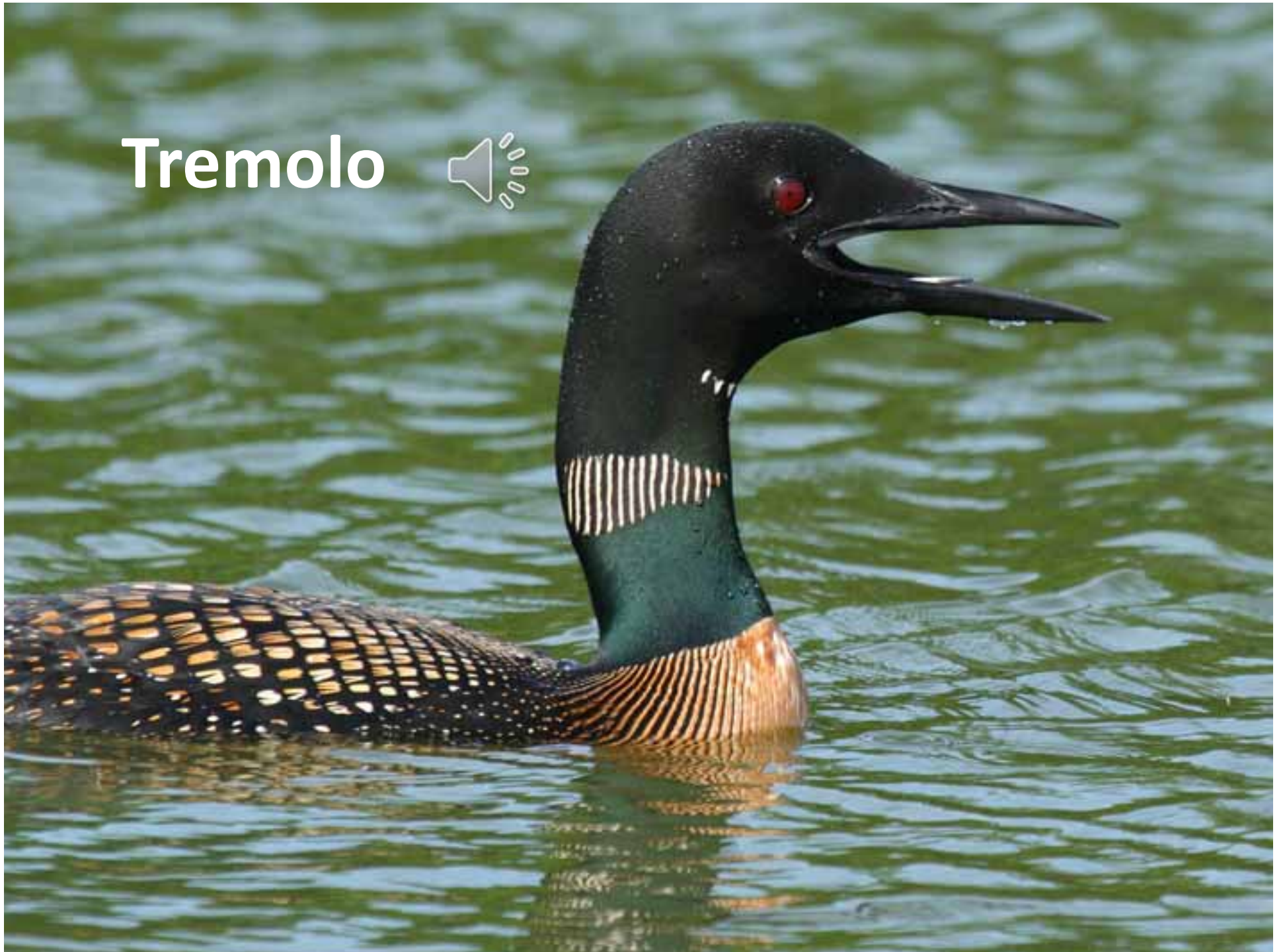
Gregory Nelson

Wail



Ginger Gumm / Daniel Poleschook

Tremolo



In Flight Tremolo



Ginger Gumm / Daniel Poleschook Jr.

Hoot



Loon Calls *courtesy of Jay Meger*

David Rippon

Nesting Habitat



Nesting Habitat



Nesting Habitat



Linda Grenzer

Artificial Nesting Platforms



Sandy Gillum

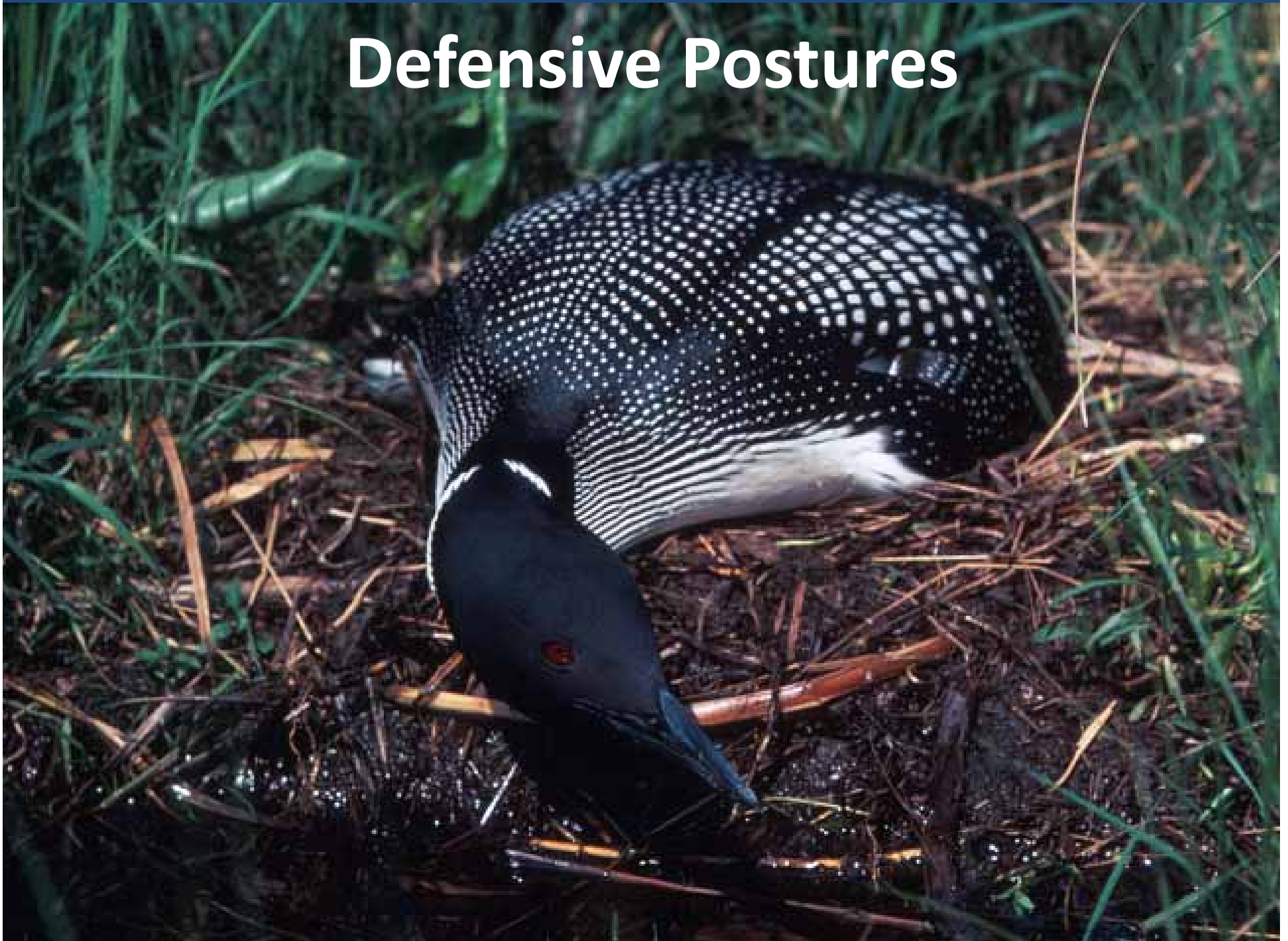
Loon Eggs



Nesting Behavior



Defensive Postures



Defensive Postures



Chick Rearing



Loon ID



© Bob Wright

2-week-old Chick

Loon ID



© Robert Scholl 2005 All Rights Reserved

6-week-old Chick

Loon ID



12-week-old Chick

Loon ID



Adult—Breeding
Plumage

Threats

- Loss of Habitat



Past and Present Common Loon Breeding Range in North America



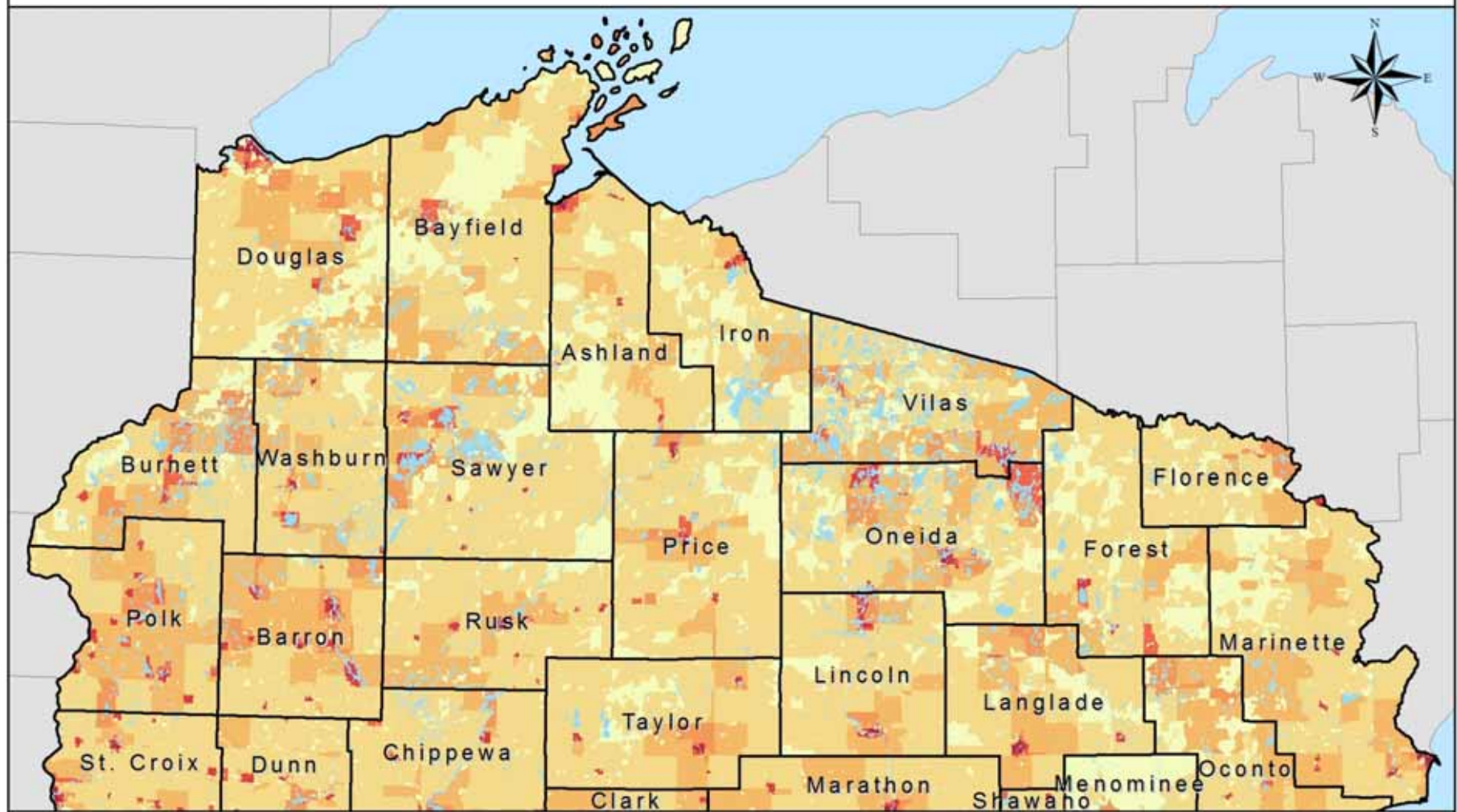
Current Range



**Historical
Southern Limit**

McIntyre 1988

Census 1940 Housing Density Northern Wisconsin



Housing Units Per Square Mile

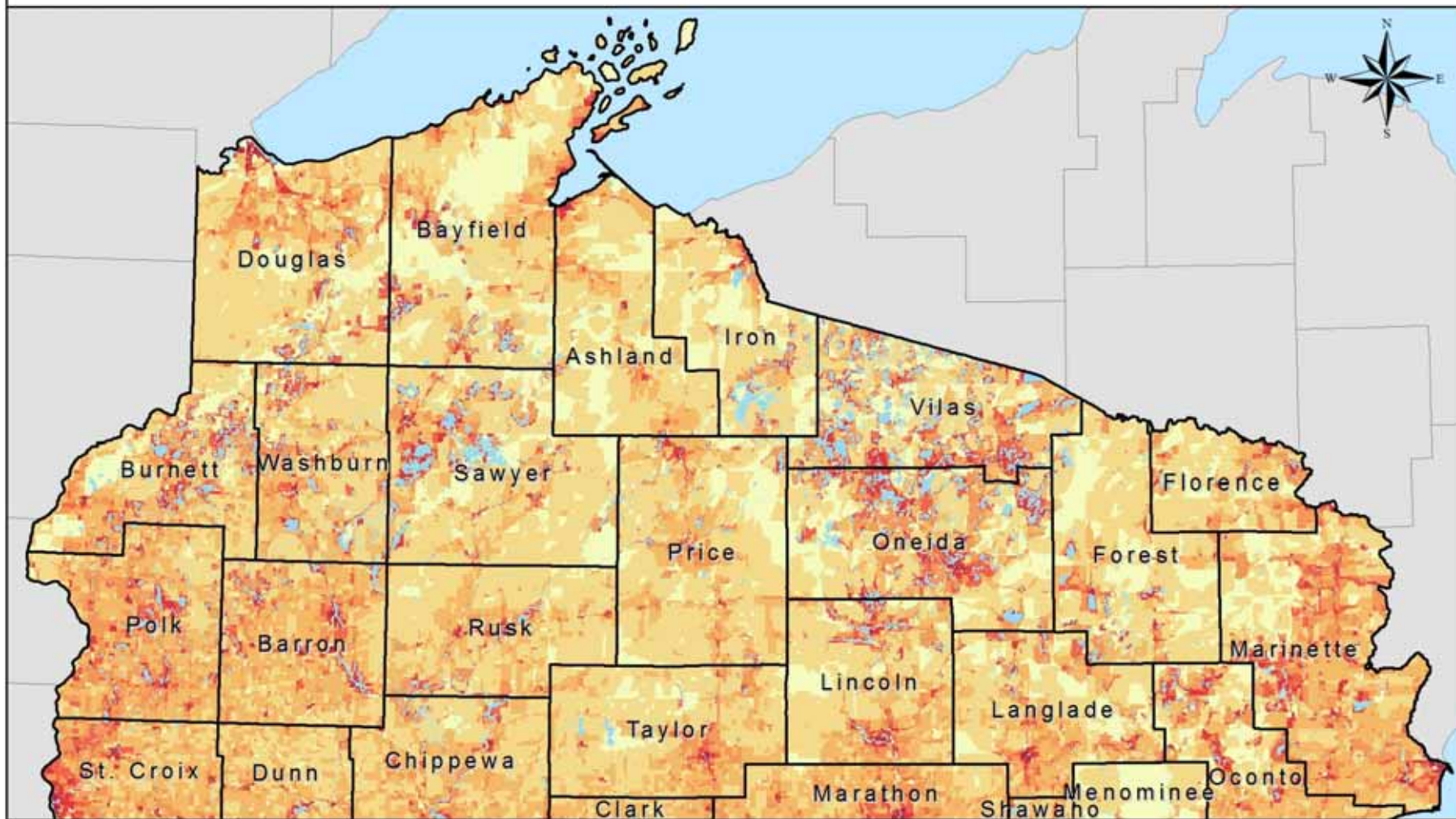


Sources:
 Roads: ArcGIS Streetmap USA, 2010
 1940 - 1980 Housing Density: US Census Partial Block Group Data
 Hammer, R. B. S. I. Stewart, R. Winkler, V. C. Radeloff,
 and P. R. Voss. 2004. Characterizing spatial and temporal
 residential density patterns across the U.S. Midwest, 1940-1990.
 Landscape and Urban Planning 69: 183-199.
<http://silvis.forest.wisc.edu/old/Library/HousingData.php>



Applied Population Laboratory
 UW Madison
<http://www.apl.wisc.edu/>

Census 1990 Housing Density Northern Wisconsin



Housing Units Per Square Mile

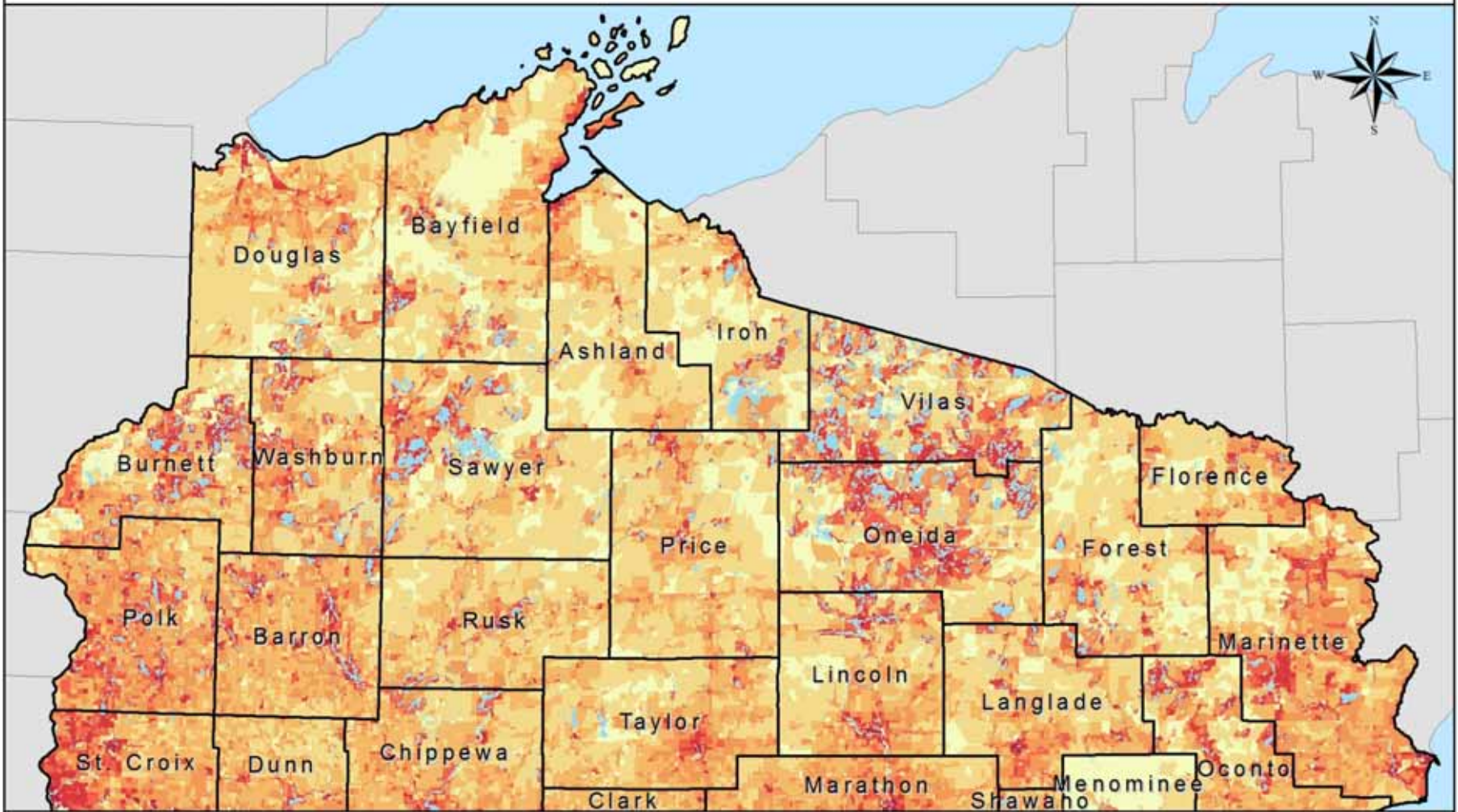


Sources:
Roads: ArcGIS Streetmap USA, 2010
1990 Housing Density: US Census Bureau (census blocks)



Applied Population Laboratory
UW Madison
<http://www.apl.wisc.edu/>

Census 2010 Housing Density Northern Wisconsin



Housing Units Per Square Mile



Sources:
Roads: ArcGIS Streetmap USA, 2010
2010 Housing Density: US Census Bureau (census blocks)

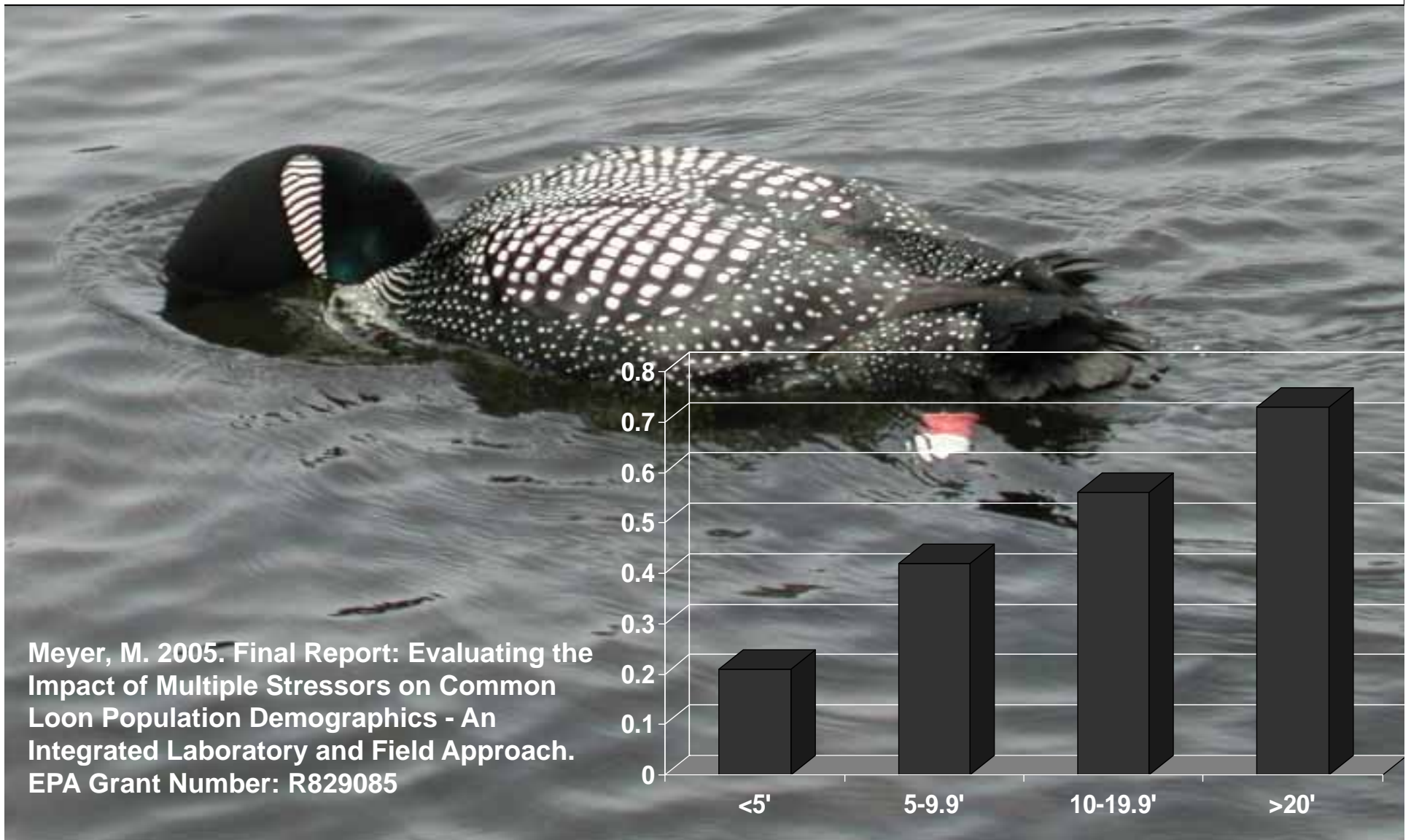


Applied Population Laboratory
UW Madison
<http://www.apl.wisc.edu/>

Threats

- Loss of Habitat
- Poor Water Quality

Wisconsin Loons More Likely Found on Lakes with Good Water Clarity

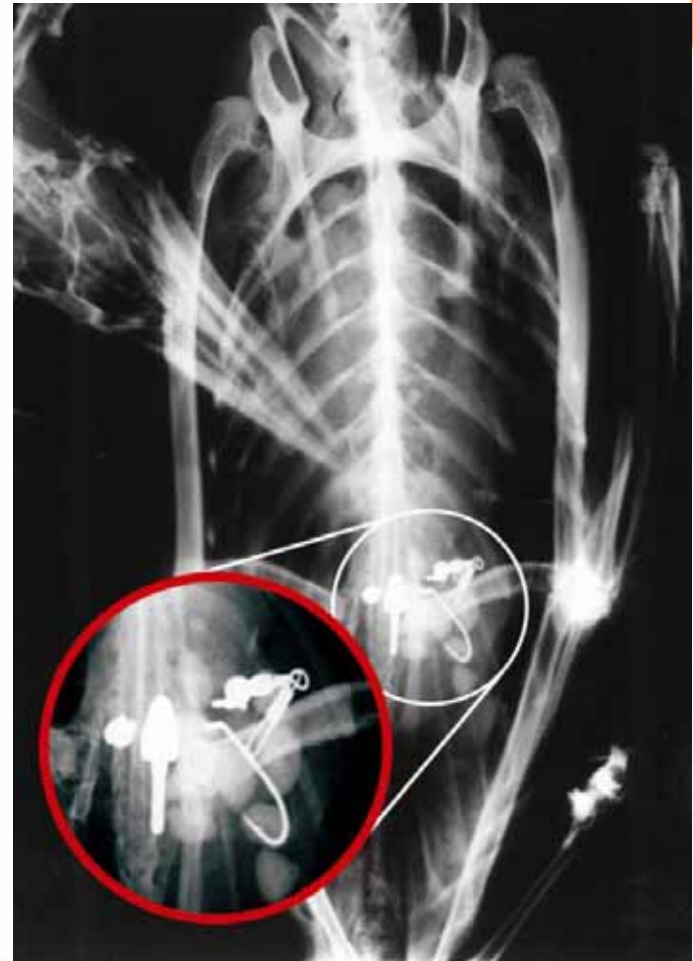


Threats

- Loss of Habitat
- Poor Water Quality
- **Toxins**

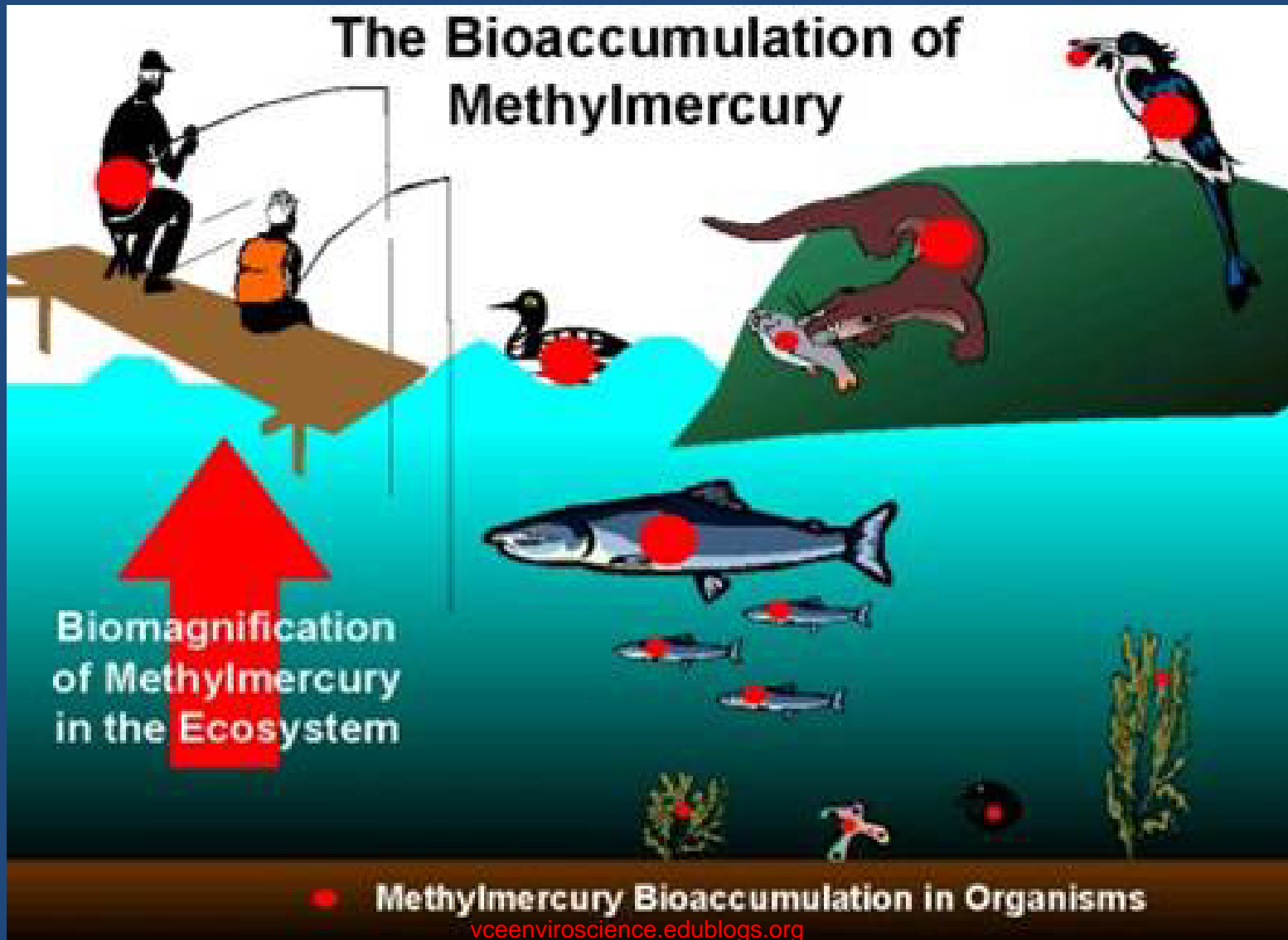
Lead Fishing Tackle

- Approximately 20% of loons succumbed to lead poisoning
- X-ray shows lead tackle in a loon's stomach



Mercury

How Do Loons Ingest Mercury?



Threats

- Loss of Habitat
- Poor Water Quality
- Toxins
- Human Disturbance

Education • Monitoring • Research

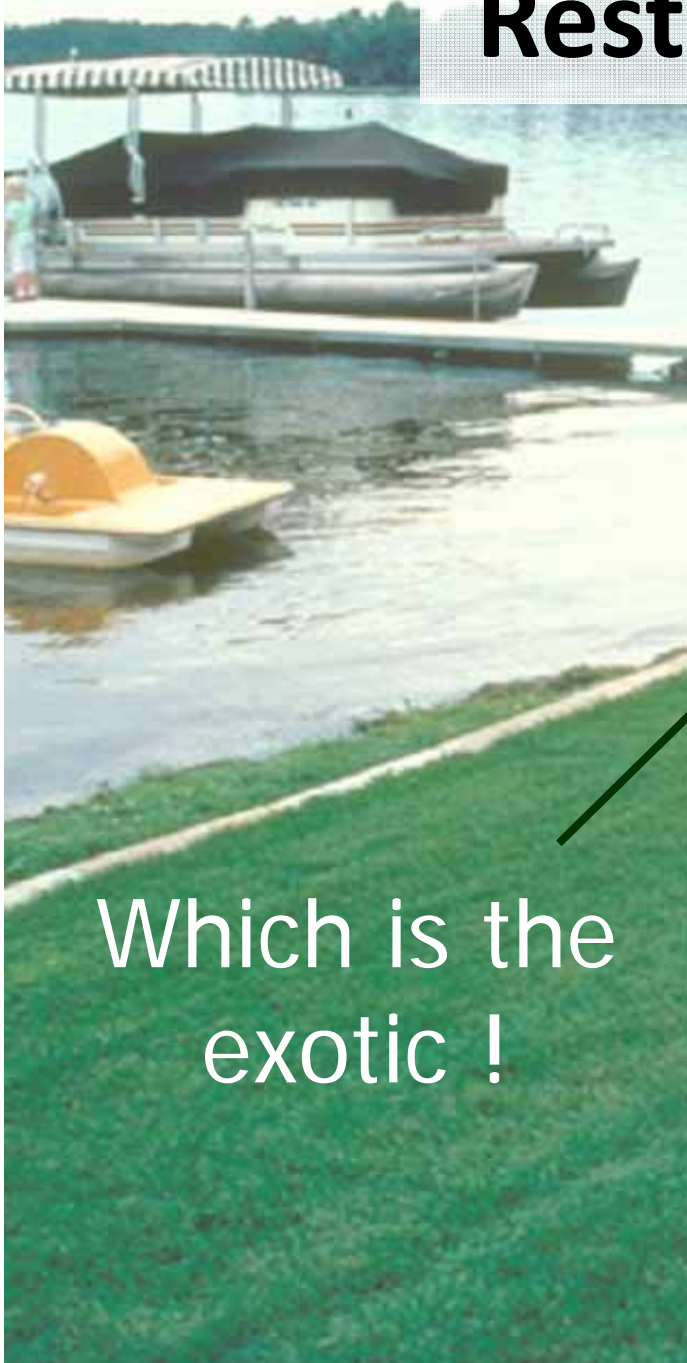


What Can Be Done to Protect Loons?

- Restore Your Shoreland to Native Plants

Education • Monitoring • Research

Restore Your Shoreland



Which is the
exotic !

Kentucky
bluegrass

switch-
grass

prairie
cordgrass

cylindric
blazing
star

What Can Be Done to Protect Loons?

- Restore Your Shoreland to Native Plants
- Build a Rain Garden and Utilize Rain Barrels

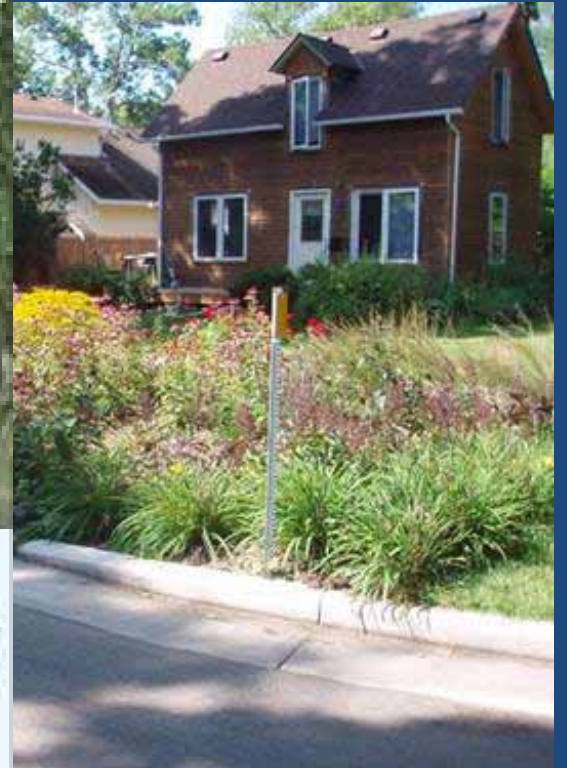
Build a Rain Garden and Utilize Rain Barrels



Project Location:
River Falls, WI



A rain barrel used to collect rooftop runoff using a gutter / downspout system



What Can Be Done to Protect Loons?

- Restore Your Shoreland to Native Plants
- Build a Rain Garden and Utilize Rain Barrels
- **Get the Lead Out!**

Get the Lead Out!

Replace your tackle with lead-free tackle



Education • Monitoring • Research

What Can Be Done to Protect Loons?

- Restore Your Shoreland to Native Plants
- Build a Rain Garden and Utilize Rain Barrels
- Get the Lead Out!
- Reduce Your Energy Consumption

Reduce Your Energy Consumption

- Walk or bike to work, store, errands
- Carpool
- Use public transportation
- Drive the posted speed limit
- Make sure your tires are properly inflated
- Purchase locally produced products

What Can Be Done to Protect Loons?

- Restore Your Shoreland to Native Plants
- Build a Rain Garden and Utilize Rain Barrels
- Get the Lead Out!
- Reduce Your Energy Consumption
- **Educate Your Fellow Lake Users**

Education • Monitoring • Research

Educate Your Fellow Lake Users

LEAD ALERT

Lead fishing tackle kills loons, eagles, swans, and other wildlife due to lead poisoning. Please use non-lead tackle when fishing this lake!





Prevent wildlife death and entanglement. Discard unwanted fishing line in a trash receptacle and lead tackle at a local hazardous waste collection site.



LOON ALERT

Help keep this lake safe for loons by staying **200** feet from:

-  loons on the water, and
-  shoreline areas used by loons.

LoonWatch 

a program of
 Sigurd Olson
 Environmental Institute



Wildlife harrassment is illegal. Please report violations to the local Department of Natural Resources office or call toll free 1-800-TIP-WDNR. For loon information write: LoonWatch, Sigurd Olson Environmental Institute, Northland College, Ashland, WI 54806 or visit our website: www.northland.edu/soei or email us at loonwatch@northland.edu.

What Can Be Done to Protect Loons?

- Restore Your Shoreland to Native Plants
- Build a Rain Garden and Utilize Rain Barrels
- Get the Lead Out!
- Reduce Your Energy Consumption
- Educate Your Fellow Lake Users
- **Contact your Local Legislators**

Education • Monitoring • Research

Contact Your Local Legislators

Your Legislators



Senator Julie M. Lassa

(D - Stevens Point)
Senate District 24
(608) 266-3123

Sen.Lassa@legis.wisconsin.gov



Representative Katrina Shankland

(D - Stevens Point)
Assembly District 71
(608) 267-9649
(888) 534-0071


Rep.Shankland@legis.wisconsin.gov

What Can Be Done to Protect Loons?

- Restore Your Shoreland to Native Plants
- Build a Rain Garden and Utilize Rain Barrels
- Get the Lead Out!
- Reduce Your Energy Consumption
- Educate Your Fellow Lake Users
- Contact Your Local Legislators
- **Support LoonWatch**

SUPPORT LOONWATCH

LoonWatch Protects Common Loons And Their Aquatic Habitats Through Education, Monitoring, And Research.

Two loons are shown swimming in water, facing each other. The loon on the left is in profile, facing right, with its head tilted down. The loon on the right is also in profile, facing left, with its head tilted down. Both loons have dark, iridescent feathers with a shimmering blue and green sheen. The water around them is dark with some lighter, rippling areas. The background is a dark, textured surface, possibly a sky or a close-up of water.

**Gifts can be made through our website:
www.northland.edu/loonwatch
or ask for a gift envelope.**