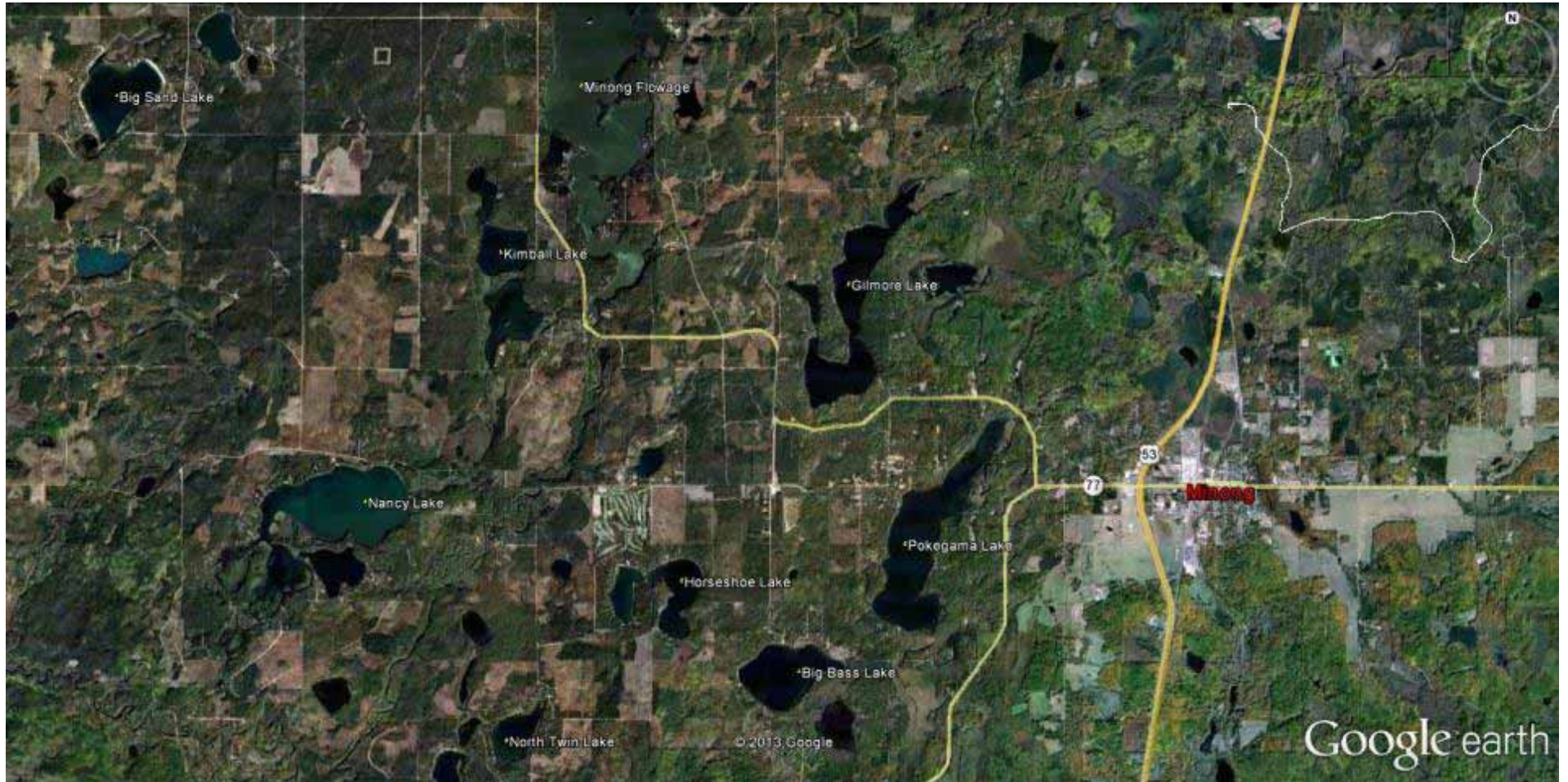
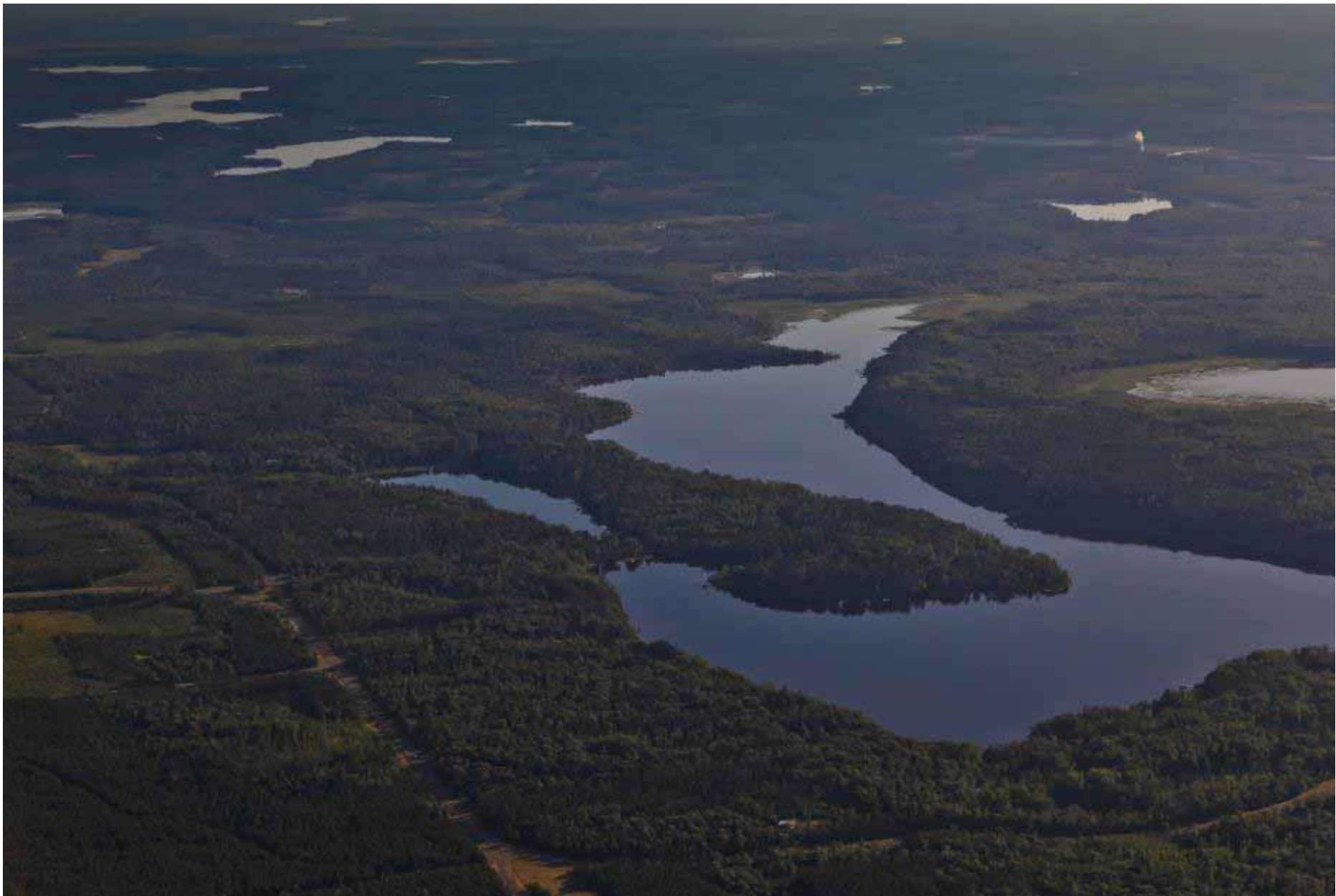


Minong Town Lakes Committee (MTLC)









Town Description

- Very rural nature (1000 residents)
- Located near Spooner, Hayward, Minneapolis
- 28 named lakes, range in size from 50 -1800 acres. Long history of recreational use
- 2/3 revenue derived from property tax
- 80% Tax income dependent on lakeshore properties
- Most of the Town revenue is spent on road maintenance and upgrade.
- Very little money or effort spent on protecting or enhancing the Town's major source of income.

Reasons for a Town Lake Committee

- Ad Hoc committee to advise the town board on lake-related issues.
- Human impact acceleration.
- Represent all lakes in the town including those without associations. (collaboration)
- Charter includes:
 - Education-related to resource preservation
 - Water Quality maintenance and/or enhancement
 - Prevention/control of AIS
 - Watershed and shoreline preservation

MTLC History

- Committee formed by Sam Lewis 2008
- Originally approximately 12 members* with very diverse backgrounds
 - Scientists
 - Education
 - Religion
 - Business
 - Government

*All members had a long history with the area.

Chronology of Accomplishments

2008 we formulated a Charter and Committee By-Laws

Established recognition by the Town board of supervisors. Received approval for a small operational budget dependent on receiving matching funds.

Established priorities of what we hope to accomplish and general timetables

2009

Sponsored Educational Fair for residents of the Town of Minong and surrounding area

- Free Fair funded by Grants and fund raising contributions
- Nearly 50 volunteers mobilized to help
- Presentations and activities were designed to be of interest to a variety of age groups.
- Very strong attendance, approximately 800 – 1000
- Attendance by both lake and non-lake residents

Lake Topic Presentations



Lake History



Vender Support



Crafts



Free Food



Kids activities



Fun



2010 Pontoon Boat Educational Field Trip



2010 Launch Ramp Improvements





2011 Lake Aquatic Plant Surveys



MTLC Aquatic Plant Surveys 2011

Lake	Big Bass	Kimball	Pokegama	Big Sand	N. Twin	Gilmore	Horse shoe	Nancy	Northern WI average
Surface acres	203	263	465	210	113	389	194	772	
Ave Depth (ft)	15	(5)(31)(6))	10	6	6	16	7		
Max Depth (ft)	27	77	23	9	20	36	21	38	
Secchi Clarity (ft)	12	18	10	5	5	9	8	10	
# of index plant Species	38	50	46	37	36	52	41	54	
Coef of Conservatism	7.1	6.6	6.2	7.1	7	6.8	7.4	5.6	6.7
Floristic Quality Index (FQI)	41.8	44.3	40.7	40	39.8	49	35,4	44.6	24.3
Species ranked 9/10	9	12	5	10	11	9	8	10	
Species of special concern	Vasey Pondweed	Littorella	Littorella Wild rice	Sm purple Bladder wort	Littorella Sm purple Bladder wort	Wild Rice		Robbin's Spikerush	

Aquatic Plant Survey Results

- Very Diverse Plant populations
- No additional invasive species found
- Litorella, considered rare in WI was common in the survey
- Bad Shoreline Mgt practices reflected in micro aquatic plant habitats
- Some lakes reflected extended drought conditions

2011 Second Educationl Fair



Same as the first except the weather



2012 Educational Presentations



Lake Survey Training



2012

CBCW grant development

- Development of Town-wide program for Clean Boats/Clean Waters inspection program
- Will replace and augment current separate lake programs
- Will increase the amount of inspection hours from 800hr/yr to 2500/yr.
- Received approval for the program from both WDNR and Town Board (\$44,000)

2013 Plans

- Manage New CBCW program beginning May 2013
- Free newsletter to be delivered to about 600 lake property residents.
- Professionally designed website to be online, Spring 2013
- Separate kids educational program

2013 Plans

- Manage New CBCW program beginning May 2013
- Free newsletter to be delivered to about 600 lake property residents.
- Professionally designed website to be online, Spring 2013
- Separate kids educational program
- Continue plant survey training

Questions?

