

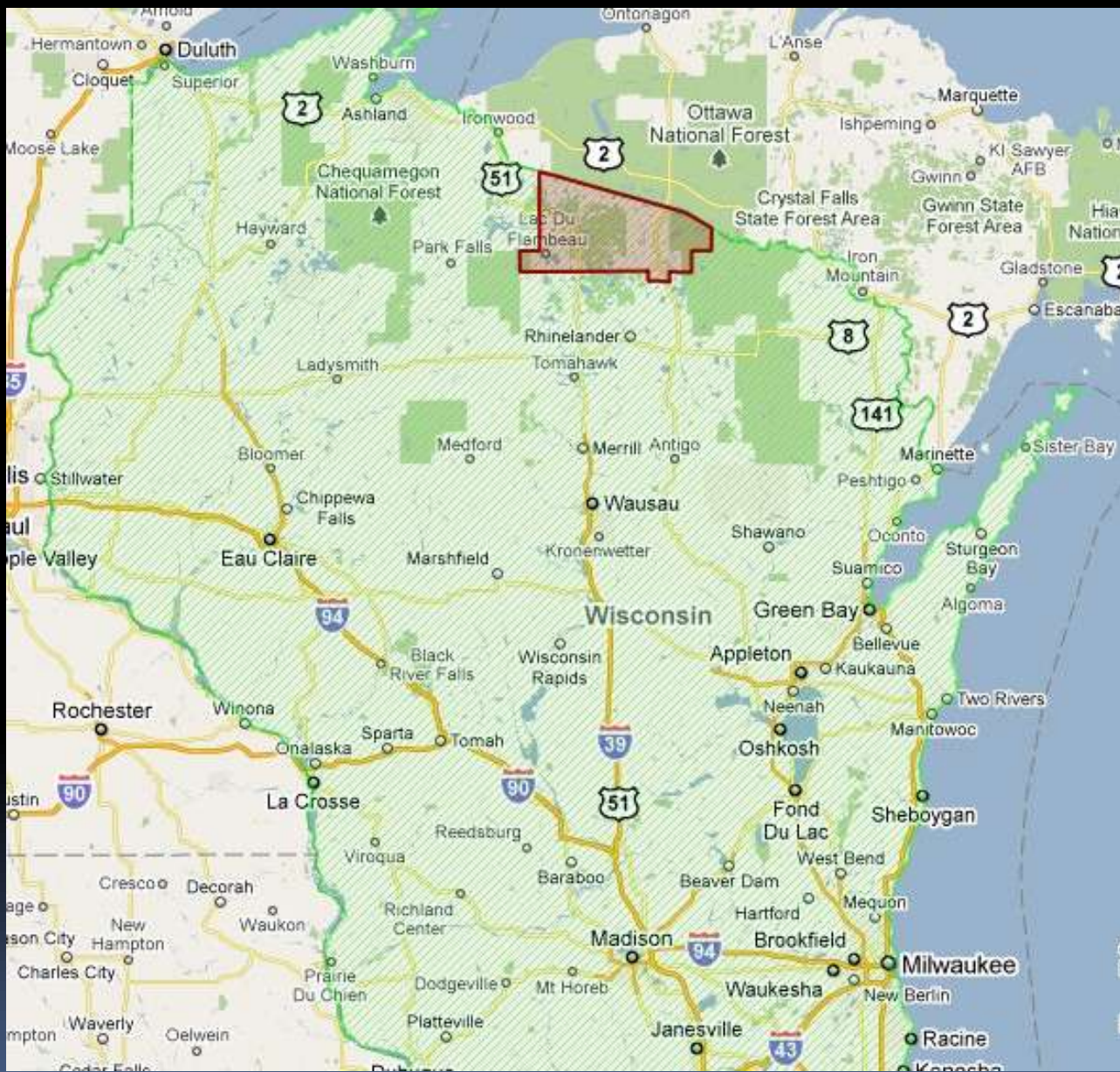
PRESQUE ISLE WILDERNESS WATERS PROGRAM

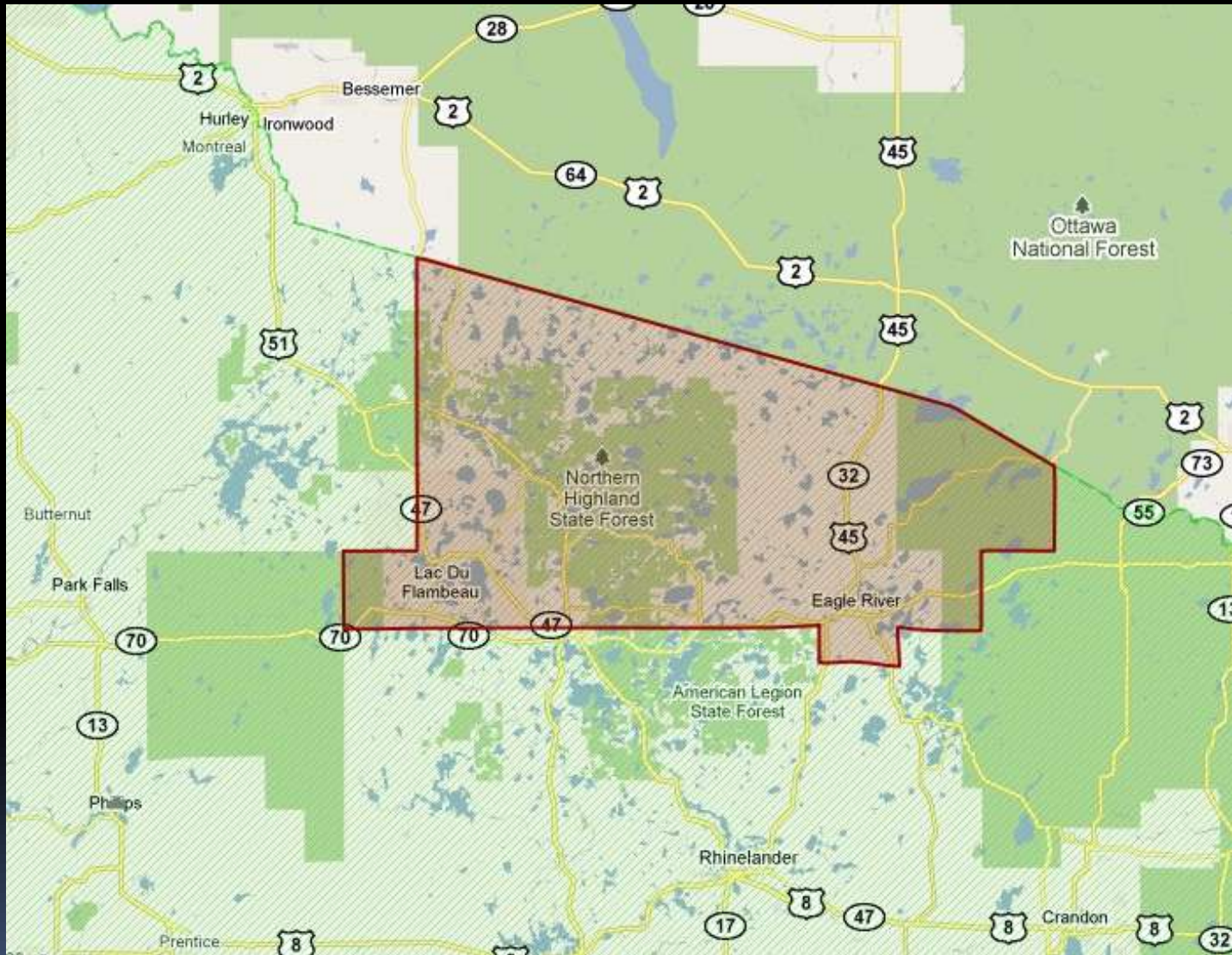


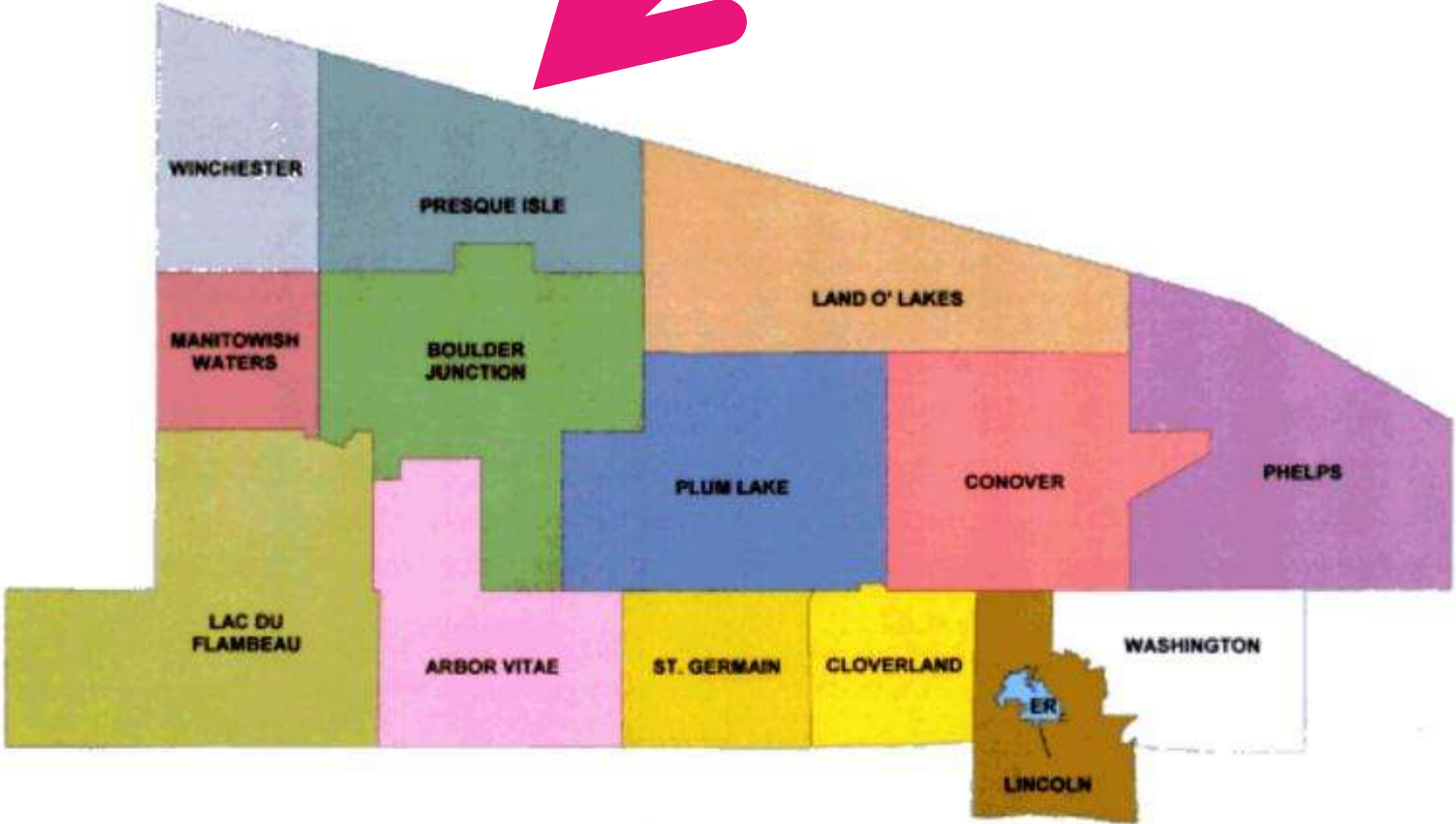
Presque Isle Town Lakes Committee
White Water Associates, Inc.
Presenter: Dean Premo, Ph.D.

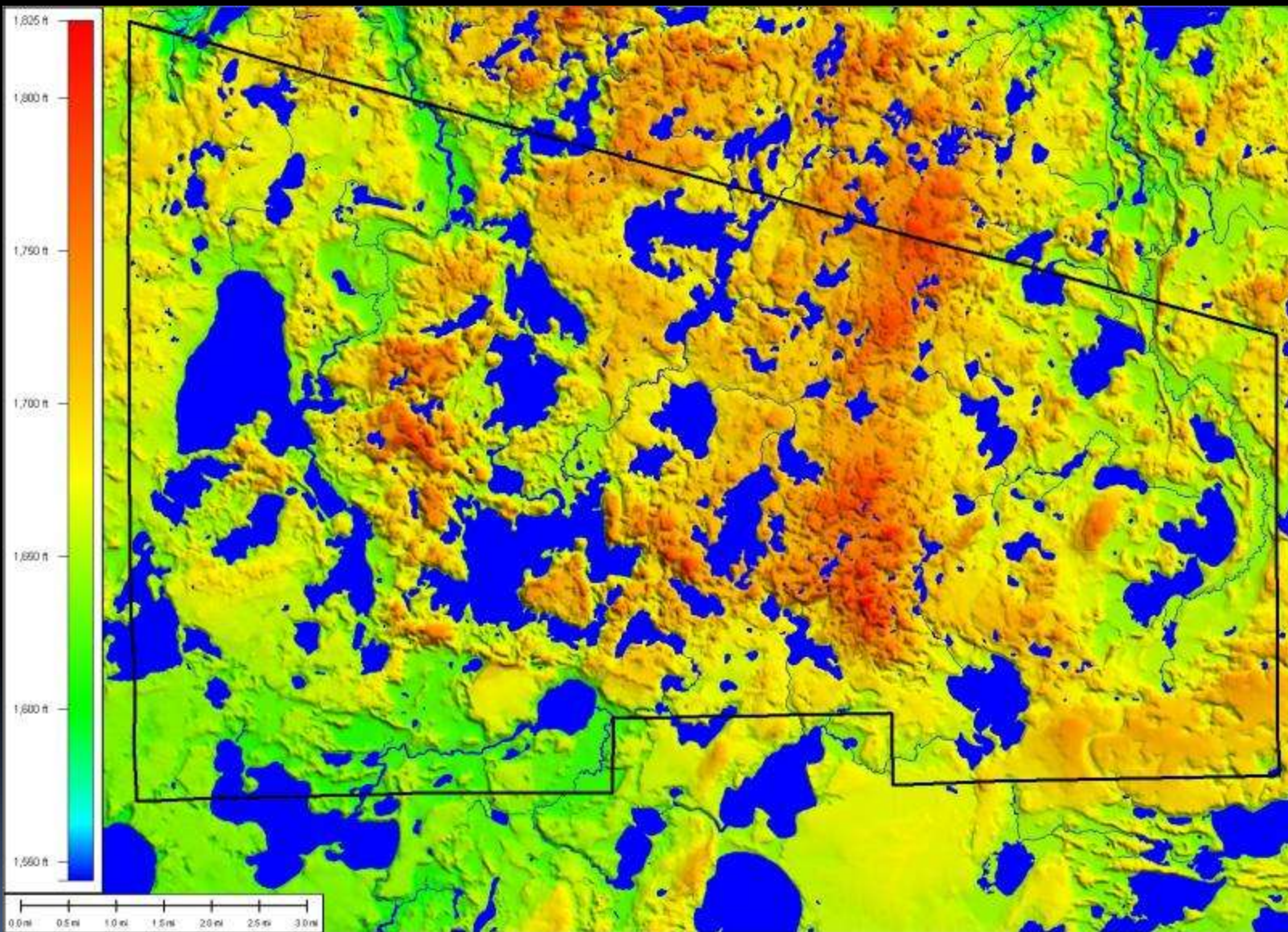
“Almost an island”



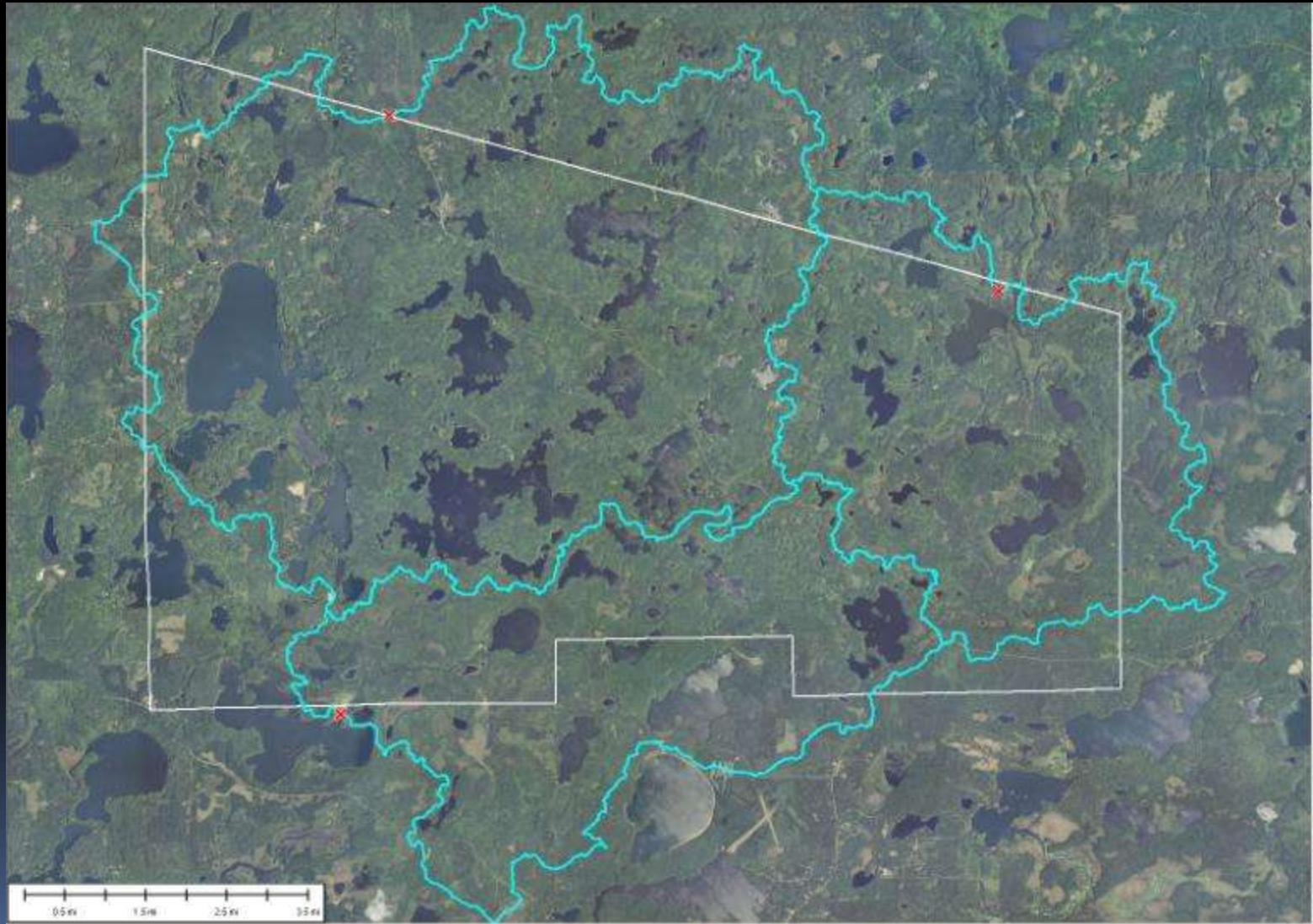


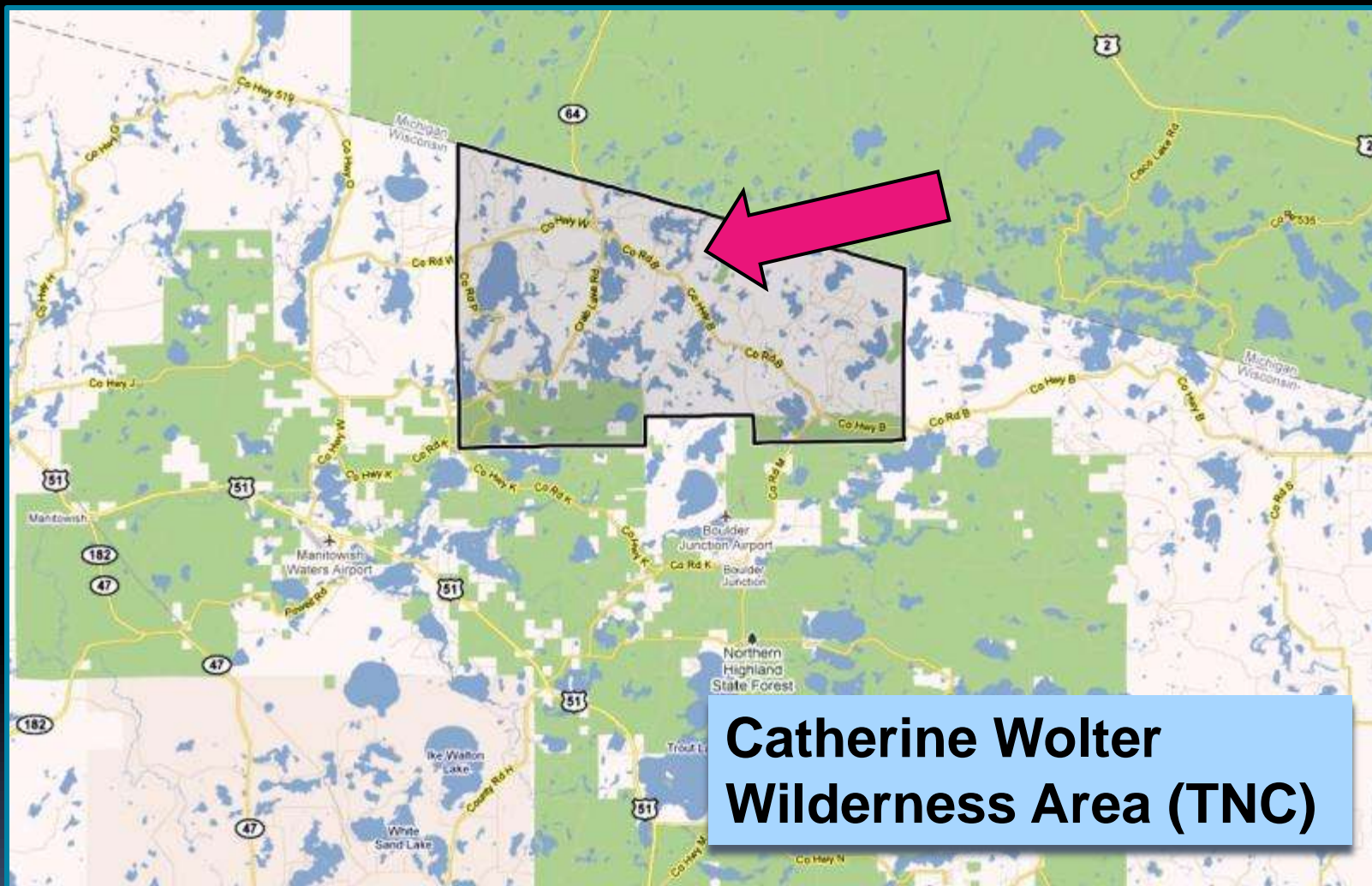




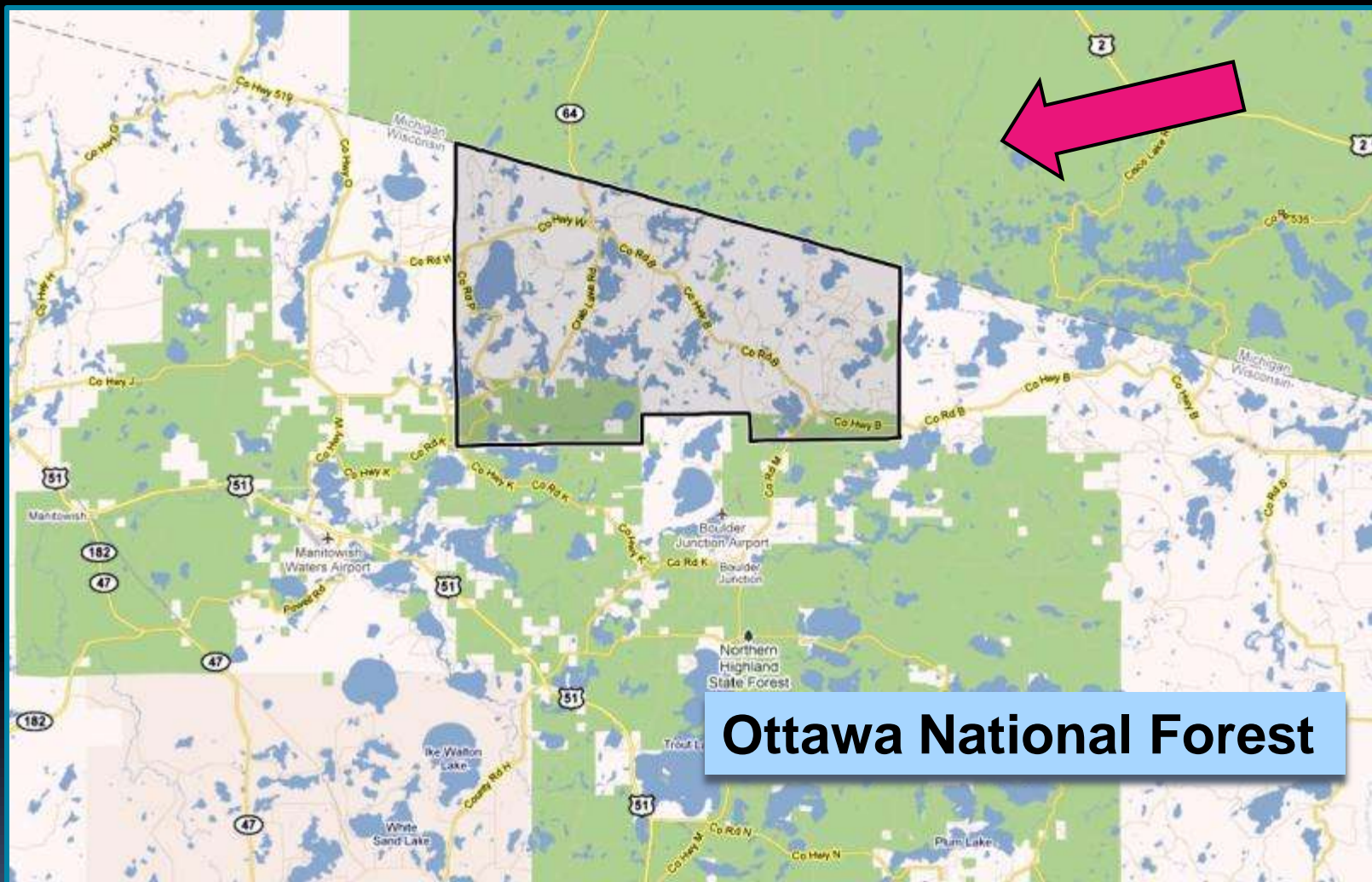


Delineating watersheds

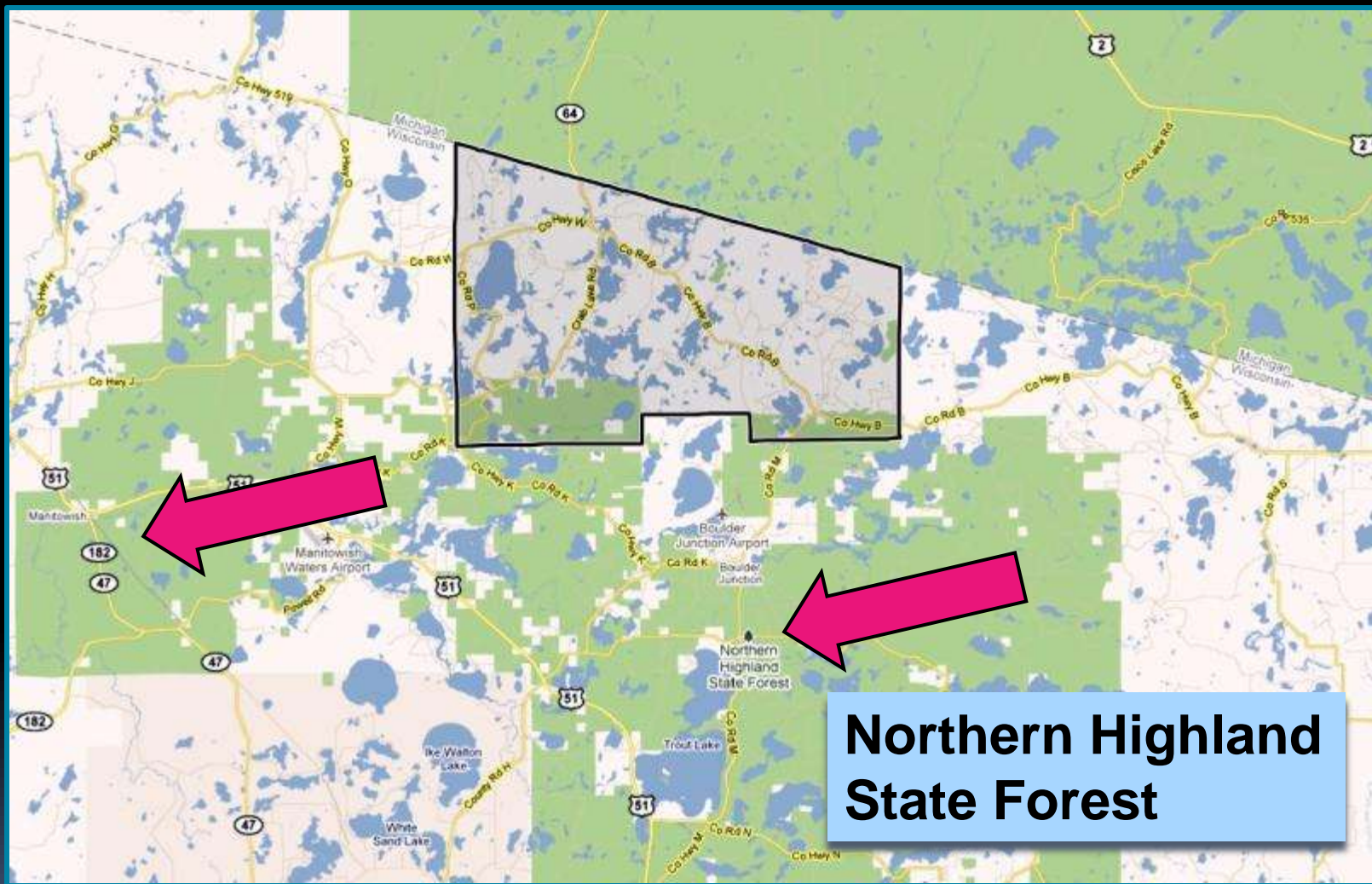




**Catherine Wolter
Wilderness Area (TNC)**



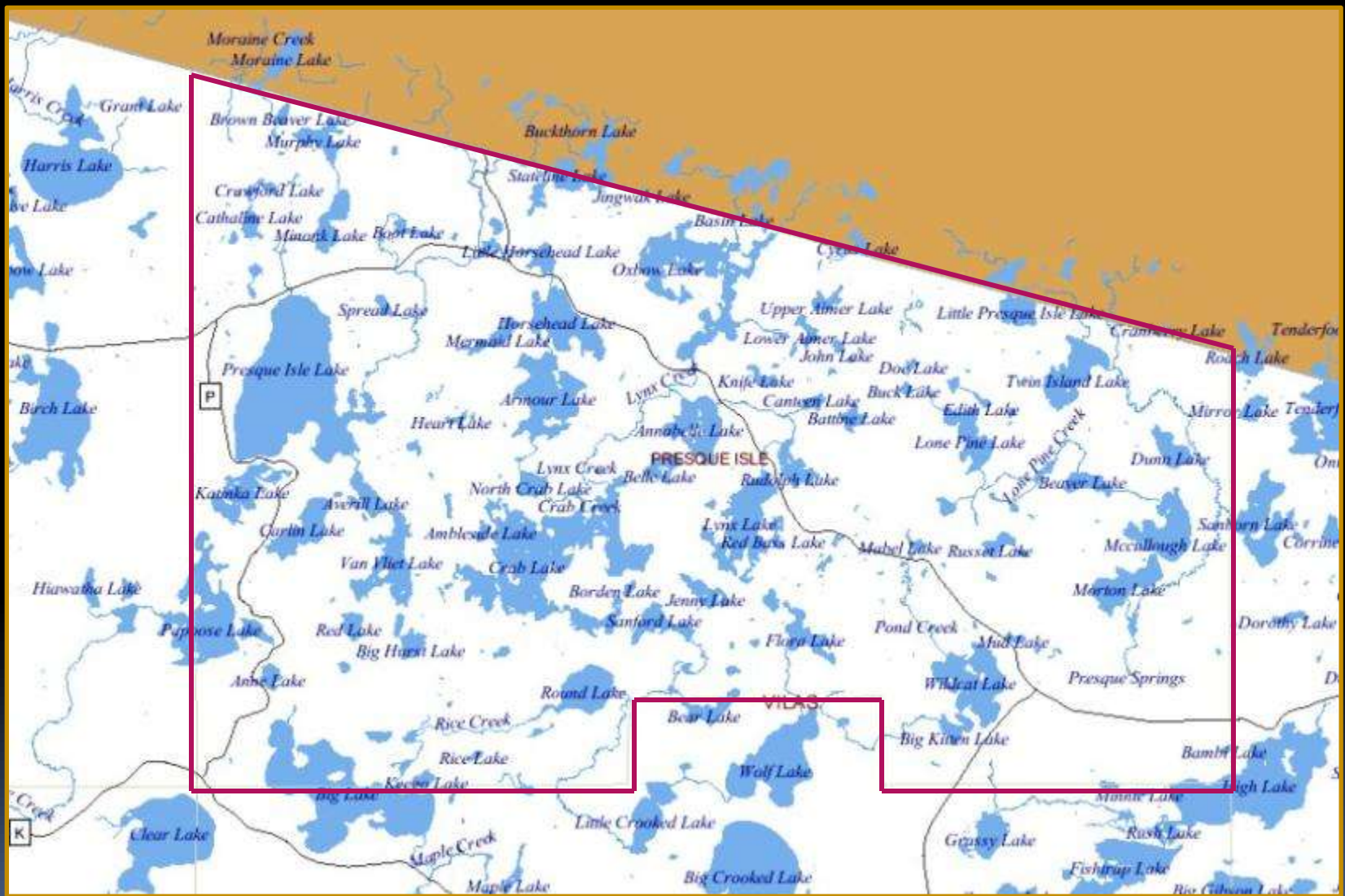
Ottawa National Forest



**Northern Highland
State Forest**



- Popular fishery
- Half day drive from major cities
- Chamber Walleye Tournament
- Lions Kid's Fishing Contest
- Bob Ellis Row Trolling Tournament
- Annual World Championship Musky Classic



Overview of presentation:

- (1) Introduction to Presque Isle Township
- (2) Presque Isle Town Lakes Committee
- (3) Aquatic Plant Surveys
- (4) Wilderness Waters Program:
Waterscape Wide Planning

Presque Isle Town Lakes Committee

- Created by the Town Board in 2005
- Purpose: learn about and address AIS concerns
- Involve Presque Isle lake associations
- 30 residents from 10 lake associations
- PITLC meets monthly on 2nd Tuesday
(bimonthly the winter months)

A Practical Mission for PITLC:

“Our mission is to learn all we can about invasive species, to apply for as much grant money as the DNR will give us for projects, to find out what is and is not in our lakes, to monitor our lakes, to inform the public that we are worried, and, should we find invasive species in any of our lakes, to undertake treatment plans while the invasion is still in its infancy.”

PITLC activities and accomplishments:

- (1) Education
- (2) Monitoring
- (3) Plant survey
- (4) Planning & Preparation

Education: Learning about AIS



Education: Information kiosks



Education: Clean boats – clean waters



Education: more activities

- Labels on bait containers
- Booth at the Country Fair
- Fishing tournaments handouts
- Articles to newspapers

Education: Children



Monitoring: CLPOA Ecology Committee



Monitoring: Plant identification



Monitoring: Adopt-a-shoreline



Monitoring: CLPOA CB-CW

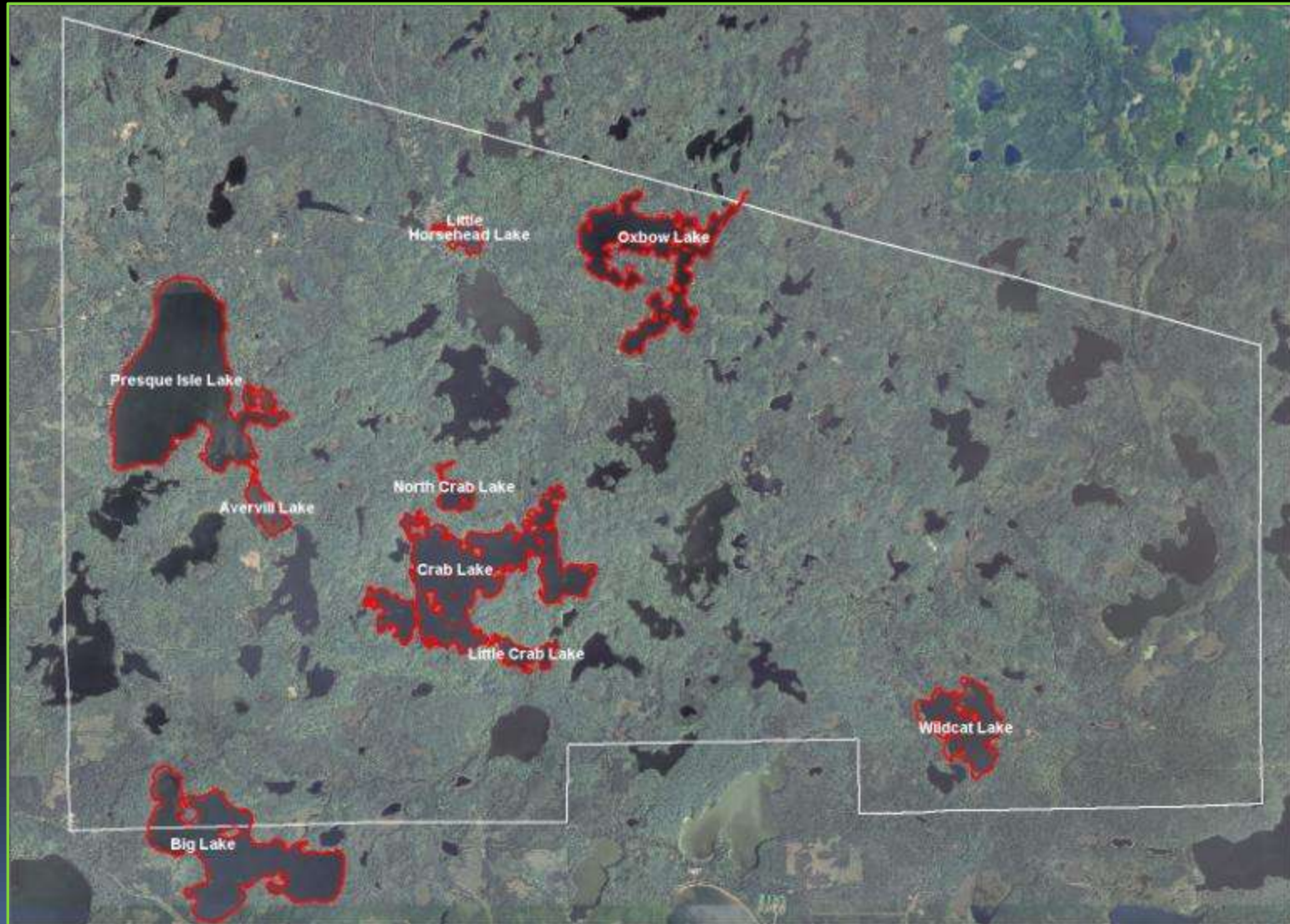


Aquatic Plant Surveys

Point-intercept surveys



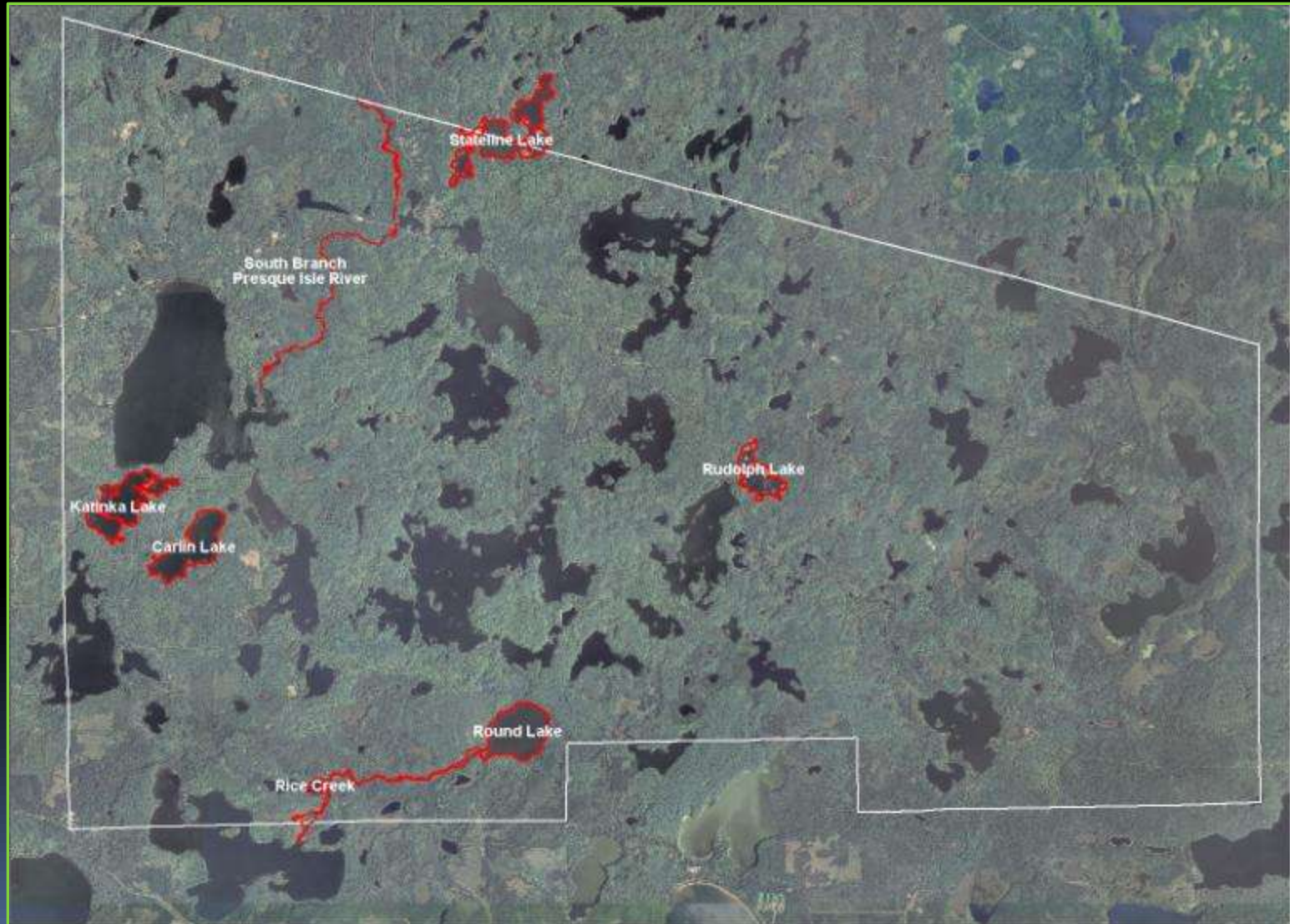
2007 Point-intercept plant surveys



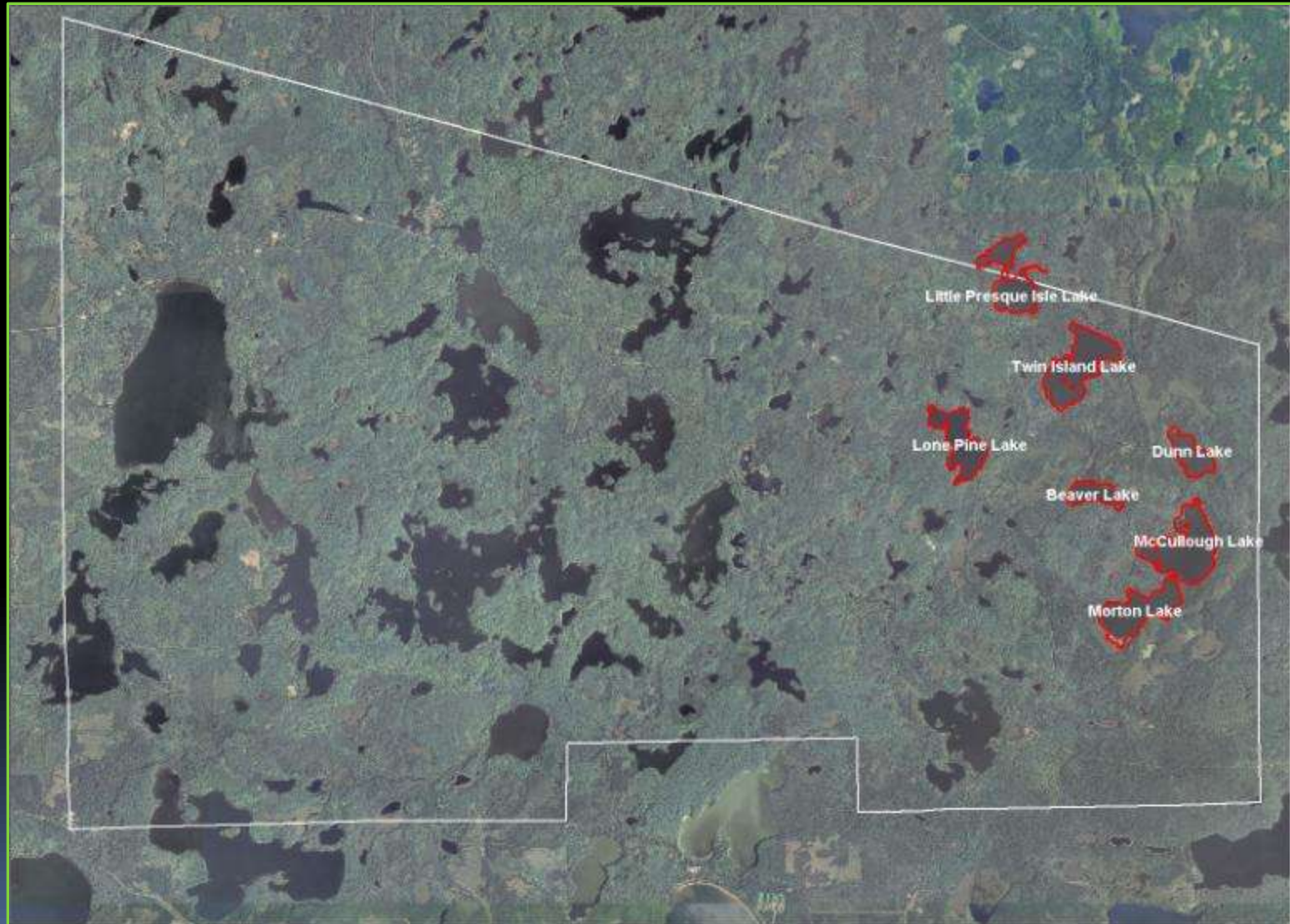
2008 Point-intercept plant surveys



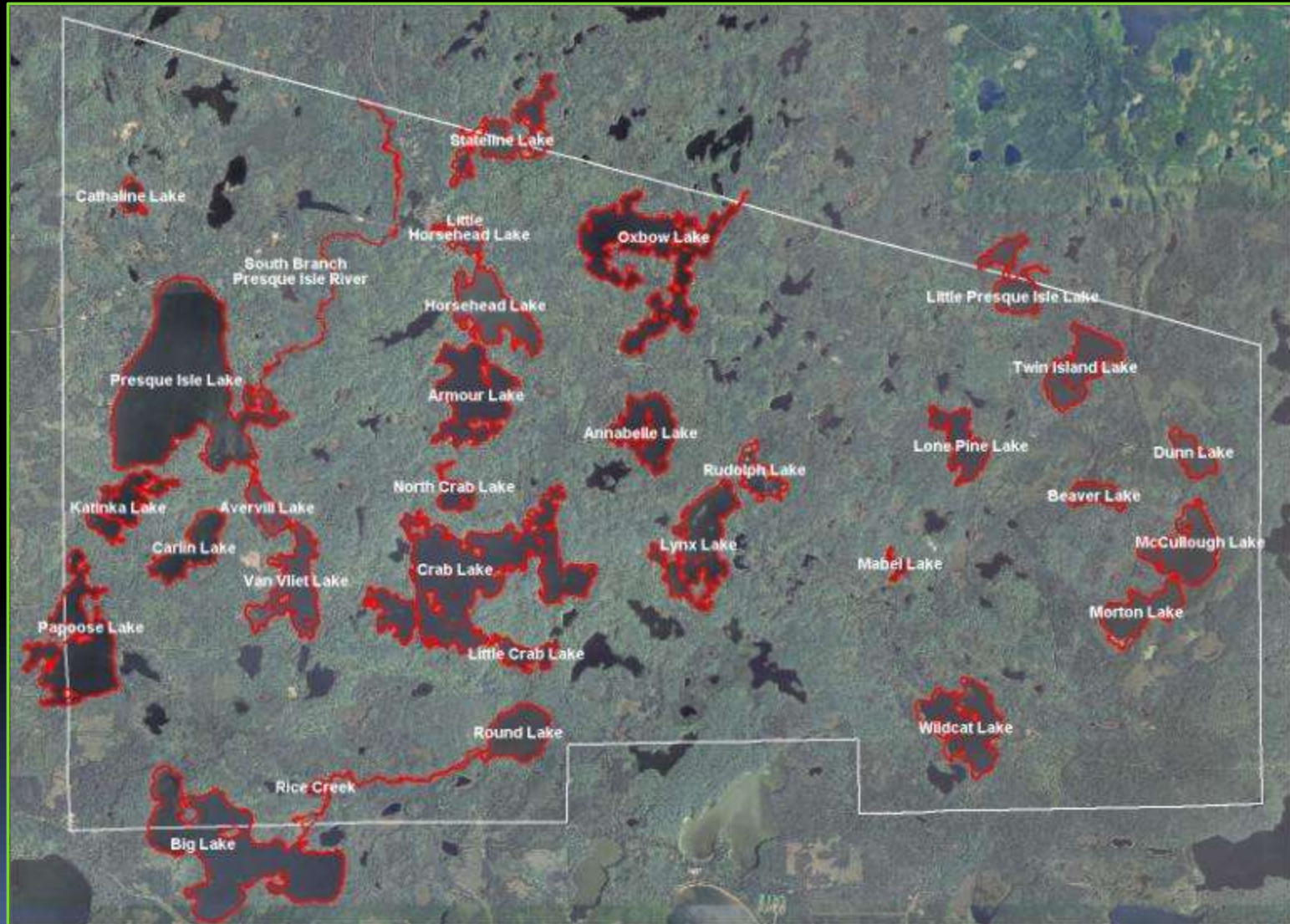
2010 Point-intercept plant surveys



2011 Point-intercept plant surveys



All point-intercept plant surveys



Point-Intercept Plant Surveys

- No AIS plants have been found in lakes so far surveyed
- A single purple loosestrife plant was found on Rice Creek in 2010



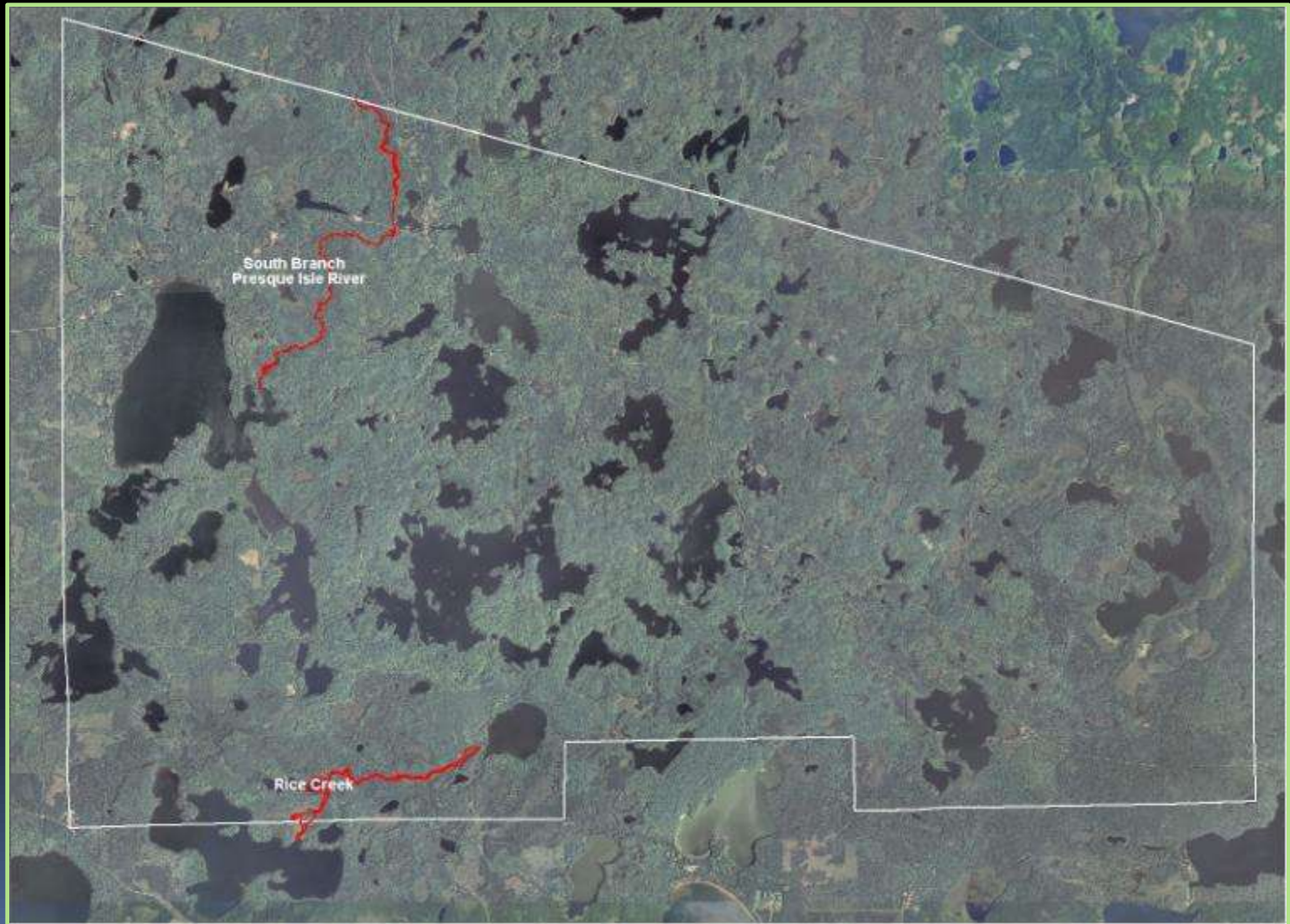
Point-Intercept Plant Surveys

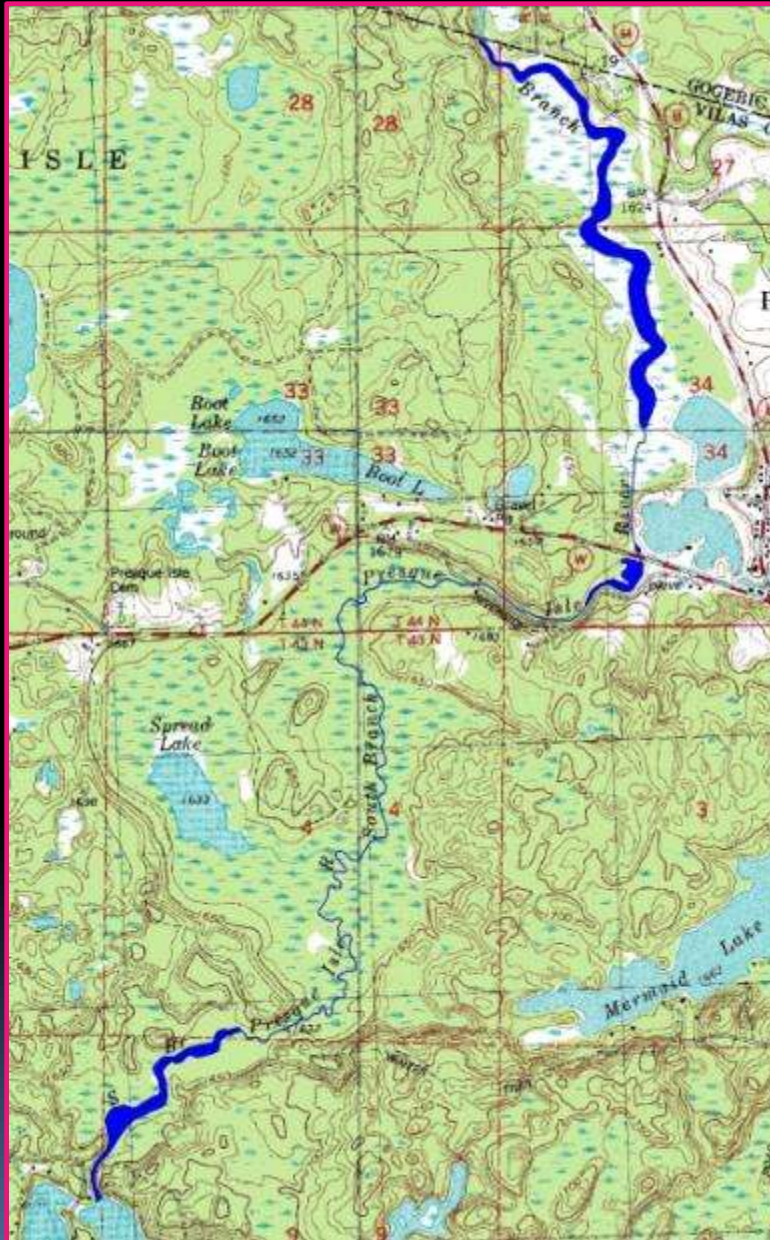


Point-Intercept Plant Surveys



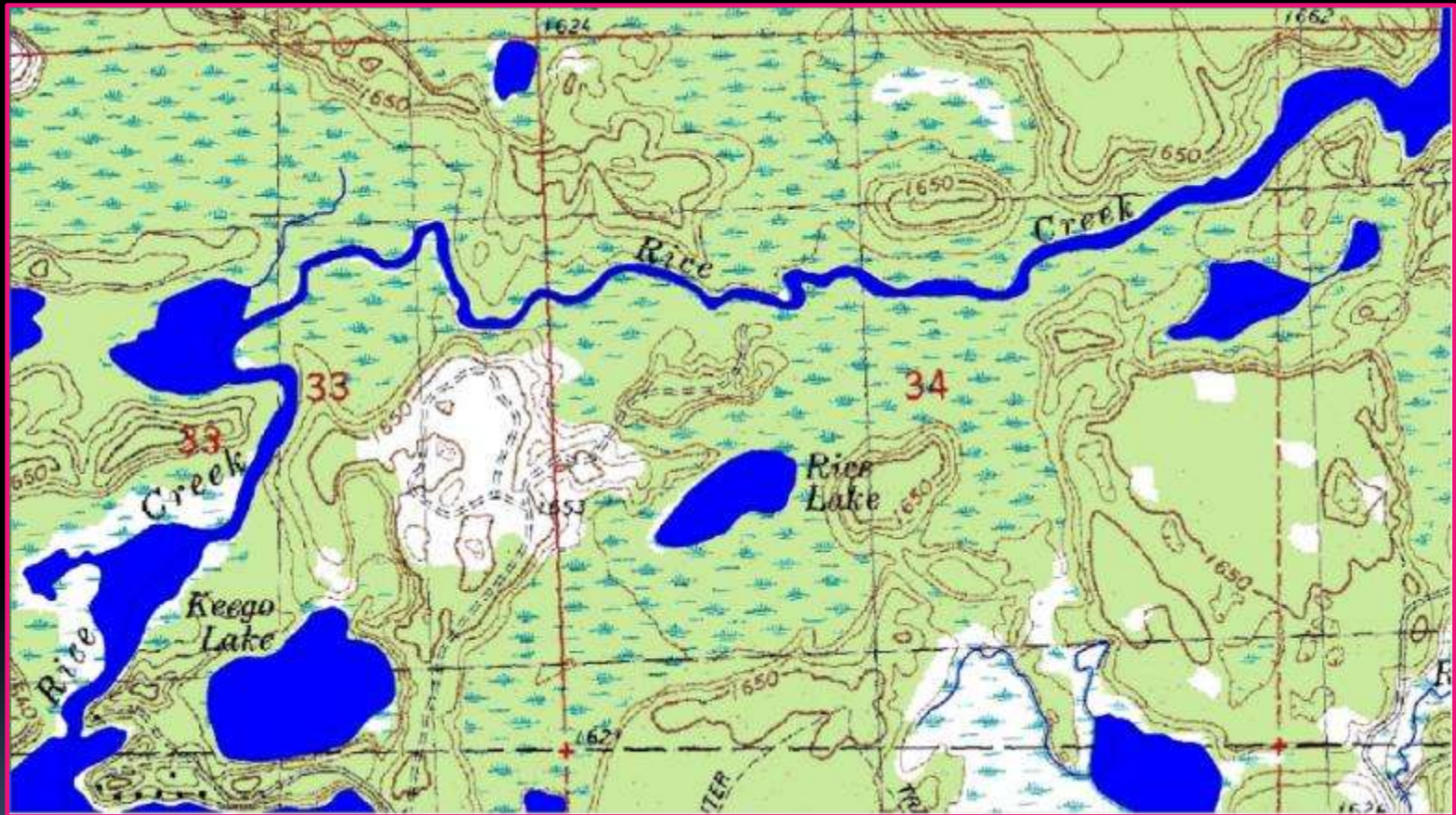
Point-Intercept Plant Surveys - Streams





Point-Intercept Plant Surveys – South Branch Presque Isle River

Point-Intercept Plant Surveys – Rice Creek



Point-Intercept Plant Surveys



Point-Intercept Plant Surveys



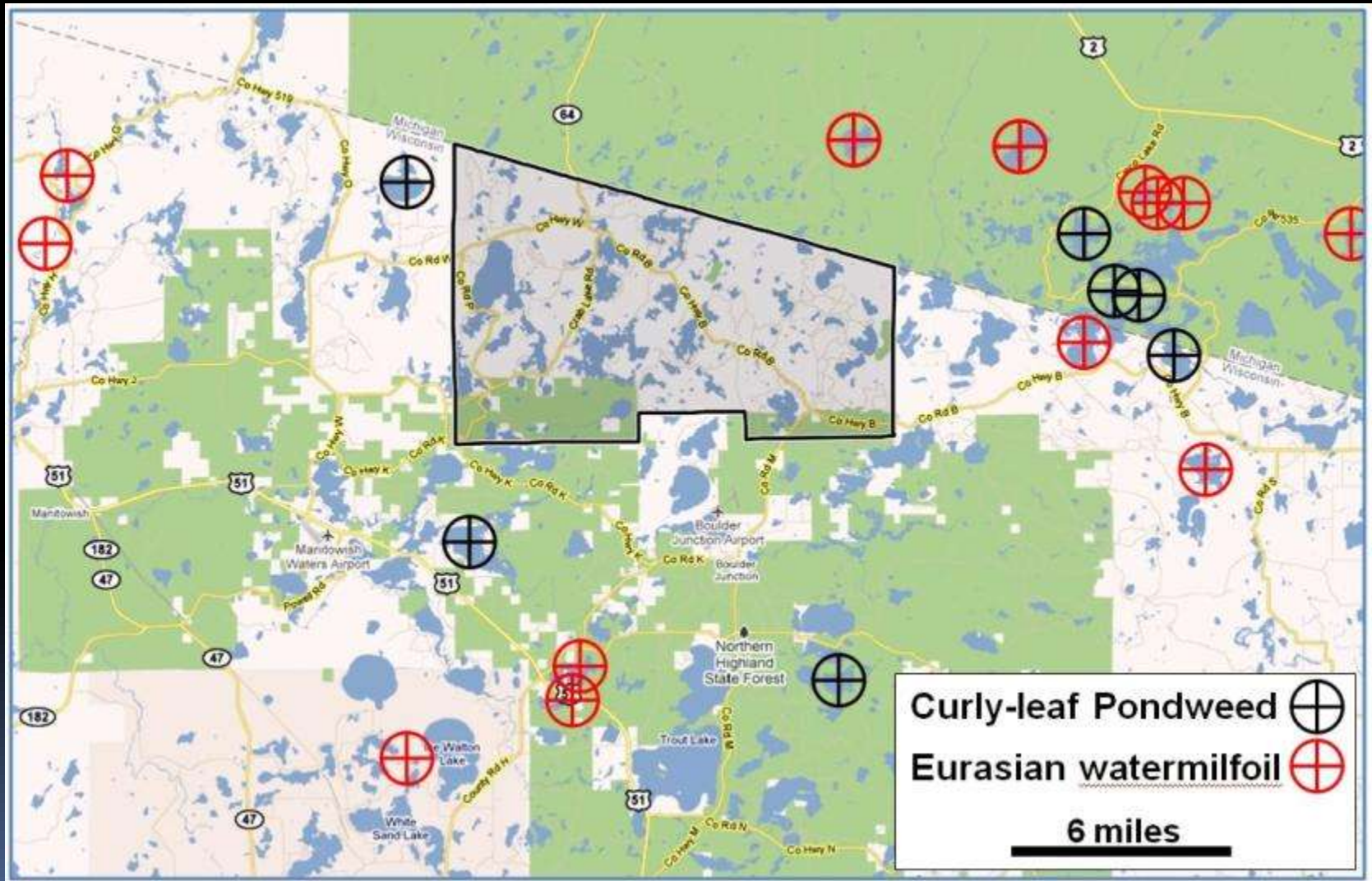
Wilderness Waters Program

Waterscape-wide Planning

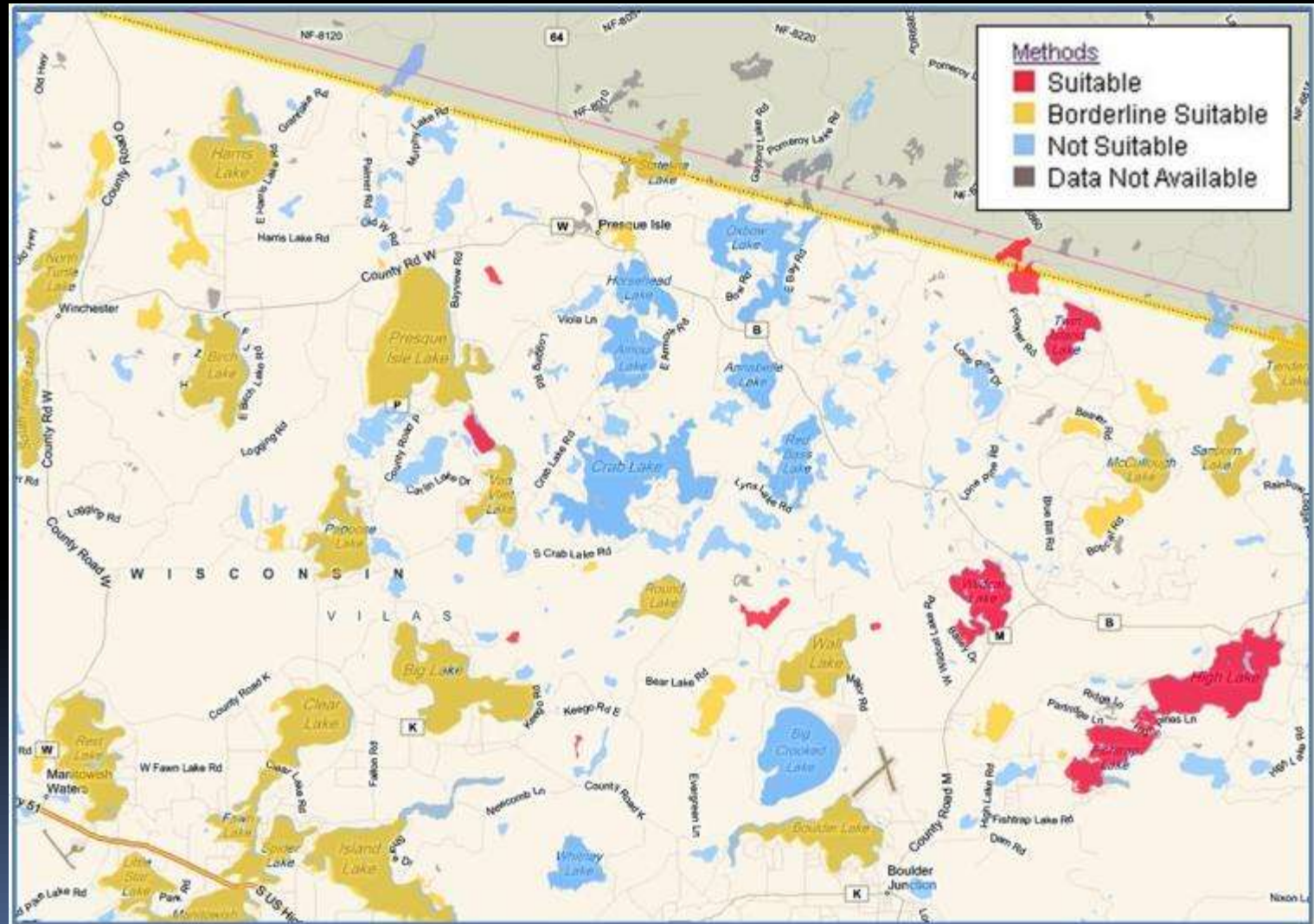
Initiation in 2009

A principal goal is to systematically integrate lake monitoring and management efforts of the PITLC into a single Presque Isle Wilderness Waters Program.

Proximity of Aquatic Invasive Plants



Potential for other Aquatic Invasives



Advantages of waterscape-wide planning:

- (1) Distribution of volunteer hours
- (2) Reduces redundancy in education
- (3) Better communication
- (4) Manage project life-cycle issues
- (5) Greater opportunity-efficiency
- (6) All water bodies viewed as an interacting suite of ecosystems

Wilderness Waters Program has ambitious work in 2010 and 2011:

- (1) Aquatic plant surveys
- (2) Summarize water quality information
- (3) Collect new water quality information
- (4) AP Reports & AP Management Plans
- (5) Waterscape Adaptive Management Plan
- (6) Education activities

Preparing for the arrival...



Protect what's best!!!

