

# Building a Native Plant Program from the Ground Up

The Chequamegon-Nicolet National Forest Experience



# Program Building Blocks

**Community Connections**

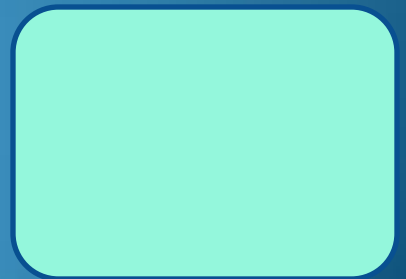
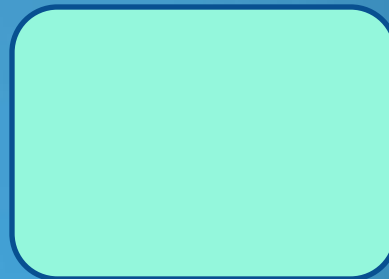
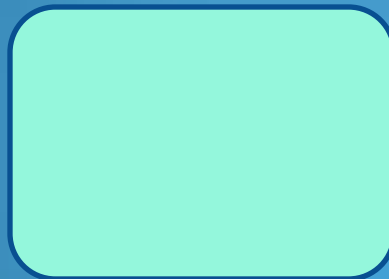
**Seed Utilization**

**Seed Handling**

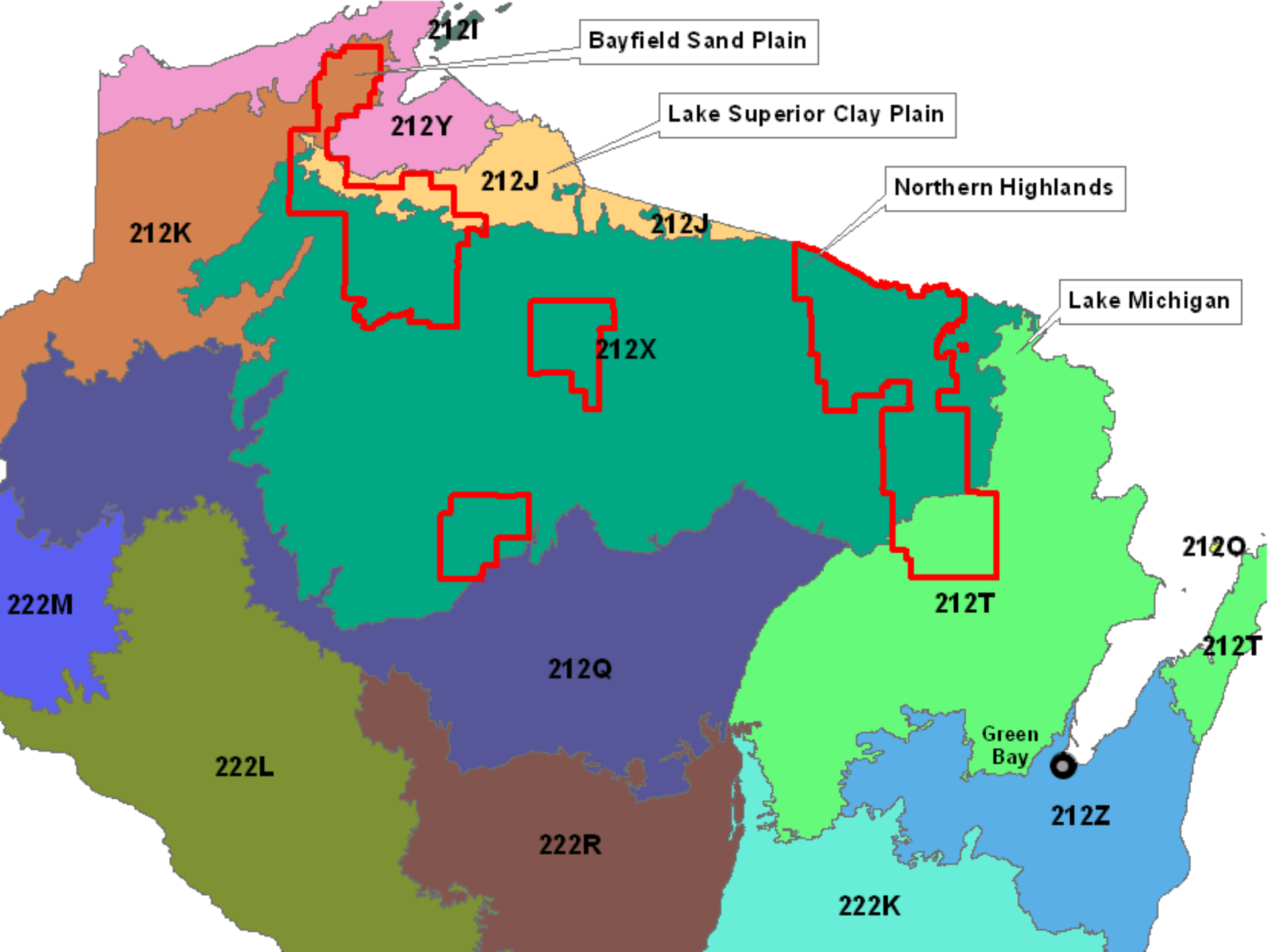
**H o m e w o r k**

# Program Building Blocks

**Define Seed  
Zones**





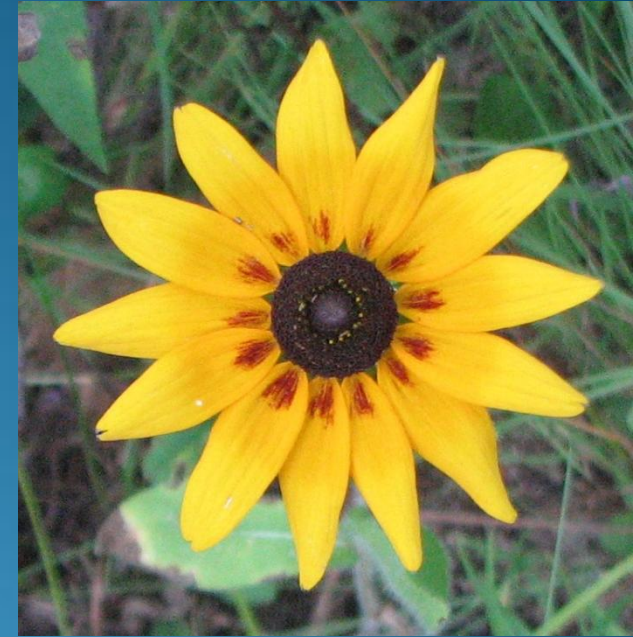


Local



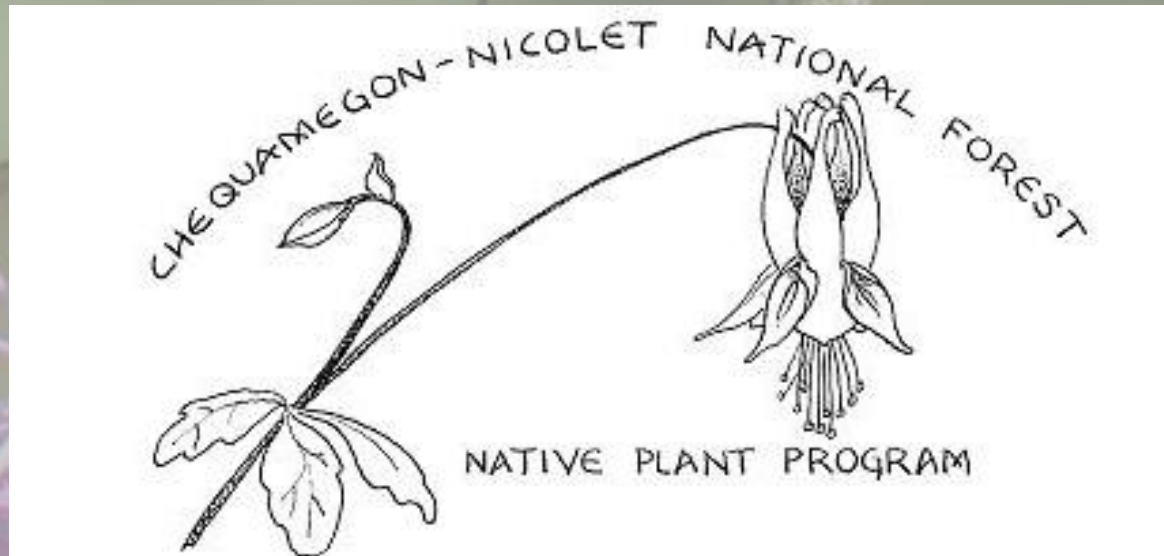
Black-eyed  
Susan

Not Local



Wild  
Bergamot

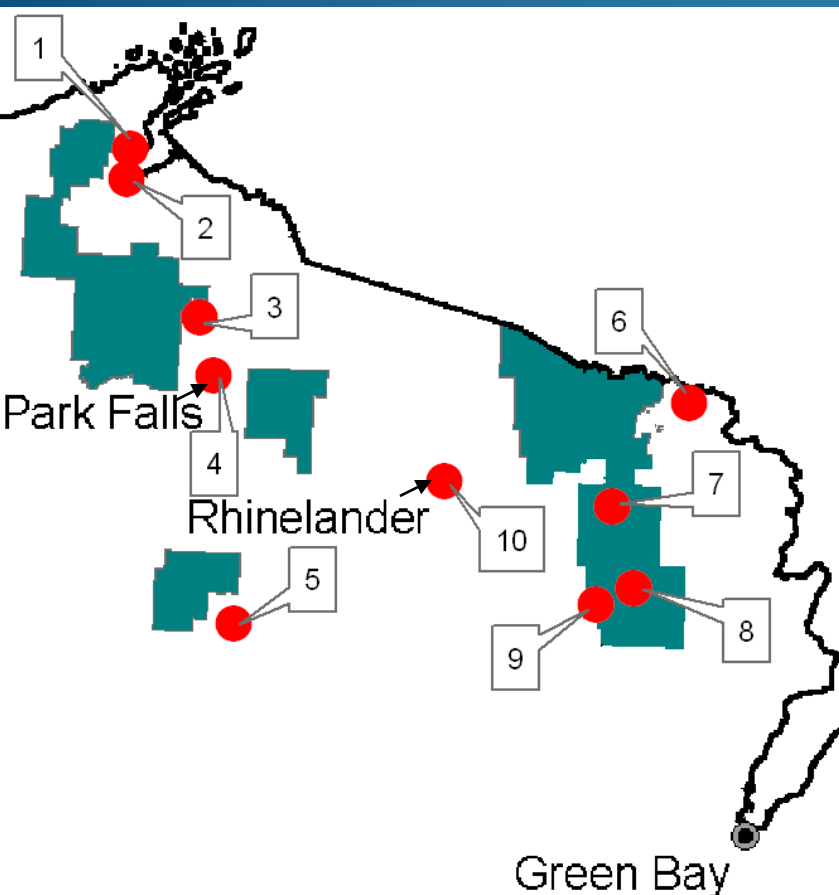




# Native Plant and Pollinator Program



# Native Plant Gardens at all Administrative Sites



- 1 – Washburn District Office
- 2 – Northern Great Lakes Visitor Center
- 3 – Glidden District Office
- 4 – Park Falls Supervisor's Office
- 5 – Medford District Office
- 6 – Florence District Office
- 7 – Laona District Office
- 8 – Lakewood District Office
- 9 – Oconto River Seed Orchard
- 10 – Rhineland Supervisor's Office

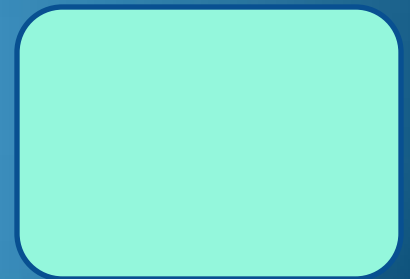
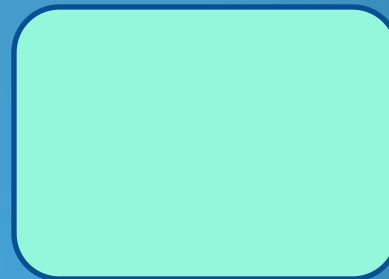


# Program Building Blocks

UW-Stevens Point Freckmann Herbarium at  
<http://wisplants.uwsp.edu/VascularPlants.html>

**Define Seed  
Zones**

**Assemble  
Species List**



# Some Favorite Species



**Tall Thimbleweed**

*(Anemone virginiana)*

**Wild Columbine**

*(Aquilegia canadensis)*

**Common Milkweed**

*(Asclepias syriaca )*

**Smooth Aster**

*(Aster laevis)*

**Flat-Topped Aster**

*(Aster umbellatus)*

**Fringed Brome**

*(Bromus ciliatus)*

**Harebell**

*(Campanula rotundifolia)*

**Bottlebrush Grass**

*(Elymus hystrix)*

**Grass-Leaved Goldenrod** *(Euthamia graminifolia)*

**False Sunflower** *(Heliopsis helianthoides)*

**Great St. John's-wort** *(Hypericum pyramidatum)*

**Rough Blazing-Star** *(Liatris aspera)*

**Wild Bergamot** *(Monarda fistulosa)*

**Evening Primrose** *(Oenothera biennis)*

**Black-Eyed Susan** *(Rudbeckia hirta)*

**Cut-Leaved Coneflower** *(Rudbeckia laciniata)*



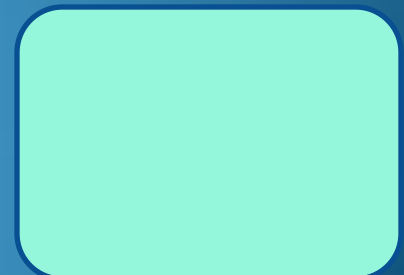
# Program Building Blocks

Native Plant Network at  
<http://nativeplants.for.uidaho.edu/network/search.aspx?SearchType=Continental>

**Define Seed  
Zones**

**Assemble  
Species List**

**Check  
Propagation  
Protocols**





# Program Building Blocks

- Species
- Location
  - Date

**Collect  
Seeds**

**Define Seed  
Zones**

**Assemble  
Species List**

**Check  
Propagation  
Protocols**

**Find  
Collection  
Sites**



# Program Building Blocks



**Collect  
Seeds**

**Clean  
Seeds**

**Define Seed  
Zones**

**Assemble  
Species List**

**Check  
Propagation  
Protocols**

**Find  
Collection  
Sites**

# Program Building Blocks



**Collect  
Seeds**

**Clean  
Seeds**

**Define Seed  
Zones**

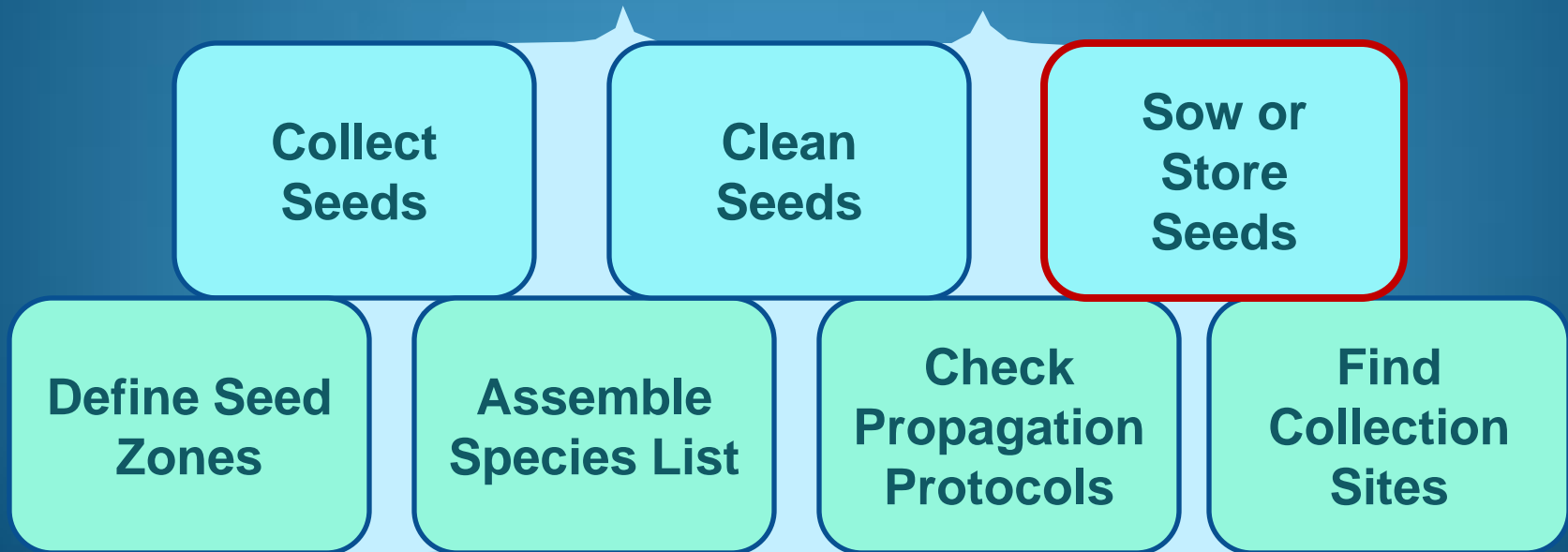
**Assemble  
Species List**

**Check  
Propagation  
Protocols**

**Find  
Collection  
Sites**



# Program Building Blocks

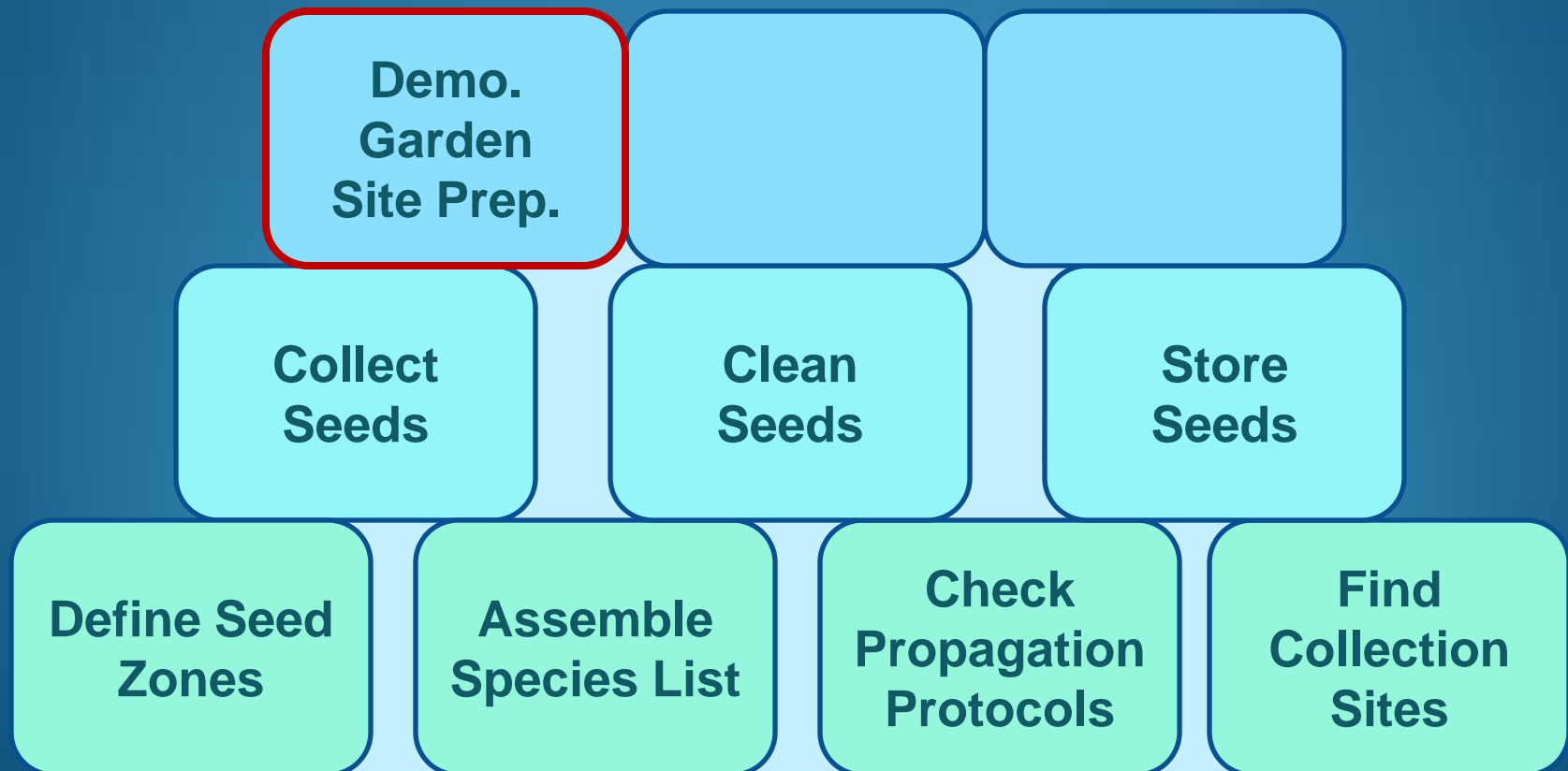


# Schoolyard Habitats Across WI - Laona





# Program Building Blocks



# Site Preparations



# Site Prep. Continued





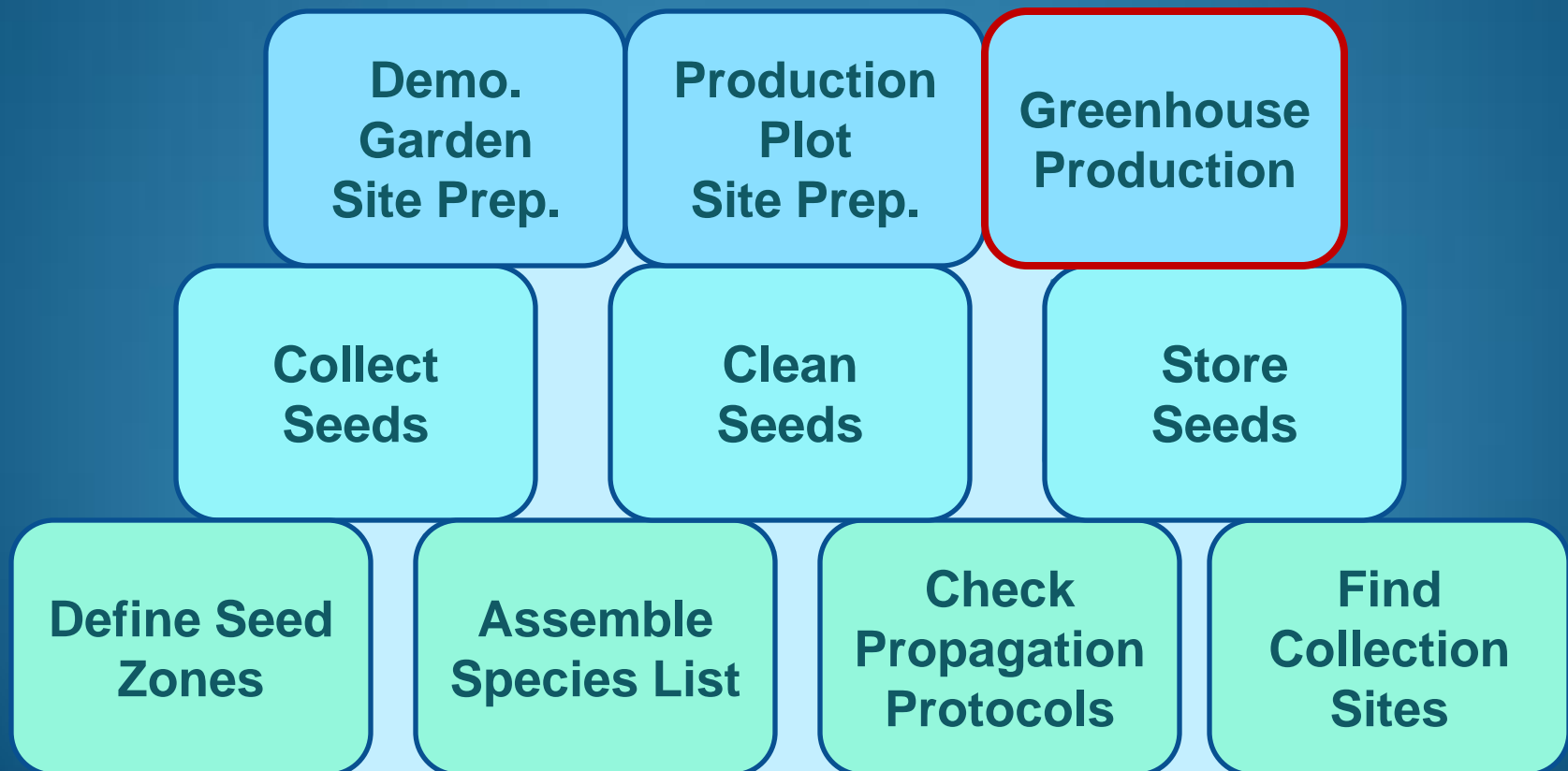
# Site Prep. For Large Sites



- Mow, Till/Disk,
- Sow Oats & Field Pea,
- Mow, Till,
- Sow Buckwheat,
- Mow, Till,
- Sow Winter Rye/Wheat,
- Repeat for a 2nd year



# Program Building Blocks



# Greenhouse at ORSO



# Dwarf Bilberry & Northern Blue Butterfly

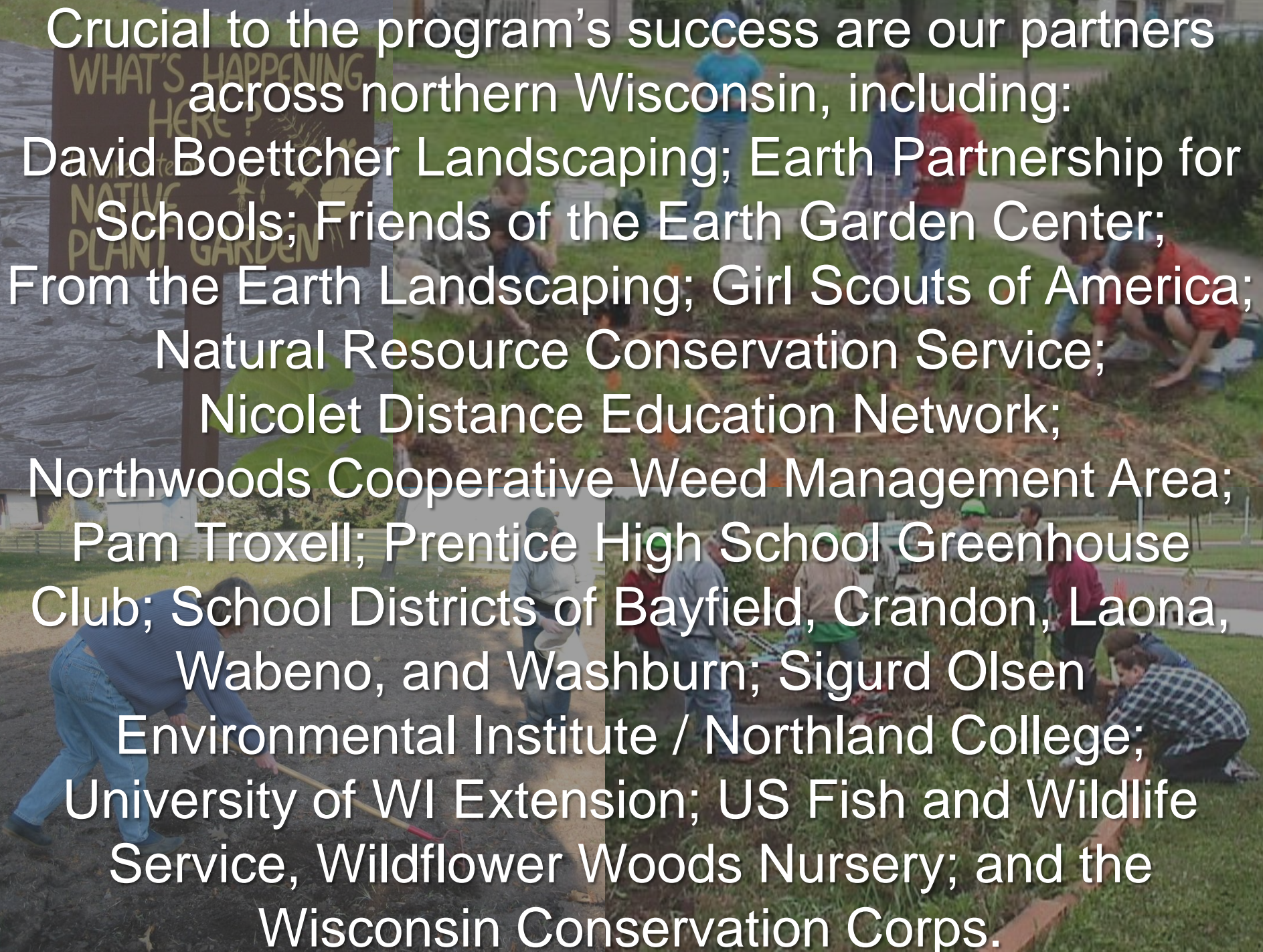


# Growing Plants in the Classrooms



# Program Building Blocks

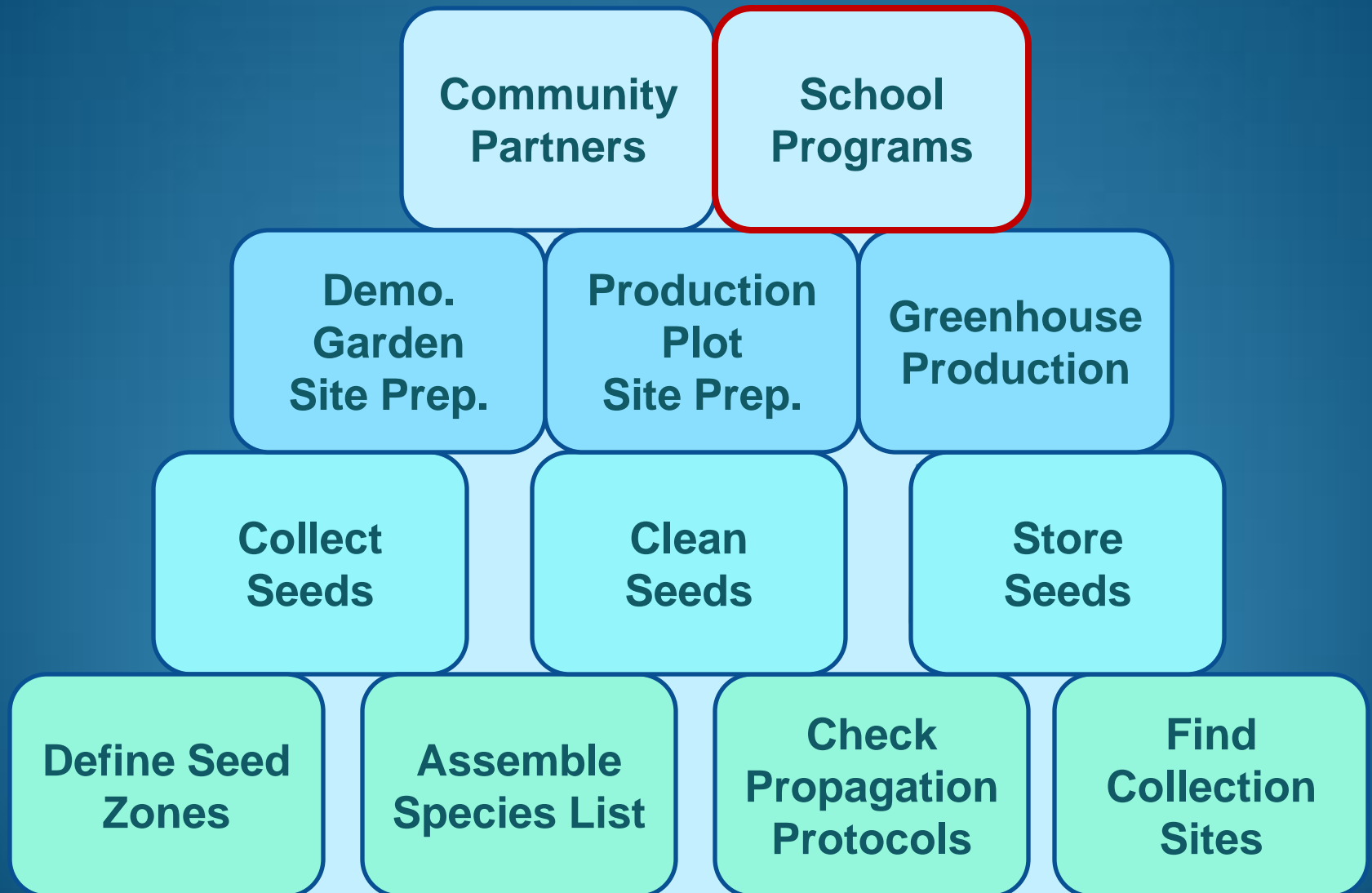




Crucial to the program's success are our partners across northern Wisconsin, including:

David Boettcher Landscaping; Earth Partnership for Schools; Friends of the Earth Garden Center; From the Earth Landscaping; Girl Scouts of America; Natural Resource Conservation Service; Nicolet Distance Education Network; Northwoods Cooperative Weed Management Area; Pam Troxell; Prentice High School Greenhouse Club; School Districts of Bayfield, Crandon, Laona, Wabeno, and Washburn; Sigurd Olsen Environmental Institute / Northland College; University of WI Extension; US Fish and Wildlife Service, Wildflower Woods Nursery; and the Wisconsin Conservation Corps.

# Program Building Blocks



# What To Expect



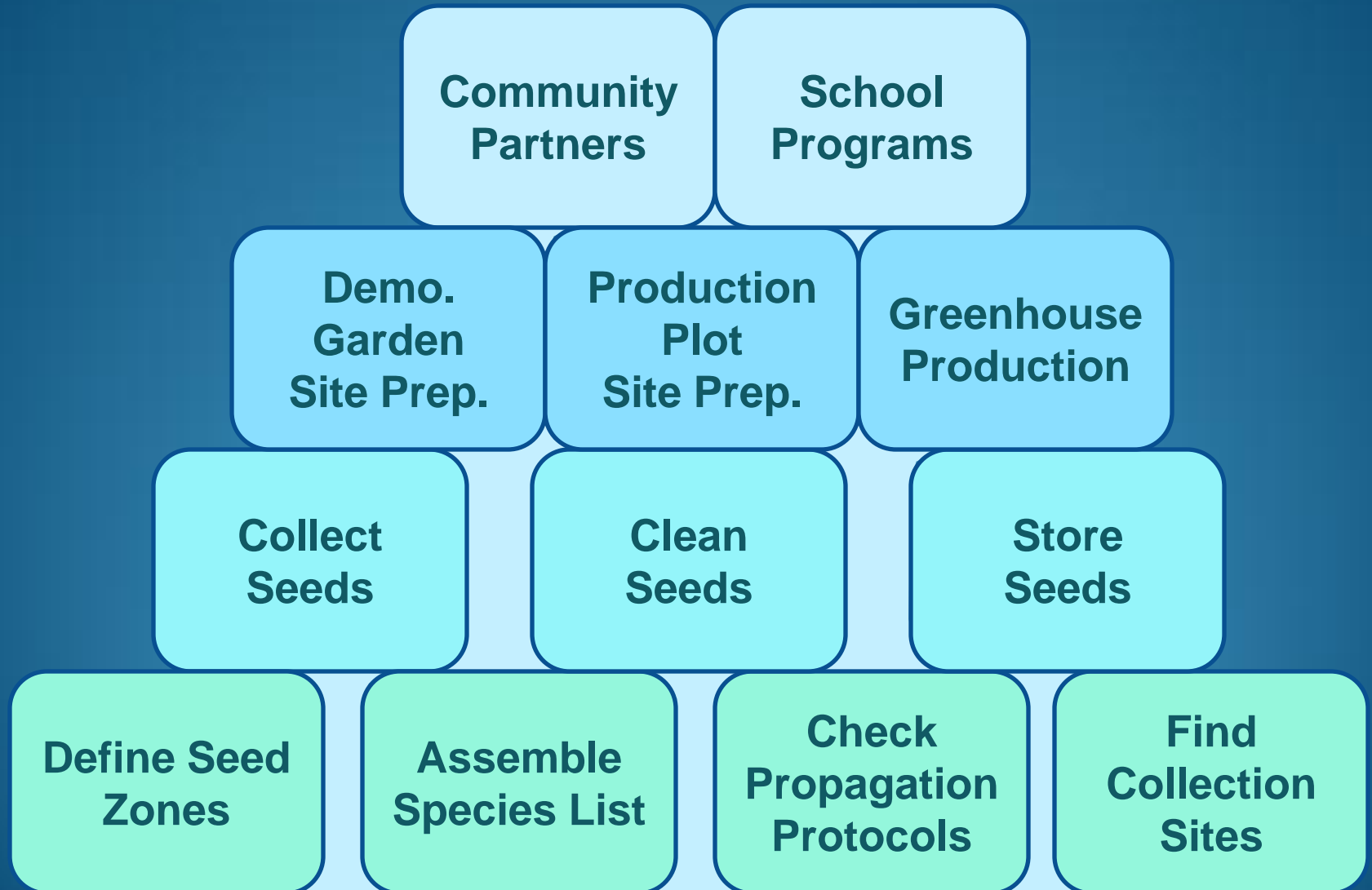


# What To Expect



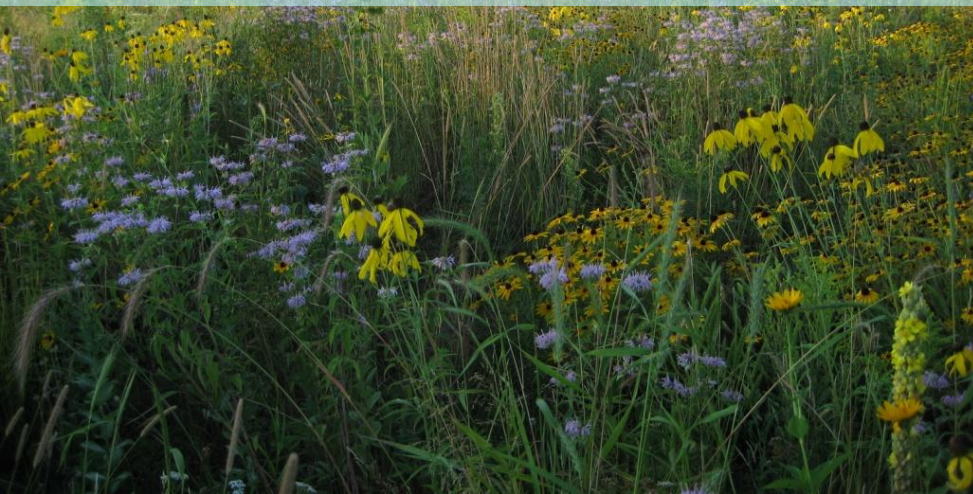


# Program Building Blocks





**“Just imagine, collectively, the neighborhood and environmental benefits if all those 4<sup>th</sup> graders convince their parents to landscape with native plants or create a rain garden.”**  
**- *Ashland Daily Press*, July 2007**



07/25/2007



# Future Plans



# Schoolyard Habitats Across WI - Laona



# Native Plants in Laona's Schoolyard Habitat





