

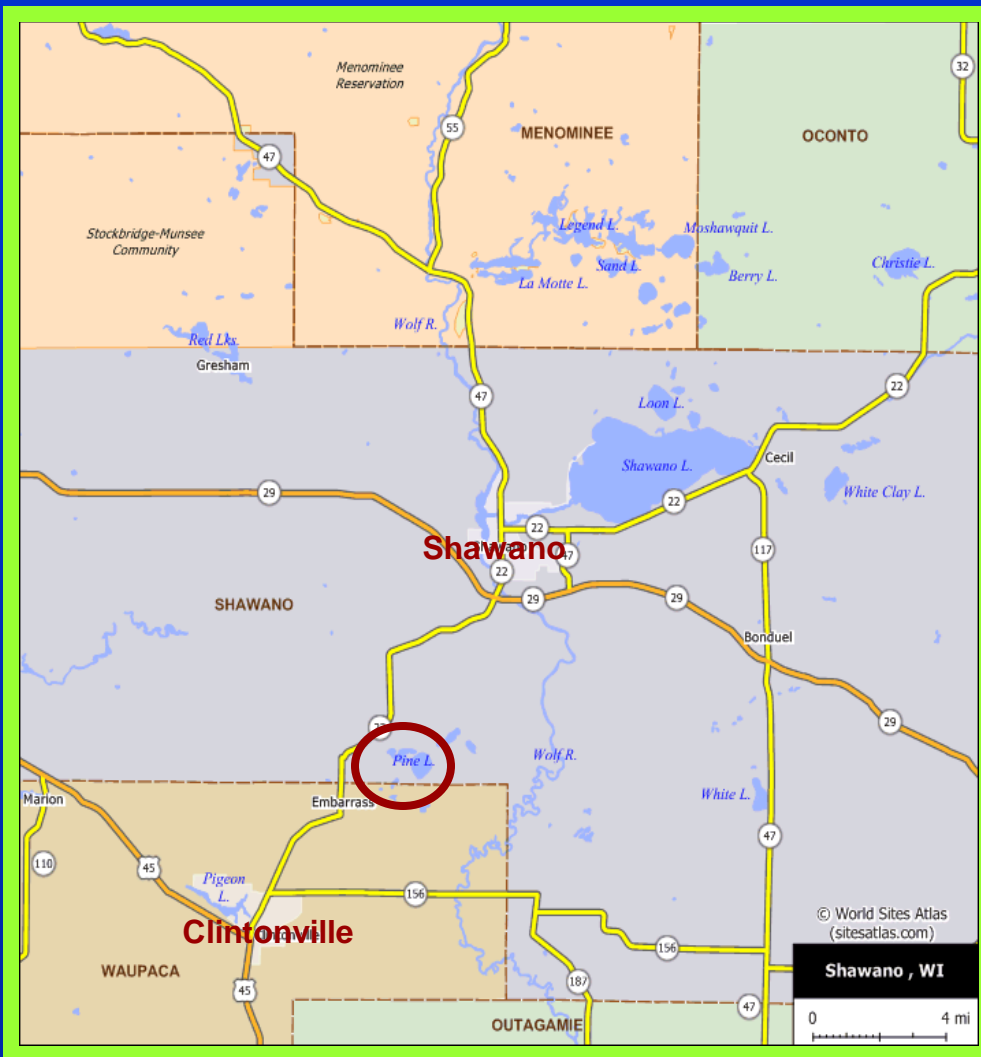


Preserving Our Lakes for Future Generations

Cloverleaf Lakes Long-Range Comprehensive Plan



Cloverleaf Lakes Location



- **Shawano County**
- **Between Shawano and Clintonville**
- **Town of Belle Plaine**
- **Chain of three lakes (Pine, Grass, & Round)**

Results of Newsletter Survey (2004)



- **Invasive Species**
- **Weed Control**
- **Water Quality**
- **Mosquito Control**
- **Lake Levels**
- **Water Craft Speed**
- **Sediment (silt/muck)**
- **Fish Stocking**
- **Gibson Island**

- **Speed on Roads**
- **Peace and Quiet**
- **Slow No-Wake**
- **Gypsy Moth**
- **Shore Restoration**
- **Muskrat Trapping**
- **Town Board Relationship**
- **Sense of Community**
- **Stieg Property**
- **Lake District**



WISCONSIN'S RECREATION CENTER
THE PLACE FOR HEALTH, REST & PLEASURE

Clover Leaf Lakes



PROTECTIVE ASSOCIATION

INCORPORATED 1930

P.O. Box 288

Embarrass, WI 54933-0288

Preserving our lakes for future generations.

Managing the Lakes Differently



- **Decisions based on data/information**
- **Continuity**
- **Communication**
- **Consensus**
- **Prevention**
- **RESIDENT-DRIVEN**

Involvement of Multiple Partners



- **Town of Belle Plaine**
- **Department of Natural Resources**
- **UW Extension**
- **UW (Green Bay & Stevens Point)**
- **Wisconsin Lake Association**
- **Lake and Pond Solutions, LLC**

Timeline



- **December 2004 – February 2005**
Design Group conceptualization of planning process
- **February 2005: Study Group Kick-Off Event**
- **March 2005 – January 2006: Monthly Study Group Meetings**
 - **May 2005: Progress Report to Annual Meeting**
 - **February 2006: Study Group Presentations**
- **May 2006: Report of Plan to Annual Meeting**
- **June 2006 – September 2006**
CLPA review of Recommendations
Adoption of Implementation Strategy
- **September 2006 to Present: Task Forces and Action Teams**

Study Process



- **Differentiate fact from fiction.**
- **Clarify what is already known.**
- **Identify the questions that need answers.**
- **Explore various scenarios.**
- **Seek relevant data and information.**
- **Summarize key findings and make recommendations to the CLPA.**

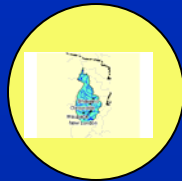
Organized for Success

Cloverleaf Lakes Protective Association (CLPA)

DESIGN GROUP
Residents, Consultants, Facilitators



Invasive and Nuisance Species



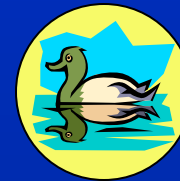
Watershed Issues



Aquatic Plants



Recreational Use



Water Quality And Habitat

People Resources



Design Team



Resource Consultants



Facilitators

Other Resources

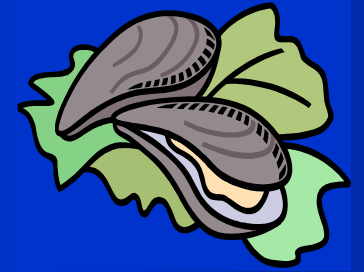


- **Books and Articles**
- **Conferences/Workshops**
- **Previous Lake Studies**
- **Promising Practices from Other Lakes**

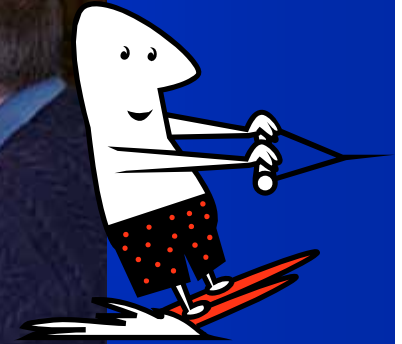
Aquatic Plants



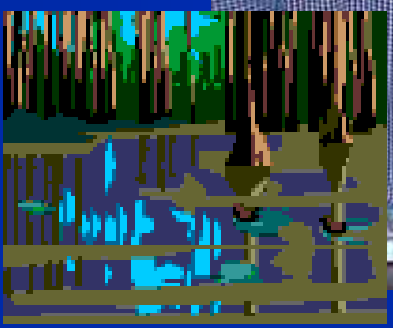
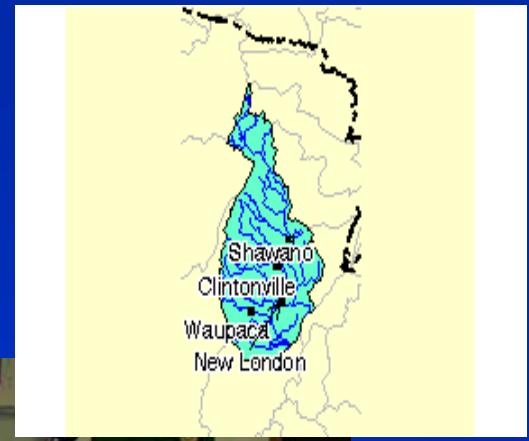
Invasive & Nuisance Species



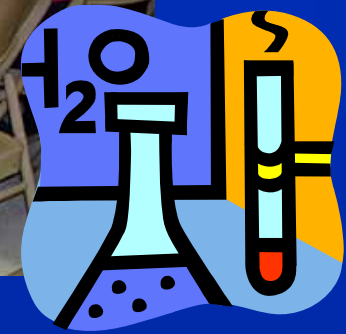
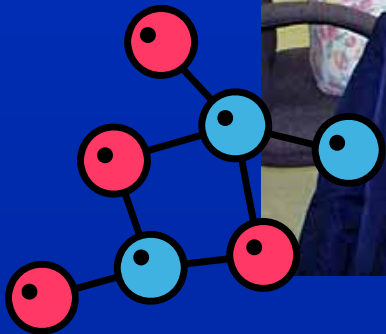
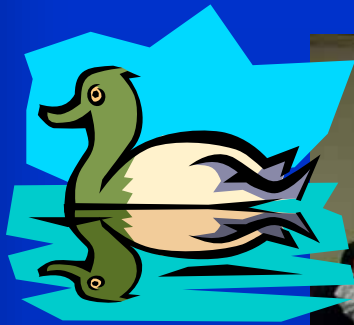
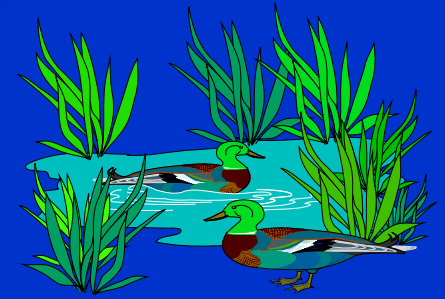
Recreational Use



Watershed



Water Quality and Habitat





Cloverleaf Lakes Protective Association



LONG-RANGE COMPREHENSIVE LAKE MANAGEMENT PLAN

**STUDY GROUP
SUMMARY REPORTS**

February, 2006

"Preserving our lakes for future generations"

Recreational Use



Issues for Study

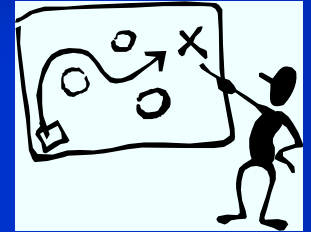
- Boats and other watercraft
- Carrying capacity (number of boats, size, and speed)
- Water toys; snowmobiles
- Night lighting
- Piers
- Tournament and ice fishing
- Water activities

Study Team Data Collection



- **Watercraft Census**
- **Resident Survey**
- **Boat Launch Data**

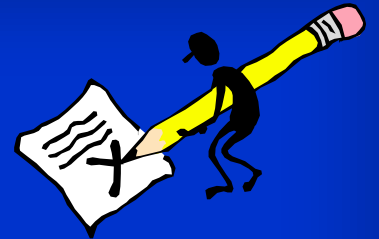
Carrying Capacity



Biological Carrying Capacity

Until biological indicators are identified and measured over time, it is difficult to assess the impact of boating, etc. on the health of the lake system.

Carrying Capacity



Social Carrying Capacity

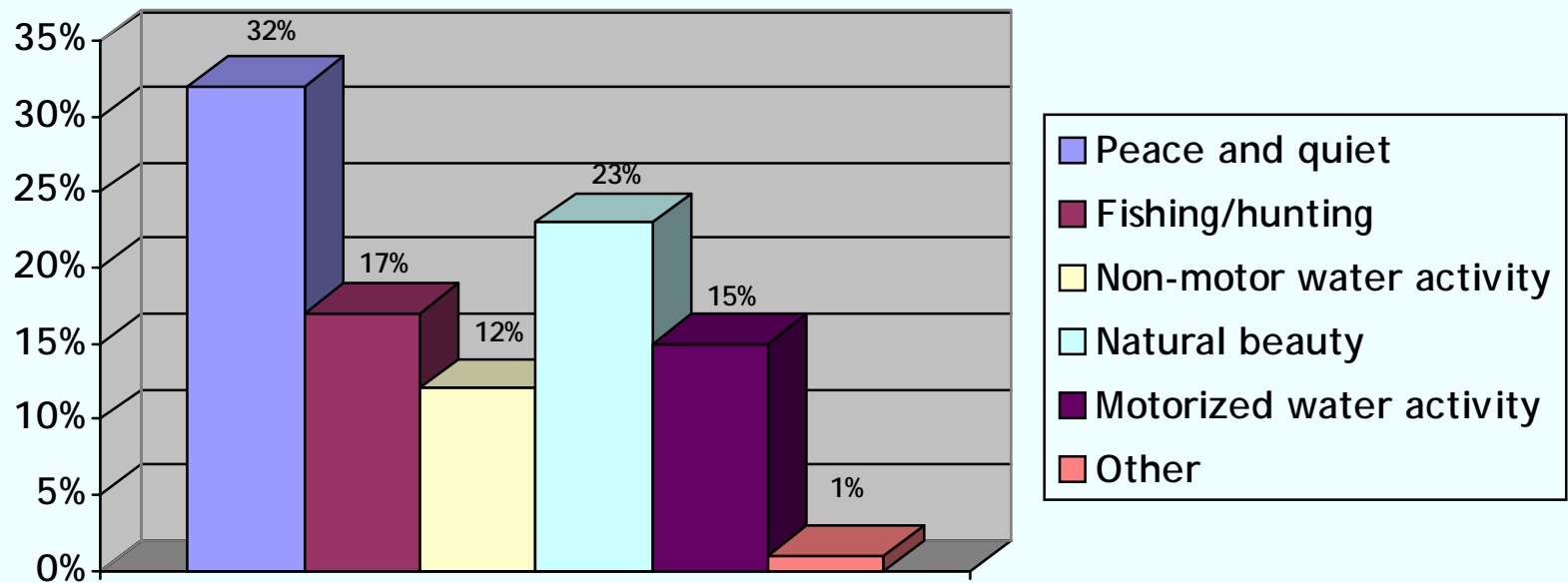
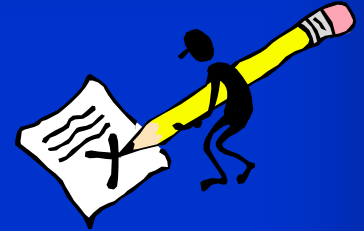
To assess lake residents' perception of the recreational use of our lakes (social carrying capacity), a survey was sent to 414 lake area residents.

Resident Survey



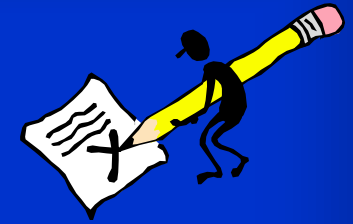
- **Administered June 2005**
- **Modeled on Lake Ripley Survey**
- **Total useable returns: 245**
Surveys mailed: 412
Return rate: 59%
- **Results released October 2005**

Survey Results #1



Respondents value the peace and tranquility of the lake environment while also enjoying its recreational opportunities.

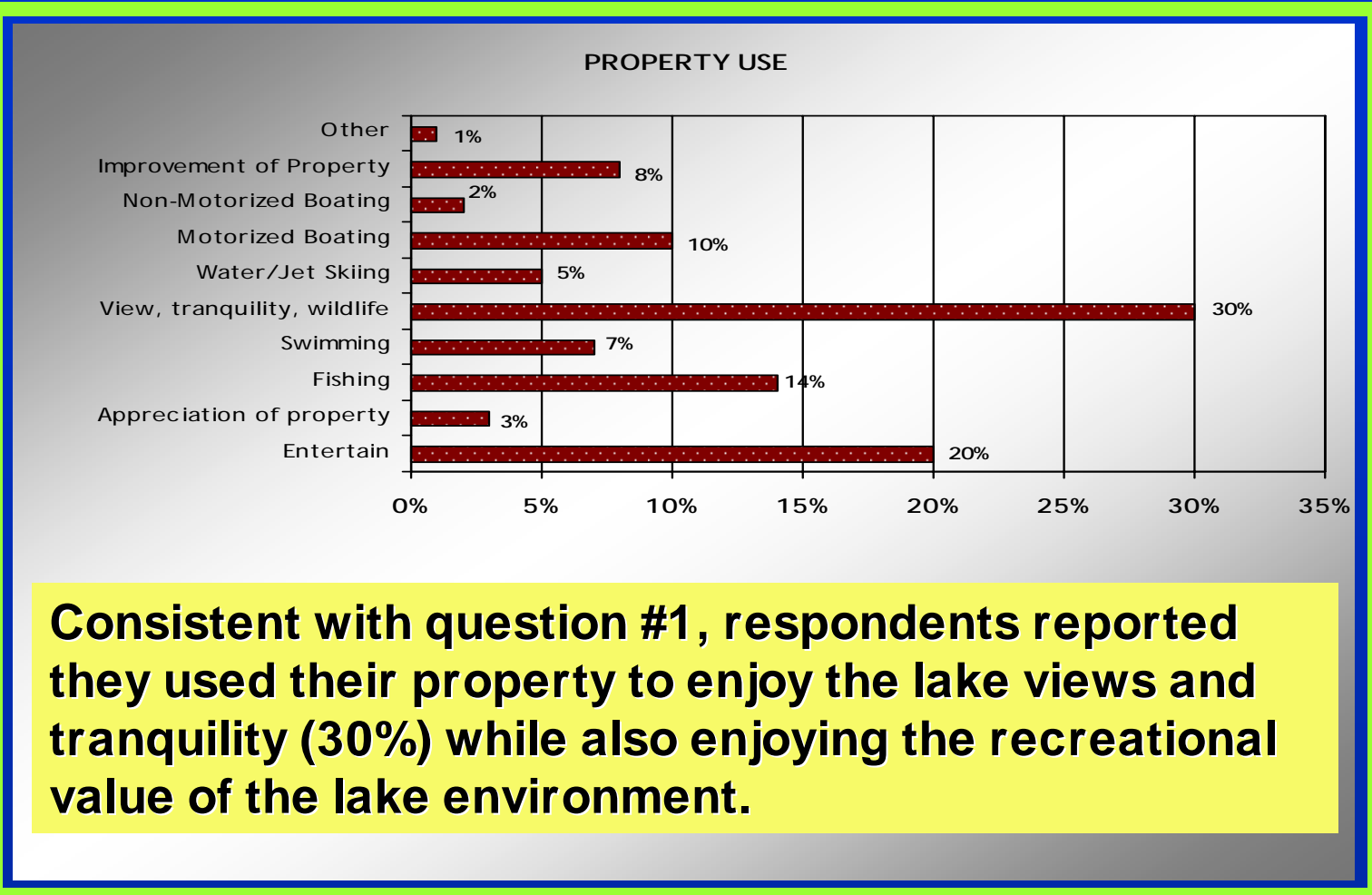
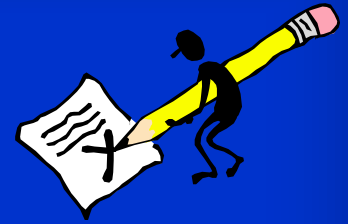
Survey Results #2



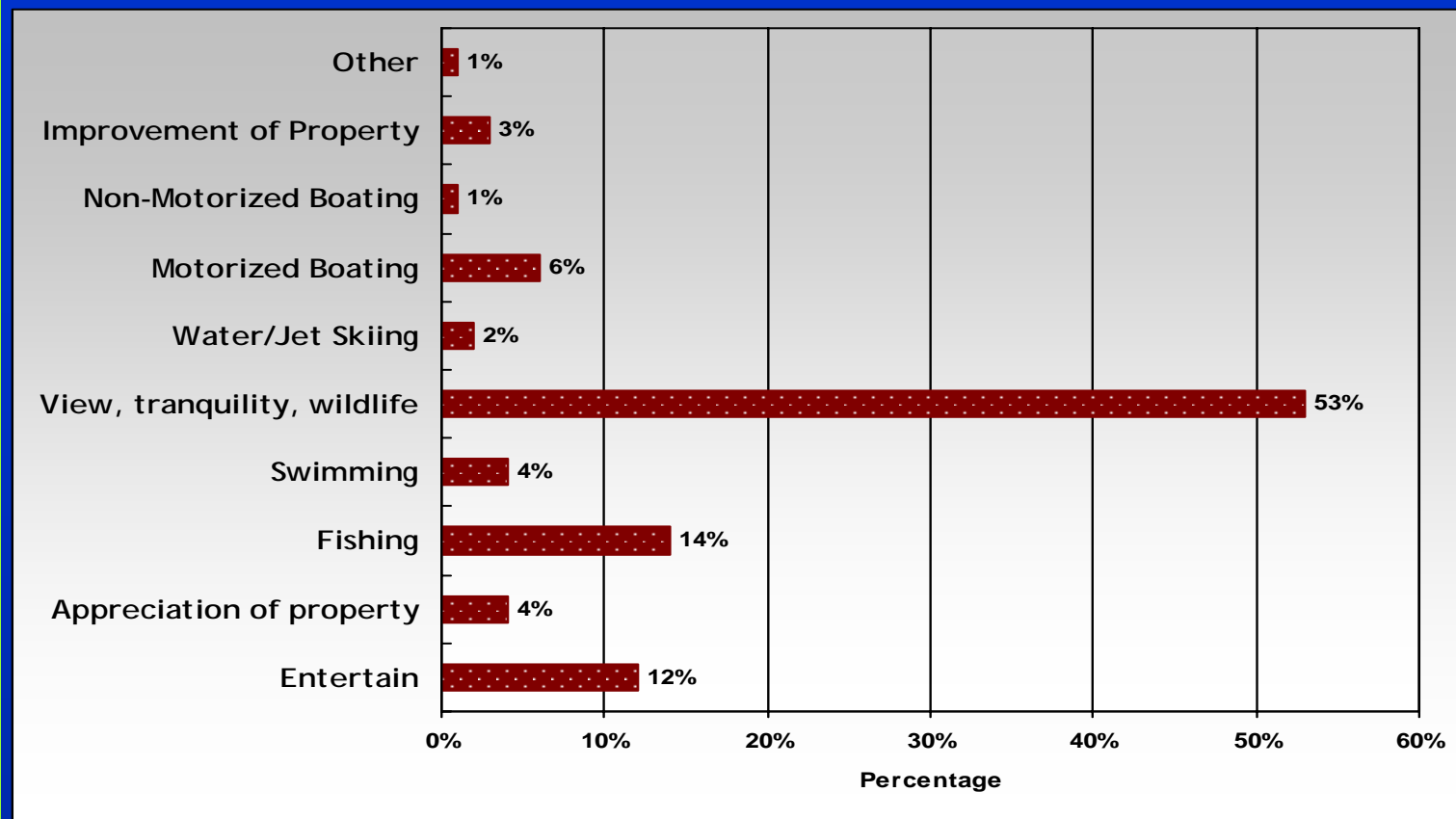
| Type of Watercraft | Number | Percentage | Type of Watercraft | Number | Percentage |
|--------------------|--------|------------|--------------------|--------|------------|
| Pontoons | 111 | 20% | Jet Skis | 38 | 7% |
| Canoes | 98 | 18% | Paddleboat | 37 | 7% |
| Rowboats | 62 | 11% | Sailboats | 16 | 3% |
| Motor 25-90 | 60 | 11% | Kayaks | 14 | 2% |
| Motor <25 | 58 | 10% | Other | 6 | 1% |
| Motor >90 | 56 | 10% | | | |

Watercraft of all types are kept at Cloverleaf Lakes. Pontoon boats were the most mentioned (20%) with canoes ranking second (18%).

Survey Results #3

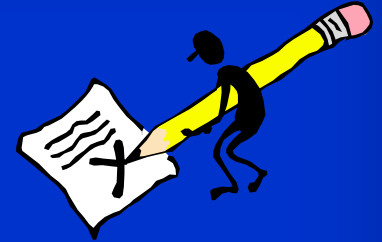


Survey Results #4



The majority of respondents (53%) reported that “enjoying the view, peace, tranquility, and wildlife” was most important to them.

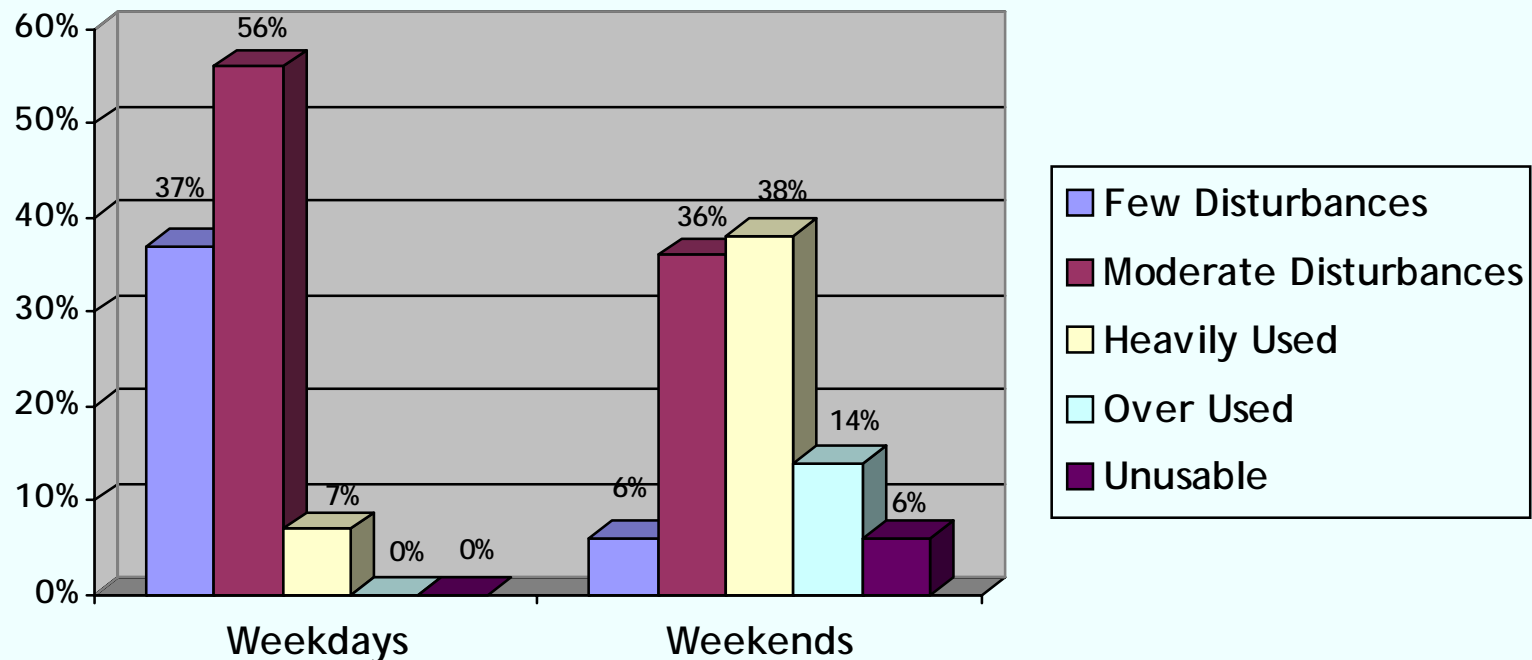
Survey Results #5



142 respondents (**60%**) indicated they use the lakes for fishing. This accounts for **3408** fishing days. While some fish more than others, the average for those who fish is 24 days/year.

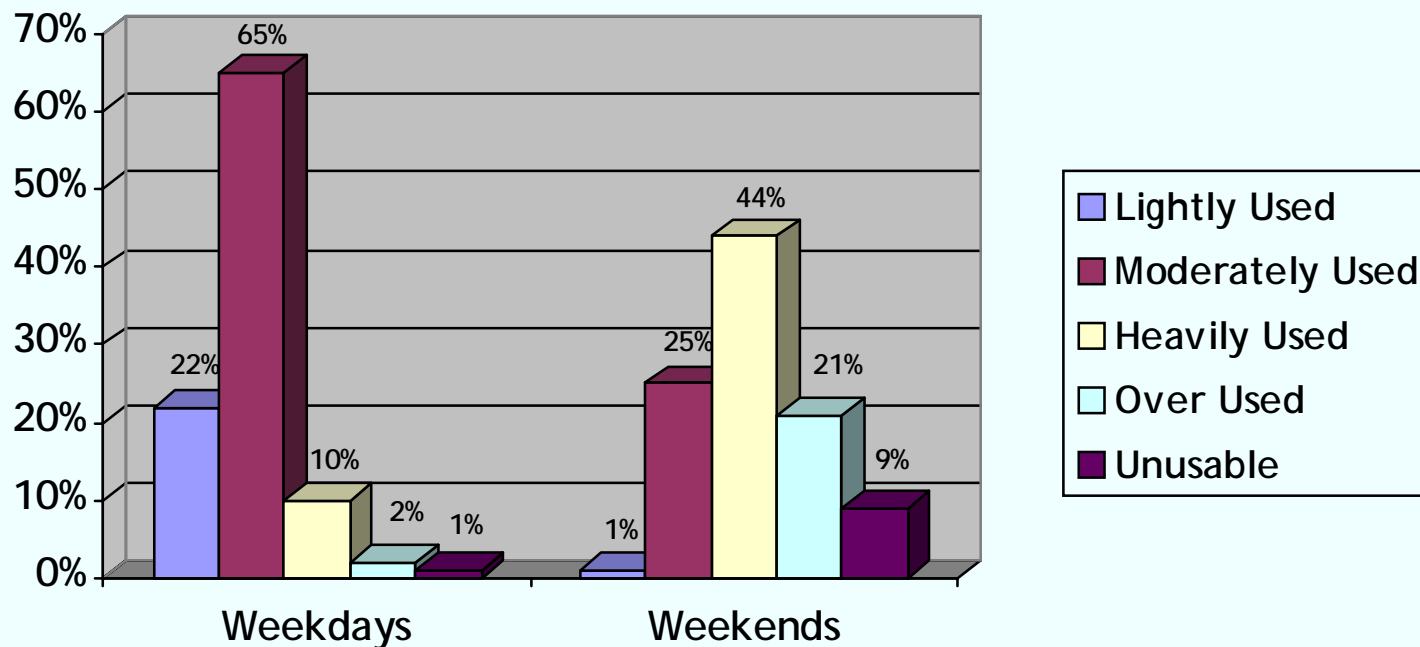
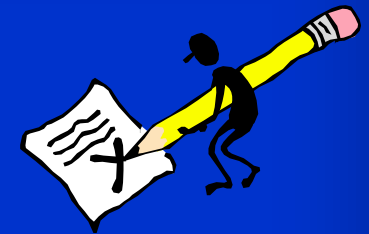
69 respondents (**29%**) indicated they ice fished. This accounts for **748** ice fishing days. While some fish more than others, the average for those who ice fish is **10.8** days per year.

Survey Results #7



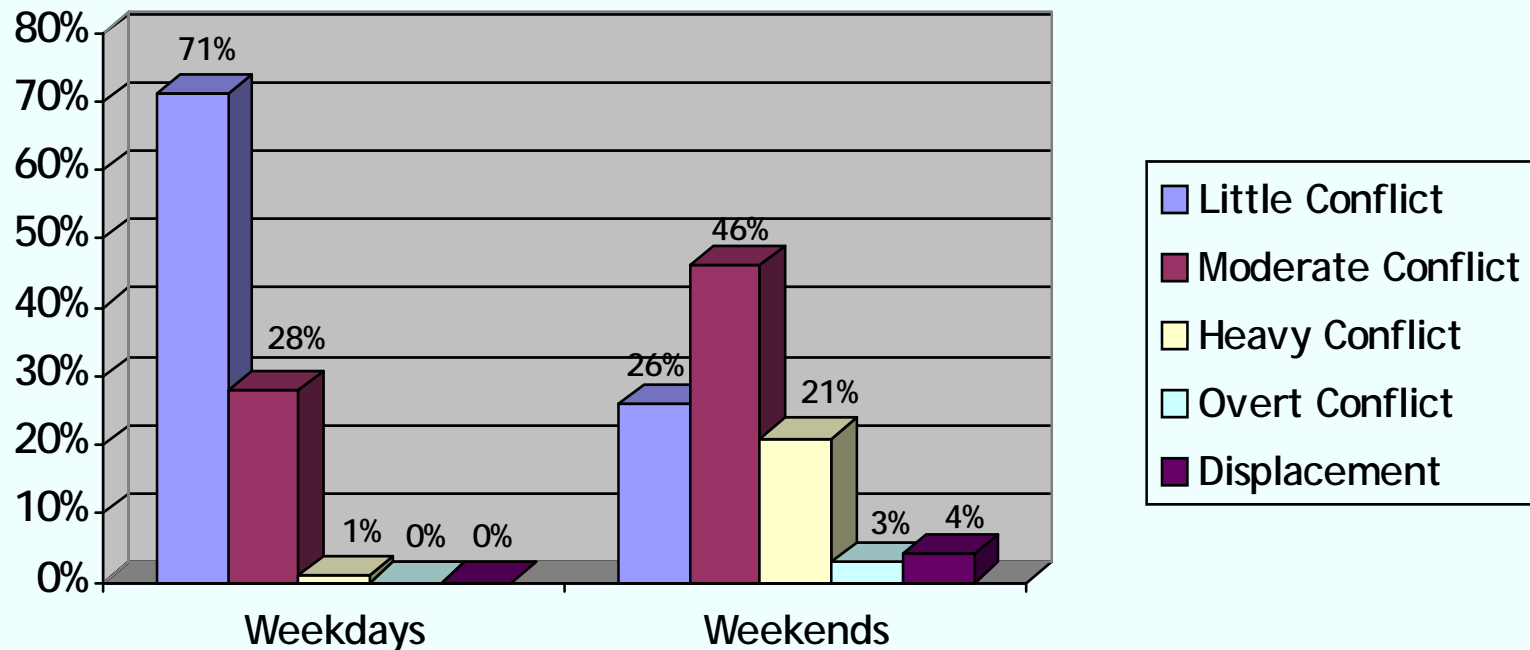
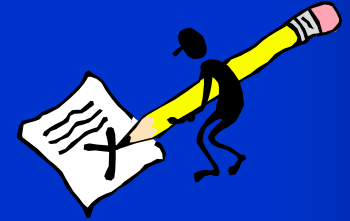
Respondents report weekdays are more peaceful and tranquil than weekends.

Survey Results #8



In describing boat traffic, respondents are satisfied with the amount of use on weekdays.

Survey Results #9



Respondents report more conflict on weekends than on weekdays. Even on weekends, conflict is not a major issue.

Survey Conclusions



- **The survey found the balance between tranquility and recreational use was not a problem on weekdays.**
- **Summer weekends were identified as more heavily used for recreational purposes. However, only 20% felt the lakes were overused (or worse) on weekends.**
- **The survey confirmed the group's theory that Cloverleaf Lakes is not viewed as overused.**
- **This survey will serve as a baseline should the CLPA choose to repeat it in future years.**

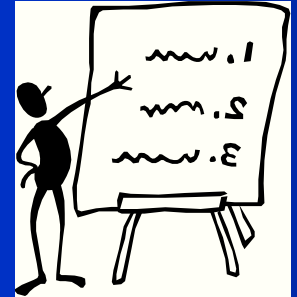
Watercraft Census



A watercraft census (counting number and types of boats on the lakes at specific and varied time periods) matched well with the survey data.

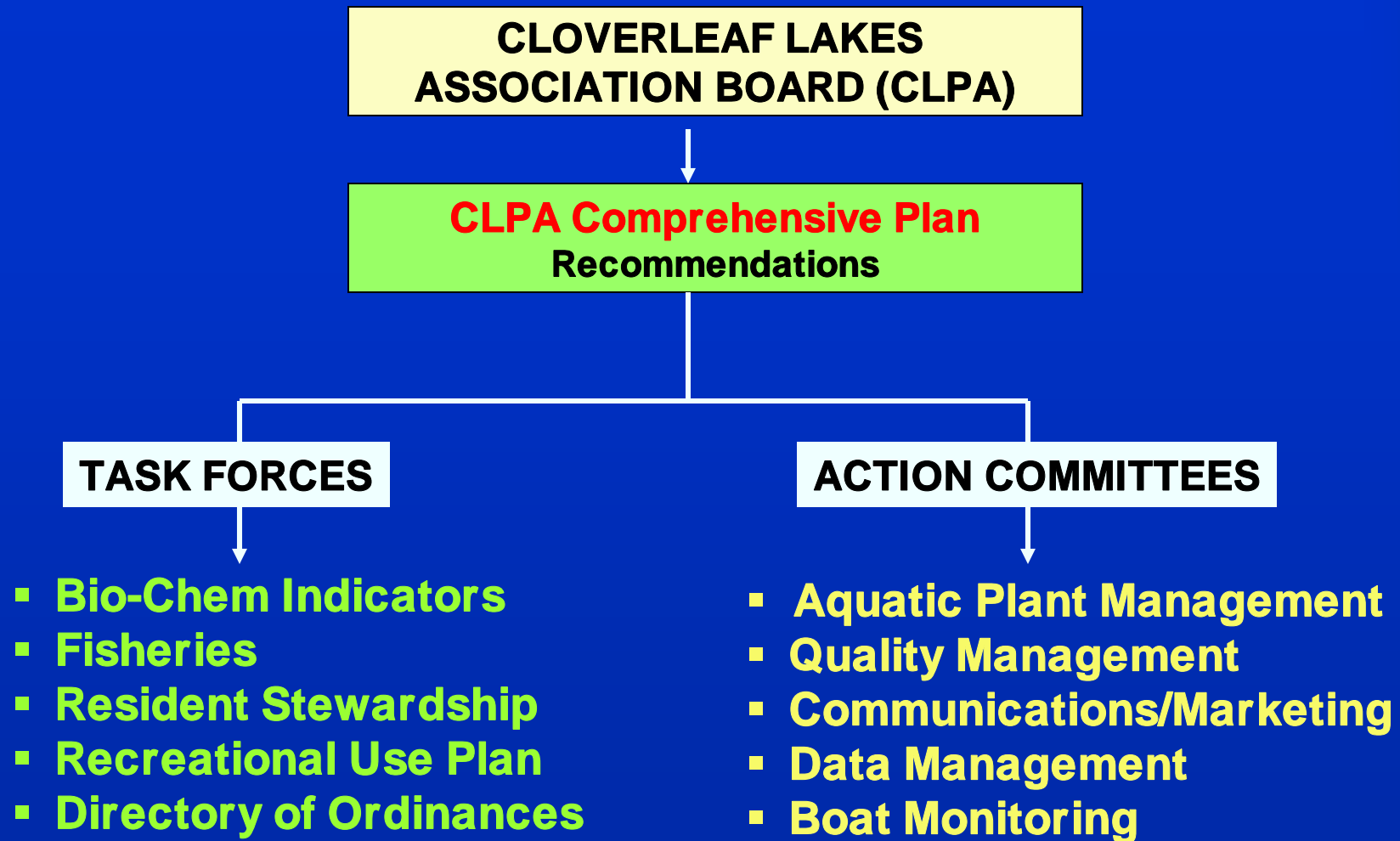
Three different time periods for data collections confirmed that few boats are on the lakes during the week, while weekends are busier, but not overly crowded.

Study Team Recommendations

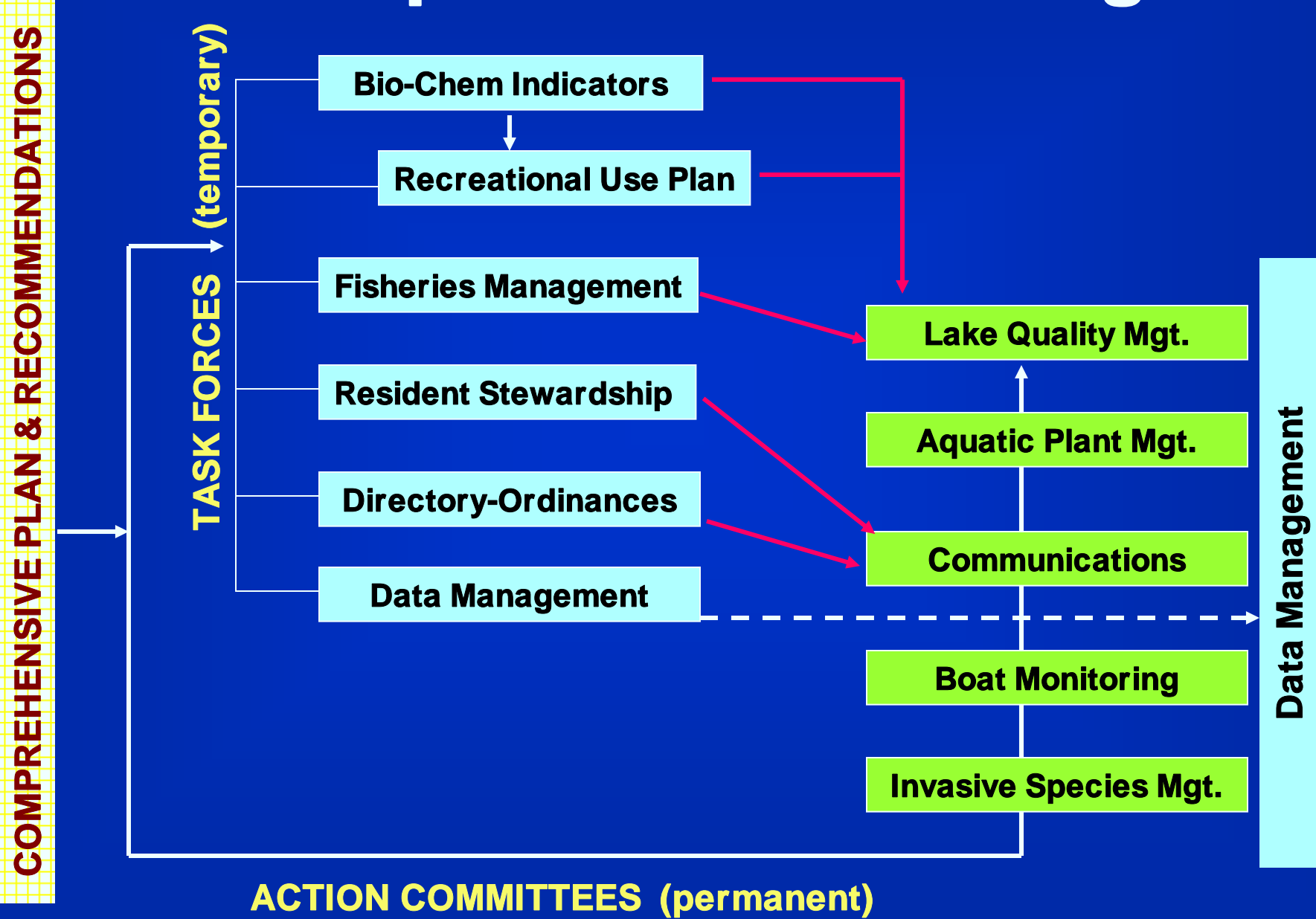


- 1. The Recreational Use Study Team recommended strategies to monitor the relationship between the biological health of the lakes and the use of recreational vehicles. Unless indicators point to deterioration in the wellness of the lakes, no additional ordinances should be passed to regulate the recreational use of the lakes.**
- 2. The Study Team also recommended strategies to educate boaters about their responsibility in maintaining a healthy lake system.**

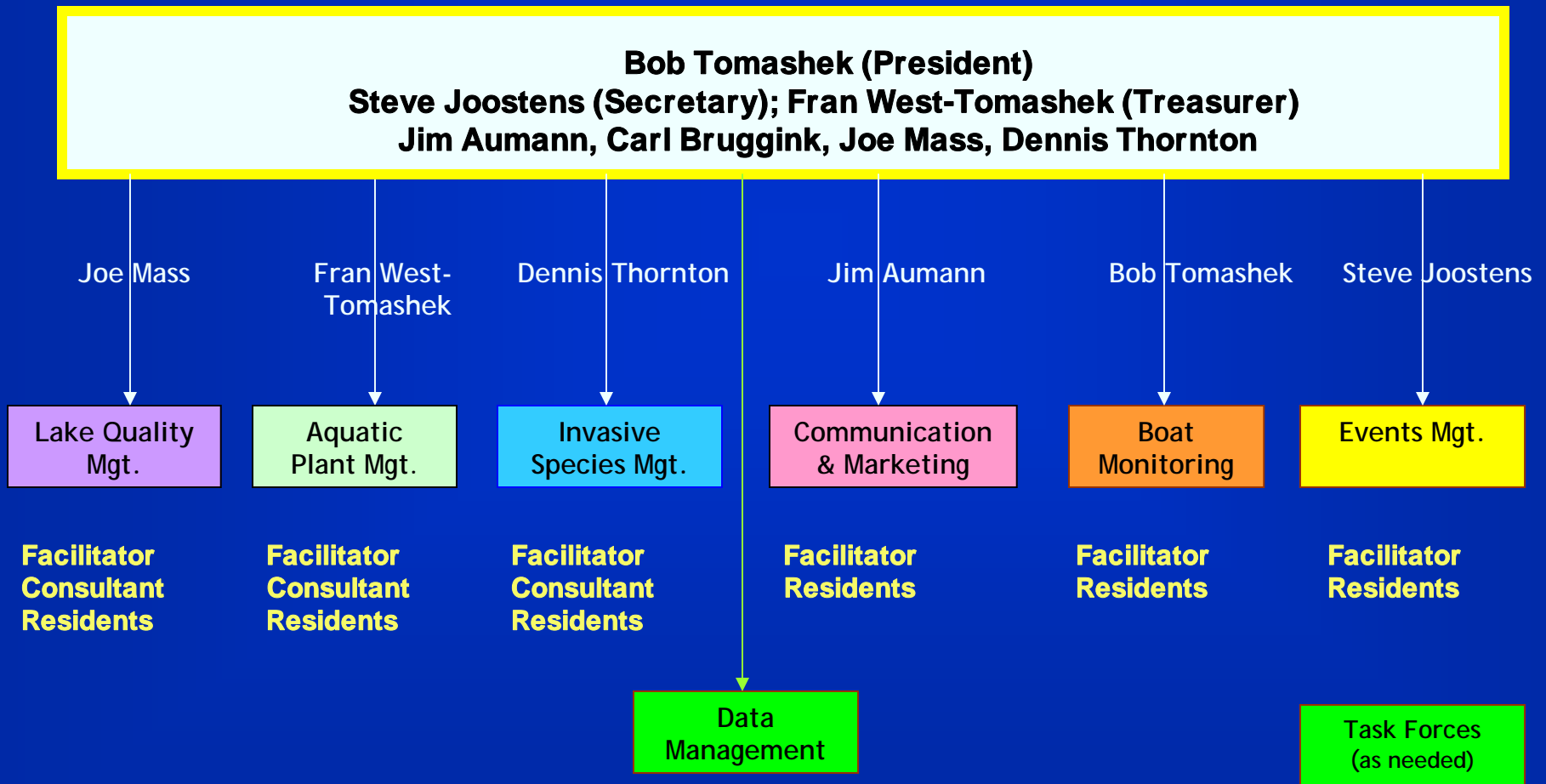
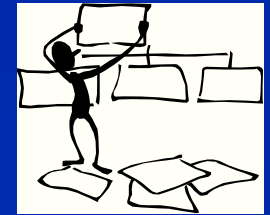
Organizational Structures



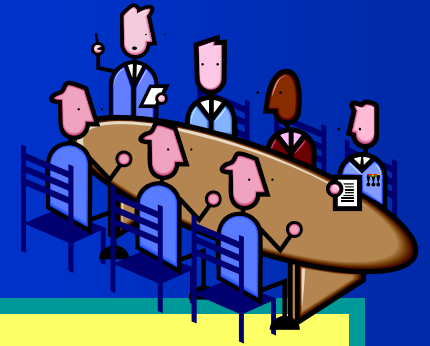
Implementation Design



CLOVERLEAF LAKES PROTECTIVE ASSOCIATION Organizational Chart 2006-07



Lessons Learned



1. **Ask for involvement.**
2. **Don't underestimate people's concern, interest, and expertise.**
3. **People will volunteer if mission is clear and they know what needs to be done.**
4. **Seek help from specialists.**
5. **Communicate, communicate, communicate.**
6. **Get lake association support/involvement.**
7. **Be persistent and adaptable.**
8. **Good facilitation helps.**
9. **Write grants.**

February, 2006

Dear Cloverleaf Lake Residents:

The project of authoring our own Lake Management Plan started with YOU!

About two years ago a survey appeared in our newsletter asking you, as lake residents, what your likes, dislikes, and concerns were regarding living on the Cloverleaf Lakes. We realized from your responses that in order to preserve those things you liked, (e.g. natural beauty, peace and quiet); manage those things that you disliked, (e.g. the high speed of some boats through the channel); and address your concerns, (e.g. excessive “weed” growth), a proactive long-term management plan would be needed. This plan needed to include management strategies that can be identified, implemented, amended as needed and perpetuated through the years.

It has been through the direction and in-depth study by lake residents and professional consultants that this product, Long-Range Comprehensive Lake Management Plan, is being presented to you. A special thanks goes to those who gave their time and energy to develop this plan.

**Bob Tomashek, President
Cloverleaf Lakes Protective Association**

Remember



Without data, you're just another person with an opinion.

People support what they help create.