



# Libraries University of Wisconsin-Stevens Point

Fall 2020

## Director's Message By Mindy King, Library Director

As the Fall semester and 2020 draw to a close I reflect upon the changes and upheaval we have experienced this year. I appreciate the resiliency and persistence I have witnessed across campus over the past several months as we worked and planned together to ensure the continued success of our students. In particular, I appreciate the team of library faculty and staff, who, despite the upheaval, doubled-down on our commitment to providing equitable and inclusive access to information and technology resources.

We live in a technology-rich world in which most of us have access to the infrastructure that made the switch to virtual learning possible. The recent NSSE Pulse survey demonstrated that 90% of our students have internet and the hardware they need to be successful, but that leaves 10% who do not. And the Libraries are here to fill that gap. In the Spring, even when the rest of campus closed down, the library staff continued to provide student

access to the hardware, software, wireless internet, printing, and safe spaces needed to continue their learning.

The Libraries also filled the information gap by emphasizing the vast array of electronic resources and services we have been providing for years. We worked closely with instructors to provide the ebooks, streaming video, and other electronic content needed to transition courses online. We worked with Text Rental to find electronic copies of books to make available to remote students. When purchasing restrictions were put into place, we prioritized orders critical to online, course-related student learning.

Libraries continue to be here to fill the gaps our students, faculty, staff, and community members might experience. We strive to provide equitable and inclusive access to our resources, services, and spaces, especially during times of change and upheaval.

### IN THIS ISSUE...

- Director's Message
- Branch Updates
- Annual Report
- Collection Update
- Equity, Diversity, Inclusivity
- Archives and Area Research Center
- Reference Help
- Congratulations Anne!!
- Upcoming Hours
- Thank You Students!
- Minds @UW
- Contact Us!

## Branch Campus Updates

### Marshfield

The UWSP at Marshfield library is displaying the Votes for Women: A Portrait of Persistence poster exhibit this Fall. These posters are part of the Smithsonian's traveling exhibition service and outline the more than 80-year movement for women to obtain the right to vote as part of the larger struggle for equality that continued through the 1965 Civil Rights Act and arguably lingers today. This exhibit can be viewed at the library or virtually via the [Hamilton Roddis Memorial Library Facebook page](#).

The library remains open through the fall semester from 9 a.m. - 3 p.m., Monday through Thursday and 8:00 a.m. – 1 p.m. on Fridays.

Look for information about an upcoming virtual screening of the film Just Mercy on December 16<sup>th</sup>

### Wausau

The UWSP at Wausau Library saw some changes over



the summer that gave it a different look for fall semester. Not only did new carpeting and roofing get installed, but the library's furniture was rearranged to accommodate social distancing guidelines. Also in this "remodel," a Virtual Classroom Area was created to provide a convenient and dedicated space on campus for students enrolling in virtual classes.

The library remained open over summer and fall and will continue to maintain hours from 8a.m.-4p.m., Monday-Friday after the Thanksgiving break for the remainder of the semester. Despite all the changes in the past few months, the library's view overlooking Marathon Park remained beautiful as autumn unfolded!

## Off Campus Access

Students, faculty, and staff can access library journals, databases, ebooks, and streaming videos from off campus. To access these resources, please go to the Library homepage (<https://www.uwsp.edu/library>) where there is a prompt to log on with your university login information before accessing resources. In addition, you can also link to library resources from Google Scholar by following [these directions](#).

## Collections Updates

**Search@UW Changes** - In January our main discovery tool, Search@UW, will be updated. Interface changes will be minor but bookmarks to this search tool will need to be updated.

### New Resources

- [Academic Search Ultimate](#): multi-disciplinary database providing information for nearly every area of academic study. Includes an enormous collection of the most valuable peer-reviewed full text journals, as well as additional journals, magazines, newspapers, and books. (Upgrade from *Academic Search Complete*)
- [Computer & Applied Science Complete](#): articles from scholarly and professional journals from the computing, technology, and engineering disciplines, with a focus on studying the business and social implications of new technology. (Badgerlink resource)
- [Coronavirus Research Database](#): provides coverage of the COVID-19 outbreak, by curating openly available content related to corona viruses.
- [JSTOR's Primary Source Collection](#): primary sources across four collections (Global Plants, 19th Century British Pamphlets, Struggles for Freedom: Southern Africa, World Heritage Sites: Africa), supporting research and teaching in the humanities, social sciences, and sciences. (Free access until June 30, 2021)
- [National Theatre Collection](#): a collection of high-definition streaming videos of world-class productions offered through a collaboration with the U.K.'s National Theatre. (UW System resource)

### Discontinued Resources

- 3D Printing
- ATLA Index
- Art & Architecture Source
- Biography Reference Bank
- Cambridge Structural Database
- 71 periodical subscriptions

### Department Allocations

Due to our current financial challenges, department allocations have been suspended. The Libraries are prioritizing orders critical to course-related student learning. Please submit these kinds of requests using the [library order form](#) to be reviewed by a librarian.

### Library Impact:

By The Numbers



Website Visits:  
189,309



Questions  
Answered: 3,973



Search@UW  
Queries:  
194,880



Library Instruction  
Attendees: 5,152



Items Circulated:  
51,318



Research Guide  
Views:  
31,137

## UWSP Libraries Annual Report

The Libraries began the 2019-2020 academic year with a focus on student engagement and in the Spring quickly pivoted to support the changing needs of campus due to the COVID-19 pandemic.

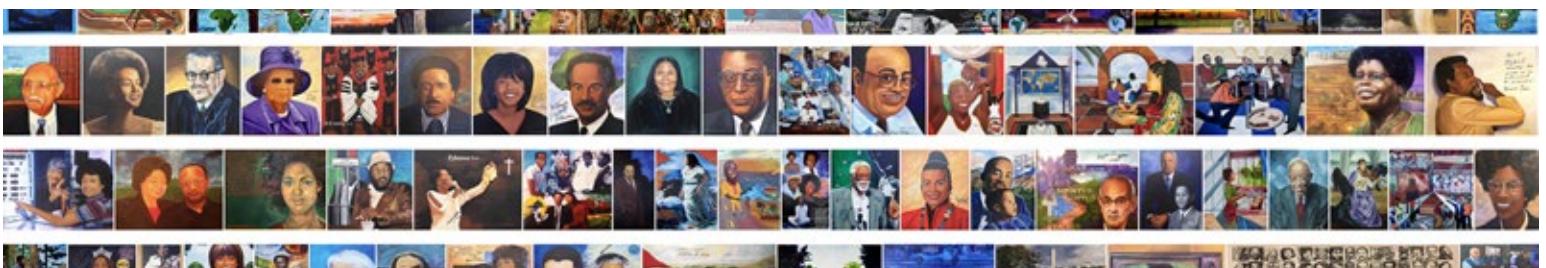
- We **connected** instructors to electronic content that could be easily embedded into Canvas to meet the immediate needs during the quick shift to virtual learning.
- We **engaged** users in new ways and shifted many of our events to virtual formats to reach wider audiences.
- We **supported** students who needed equitable access to technology resources in order to be successful in their courses. The UWSP Libraries were the last library in the UW System to close. And during the duration of Spring semester, public services staff continued to work in-person to facilitate technology access at all three locations in a safe and responsible way.
- We **collaborated** with each other in new and remote ways that strengthened communication across disperse locations and leveraged the creativity and expertise of all.

Visit the full [2019-2020 annual report](#) to read about the many other library accomplishments over the last year and our priorities going forward.

## Equity, Diversity, Inclusivity

The UWSP Libraries join the Council of University of Wisconsin Libraries in a [Statement of Solidarity and Support](#) for our Black, Indigenous, and People of Color (BIPOC) communities who are subject to discrimination, systemic oppression, and social injustice. Equity, diversity, and inclusion have long been important values to the Libraries, but current events are calling us to refocus our attention in this area. Efforts this semester have included:

- Allocated \$500 of the Libraries' foundation dollars to strengthen our ebook collection representing diverse and marginalized voices. These ebooks, along with additional resources, can be accessed via our [Racial and Social Injustice guide](#).
- Partnered with Diversity and College Access to support their campaign [Stand, Amplify, Speak against Racial and Social Injustice](#).
  - Co-sponsored the campus screening of the Netflix documentary "13<sup>th</sup>"
  - Provided library space to display the "I Am 400" banner, which depicts 69 paintings that detail 400 years of African American culture and history. The paintings were created by a father and son team, Jerome W. Jones Jr. and Jeromyah Jones



## Archives and Area Research Center

The Archives is open by appointment only. Appointments are required for all in-person research. Please contact the Archives at [archives@uwsp.edu](mailto:archives@uwsp.edu) or 715-346-2586 to schedule a time to visit. Limited digital resources may be accessed via the [Digital Collections](#), and we encourage reference questions to be submitted via email when possible.

### New Digital Collections

The [Coronavirus Impact at UWSP](#) collection is an ongoing and evolving digital collection that includes announcements, correspondence, data, and policies related to the COVID-19 impact on UWSP. Contact [archives@uwsp.edu](mailto:archives@uwsp.edu) with questions or collection contributions.

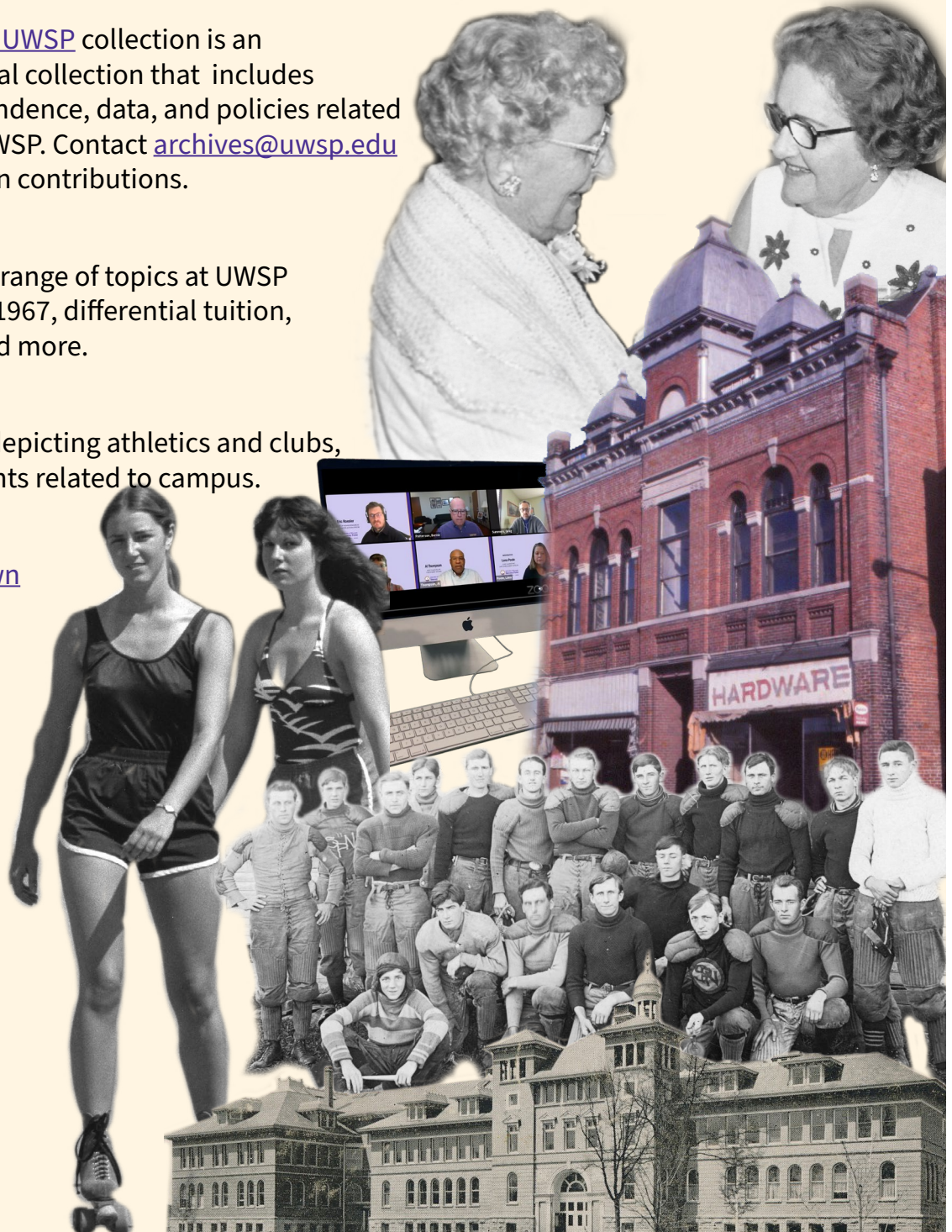
[Subject files](#) cover a broad range of topics at UWSP including the beer riots of 1967, differential tuition, LGBTQ issues, mascots, and more.

A variety of [UWSP photos](#) depicting athletics and clubs, buildings, faculty, and events related to campus.

Records from the [Downtown Action Committee](#) responsible for downtown planning during the 1970s and 1980s.

[Ethnic and Minority Center records](#) are three series based on African Americans, civil/human rights, and Native Americans.

[Campus News Releases](#) from 1964-2015.



## Congratulations And Best Wishes To Anne Swenson!!!



Anne Swenson will be retiring at the end of December after 37 years of service to the library and the university. Anne works in the Acquisitions department and coordinates all order requests for library materials and thesis binding. Anne's talent and creativity have been put to use with organizing open houses, conferences, countless displays, and other library events. Anne has been a long-time member of the university's Historic Preservation Committee. She has been the recipient of the prestigious Carolyn Rolfsen Sargis award and recently received a University Service award for her contributions to the celebration of UWSP's 125th anniversary.

We thank Anne for her tireless energy over the years and wish her the very best in retirement!!

### #aworldofhearts

By Anne Swenson

Everyone's lives changed with Covid-19.

The way we work.

The way we shop.

The way we breathe (with masks).

A little bit of joy came out of how our new normal is.

#aworldofhearts entered my life.

We made a purple and gold (school colors) large heart on our computer lab windows.

More heart flowers were put on windows that people walked by.

Hearts that people could see "we care."

Just a little bit of love (hearts) to make someone smile.





## Thank You To Our Student Workers!

Our UWSP Libraries provide books, movies, journals, e-resources, technology, space, and assistance to students, faculty, and community members across three campuses and beyond. This access is made possible not only by the efforts of our librarians and library staff, but by the incredible efforts of the student workers at our three campus locations. They help us run smoothly at all levels, from Acquisitions and shelving to Interlibrary Loan, Archives, and Circulation.

In a year of unprecedented challenges, our library student workers have stepped up to ensure that their peers and professors retain vital academic services, including bridging the gap between our remote services and students in need. They have ensured our collections remain organized and accessible and our spaces open and welcoming even as life outside our campuses has locked down and pulled away. Their professionalism, leadership, creativity, and empathy exemplify the best of UWSP in spirit and practice.

**MINDS @ UW**

**MINDS@UW –  
SHINING A LIGHT ON STUDENT RESEARCH**

The Libraries have partnered with the College of Letters and Science to preserve student research and make it discoverable worldwide across platforms such as Search@UW and Google Scholar. Visit the new [COLS Undergraduate Symposium Collection](#) to view this showcase of student and faculty collaborative research projects.

### **UWSP's First Doctoral Dissertation Deposited into the Libraries' Collections**

Belinda Rudinger EdD

“Beyond Access: Technology, Blindness, and Self-Determination”

Doctor of Education, Educational Sustainability

Approved on March 30, 2020

<https://minds.wisconsin.edu/handle/1793/80185>

# Are you ready for Finals? Librarians are here to help!

**Email:**

Librefd@uwsp.edu

**Chat:**

www.uwsp.edu/library/chat

**Call:**

715-346-3542

**Text:**

715-602-3542

"I am looking for sources about different historical approaches to mental health reform that is heavily based on primary sources but am struggling to find any."

"I'm doing a speech on UWSP policy 22, which is the Accommodation of Religious Beliefs. I'm wondering if there are any articles about it that I can include in my research."

"I am looking for an article about the Beatles that is fairly short and accessible to a wide variety of reading levels. Do you have any resources you could direct me towards? Thanks!"

"I need some help finding good articles to use for a research proposal on different types of cults in the US."

"Hello, I am struggling to find newspaper articles on the right wing's reaction to Waco from 1993. Do you think you could help me out?"

**How Can I Help?**

"I need sources to help me define the informal economy and discuss how the implementation of the structural adjustment programs in sub-Saharan Africa has spurred its growth."





## Upcoming Library Hours

### Albertson Hall

(Stevens Point Campus)

### December

Sunday	Monday	Tuesday	Wednesday	Thursday	Friday	Saturday
		<b>1</b> 7:45am- 8:00pm	<b>2</b> 7:45am- 8:00pm	<b>3</b> 7:45am- 8:00pm	<b>4</b> 7:45am- 5:00pm	<b>5</b> Closed
<b>6</b> Noon- 8:00pm	<b>7</b> 7:45am- 8:00pm	<b>8</b> 7:45am- 8:00pm	<b>9</b> 7:45am- 8:00pm	<b>10</b> 7:45am- 8:00pm	<b>11</b> 7:45am- 5:00pm	<b>12</b> Closed
<b>13</b> Noon- 8:00pm	<b>14</b> 7:45am- 8:00pm	<b>15</b> 7:45am- 8:00pm	<b>16</b> 7:45am- 8:00pm	<b>17</b> 7:45am- 8:00pm	<b>18</b> 7:45am- 5:00pm	<b>19</b> Closed
<b>20</b> Closed	<b>21</b> 7:45am- 5:00pm	<b>22</b> 7:45am- 5:00pm	<b>23</b> 7:45am- 5:00pm	<b>24</b> Closed	<b>25</b> Closed	<b>26</b> Closed
<b>27</b> Closed	<b>28</b> Closed	<b>29</b> Closed	<b>30</b> Closed	<b>31</b> Closed		

### January

Sunday	Monday	Tuesday	Wednesday	Thursday	Friday	Saturday
					<b>1</b> Closed	<b>2</b> Closed
<b>3</b> Closed	<b>4</b> 7:45am- 5:00pm	<b>5</b> 7:45am- 8:00pm	<b>6</b> 7:45am- 8:00pm	<b>7</b> 7:45am- 8:00pm	<b>8</b> 7:45am- 5:00pm	<b>9</b> Closed
<b>10</b> Closed	<b>11</b> 7:45am- 5:00pm	<b>12</b> 7:45am- 8:00pm	<b>13</b> 7:45am- 8:00pm	<b>14</b> 7:45am- 8:00pm	<b>15</b> 7:45am- 5:00pm	<b>16</b> Closed
<b>17</b> Closed	<b>18</b> Closed	<b>19</b> 7:45am- 5:00pm	<b>20</b> 7:45am- 5:00pm	<b>21</b> 7:45am- 5:00pm	<b>22</b> 7:45am- 5:00pm	<b>23</b> Closed
<b>24</b> Closed	<b>25</b> 7:45am- Midnight	<b>26</b> 7:45am- Midnight	<b>27</b> 7:45am- Midnight	<b>28</b> 7:45am- 9:00pm	<b>29</b> 7:45am- 5:00pm	<b>30</b> 9:00am- 5:00pm
<b>31</b> Noon- Midnight						

## Mission

The Libraries are an innovative partner in the learning community and an active participant in promoting the University's goals of teaching, learning, scholarship and community outreach. The Libraries provide quality academic services and resources that foster intellectual curiosity, promote critical inquiry, and encourage awareness of an increasingly diverse and global environment.

## Contact Us !

The faculty and staff of the UWSP Libraries look forward to serving you from all three of our locations!

### Marshfield:

715-389-6512  
lpetri@uwsp.edu

### Stevens Point:

715-346-2540  
librefd@uwsp.edu

### Wausau:

715-262-6220  
rwallin@uwsp.edu



## Supporting the Libraries

The UWSP Libraries welcome gifts and donations to support library collections and services. Your gift will support both current and future students, faculty, staff, and researchers, as well as Central Wisconsin's educational and cultural community.

[Give the Gift of knowledge today!](#)



Libraries  
University of Wisconsin-Stevens Point