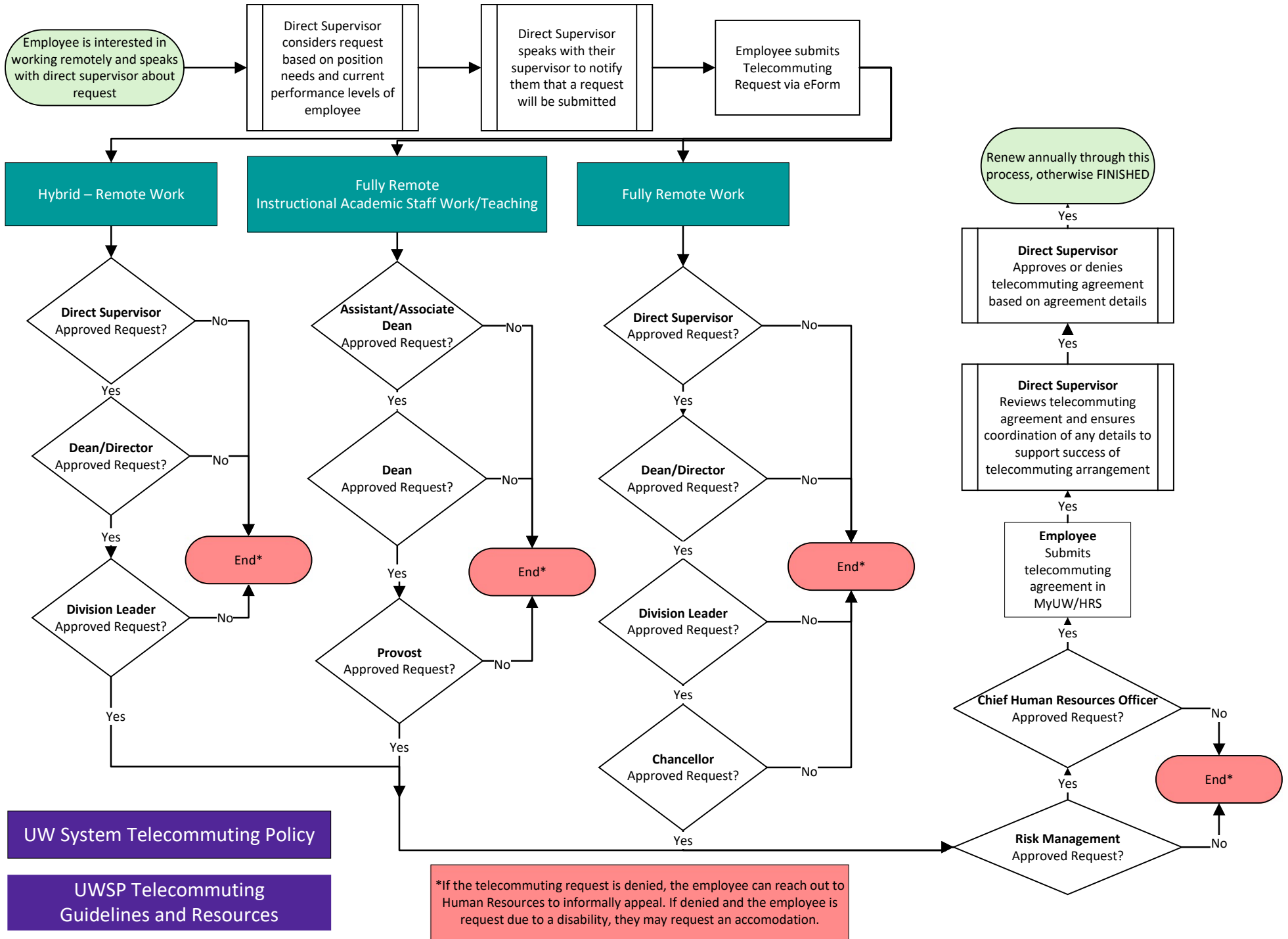


# UWSP Telecommuting Request and Agreement Workflow

(Resubmitted and reviewed annually using this process)



UW System Telecommuting Policy

UWSP Telecommuting Guidelines and Resources

\*If the telecommuting request is denied, the employee can reach out to Human Resources to informally appeal. If denied and the employee is request due to a disability, they may request an accomodation.