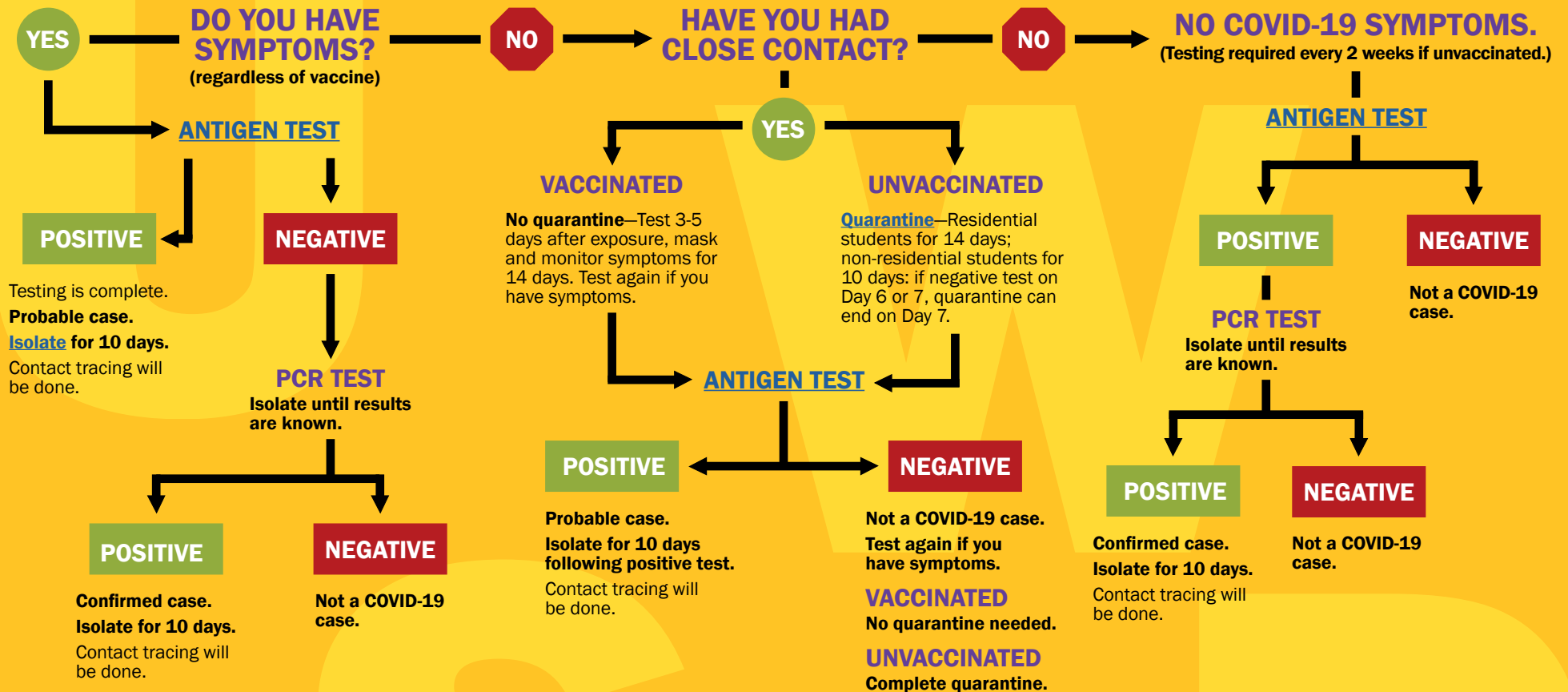


FALL 2021 UWSP COVID-19 TESTING PROTOCOL



University of Wisconsin
Stevens Point

STEVENS POINT • MARSHFIELD • WAUSAU



You are considered a **CLOSE CONTACT** if you were within 6 feet of a person who has COVID-19 for 15 minutes or more (regardless of masking), if you had direct exposure to the person’s cough, sneeze or other direct physical contact, or if you care for, live with or stayed in the same household. Students identified as close contacts in classrooms will be notified about the need to quarantine. If you are not contacted, you do not need to quarantine.

CONTACT TRACING—Health Department contact tracers—including 2 employed at UWSP—interview people with confirmed COVID-19 to identify those with whom they had close contact who may be exposed to the virus. Contact tracing in classrooms is based on seating charts, faculty input and conversations with the student who tests

positive. If there is no seating chart in Canvas or if something is unclear, faculty are contacted directly for assistance.

SELF-REPORTING—If you have a confirmed COVID-19 case, [report it](#) using the form at [uwsp.edu/coronavirus](#). This helps you receive appropriate guidance and prevents further spread of COVID-19.

CONFIRMED CASES—EXEMPT from testing, quarantine for 90 days. Report prior COVID-19 diagnosis within 90 days to the [COVID hotline](#).

PROBABLE CASES—NOT exempt from testing or quarantine.