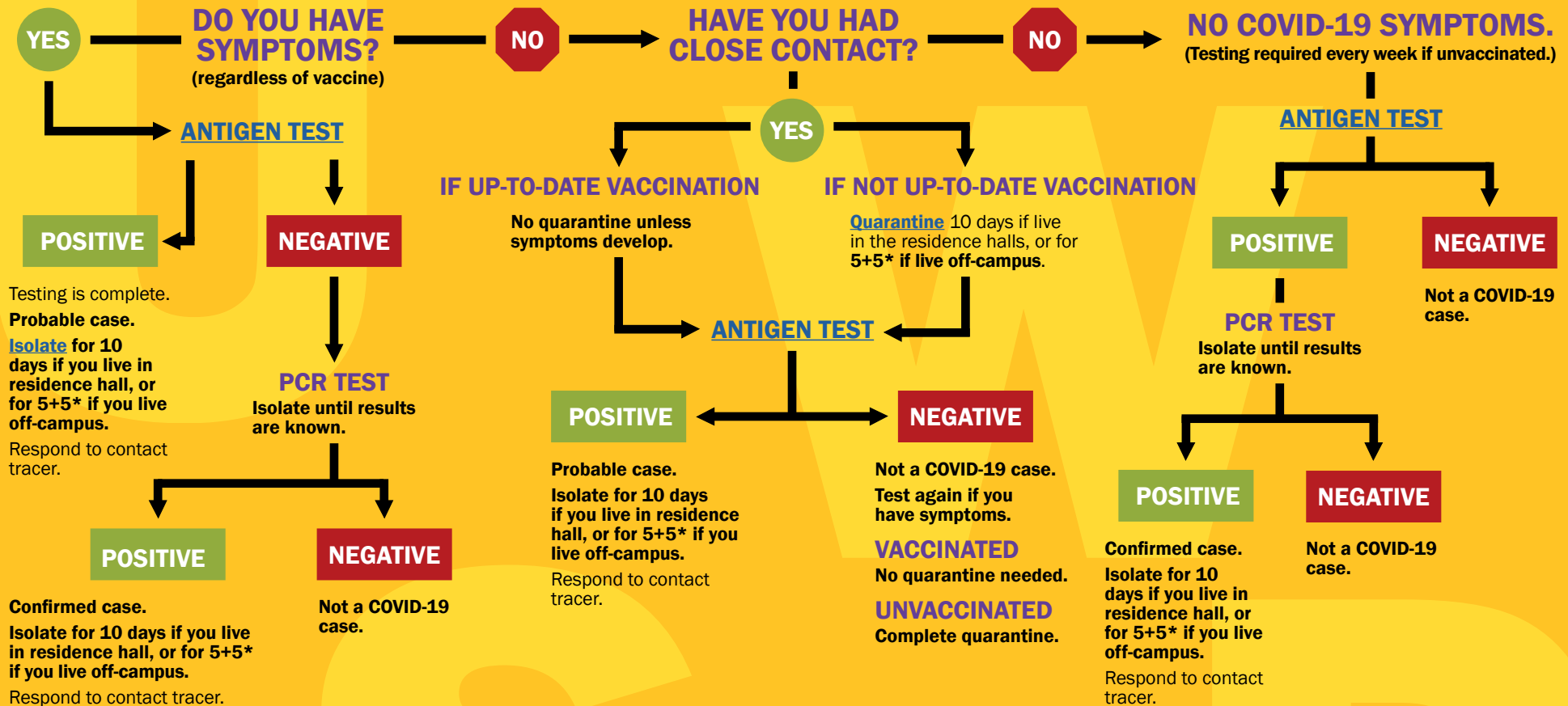


SPRING 2022 UWSP COVID-19 TESTING PROTOCOL



University of Wisconsin
Stevens Point

STEVENS POINT • MARSHFIELD • WAUSAU



***5+5 = stay home for at least 5 full days. If symptom-free after 5 days, wear well-fitted mask everywhere for additional 5 days. Watch for symptoms for 10 days.**

DETERMINING QUARANTINE IF CLOSE CONTACT: If up-to-date with COVID-19 vaccinations (includes booster), no quarantine is needed unless symptoms develop. Get tested 5-7 days after close contact occurred.

If not up-to-date with COVID-19 vaccinations (no booster or unvaccinated), quarantine 10 days if live in the residence halls, or **5+5* if live off-campus.**

DETERMINING ISOLATION IF TEST POSITIVE: Isolate for 10 days if you live in residence halls, or **5+5* if you live off-campus, regardless of vaccination status.**

If **5+5*** individuals have no fever or other symptoms after isolating 5 full days, they may return to class or work with a well-fitted mask for 5 additional days.

Notify your **CLOSE CONTACTS** – A helpful guide is [here](#).

CONTACT TRACERS interview people with confirmed and probable COVID-19 cases.

SELF-REPORTING – If you have a positive test (antigen or PCR), are awaiting test results or if you have been identified as a close contact, [report it](#) using this form.

CONFIRMED CASES—EXEMPT from testing, quarantine for 90 days. Report prior COVID-19 diagnosis within 90 days to the [COVID hotline](#).

PROBABLE CASES—NOT exempt from testing or quarantine.