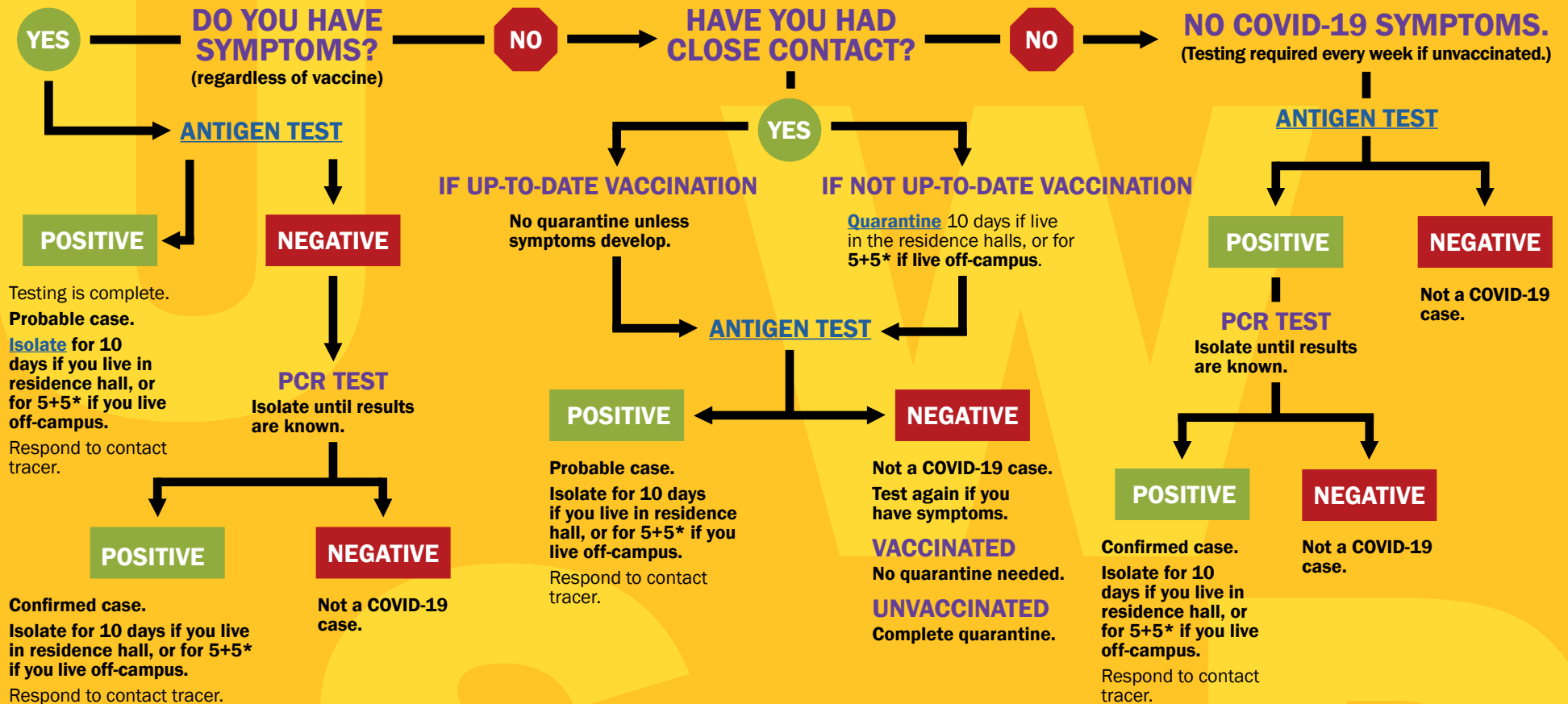


# SPRING 2022 UWSP COVID-19 TESTING PROTOCOL



University of Wisconsin  
Stevens Point

STEVENS POINT • MARSHFIELD • WAUSAU



**\*5+5 = stay home for at least 5 full days. If symptom-free after 5 days, wear well-fitted mask everywhere for additional 5 days. Watch for symptoms for 10 days.**

**DETERMINING QUARANTINE IF CLOSE CONTACT:** If up-to-date with COVID-19 vaccinations (includes booster), no quarantine is needed unless symptoms develop. Get tested 5-7 days after close contact occurred.

If not up-to-date with COVID-19 vaccinations (no booster or unvaccinated), quarantine 10 days if live in the residence halls, or **5+5\* if live off-campus.**

**DETERMINING ISOLATION IF TEST POSITIVE:** Isolate for 10 days if you live in residence halls, or **5+5\* if you live off-campus, regardless of vaccination status.**

If **5+5\*** individuals have no fever or other symptoms after isolating 5 full days, they may return to class or work with a well-fitted mask for 5 additional days.

**CLOSE CONTACT** in classrooms will be notified if they need to quarantine.

**CONTACT TRACERS** interview people with confirmed and probable COVID-19 to identify close contacts. In classrooms, contact tracing is based on seating charts. Faculty are contacted if no seating chart is in Canvas.

**SELF-REPORTING**—If you have a confirmed COVID-19 case, [report it](#) using the form at [uwsp.edu/coronavirus](http://uwsp.edu/coronavirus).

**CONFIRMED CASES—EXEMPT from testing, quarantine for 90 days.** Report prior COVID-19 diagnosis within 90 days to the [COVID hotline](#).

**PROBABLE CASES—NOT exempt from testing or quarantine.**