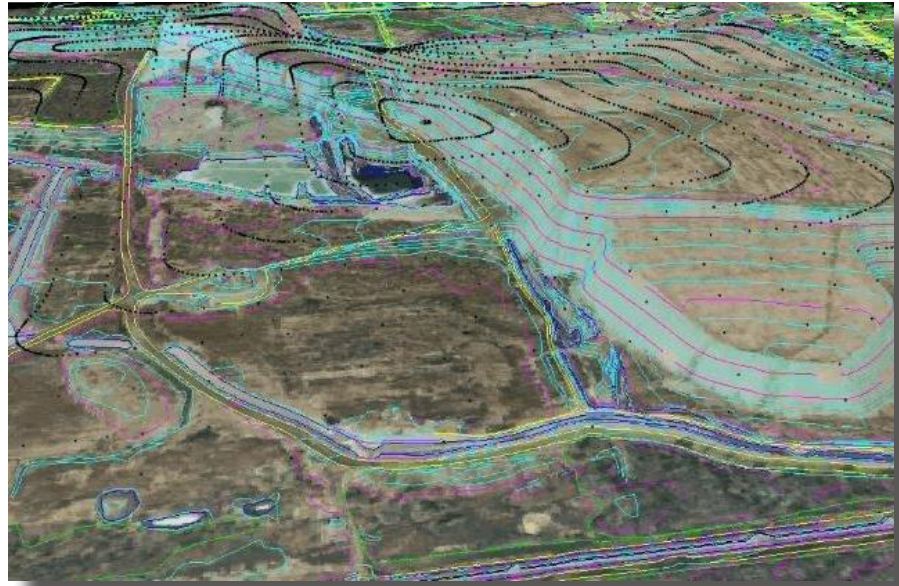


Volumetrics

Benefits of aerial surveying:

- The entire surface of a land form, stockpile, or landfill can be measured safely and accurately
- Less expensive than ground surveys
- Allows for multiple sites to be photographed per flight mission
- Allows reconciliation of all sites to a given point in time
- Control can be set once and used subsequently for many years
- After control is set, there is no need to visit the site again
- Safety and accuracy is improved compared to land-based surveys
- Accuracy is better managed compared to LiDAR surveys

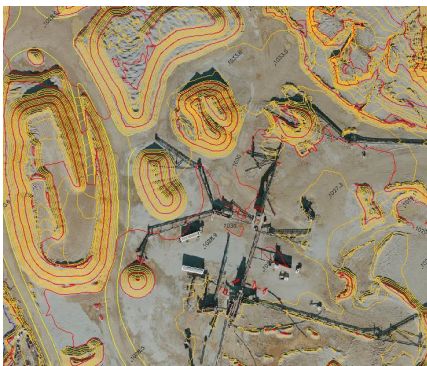


Air-Land Surveys' services include aerial photography, photogrammetric mapping, digital orthophotography, volumetric reporting, and project management.

Our accurate and periodic volumetric calculations and support is used for:

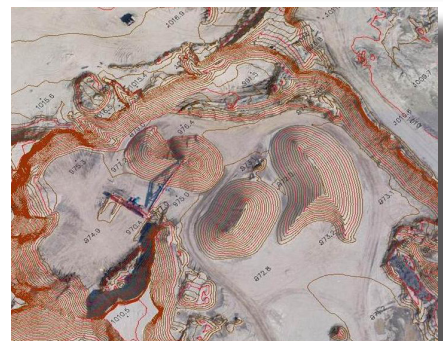
- Inventory management
- Annual tax reporting
- Progress reporting
- Third-party verification

Depending on the nature of the area to be measured, it may be impractical or impossible for a land surveyor to physically occupy all locations needed to properly depict the terrain and produce accurate volumetric analysis. Steep and/or deeply furrowed banks can be impossible to properly measure from the ground, but can be easily and safely measured from the air.



Volumes are in cubic yards

PA# 40 =	1,658
PA# 00 =	2,804
PA# 01 =	24,911
PA# 52 =	27,359
PA# 54 =	4,041
PA# 55 =	1,045
PA# 59 =	3,887
PA# 87 =	3,270
PA# 08 =	722
PA# 59 =	13,071




AIR-LAND SURVEYS

1.800.447.1627
www.airlandsurveys.com