

## Topographic Mapping

Air-Land Surveys has worked with a wide variety of clients, including:

- Surveyors
- Engineers
- Architects
- Developers
- Utility companies

We have assisted these clients on a wide variety of projects, including:

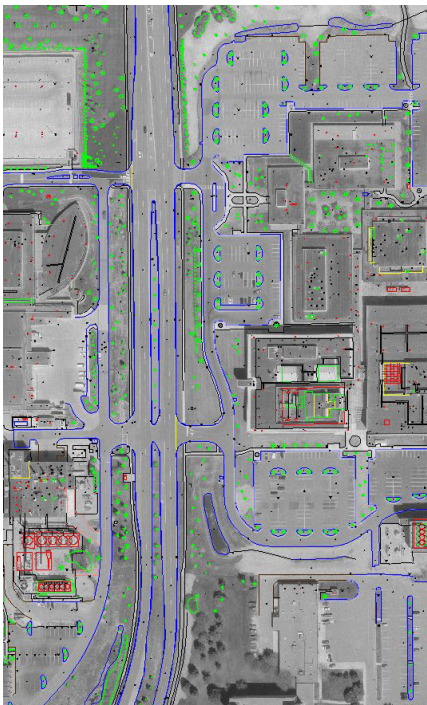
- Water and sewer plants and lines
- Electrical and gas utilities
- Railroads
- Airports
- Shopping malls
- State DOTs
- Landfills
- Quarries
- Colleges
- Hospitals
- Manufacturing plants



Topographic mapping is required by a wide variety of clients and is needed to show all manmade, non-terrain and terrain features into a printed or CAD mapping format. Our staff compiles these features from aerial photographs under the direction of ASPRS-certified photogrammetrists. Map scale and contour intervals are determined prior to the aerial photographic mission and are then compiled to meet the required mapping accuracy.

- Planimetric mapping depicts all non-terrain features on a unique CAD layer as required by the client.
- Digital Terrain Models (DTM) are compiled for contour generation using breaklines and mass points.
- 3D plan and topographic mapping provides accurate positioning in all three dimensions X,Y,Z.

- Stereo photogrammetry is compiled on softcopy and analytical instruments depending on the client's required accuracy
- All mapping is created to comply with National Map Accuracy Standards or ASPRS class I, II, or III standards.
- Our mapping services are provided in a variety of delivery formats, including AutoCAD, MicroStation, DXF, and ESRI, and are commonly delivered on a variety of external hard drives: CD-ROM, DVD, or via our FTP site.



  
**AIR-LAND SURVEYS**

1.800.447.1627  
[www.airlandsurveys.com](http://www.airlandsurveys.com)