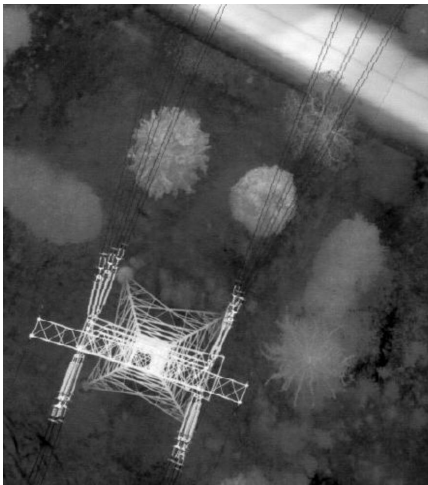
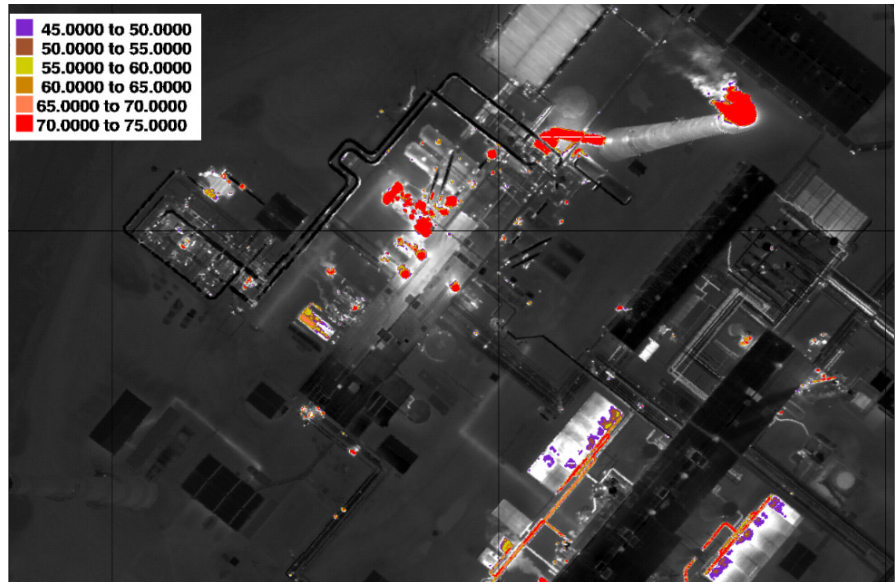


## Infrared Thermal Mapping

We offer aerial thermography for the management of several different industry applications, including:

- Building heat loss
- Building roof failures
- Steam leak detection
- Water leak detection
- Pollution/outflow detection
- Pipeline surveys
- Oil spills
- Forest fire mapping, hot spot detection
- Electrical transmission hot spot detection
- Animal surveys



Thermal imaging cameras are designed to detect the heat all objects radiate. The images and videos produced from thermal cameras and sensors are called thermograms.

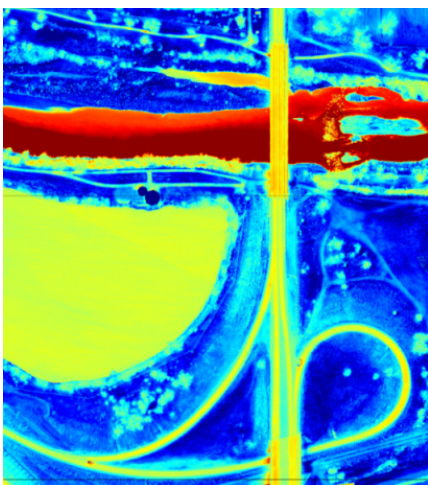
In a thermogram, cold objects usually appear dark and hot objects look bright. The ability to make a “photographic” distinction between hot and cold objects provides a great opportunity for asset management.

By conducting thermal surveys from a fixed-wing aircraft, we have the ability to cover large areas, or several smaller areas separated by many miles, in a single flight.

We choose the optimal time of day or night to conduct each survey depending on the condition that is to be measured. Thermal surveys are usually conducted shortly after sunset to remove the sun’s active heating from the measurement process.

Surface winds are generally calm at this time of day, which improves our ability to accurately measure thermal differences in the environment.

Examples of when a thermogram could be helpful are: if a leaky roof or wet insulation is suspected; to detect leaks in pipes; and to locate sources of pollution or outflows that are entering lakes and rivers.



  
**AIR-LAND SURVEYS**

1.800.447.1627  
[www.airlandsurveys.com](http://www.airlandsurveys.com)