



# AIR-LAND SURVEYS

540 S. Saginaw Street, Suite 200  
Flint, MI 48502  
1.800.447.1627  
www.airlandsurveys.com

## Aerial Photography & Mapping

### Licensed Professionals

Certified Photogrammetrists  
Certified Planners  
Professional Engineers  
Professional Surveyors

### Equipment and Specifications

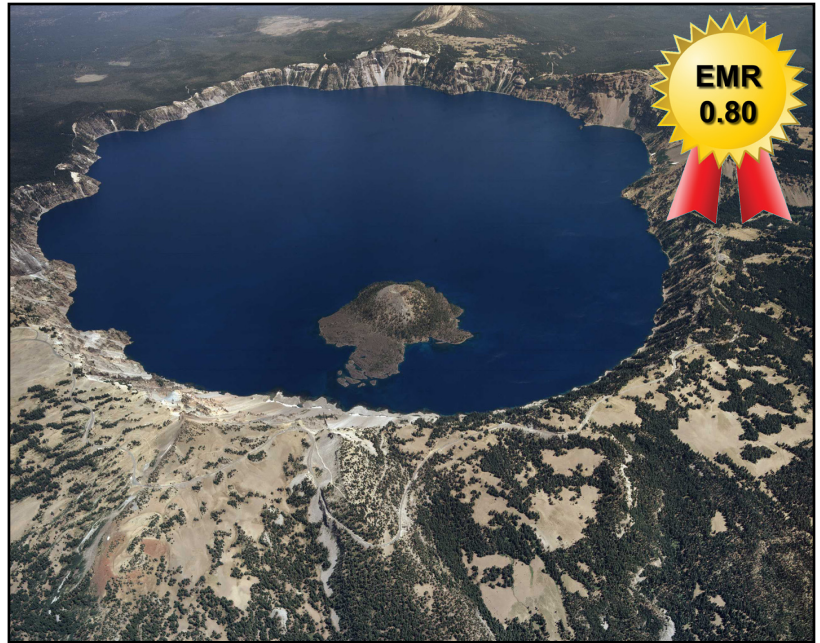
UAS Photography and Mapping  
DAT/EM Softcopy  
Boeing Softcopy  
KLT ATLAS Softcopy

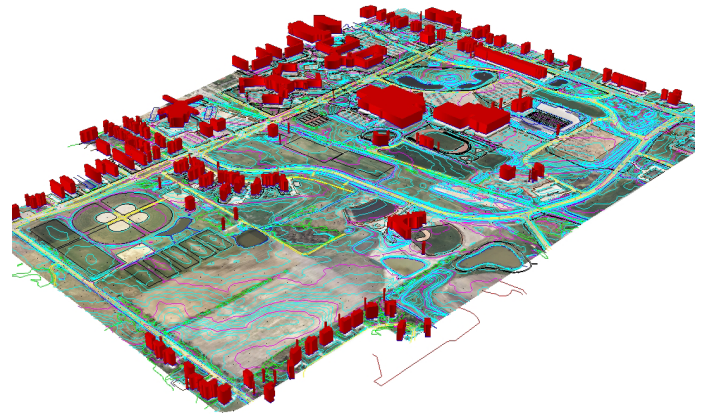
### Professional Services

GPS Photo Acquisition  
Black/White, Color, InfraRed Photography  
Vertical and Oblique Photography  
Photo Enlargements  
Aerial Triangulation  
Topographic Mapping  
DTM-DEM Surface Modeling  
Volumetrics  
Airport Surface Analysis  
Digital Orthophotography  
GIS Base Mapping  
Architectural  
Boundary Surveys  
Aerial Control  
Lake Surveys

### Geographic Territories

United States and Canada





Since its founding in 1967, Air-Land Surveys (ALS) has demonstrated a track record of success with clients across the United States. ALS has mapped more than seven million acres and completed more than 8,000 projects.

From California to Boston; Canada to Puerto Rico, ALS has the skills and capabilities to produce top-quality products and service for any North American location.

ALS employs skilled, licensed professionals to meet every business need. Each project is managed with the guidance of a certified photogrammetrist, who ensures your project is completed in a timely, accurate and cost effective manner.

*Whatever your project requirements,  
you can trust ALS.*



For more information, contact  
**Denny Sauers, Jr., CP, PPS**  
 Cell: 616.265.2093  
 Email: [DSauers@airlandsurveys.com](mailto:DSauers@airlandsurveys.com)