



PART 5



Additional Issues

Survey, Subdivision & Development Issues Affecting Surveyors

- Drainage (AREMA C-1) ...the value of railroad profile maps
- Railroad Industrial Development
 - Bad design in industrial parks/plats lead to future grief
 - Almost all the Class 1's have design specs/standards on the web (Shortlines may adopt Class 1 Standards as spin-offs)
- Fencing & gates (AREMA C-1) & Wisconsin State Statute 192.33
- Pipeline & wireline crossings (AREMA C-1, C-28, C-26)
- Bridge basics & abbreviations (AREMA C-18, C-4 and others)
- Cross section (cut & fill typical example)



CATENARY = WIRE SYSTEM

INTERURBAN vs COMMON
CARRIER INTERPRETATION

Lease & Contact (AREMA C-1)

- Control & Risk
- Railroad Specifications
- Easements run with the land/leases-contracts-permits **do not!** Railroads want accountability! (easements won't provide that)

Please beware of the trend by some railroad operating departments to delegate these duties to outside railroad contractors.(PSR IS CAUSING MORE OF THIS)

- BNSF uses JONES LANG LASALLE (JLL)/Bartlett & West/RailPros
- NS uses DMJM/Harris, AECOM, RailPros, UPRR using AECOM, RailPros
- WATCO uses IMGONLINE and others
- RAMS used by multiple shortlines

Contract documents & forms commonly now show up on the web. *Lots of problems encountered with owner/developers waiting for the last minute to submit lease documents for approvals. Submit these documents as early and as complete as possible! Double-check the details.*

RAILROAD CONTRACTS

- Almost all railroad lease & contract documents will not be found at the county clerk & recorder's office.
- The private surveyor's challenge is to find copies of these documents, usually from the land-owner.
- Most railroads will only release copies of their contract documents unless there is a request from the licensee. (Privacy and confidentiality issues)Those railroad contract numbers found in research are often “gold”.
- Title lawyers and real estate people/ landmen are famous for overlooking having contracts assigned.

PERMITTING (Jim Goff/ BNSF)

Form 1496
VIC C. R. I. & P. RY. CO.
 This document belongs
 In the Division: *Permitting*

Indeed: Supplement to No. *2834-943*

Secretary's No. _____
 Supplement to No. _____

The Chicago, Rock Island and Pacific Railway Company
 IN AGREEMENT WITH
City of Colorado Springs

Relative to *gas pipe line - Kings and Colorado Ave. & Kent*

Dated *Nov. 25, 1930* *Reswell, Colo.*

Expire _____
 Copies:
 3 - Vice Pres. and Gen. Auditor
 3 - Gen. Manager
 3 - Supt. Colorado Springs Div.
 1 - Chief Eng'g.
 1 - Supt. Telegraph
 1 - Manager Mail Train

Distributed: *JAN 8 '31*

Remarks: _____



PROFESSIONALS
 know their jobs so well that
 safety becomes second nature ...
OR DOES IT?

BNSF / KCSR

A professional looking at a large log.

PERMITTING / LEASE/LICENSE/CONTRACT

MAJOR STUMBLING BLOCK FOR UTILITIES & PIPELINES

- INSURANCE FAILURES
- LAST MINUTE CHANGES
- FAILURE TO INCLUDE 45-90 DAY PROCESSING TIME
- RAILROADS ARE **NOT** GOING TO RUBBER STAMP THE PROCESS AT THE LAST MINUTE
- FAILURE TO HEED RAILROAD DESIGN STANDARDS
- CONTRACTORS ARE PART OF THE PROCESS
- EASEMENTS ARE HIGHLY UNLIKELY, YET PIPELINE AND OTHER UTILITIES CONTINUE TO ASK FOR THEM
- MUNICIPAL AND COUNTY FAILS (CHARTERS AND ORDINANCES MAY NOT APPLY TO RAILROAD R/W)

PLEASE REMEMBER

- (1) Right-of-Way on a railroad means “the property” (Easement, Fee, Ordinance, Charter, Grant, etc.)
- (2) CONTRACTS RUN WITH THE INDIVIDUAL, EASEMENTS RUN WITH THE LAND.



DO NOT CONFUSE **EASEMENT** WITH ANY OTHER COLOR OF TITLE ON RAILROAD R/W. “EASEMENT” IS A HORRIBLY ABUSED TERM, ESPECIALLY BY TITLE ATTORNEYS, ENGINEERS AND LANDMEN (ALL SHOULD KNOW BETTER) IN TERMS OF GRANT R/W.

Plainfield, IL 6-30-17 (CN-WC) NW Chicago Area



CN vs NICOR (20" Gas Line)

- unauthorized jack & bore
- 40 car crude oil derailment



Survey Operations

Topographic Mapping and Plan Sets to Communicate with Railroad Engineers

MODULE 11

- What the railroads want to see (simplicity, eliminate the clutter)
- Use graphical symbols railroads use in graphical presentations
- Level of detail

Field Surveying Operations

Field Construction Layout Staking

MODULE 13

- Safety Considerations
- Intervals (especially curves (Tamper Points) and turnouts
- Gradelines and key points to identify
- Setting stakes a track foreman can identify and actually use
- AREMA C-24 and Practical Guide

The Abandonment Issue and ICC/STB

Abandonment

MODULE 14

- Abandonment vs. Embargo vs. Out-of-service
- Who is the final arbiter?
- NITU/ Rails to Trails / Rail banking
- Adverse abandonment
- Abuses of the system that affect surveyors
- What happened between 1980 and 1983 with the ICC that affects railroad mapping data as sought by surveyors

The Abandonment Issue

- Is it abandoned, embargoed or out of service?
- 49 USC 10903....Abandonment Regulations
- 49 USC 10502....Prior Approval Conditions For Abandonment
- National Trails Systems Act 16 USC 1247 (Rails to Trails)
- Principal of Adverse Abandonment (STB Creede & Yakima Valley cases)
- The ICC/STB Dockets For Abandonment (AB- & FD- Prefixes)
- 1996 to Present on-line, on the WEB www.stb.dot.gov
- 1975-1996 at the STB/ICC Library in Washington
- Pre-1975 (1873-1975) Filed At National Archives, Rockville MD
- PLSC and the Trinidad Railway Abandonment Case (AB-573 O X)

THE POWER OF THE ICC/STB

- THE ABANDONMENT ISSUE
 - POWER OF AN ADMINISTRATIVE LAW JUDGE
 - CONTROL OF ALL MERGERS, LINE SALES
 - CONTROL OF LEASES, TRACKAGE RIGHTS
-
- ALSO CONTROL REGULATED WATER TRANSPORTATION, INTERCITY BUS LINES AND OTHER COMMON CARRIER TRANSPORTATION

FEDERAL REGULATION / PRE-EMPTION

The Cautiously Guarded Railroad Trump Card

(b) The jurisdiction of the Board over--

(1) transportation by rail carriers, and the remedies provided in this part with respect to rates, classifications, rules (including car service, interchange, and other operating rules), practices, routes, services, and facilities of such carriers; and

(2) the construction, acquisition, operation, abandonment, or discontinuance of spur, industrial, team, switching, or side tracks, or facilities, even if the tracks are located, or intended to be located, entirely in one State,

is exclusive. Except as otherwise provided in this part, the remedies provided under this part with respect to regulation of rail transportation are exclusive and preempt the remedies provided under Federal or State law.

49 USC 10501

-in essence, no local or state law supersedes the authority of the Surface Transportation Board (formerly the Interstate Commerce Commission)

-Federal Rule

STB/ICC TERMS TO RECKON WITH:

- **ABANDONMENT (AB & FD Dockets)**
- **EMBARGO**
- **DISCONTINUANCE OF SERVICE**
- **NITU/RAILBANKING (Notice of Interim Trail Use)**
- **ADVERSE ABANDONMENT**
- **OFA/ OFFER FOR ASSISTANCE**
- **SDM/ System Diagram Map**
- **EP/ Ex Parte (Rulemaking/Review/Hearing process)**
- **DIRECTED SERVICE ORDER**

Abandonments

AB = Abandonment Docket (Post 1976)

FD = Finance Docket (Mergers, Sales, New Construction, Abandonments (1887-1976))

NOR = Notice of Rulemaking/ Regulation

EP=Ex Parte Hearing

SDM=System Diagram Map (identifies potential abandonment candidates, Classes 1-5)

OFA = Offer For Assistance

The ICC CARD INDEX SYSTEM 1887-1996

11279 7/15/36 sec 1 Sec.1.

WESTERN MARYLAND RAILWAY COMPANY

App. of Western Maryland Rail-
 Williamsport, Nettle and Mar-
 way Company, for authori+
 branch line which exte
 of switch at Clarlt
 Maryland to Snyder
 Virginia, a di
 with all side
 aggregating 1.4
 line and sidings
 total 5.014

8562 11/15/30
 WESTERN MARYLAND RY.CO.
 App. for certificate to abandon a part of a
 branch line of railroad extending from
 Gahanhurst, Barbour County, to Weaver,
 Randolph County, West Virginia, a dista
 of 3 miles.

170 ICC 165

FD 28796
 WESTERN MARYLAND RAILROAD COMPANY
 MORE AND OHIO RAILROAD COMPANY
 ation filed for authorit
 es by the constructi
 feet of connecti
 the City of

6/30/78

AB 69 Sub 6F 11/26/80 Sec.1a.

WESTERN MARYLAND RAILWAY COMPANY

APPLICATION FILED FOR ABANDONMENT OF ITS WILLIAMSPORT
 BRANCH FROM VALUATION STATION 4719 & 64.5. MILE POST

ASKING ABANDONMENT INFO FROM THE SURFACE TRANSPORTATION BOARD

AB 69 Sub 5F	10/15/80	Sec.1a	11279	7/15/36	sec 1
WESTERN MARYLAND RAILWAY COMPANY			WESTERN MARYLAND RAILWAY COMPANY		
APPLICATION FILED FOR AUTHORITY TO ABANDON ITS SAND HUN BRANCH, BETWEEN VALUATION STATION MINUS 1 & 11 (MILEPOST 0.00), AT OR NEAR WILLIAMS, AND VALUATION STATION 126&00(MILEPOST 2.41) NEAR PIERCE A DISTANCE OF 2.41 MILES IN TUCKER COUNTY, WEST VIRGINIA			App. of Western Maryland Railway Co. and Williamsport, Nettle and Martinsburg Railway Company, for authority to abandon the branch line which extends from a point of switch at Clarlton, Washington County, Maryland to Snyder, Berkeley County West Virginia, a distance of 5.539 miles, together with all side tracks appurtenant thereto aggregating 1.475 miles, Combines branch line and sidings to be abandoned, therefore total 5.014		
FD 28796	6/30/78	Sec. 1*(18)	221 ICC 445		
WESTERN MARYLAND RAILWAY COMPANY, THE BALTIMORE AND OHIO RAILROAD COMPANY					
Application filed for authority to extend their lines by the construction of approximately 3,050 feet of connecting track at Mount Winans in the City of Baltimore, Md.					

- Please, if at all possible, include the key elements of Railroad, State, County, Milepost, Timetable Stations and approximate date of abandonment.

ICC/ STB ABANDONMENT PROCESS

- FILING OF SDM/ SYSTEM DIAGRAM MAP

NO abandonment application can start until the SDM has been in place (posted) for 30 days and line has not seen any revenue service for 2 years. (49CFR1152(a))

The SDM will show the railroads abandonment plans for at least the next three years, and is color coded:

- *RED, Class 1=To be abandoned within 3 years*
- *GREEN, Class 2= Potentially abandoned lines*
- *YELLOW, Class 3 = Abandonment already pending with STB (on file)*
- *BROWN, Class 4 = Being operated under Directed Service (Continuation)*
- *-BLACK/DARK BLUE, Cls 5 = Carrier Owned, normal operation assumed.-*
- *Class 3 Lines (shortlines) can submit a written description instead of a map*

ICC/STB ABANDONMENT PROCESS (2)

Filing the AB-Docket (FD-Docket prior to 1976)

- ❑ DAY “0” – Abandonment Petition Filed With STB
- ❑ Day 10 = Due date for oral hearing requests
- ❑ DAY 20 = STB Review of Initial Application Due, Federal Record published
- ❑ DAY 45 = Due date for protests & comments, NITU requests
- ❑ DAY 110 = Due date for service of Decision on the merits
- ❑ DAY 120 = Due Date for OFA’s (or 10 days after granting application)

- ❑ STB Then follows evaluations and procedure set out by 49 CFR 1152 and 49USC10502

THE RAILS TO TRAILS NIGHTMARE

Abuse of the National Interim Trail Use (NITU) Process

Know the NITU rules, hold trails people accountable, don't get buffaloed by those who want the benefits, but not the responsibility.

<http://www.stb.dot.gov/stb/docs/Abandonments%20and%20Alternatives1.pdf>

The horribly vague language of the 1976 bill.

Do not get left holding the liability so others can play.

Challenge & Document trail rights at Day 1

Phillips v. US Case (2009)

Reference: National Trails System Act 16 USC 1247(d)

http://www.stb.dot.gov/stb/public/resources_railstrails.html

49 CFR 1152.29

PLEASE – ON YOUR PLATS (In The Notes)

- **IF** IT'S ABANDONED, DOCUMENT HOW IN THE NOTES (ie – Prove it!)
- **IF** it's an operating railroad – DOCUMENT IT (How)
 - Local GIS and Assessors get it wrong all the time, Title Companies frequently avoid working to get the answer.
- **IF** it's now a rail trail – DOCUMENT IT! (NITU/CITU and the Abandonment and Finance Docket Number)
 - Rampant Fraud & False Claims Out There Compounded by administrative blunders by well intentioned local agencies with no clue about the ICC/STB rules.

CITY AND COUNTY SURVEYORS

- DO YOU KNOW WHAT RAILROAD CONTRACTS – LICENSE AGREEMENTS – PERMITS ARE IN EFFECT IN YOUR JURISDICTION.
- GATHER THEM UP AND GET THEM IN ONE PLACE (INFORMATION THAT CAN SAVE \$\$\$)
- APPROACHING THE CLASS 1 SECRETARIES ...
- Why railroads do not want contracts recorded in the clerks office (those dirty easements again)
- STB/ICC ABANDONMENT DOCKETS & FILINGS

SAD NOTE

- Closing of the STB Library in Washington DC
 - See EP-745 “Status of STB Library”



- Office of Public Assistance, Governmental Affairs, and Compliance (OPAGAC) to arrange access between 8:30 a.m. and 5:00 p.m., Monday through Friday. OPAGAC can be reached at (202) 245-0238

SAD NOTE #2

- Intermodal Institute / Denver University College of Law
– STURM LIBRARY SPECIAL COLLECTIONS



8 ½ Semi Trailers Full of Filings and
ICC Decisions 1976 – 1996

Downsizing of ICC Agency



LOST!

SAD NOTE #3

- BLM GIS SYSTEM (Conversion of MTP & HI Sheets)
 - Data integrity issues? (not all states the same now)
- Tract Books to be posted on LR-2000 System by 2025
- Wisconsin MTP's and HI's were created by BLM-Eastern States, but never put into circulation. BLM GIS System is supposed to correct this omission. Patents already posted.. (4th, 5th & 6th PMs)
- <https://glorerecords.blm.gov/default.aspx>

Relevant WISCONSIN & Regional Cases

- **FD-34893** Chicago, Lake Shore & South Bend RR (NS - near Notre Dame University)
- **AB-865 0 X** Honey Creek Railroad vs. Roberts Construction (Henry County, New Castle, IN...What happens when local opinion clashes with federal rule + NITU) **FD-34869?**
- **EP-647 0** Class Exemption for expedited abandonment procedure for Class II and Class III Railroads (Friction between ACSM and AAR)
- **AB-878 0** Adverse Discontinuance - City of Peoria, IL (Peoria Heights Railroad) * **Discussion / Time permitting**
- **FD-34783** Indiana Railroad - Acquisition of CP-Soo Line Latta Subdivision (Milwaukee Road, CTH&SE Evansville Line, Fayette to Bedford + Trackage Rights)
- **FD-** Iowa & Middletown Railroad (November 15, 2018 ... About to take over Iowa Ordinance Depot – Delayed by Govt. Shutdown (STB closed))

Relevant STB / ICC Cases

- **AB-55 579X** CSX Railroad, Abandonment in Parke & Vermilion Counties (OFA), former C&IW line over Wabash River...
- **AB-556 2X** Railroad Ventures Case (Youngstown, OH, Land swindle
- **FD-34527** Maumee & Western RR/RMW Ventures vs. CSX (rail crossing at Defiance, OH)..senior rights case
- **AB-477-3 X** Graysville & Poseyville Railroad (Owensville Terminal RR)...railbanked line comes back to life and out of the weeds (Gibson & Posey counties)
- **FD-34536** RailAmerica (Indiana & Ohio) - Creation of Chicago Ft. Wayne & Eastern RR from CSX, former CR/PC/PRR main line
- **AB-55 631 X** Terminal Warehouse vs/ CSX (Cleveland, OH abandonment determination)

Relevant STB / ICC Cases

- **FD-33388 100** Conrail
Division of Assets to NS
& CSX (Conrail Breakup
& Shared Assets)
- **AB-448 2X** SF&L
Railway/ A&K Materials
(Sale of west end of
TP&W Railway, Scam &
Abuse of STB
Regulations by a salvage
and real estate company
abusing OFA rules)
- **Enter Keokuk Junction**
Ry as new owner (OFA)



Retracement Tips Abandoned R/W

- Scavenging and detective work pays big dividends
- Gather as many R/W maps as possible (bias)
- If you find standard plans: JACKPOT!
- Old photos, sketches, PUC/ RRC files, road viewer reports
- Know your local historians and their resources
- History and evidence have value
- WISCONSIN statutes /Railroad Commission archived files
- **WISCONSIN State Archives**
- **WiDOT Freight RR Section**



If the railroad was there in 1920 or later,
there probably is a map to cover the line.

Retracement Tips Abandoned R/W

- Locate old fixed objects on R/W
- R/W Posts
- Poleline cut-offs
- Bridge Piling Cutoffs (Match To Standard Plans)
- Old culverts and or headwalls
- Locate limits of cuts & fills, especially on long tangents
- Fixed ties with spike holes still present



Retracement Tips Abandoned R/W



- Road crossings with ties, tie plates or rail abandoned in place
- Locate limits of ballast & split
- Signal foundations and or signal appliances
- Terrain analysis basics
- Dig for culverts and boxes with covered ends
- Closeout notes, bridge & building records, contracts

Researchmanship

- MAPPING, RECORDS, STANDARDS AND CONTRACTS.....
- ICC Federal Mandate, Tax Basis
- GLO/BLM Filing Maps
- R/W & Track Maps, Track Charts
- Additional RR Cadastral Mapping
- Land Schedules



Researchmanship

- Track charts (schematics)
- Pipeline/water/wells/fueling facility diagrams and handwritten records
- Lease & Contract/ License Agreements
- Permits/ File Records Folders (UPRR)
- Location Engineer's Profile Maps
- Fence/Crossing/Sidetrack/ Clearance

Researchmanship

- Bridge Records Elkins Act Contracts
- Building Records
- Closeouts (AFE's AFR's)
- Secretary's Office (deed & contract)
- STANDARD PLANS
- Chief Engineer's Standard Instructions
- AREMA MANUAL



Railroad Measurement Science

MODULE 20

- Track geometry cars (49CFR213) (AREMA C-2)



©1998 by Jolly's Utah Depot



Railroad Measurement Science


- Railroad GIS (AREMA C-16)... UP example “Do Maps”
- Track Charts (AREMA C-16)







GIS & The Railroad Industry

RAILROADS: MAPPING TODAY

"The PMV is one of the most powerful, efficient, and cost-effective tools available."



The Precision Measurement Vehicle brings various components together into one system. Together these technologies produce facility information ready for the digital world.

 <p>Extruder Wheels</p>	 <p>Video Camera (left) GPS Receiver (right)</p>
 <p>Laser Rangefinder</p>	 <p>Optical Rangefinder</p>

In the following sections, absolute horizontal and vertical (elevation) accuracy results are presented for both real time acquisition using Nationwide Differential GPS (NDGPS) and post-processed input using Continuous Operating Reference Stations (CORS).

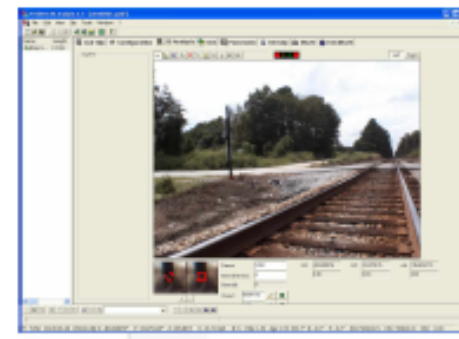


Figure 2: Data Extraction Interface

Horizontal Accuracy from Video Extraction

The statistics presented in the following table by survey day and correction type for all features mapped using the video extraction.

NOTE: A synchronization malfunction occurred for some of the video sequences for the NDGPS data August 30th. This resulted in large errors that skewed the horizontal results of the test. For analysis purposes the information presented for NDGPS00 includes removal of the outliers extracted from the video sequences (reducing the total number of samples from 174 to 95) as well as the actual results (noted in parentheses for NDGPS00).



Contact Sheet(s)...Region-Specific

Railroad Name	FRA CLASS	AAR CLASS	MAPPING CONTACT	ENTRY CONTACT	COMPANY CODE	REMARKS:
<p>CSX Transportation www.CSX.com</p> <p>Business Headquarters Corporate Headquarters 500 Water Street, 15th Floor Jacksonville, FL 32202 904-359-3200</p> <p>CSX Transportation Inc. 500 Water Street Jacksonville, FL 32202 904-359-3100</p> <p>EMERGENCY: 1-800-232-0144</p>	1	1	http://www.csx.com/?fuseaction=general.csxp_maprequest_ext	<p>Access Permit Shortcut:</p> <p>http://www.csx.com/?fuseaction=general.csxp_access</p> <p>Flagging: http://www.csx.com/?fuseaction=general.csxp_flag</p> <p>Property Services - Intercarrier Agreements Attn: Flagging Project CSX Transportation 500 Water Street Jacksonville, FL 32202</p> <p>Phone: 904-633-3404 FAX 904-633-3460</p>	<p>CSX, CSXT CR(NYC) B&O, C&O,MON,L&N, CH&D,C&IW</p>	<p>CSX has an archivist/historian and maps for some of its abandoned R/W for B&O, C&O. Contact: Baltimore & Ohio RR Museum www.borail.org email: info@borail.org 901 W. Pratt Street, Baltimore MD21223 410-752-2490 David Shackelford, Ch Curator x-215 Also see: www.cohs.org (C&O)</p>
<p>Norfolk Southern Corporation (NS) www.NScorp.com</p> <p>Three Commercial Place Norfolk, VA 23510-2191 757-629-2600</p> <p>1200 Peachtree St. NW Atlanta, GA 30309 404-529-1734</p> <p>EMERGENCY: Police Communication Center: 800-453-2530</p>	1	1	<p>Norfolk Southern Corporation Robert F. Davenport Jr. 1200 Peachtree Street NE Building Box 142 Atlanta, GA 30309-35797 Phone: (404) 529-1220 Fax: (404) 529-1367 E-mail: robert.davenport@nscorp.com</p>	<p>http://realestate.nscorp.com/realestate/ShowDoc/english/realestate/pdf/right_of_entry.pdf</p> <p>Norfolk Southern Corporation Real Estate Department Attn: Right of Entry Application 1200 Peachtree Street, NE, 12th Floor Atlanta , GA 30309</p>	<p>NS, N&W,SOU CR(PRR) NKP,WAB,LE&W</p>	<p>http://realestate.nscorp.com/realestate/index.jsp</p> <p>NS has supported a growing Archive at Roanoke, VA http://www.nwhs.org/</p> <p>Absorbed Algiers, Winslow & Western (AWW)...FD-34839</p>

Copy attached to your handout and also in your electronic files....

Contact Sheet for Wisconsin RR's

- List is current as of January 18, 2021 (About to change again!)
- NEW LIST AS OF 1/15/21 (PSR has forced Changes)
- Please plan to contact railroads EARLY and OFTEN (60-90 days)...Latecomers expecting railroads and management companies to jump through hoops because of a lack of planning on the parts of surveyors, engineers and developers are doomed to fail! Tardiness is hardly an excuse. (*Avoid a project killer!*)
- Almost all companies listed are private.
- WSPS WELCOME TO POST ON WEBSITE
- Communication is good business & good policy.
- Beware of the EagleOne vetting issue (especially BNSF & UP)

Reference Material & Where to Find Supporting Documents

- The Railroads (Current Data & CADD updates)
- The Courthouse (Amazing Stories of what is on hand without their knowledge!, *Careless* map storage)
- Wisconsin Office of State Railroad Commissioner
- Wisconsin DOT / Railroad Freight Section Rich Kezior)
 - <https://wisconsindot.gov/Pages/doing-bus/freight/rail.aspx> (State owned lines mostly)
- Wisconsin State Archives - Madison
- NARANational Archives & Records Administration Rockville, MD **RIP-91** Copies to be reprinted 2/22?... (Author David Pfeiffer / NARA Retired)
Also be aware of RIP-114 (GLO/Patents) and RIP-116
(Railroad Cartographic Maps other than Valuation Maps)
- Mid Continent Railway Historical Society - North Freedom, WI
<http://www.midcontinent.org> Don Ginter
- Union Pacific Historical Archives & Museum – at Council Bluffs, IA (Union Pacific Collection here!)
- The Class 1's (BNSF, CP, CN-IC, UP) –Beware the EagleOne Resources issue currently in play. (sadly making life difficult for surveyors gathering evidence)

THE EAGLE ONE RESOURCES SCAM

WHAT BNSF AND UP WILL ASK AS PART OF THE VETTING PROCESS

BECAUSE OF THE INTERFERENCE, MONKEY-WRENCHING, NUISANCE LAWSUITS, ETC.
THE RAILROADS ARE NOW DOUBLE CHECKING ALL OUTSIDE REQUESTS FOR MAPS
AND RELATED DATA, PLUS THE LICENSE/CONTRACT APPROVAL AND PROCESSING
SYSTEM HAS BECOME “BY-THE-BOOK” AND LESS FORGIVING IN SPECIAL CASES.
(THE RAILROAD’S STAFF AND CONTRACTORS HAVE LESS ROOM FOR VARIANCES ,
ESPECIALLY WITH REGARDS TO JUDGEMENT CALLS / PRACTICAL RELIEF)

THE EAGLEONE RESOURCES SCAM

UPRR VETTING PROCESS (BNSF SIMILAR)

1. A description of what you are requesting and what you will be using the mapping for.
2. City, state (not just county name) of the area being requested.
3. At or between any mile posts you may know.
4. The railroad subdivision name if you have it.
5. Street names that encompass the area you're requesting.
6. A Google map (not an aerial or an Assessor's map or abstract or a link of any kind, nor a Tobin map) of the area, which includes street names, which are legible. Google is the only acceptable map.
7. The original railroad company name, before it was sold, abandoned, retired, etc.
8. Township, range, and section(s), if you know it. *****Not applicable for state of Texas. For Texas: please include the survey name and abstract number.
9. *Your company name, address, city, state, zip code, phone number, and your email address.
10. Name of UPRR contact, if working on this particular project with UPRR.
11. Name of Government agency, if working on project with one (not as a subcontractor).

Websites

- www.AREMA.org (American Railway Engineering & Maintenance Association; successor to AREA)
- www.ipogo.net/spiral.html (10-Chord Spiral help, “Spirals for Dummies”)
- www.archives.gov (National Archives, NARA-Rockville, MD)
- www.rrb.gov/cov_index2.html (Index to active railroads, RRB lists)
- www.aar.com/ertc/index.htm (AAR Emergency Response Training Center at Pueblo Test Track...”Rattlesnake Junction Training Facility”)
- www.contractororientation.com 49CFR214 awareness trainer for BNSF, Union Pacific and others, need certification for R/O/E
- www.wyoarchives.state.wy.us (Wyoming State Archives)
- upmuseum@up.com (UPRR Museum/ Durham Collection-Council Bluffs IA...Curator Don SnoddyUncle Pete’s attic!)
- More websites linked to your state contact sheet, railroad & museum specific

Websites To Be Aware Of:

- www.aar.org (Association of American Railroads)
- www.bnsf.com (BNSF Railroad, links to JLL/B&W & Map Requests)
- www.uprr.com/reus/ (Union Pacific Real Estate)
- www.omnitrax.com (Colorado Based shortline rr holding company)
- www.WATCO.com (owner of 48 shortline railroads* and 2 in Australia)
- www.stb.dot.gov (Surface Transportation Board, successor to ICC)
- www.crrm.org (Colorado Railroad Museum - Golden)
- www.caliper.com/maptitude/fra/init.asp (FRA Crossing Locator)
- <http://memory.loc.gov/ammem/gmdhtml/rrhtml/rrhome.html> (Library of Congress, links to old railroad route maps, historical documents)

*Including Wisconsin & Southern



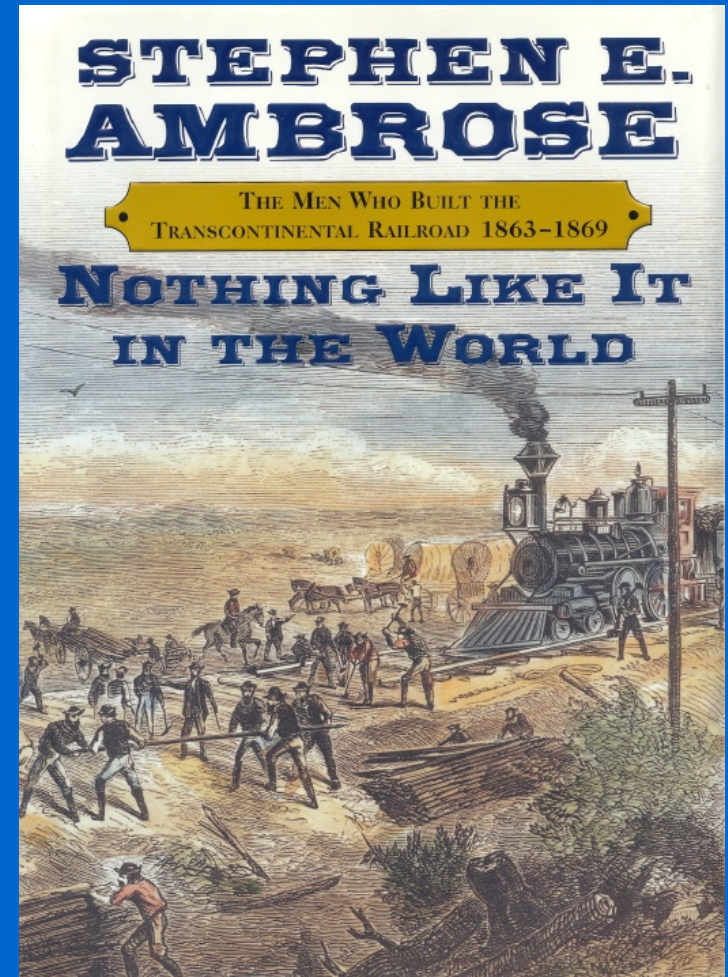
<https://www.watco.com/service/rail/wsor/>

More Websites

- <https://community.oli.org/state/wi#about/> Wisconsin Operation Lifesaver (Gary Koerner – State Coordinator)
- www.AREMA.org American Railway Engineering & Maintenance Association (successor to AREA)
- www.ipogo.net/spiral.html (10-Chord Spiral help, “Spirals for Dummies”) – remember, right-of-way curves are simple/ chord curves
- www.archives.gov (National Archives, NARA-Rockville, MD)
- www.rrb.gov/cov_index2.html (Index to active railroads, RRB lists)
- www.aar.com/ertc/index.htm (AAR Emergency Response Training Center at Pueblo Test Track...”Rattlesnake Junction Training Facility”)
- www.contractororientation.com 49CFR214 awareness trainer for BNSF, Union Pacific and others, need certification for R/O/E
- https://www.mpl.org/archives/milwaukee_road_archives.php
- upmuseum@up.com (UPRR Museum/ Durham Collection-Council Bluffs IA...Curator : Patricia LaBountyUncle Pete’s attic!)
- <https://www.cnwhs.org> CNW Historical Society (IL &IA Archives)

Required Reading

- Steven Ambrose's *“Nothing Like It In The World”* (New York: Simon & Schuster; 2000)
- Edward Gillette's *“Locating the Iron Trail”* (Boston: The Christopher Publishing House; 1925)



OPERATION LIFESAVER

- WWW.OLI.org

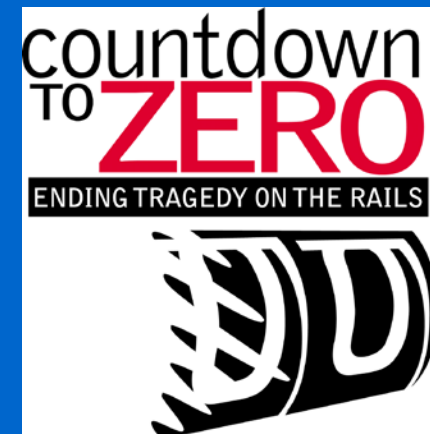
- In Wisconsin:

<https://community.oli.org/state/wi#about>

- GARY KOERNER
WOLI State Coordinator
2154 W Barley Way
- Appleton , WI. 54913

Phone: 920-428-9384 (Mobile) 920-731-6723 (Office)

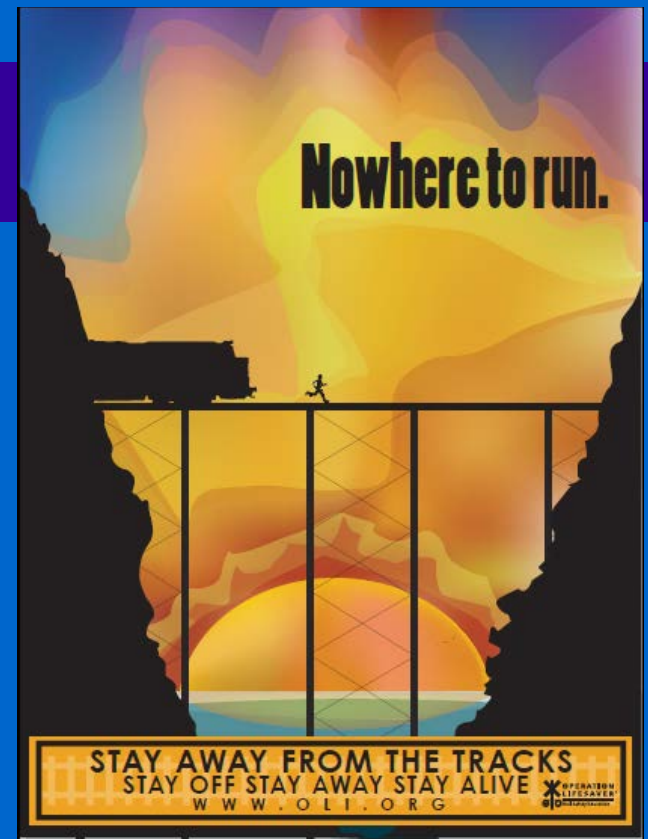
E-Mail: grkconductor@yahoo.com



The OLI Three E's:

- EDUCATION
- ENGINEERING
- ENFORCEMENT

- These folks generate 45 minute to 2 hour safety presentations free to the public. OLI is volunteer driven.



Farnsworth Group Contact Information

- www.f-w.com
- In Colorado:

Charlie Tucker, LSi

8055 E. Tufts Avenue, Ste. 850

Denver, CO 80237

303-692-8483 303-692-0470 (fax)

303-475-7200 (cell)

email: ctucker@f-w.com

Big thanks to Jim Goff (BNSF retired) & Alex Nagel (CP/Soo)

AREMA National Program

- Request for Feedback
- ctucker@f-w.com / rrsurveyor1@comcast.net
- Dknight@AREMA.org (*Attn: Committee 1*)



After 20 years of presenting RRS-101, AREMA Committee 1 (Roadway) is preparing to hand this program off to a new generation of volunteers. We would be interested in hearing what the surveying community thinks is the topic that the profession would like to hear more about. A long planned for RRS-102 (practical application & case studies using the basic ideas presented here) is in the offing, building off of RRS-101 basics.

QUESTIONS?





- T-2 SUNSET AT THE COLORADO- KANSAS BORDER EAST OF HOLLY, COLORADO

Thank you!

•
•
• PLEASE VISIT WWW.AREMA.ORG

FOR:

THE PRACTICAL GUIDE TO RAILWAY
ENGINEERING (PGRE) textbook

PORTIONS (BY CHAPTER) OF THE
AREMA MANUAL FOR RAILWAY
ENGINEERING (MRE)

MORE INFORMATION ON AREMA

• • • • • • • • • •