

Intersectionality of Peer Support in Child Welfare

Presented by

Parents Supporting Parents of WI

Jefferson, Rock, Eau Claire
County

WellPoint, Milwaukee

Where we came from....



- PSP is grounded in research and is an evidence-based program that came from Iowa's parent partner model
 - WI Child and Family Services Review Plan (CRSR) is every 5 years and has 5 goals
 - PSP came from goal 3: Improve the quality and availability of permanency services by engaging children and families in more meaningful ways.
 - Collaborative approach that helps families become engaged in services and support and guide them through the court processes which significantly increases the rate of children being able to remain safely in the home.
-

Who can become a Parent Partner?

Requirements:

- Had a child placed in out-of-home care
- Have no current CPS involvement for safety issues
- Have no substantiated child abuse or neglect reports for 6 months before assuming the role of Parent Partner
- Show commitment in partnering with CPS professionals and community partners

Disqualifications:

- Has had a substantiated sexual abuse allegation
- Is listed on the WI Dept of Corr Sex Offenders Registry
- Was convicted in the death of a child



How is this the same as Peer Support

- Meet the parent where they are at
- Share the lived experience
- Don't disclose personal information
- Setting goals with the parents



How is this different than Peer Support

- Peers are referred to as Parents
- Team Collaboration
- Assigned Tasks by Team
- Discussions with Team Members
- Share our story sooner



Recovery isn't all we do

- Parenting
- Relationships
- Advocacy
- Lifestyle Changes
- Self Care
- Translate CPS terminology
- Share the lived experience point of view
- Create and present at conferences



Large Group Activity

1

Case Scenario

2

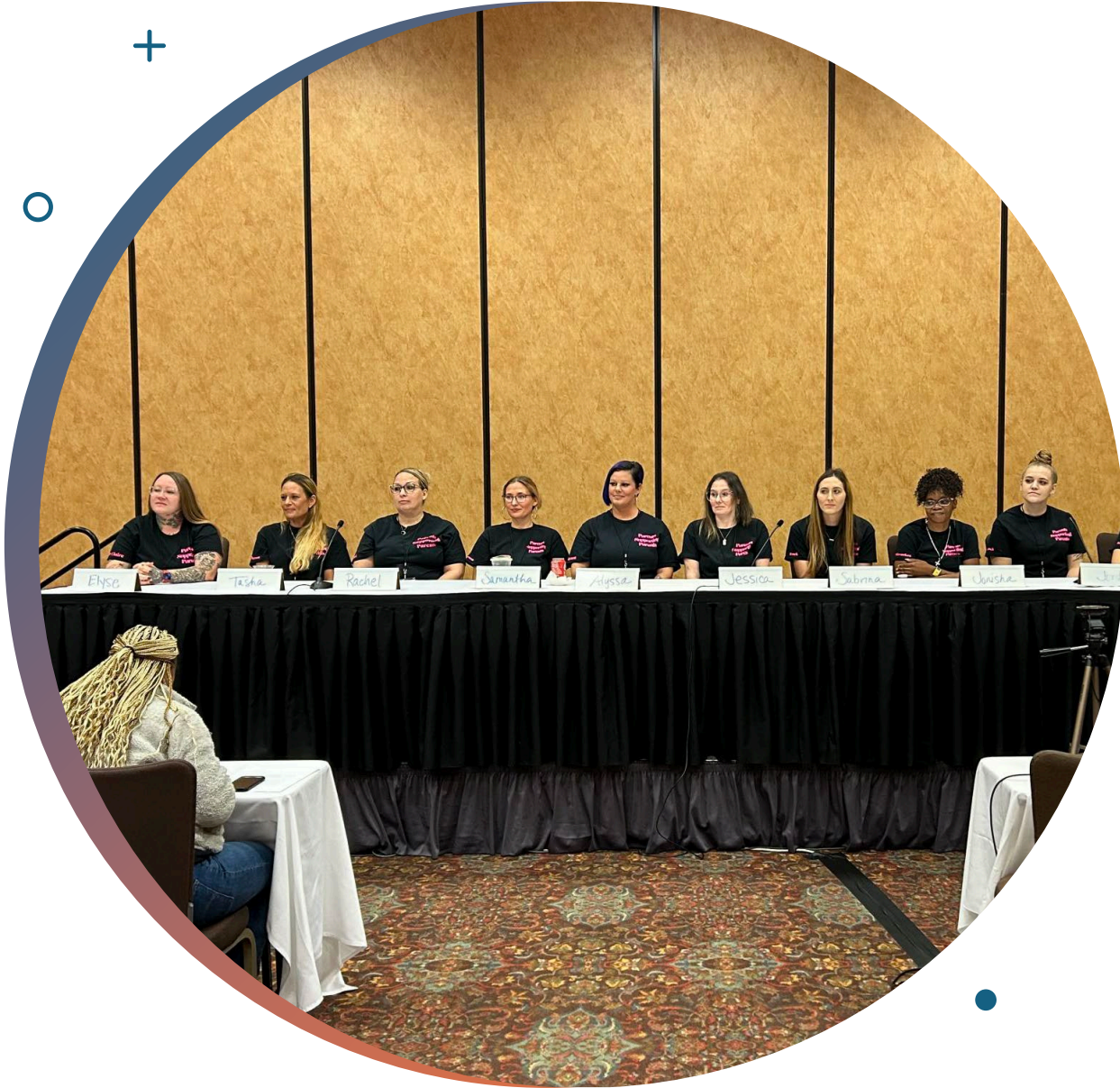
Present return conditions –
Mental Health, AODA,
Parenting

3

Ask participants to say
what county they are from
and a SPECIFIC agency that
a parent can get these
services

4

Handout will have a writing
section where participants
can write down places they
hear of while doing the
activity and they can take
with them



Parent Partner Input

- Rock County
- Jefferson County
- Eau Claire County
- WellPoint
(Milwaukee County)



Rock County Resources

Jefferson County Resources

Watertown Family Connections:

-920.261.2450
-100 S. Water Street
Watertown, WI 53094



Mary's Room: Saint Paul's Episcopal Church:

- 413 S 2nd St Watertown WI 53094
- 920-261-1150
- saint413paul@gmail.com
- Emergency Contact - Ellen at 920-248-1930

Safe Communities:

-608-228-1278
-www.safercommunity.net



Certainly! **Helping Hands for Our Children in the Chippewa Valley** is a non-profit program that works diligently to meet the needs of our community's children. Here are some details about this organization:

1. **Location:** You can find Helping Hands for Our Children at 930 Galloway #25 Banbury Building 13, Eau Claire, WI . They are open on **Monday, Wednesday, and Friday from 10 am to 1 pm**. Walk-ins are welcome.
2. **Services Provided:** They offer assistance with various essentials for children, including:
 - **Clothing**
 - **Bedding**
 - **Formula**
 - **Diapers**
 - **Shoes**
 - **Toys**
 - **Books**
 - **Puzzles**
 - **Games**
 - **Baby equipment**

Apple Pregnancy Care Center

applepcc.org

2600 Stein Blvd, Eau Claire, WI 54701 · ~2.6 mi

(715) 834-7734



Apple Pregnancy
Care Center

Eau Claire County Resources

Resource for Fathers
Milwaukee Fatherhood Initiative

4828 w Fond du lac Ave,
Milwaukee, WI 53216

MISSION:

The Milwaukee Fatherhood Coalition is a collaborative partnership dedicated to promoting the positive involvement of both parents in the lives of their children.



Mental health



AODA resource
Meta House

2625 N Weil St,
Milwaukee, WI
53212

414-9621200

OUR MISSION

**Meta House ends
the generational
cycle of addiction by
healing women and
strengthening
families.**



WellPoint (Milwaukee County) Resources

Questions for Parent Partners



Topics of Training

- Strong Teams
- Health and Wellness
- Communication
- Your Journey
- Supporting Others
- Court Process
- Parent Partner Role
- System Change

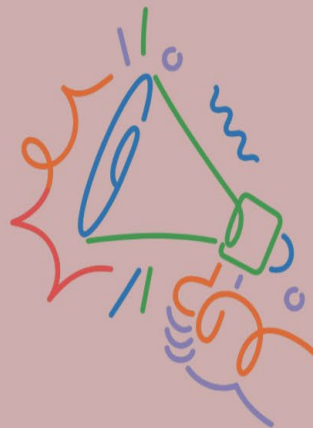


Parents Supporting Parents

B.A.B.F.

Building A Better Future
Peer Support Training

Now open to County
Employed Peer Support Staff
who support Peers that have
involvement in the Child
Welfare System!



**Next
BABF
OCT
2024**

Mission

Learn how to best support peer success and implement system change through effective advocacy from Parent Partners who have extensive lived experience, both personally and in supporting those impacted by the Child Welfare system.

Parent Partner Information

Jefferson County

Alyssa Hake

ahake@jeffersoncountywi.gov

Jessica Manogue

jmangue@jeffersoncountywi.gov

Samantha Copus

Scopus@jeffersoncountywi.gov

Rock County

DeAnna Cobun

dcobun@psgcip.com

Rachel Belanger

rbelanger@psgcip.com

Jordyn Otto

jotto@psgcip.com

Amber Czech

aczech@psgcip.com

Eau Claire County

Elyse Harvey

Elyse.Harvey@eauclairecounty.gov

WellPoint - Milwaukee

Jonisha Neita

jneita@wellpointcare.org